

ADDENDUM NO. 1

August 3, 2022

Additions and Renovations Hawthorne Elementary School
8301 E. Rawles Avenue
Indianapolis, IN 46219

TO: ALL BIDDERS OF RECORD

This Addendum forms a part of and modifies the Bidding Requirements, Contract Forms, Contract Conditions, the Specifications and the Drawings dated July 1, 2022, by CSO Architects. Acknowledge receipt of the Addendum in the space provided on the Bid Form. Failure to do so may subject the Bidder to disqualification.

This Addendum consists of Pages ADD 1-1 and Addendum No. 1 from CSO Architects dated August 3, 2022, consisting of three (3) pages, Specification Section 02 41 00 – Site Demolition, and Addendum Drawing Sheets: C401A, C401B, C701, and C702.

A. SPECIFICATION SECTION 00 00 20 TABLE OF CONTENTS

1. Add The following Specification Section to this Section:

01 23 00 – Alternates

ADDENDUM

ADDENDUM NO: 1

BID PACKAGE NO:

PROJECT: ADDITIONS AND RENOVATIONS TO HAWTHORNE ELEMENTARY SCHOOL

PROJECT NO: 2021054

DATE: August 3, 2022

BY: Lisa Roberson

This Addendum is issued in accordance with the provisions of "The General Conditions of the Contract for Construction," Article 1, "Contract Documents" and becomes a part of the Contract Documents as provided therein. This Addendum includes:

Addendum Pages: ADD 1 of 3 Through ADD 3 of 3

Attached Documents: Specification SECTION 02 41 00 – SITE DEMOLITION
SHEET C401A – STORMWATER POLLUTION PREVENTION PLAN
SHEET C401B – STORMWATER POLLUTION PREVENTION PLAN POST CONSTRUCTION
SHEET C701 – STORM PLAN AND PROFILES
SHEET C702 – STORM PLAN AND PROFILES

PART 0 - GENERAL INFORMATION

0.1 If you have trouble viewing downloaded PDFs, please contact

Greg.Holman@easternengineering.com

0.2 A list of planholders can be found on the Eastern Engineering website:

https://www.csoplanroom.com/View/ViewJob.aspx?job_id=9598&view=ph

PART 1 - BIDDING REQUIREMENTS

1.1 NOT USED

PART 2 - SPECIFICATIONS

2.1 REVISE Project Manual Construction Specifications - Volumes No. 1, 2 and 3 COVERS to read "July 25, 2022" in lieu of "July 1, 2022". (At lower right hand of covers)

2.2 REVISE Project Manual Construction Specifications - Volume No. 2 COVER to read "VOLUME No. 2 – DIVISIONS 2-14" in lieu of "VOLUME No. 2 – DIVISIONS 2-12". (At lower right hand of cover)

2.3 SECTION 00 00 20 - TABLE OF CONTENTS

A. ADD SECTION 01 23 00 - ALTERNATES to Table of Contents. (All 3 Project Manual Volumes).

- B. ADD SECTION 09 05 61 – MOISTURE VAPOR EMISSION CONTROL to Table of Contents (All 3 Project Manual Volumes).
- C. REPLACE SECTION 11 66 23 – SECLUSION ROOM PADDING with 11 66 26 – SECLUSION ROOM PADDING in Table of Contents (All 3 Project Manual Volumes).

2.4 SECTION 02 41 00 – SITE DEMOLITION

- A. ADD Specification SECTION 02 41 00 – SITE DEMOLITION, attached to this Addendum

2.5 SECTION 04 20 00 – UNIT MASONRY

- A. REVISE Paragraph 2.04.B.1.b. to read "Type B2 Accent Brick: Endicott Sienna Ironspot Velour".
- B. REVISE 2.04.B.1.b.2) to read "Color: Sienna Ironspot to match existing".

2.6 SECTION 12 32 16 – MANUFACTURED PLASTIC-LAMINATE-FACED CASEWORK

- A. ADD the following to Paragraph 2.01.A:
"5. Midwest Cabinet Solutions"

PART 3 - DRAWINGS

CIVIL

3.1 COVER SHEET – SHEET INDEX

- A. At Sheet Index, DELETE the following sheet:
C401 – STORMWATER POLLUTION PREVENTION PLAN
- B. At Sheet Index, ADD the following sheet:
C401A – STORMWATER POLLUTION PREVENTION PLAN

3.2 DELETE THE FOLLOWING SHEETS IN THEIR ENTIRETY:

- A. SHEET C401 B – STORMWATER POLLUTION PREVENTION PLAN
- B. SHEET C401 B – STORMWATER POLLUTION PREVENTION PLAN POST CONSTRUCTION
- C. SHEET C702 – STORM PLAN AND PROFILES
- D. SHEET C702 – STORM PLAN AND PROFILES

3.3 ADD THE FOLLOWING SHEETS, ATTACHED TO THIS ADDENDUM

- A. SHEET C401A – STORMWATER POLLUTION PREVENTION PLAN
- B. SHEET C401B – STORMWATER POLLUTION PREVENTION PLAN POST CONSTRUCTION
- C. SHEET C701 – STORM PLAN AND PROFILES
- D. SHEET C702 – STORM PLAN AND PROFILES

END ADDENDUM

SECTION 02 41 00 - SITE DEMOLITION

PART 1 GENERAL

1.01 RELATED DOCUMENTS

- A. Drawings and general provisions of the Contract, including General and Supplementary Conditions and Division 1 Specification Section, apply to this Section.

1.02 SUMMARY

- A. Building demolition excluding removal of hazardous materials and toxic substances.
- B. Selective demolition of built site elements.
- C. Selective demolition of building elements for alteration purposes.
- D. Abandonment and removal of existing utilities and utility structures.

1.03 RELATED SECTIONS

- A. Section 31 10 00 - Site Clearing
- B. Section 31 22 00 - Grading
- C. Section 31 23 23 - Fill
- D. Section 31 24 00 - Temporary Erosion and Sedimentation Control

1.04 REFERENCE STANDARDS

- A. 29 CFR 1926 - U.S. Occupational Safety and Health Standards; current edition.
- B. NFPA 241 - Standard for Safeguarding Construction, Alteration, and Demolition Operations; 2013.

1.05 SUBMITTALS

- A. Site Plan: Showing:
 - 1. Vegetation to be protected.
 - 2. Areas for temporary construction and field offices.
 - 3. Areas for temporary and permanent placement of removed materials.
- B. Demolition Plan: Submit demolition plan as specified by OSHA and local authorities.
 - 1. Indicate extent of demolition, removal sequence, bracing and shoring as needed, and location and construction of barricades and fences.
 - 2. Identify demolition firm and submit qualifications.
 - 3. Include a summary of safety procedures.
- C. Construction Waste Management Plan: Submit a preconstruction waste management plan to the owner prior to issuance of a demolition permit
 - 1. Identify the construction and demolition waste materials expected to be diverted
 - 2. Determine whether construction and demolition waste material are to be source-separated or commingled.
 - 3. Identify service providers and designate designation facilities for construction and demolition waste materials generated on the job site
 - 4. Identify the average diversion rate for facilities that accept or process commingled construction materials. Separate average percentages shall be included for those materials collected by construction and demolition materials processing materials processing facilities that end up as alternative daily cover and incineration. Alternative daily cover is cover material other than earthen material, placed on the surface of the active face of a municipal solid-waste landfill at the end of each operating day to control vectors, fires, odors, blowing litter, and scavenging.
- D. Project Record Documents: Contactor shall accurately record actual locations of capped and active utilities and subsurface construction and provide a copy of site utility record.
 - 1. Documents shall be provided to Engineer upon substantial completion.

1.06 QUALITY ASSURANCE

- A. Demolition Firm Qualifications: Company specializing in the type of work required.
- B. Contractor must conform to all guidelines and regulations set forth in the Indiana Department of Environmental Management, Office of Water Quality, and Rule 5 permit.

PART 2 PRODUCTS

2.01 MATERIALS

- A. Fill Material: As specified in Section 31 23 23 - Fill.

PART 3 EXECUTION

3.01 SCOPE

- A. Remove paving and curbs as required to accomplish new work.
- B. Remove all other paving and curbs within site boundaries.
- C. Within area of new construction, remove foundation walls and footings to a minimum of 2 feet below finished grade.
- D. Remove concrete slabs on grade as indicated on drawings.
- E. Remove manholes and manhole covers, curb inlets and catch basins.
- F. Remove fences and gates.
- G. Remove all miscellaneous and utility items indicated, for salvage, relocation, recycling, and removal. All demolished material shall become the property of the contractor unless otherwise noted and shall be legally disposed of off-site.
- H. Fill excavations, open pits, and holes in ground areas generated as result of removals, using specified fill; compact fill as specified in Section 31 23 23.

3.02 GENERAL PROCEDURES AND PROJECT CONDITIONS

- A. Comply with applicable codes and regulations for demolition operations and safety of adjacent structures and the public.
 - 1. Obtain required permits.
 - 2. Use of explosives is not permitted.
 - 3. Take precautions to prevent catastrophic or uncontrolled collapse of structures to be removed; do not allow worker or public access within range of potential collapse of unstable structures.
 - 4. Provide, erect, and maintain temporary barriers and security devices.
 - 5. Staging areas and the construction site itself shall be confined and secured every evening and over weekends. An 8' high minimum fence with dust screening shall be constructed to keep pedestrians out of these areas as well as the construction site. Contractor shall install signs in prominent locations on fence stating restricted access.
 - 6. Use physical barriers to prevent access to areas that could be hazardous to workers or the public.
 - 7. Conduct operations to minimize effects on and interference with adjacent structures and occupants.
 - 8. Do not close or obstruct roadways or sidewalks without permit and/or coordination with the City of Indianapolis and the Owner.
 - 9. Conduct operations to minimize obstruction of public and private entrances and exits; do not obstruct required exits at any time; protect persons using entrances and exits from removal operations.
 - a. Contractor shall coordinate with Owner to develop a parking plan taking into account school policies and procedures.
 - 10. Obtain written permission from owners of adjacent properties when demolition equipment will traverse, infringe upon or limit access to their property.

- B. Do not begin removal until receipt of notification to proceed from Owner.
- C. Do not begin removal until built elements to be salvaged or relocated have been removed.
- D. Do not begin removal until vegetation to be relocated has been removed and specified measures have been taken to protect vegetation to remain.
- E. Protect existing structures and other elements that are not to be removed.
 - 1. Provide bracing and shoring.
 - 2. Prevent movement or settlement of adjacent structures.
 - 3. Stop work immediately if adjacent structures appear to be in danger.
- F. Minimize production of dust due to demolition operations; do not use water if that will result in ice, flooding, sedimentation of public waterways or storm sewers, or other pollution.
- G. If hazardous materials are discovered during removal operations, stop work and notify Engineer and Owner; hazardous materials include regulated asbestos containing materials, lead, PCB's, and mercury.
- H. Perform demolition in a manner that maximizes salvage and recycling of materials.
 - 1. Dismantle existing construction and separate materials.
 - 2. Set aside reusable, recyclable, and salvageable materials; store and deliver to collection point or point of reuse.
- I. Partial Removal of Paving and Curbs: Neatly saw cut at right angle to surface.

3.03 EXISTING UTILITIES

- A. Coordinate work with utility companies; notify before starting work and comply with their requirements; obtain required permits.
- B. Protect existing utilities to remain from damage.
- C. Do not disrupt public utilities without permit from authority having jurisdiction.
- D. Do not close, shut off, or disrupt existing life safety systems that are in use without at least 7 days prior written notification to Owner.
- E. Do not close, shut off, or disrupt existing utility branches or take-offs that are in use without at least 3 days prior written notification to Owner.
- F. Locate and mark utilities to remain; mark using highly visible tags or flags, with identification of utility type; protect from damage due to subsequent construction, using substantial barricades if necessary.
- G. Remove exposed piping, valves, meters, equipment, supports, and foundations of disconnected and abandoned utilities.
- H. Prepare building demolition areas by disconnecting and capping utilities outside the demolition zone; identify and mark utilities to be subsequently reconnected, in same manner as other utilities to remain.

3.04 SELECTIVE DEMOLITION FOR ALTERATIONS

- A. Drawings showing existing construction and utilities are based on casual field observation and existing record documents only.
 - 1. Verify that construction and utility arrangements are as indicated.
 - 2. Report discrepancies to Engineer before disturbing existing installation.
 - 3. Beginning of demolition work constitutes acceptance of existing conditions that would be apparent upon examination prior to starting demolition.

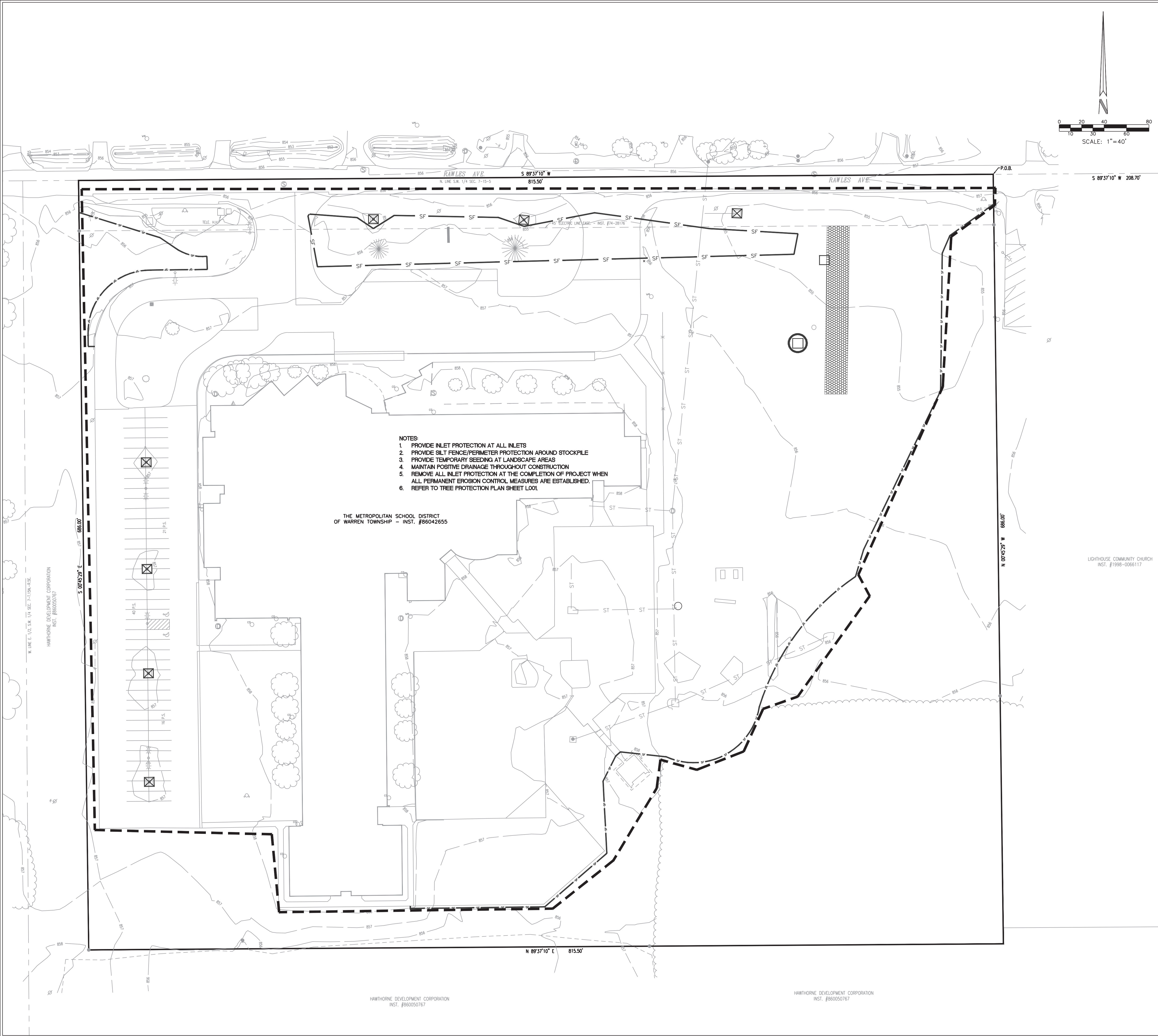
3.05 DEBRIS AND WASTE REMOVAL

- A. Remove debris, junk, and trash from site.
- B. Remove from site all materials not to be reused on site.
- C. Leave site in clean condition, ready for subsequent work.

2021054
Addition and Renovation
Hawthorne Elementary School
MSD of Warren Township

02 41 00 - 4
SITE DEMOLITION

D. Clean up spillage and wind-blown debris from public and private lands.
END OF SECTION



- NOTES:
1. PROVIDE INLET PROTECTION AT ALL INLETS
 2. PROVIDE SILT FENCE/PERIMETER PROTECTION AROUND STOCKPILE
 3. PROVIDE TEMPORARY SEEDING AT LANDSCAPE AREAS
 4. MAINTAIN POSITIVE DRAINAGE THROUGHOUT CONSTRUCTION
 5. REMOVE ALL INLET PROTECTION AT THE COMPLETION OF PROJECT WHEN ALL PERMANENT EROSION CONTROL MEASURES ARE ESTABLISHED.
 6. REFER TO TREE PROTECTION PLAN SHEET L001

THE METROPOLITAN SCHOOL DISTRICT
OF WARREN TOWNSHIP - INST. #86042655

HAWTHORNE DEVELOPMENT CORPORATION
INST. #86050767

HAWTHORNE DEVELOPMENT CORPORATION
INST. #86050767

STORMWATER POLLUTION PREVENTION PLAN LEGEND

- TP TREE PRESERVATION FENCING (REFER TO TREE PROTECTION PLAN.)
- SF SILT FENCE BARRIER INSTALLATION/CONSTRUCTION LIMITS
- CONSTRUCTION LIMITS
- PERMANENT SEEDING WITH EROSION CONTROL BLANKET (NAG SC150 OR EQUAL)
- TEMPORARY CONSTRUCTION INGRESS/EGRESS DRIVE. ONCE CONSTRUCTION IS COMPLETE, CONTRACTOR SHALL REMOVE STONE, GEOTEXTILE, RESPREAD TOPSOIL, AND PERMANENT SEED ENTIRE AREA.
- PERMANENT SEEDING
- CONTRACTOR STAGING AREA SHALL UTILIZE THE EXISTING ASPHALT AREA. CONTRACTOR SHALL REPAIR ALL DAMAGED ASPHALT WITHIN THE AREA UPON COMPLETION OF THE PROJECT AND SHALL MEET THE STANDARDS AS DICTATED ON DETAILS.
- GEOTEXTILE FABRIC YARD DROP INLET PROTECTION
- INSERT (BAG) INLET PROTECTION
- INSERT (BAG) CURB INLET PROTECTION WITH CURB FILTER
- CONCRETE END SECTION RIPRAP (UPPER AND LOWER INV)
- CONCRETE WASHOUT
- GRAVEL DONUT INLET PROTECTION

STORMWATER POLLUTION PREVENTION PLAN NOTES

1. REFER TO SHEET C403 FOR SOILS MAP AND SOIL CHARACTERISTICS.
2. REFER TO SHEET C402 FOR STORMWATER POLLUTION PREVENTION PLAN DETAILS.
3. REFER TO LANDSCAPE PLANS FOR PLANTING DETAILS. ANY MOUNDING NOTED ON LANDSCAPE PLANS SHALL NOT CHANGE THE DRAINAGE PATTERN NOTED IN THE GRADING PLAN SERIES 300'S.
4. SILT FENCE BARRIER TO BE INSTALLED PRIOR TO CONSTRUCTION.
5. EROSION CONTROL MEASURES TO BE MAINTAINED THROUGHOUT THE ENTIRE CONSTRUCTION PROCESS.
6. REFER TO THE STORMWATER POLLUTION PREVENTIONS NOTES SHEET C403 FOR ALL EROSION CONTROL MEASURES, SCHEDULES, AND SEQUENCES.
7. CONTRACTOR TO PROVIDE A STABLE TEMPORARY GRAVEL CONSTRUCTION INGRESS/EGRESS CONDITION FROM THE CONSTRUCTION SITE TO KEEP MUD AND SEDIMENT OFF PUBLIC ROADS.
8. EROSION CONTROL MAINTENANCE - SITE TO BE INSPECTED AT LEAST ONCE A WEEK AND MAKE REPAIRS IMMEDIATELY AFTER PERIODS OF 1/2" RAINFALL OR GREATER.
9. STORMWATER DISCHARGE WILL NOT ENTER THE GROUNDWATER FOR THIS PROJECT.
10. THE 100 YEAR FLOODPLAIN FLOODWAYS ARE NOT PRESENT ON THIS SITE.
11. CONTRACTOR SHALL PROVIDE THE DEPARTMENT OF BUSINESS & NEIGHBORHOOD SERVICES OF THE CITY OF INDIANAPOLIS WITH A NARRATIVE DESCRIBING THE CONSTRUCTION SEQUENCE, INCLUDING START DATES FOR EACH LAND DISTURBING ACTIVITY.
12. THE ACTUAL PERSON RESPONSIBLE FOR THE INSTALLATION AND MAINTENANCE OF THE EROSION CONTROL SHALL BE DETERMINED DURING THE BIDDING PROCESS. THE AWARD WINNING CONTRACTOR SHALL BE RESPONSIBLE FOR THE PROPER INSTALLATION AND MAINTENANCE OF ALL EROSION CONTROL MEASURES. ONCE DETERMINED, CONTRACTOR SHALL COORDINATE WITH THE CITY.
13. ANY DISCREPANCIES OR CONFLICTS WHICH BECOME APPARENT BEFORE OR DURING CONSTRUCTION SHALL BE BROUGHT TO THE ATTENTION OF THE ENGINEER OF RECORD IMMEDIATELY SO THAT CLARIFICATION OR REDESIGN MAY OCCUR.
14. ALL PROPOSED EROSION AND SEDIMENT CONTROL SHALL BE IN CONFORMANCE WITH CHAPTER 600 OF THE CITY OF INDIANAPOLIS STORMWATER SPECIFICATIONS MANUAL, LATEST EDITION. DISCREPANCIES BETWEEN THE PLANS AND THE MANUAL SHALL NOT ALLEVATE THE CONTRACTOR FROM ADHERING TO THE REQUIREMENTS AS SET FORTH IN THE MANUAL.
15. ADDITIONAL EROSION AND SEDIMENT CONTROL MEASURES MAY BE REQUIRED BY THE INSPECTOR.

STORMWATER POLLUTION PREVENTION PLAN SEQUENCE AND IMPLEMENTATION

1. INSTALL CONSTRUCTION FENCING AND GATES IF REQUIRED.
2. INSTALL SILT FENCING. DUST SHALL BE KEPT TO A MINIMUM BY UTILIZING SPRINKLING WATER OR OTHER APPROVED METHODS.
3. IDENTIFY CONSTRUCTION STAGING AREA, CONCRETE WASHOUT AREAS, MATERIAL STORAGE AND TOPSOIL STOCKPILE AREAS. EACH AREA SHALL BE PROPERLY PROTECTED AND DELINEATED PRIOR TO CONSTRUCTION.
4. THE IDEM NOI, IF REQUIRED, AND CONTACT INFORMATION FOR THE PERSON WITH ONSITE RESPONSIBILITIES MUST BE POSTED ONSITE.
5. IDEM AND THE LOCAL CITY AGENCY MUST BE NOTIFIED WITHIN 48 HOURS OF COMMENCING CONSTRUCTION.
6. CONTACT INDIANA UNDERGROUND PLANNED PROTECTION SYSTEMS, INC. ("INDIANA 811") FOR UNDERGROUND UTILITY LOCATIONS. (1-800-362-5544).
7. BEFORE OPENING UP THE SITE, FIRST EVALUATE, MARK AND PROTECT IMPORTANT TREES AND ASSOCIATED ROOT ZONES, UNIQUE AREAS TO BE PRESERVED (I.E. WETLANDS), STREAMS, LAKES OR EXISTING VEGETATION SUITABLE FOR USE AS FILTER STRIPS (ESPECIALLY IN PERIMETER AREAS).
8. FIRST, STRIP AND STOCKPILE TOPSOIL ON-SITE.
9. BEGIN MASS EARTHWORK FOR PROPOSED IMPROVEMENTS.
10. REPAIR ANY SILT FENCING IF DAMAGED. IF SILT IS 1/3 HEIGHT OF FABRIC, REMOVE SILT AND REPLACE TO ORIGINAL CONDITION.
11. IMMEDIATELY AFTER GRADING, APPLY SURFACE STABILIZATION PRACTICES ON ALL GRADED AREAS, USING PERMANENT MEASURES IN ACCORDANCE WITH THE EROSION CONTROL PLAN. HOWEVER, IF WEATHER DELAYS PERMANENT STABILIZATION, TEMPORARY SEEDING AND/OR MULCHING MAY BE NECESSARY AS A PROVISIONAL MEASURE. ALSO STABILIZE (USING TEMPORARY SEEDING/MULCHING OR OTHER SUITABLE MEANS) ANY DISTURBED AREA WHERE ACTIVE CONSTRUCTION WILL NOT TAKE PLACE FOR 15 WORKING DAYS.
12. AFTER CONSTRUCTION AND FINAL GRADING, PERMANENTLY STABILIZE ALL DISTURBED AREAS. ALSO REMOVE TEMPORARY RUNOFF CONTROL STRUCTURES, ANY UNSTABLE SEDIMENT AROUND THEM, AND STABILIZE THOSE AREAS WITH PERMANENT SEEDING AND EROSION CONTROL BLANKET IF NECESSARY.
13. MAINTAIN ALL EROSION AND SEDIMENT CONTROL PRACTICES UNTIL ALL DISTURBED AREAS ARE PERMANENTLY STABILIZED.

Person Responsible for Installation and Maintenance of Erosion and Sediment Control Practices:

Name: TBD
Business Address: TBD
Phone: TBD

SCSO

8831 Keystone Crossing, Indianapolis, IN 46240
317.848.7800 | c@csocnet

Cripe

Solutions by Design Since 1937

PROJECT:
MSD OF WARREN TOWNSHIP
HAWTHORNE
ELEMENTARY SCHOOL

8301 RAWLES AVE,
INDIANAPOLIS, IN 46219

Scope Drawings:

These drawings indicate the general scope of the project in terms of total design concept, the dimensions of the site and the major site elements.
The drawings do not necessarily indicate or describe all work required for full performance and completion of the requirements of the Contract.
On the basis of the general scope indicated or described, the trade contractors shall furnish all items required for the proper execution and completion of the work.

Revisions:

REV 01 ADDENDUM #01 08/03/22

Issue Date Drawn By Checked By
2022-07-25 D. KUEHNEN S. PIERRE

Drawing Title:

STORMWATER
POLLUTION
PREVENTION
PLAN

Certified By:

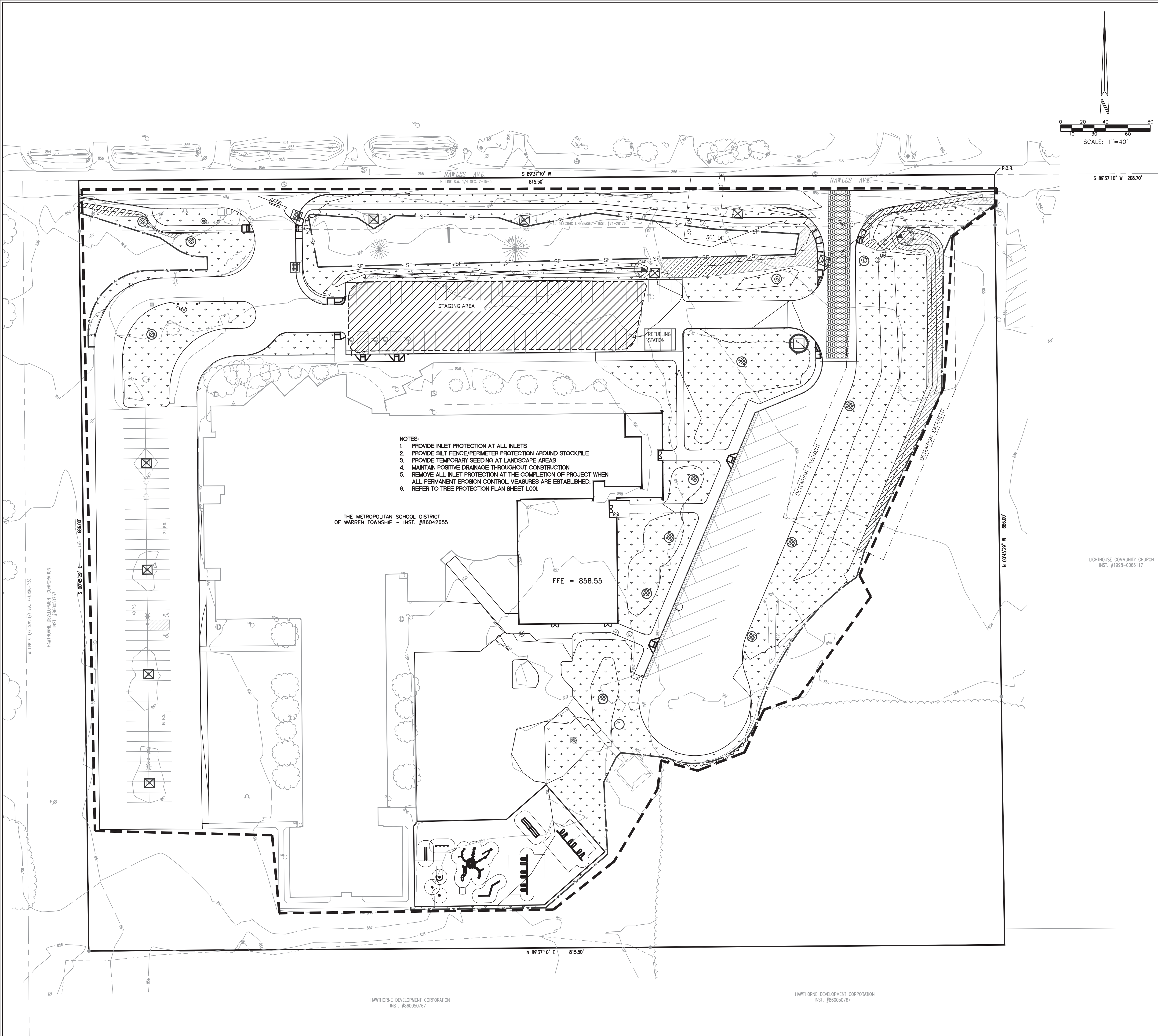


Drawing Number:

C401 A

Project Number:

CRPE No. 200085-20000



Name: TBD
Business Address: TBD
Phone: TBD

OSU

88831 Keystone Crossing, Indianapolis, IN 46240
317.848.7800 | csoinc.net



Solutions by Design Since 1937

PROJECT:
MSD OF WARREN TOWNSHIP
HAWTHORNE
ELEMENTARY SCHOOL

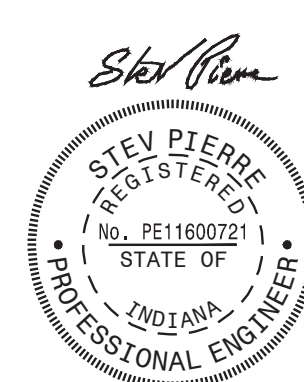
**8301 RAWLES AVE,
INDIANAPOLIS IN 46210**

On the basis of the general scope indicated or described the trade contractors shall furnish all items required for the proper execution and completion of the work.

REV 01 ADDENDUM #01 08/03/22

Issue Date	Drawn By	Checked By
2022-07-25	D. KUEHNEN	S. PIERRE

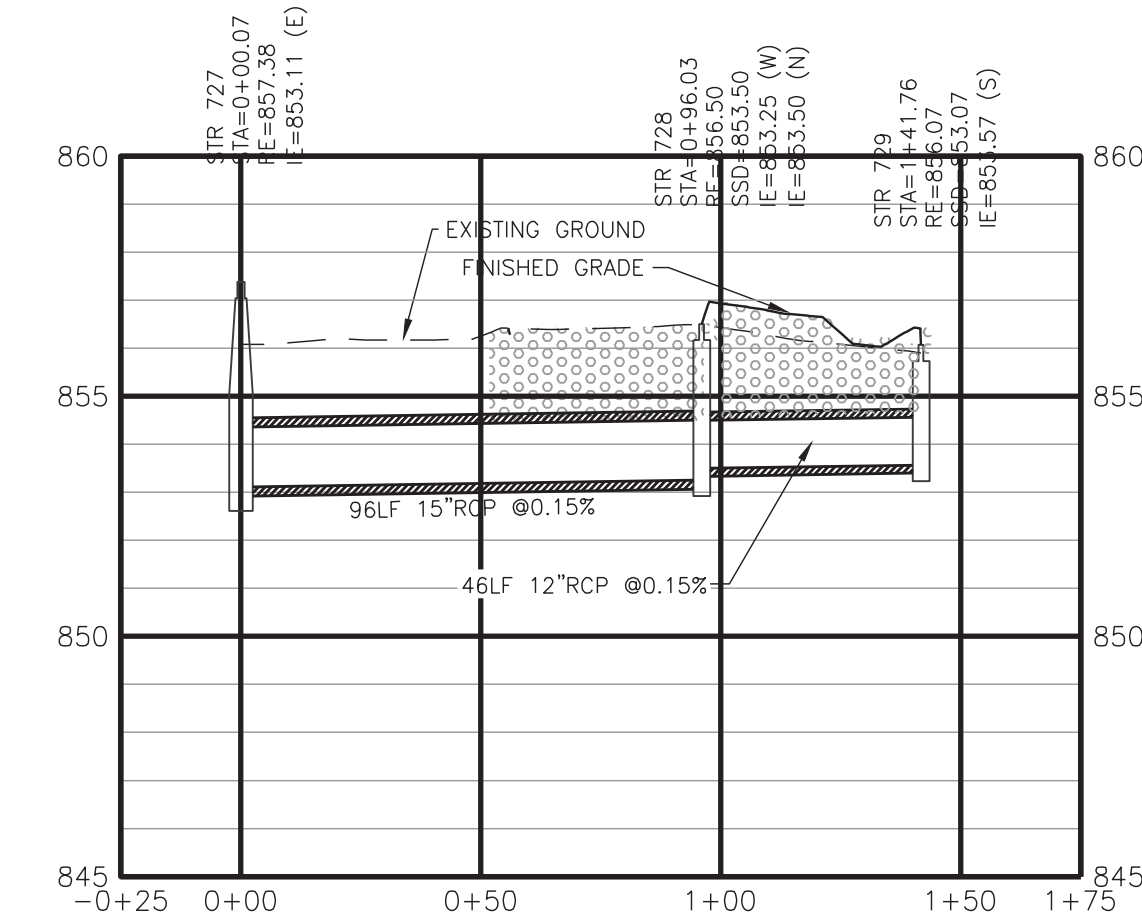
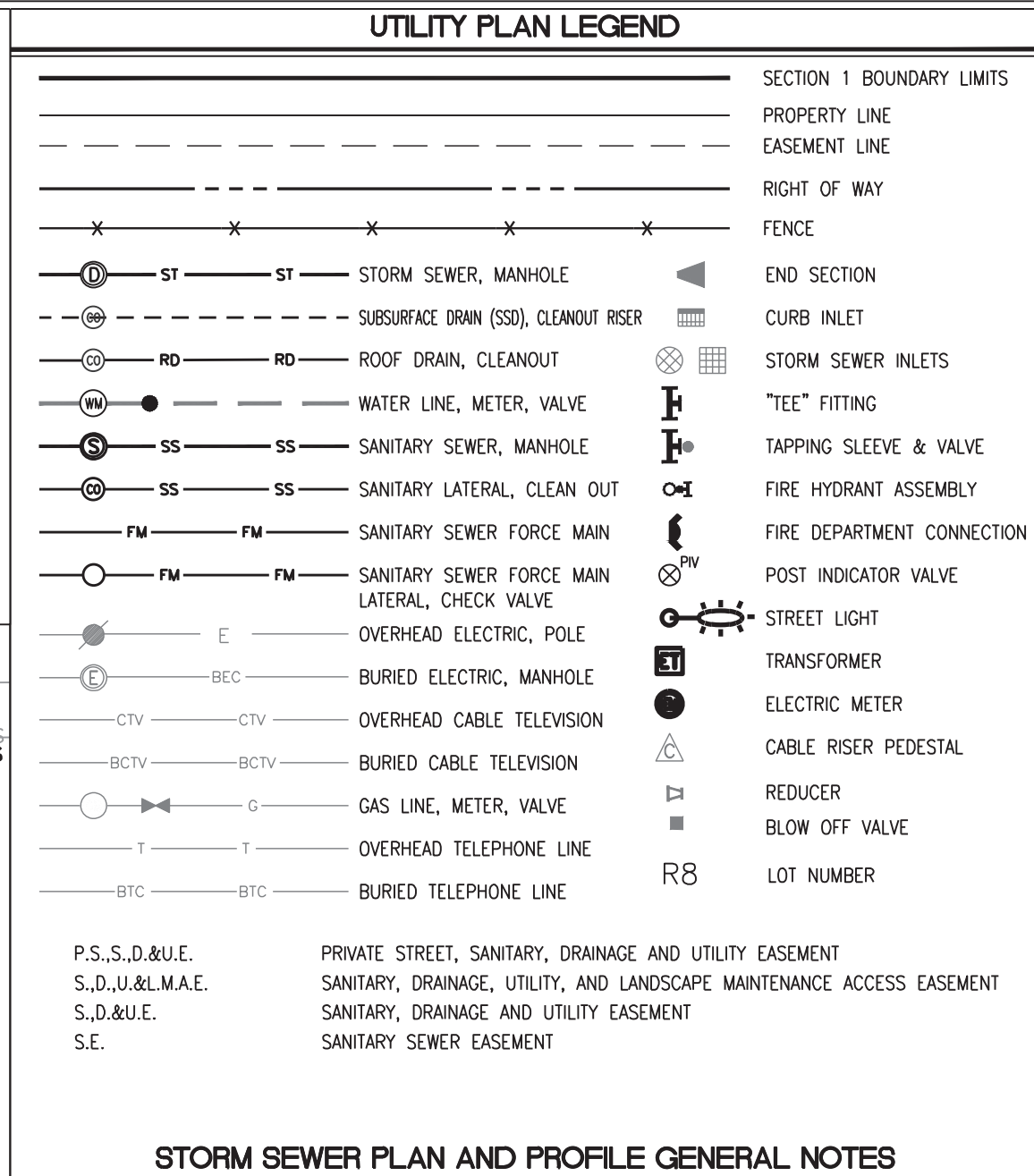
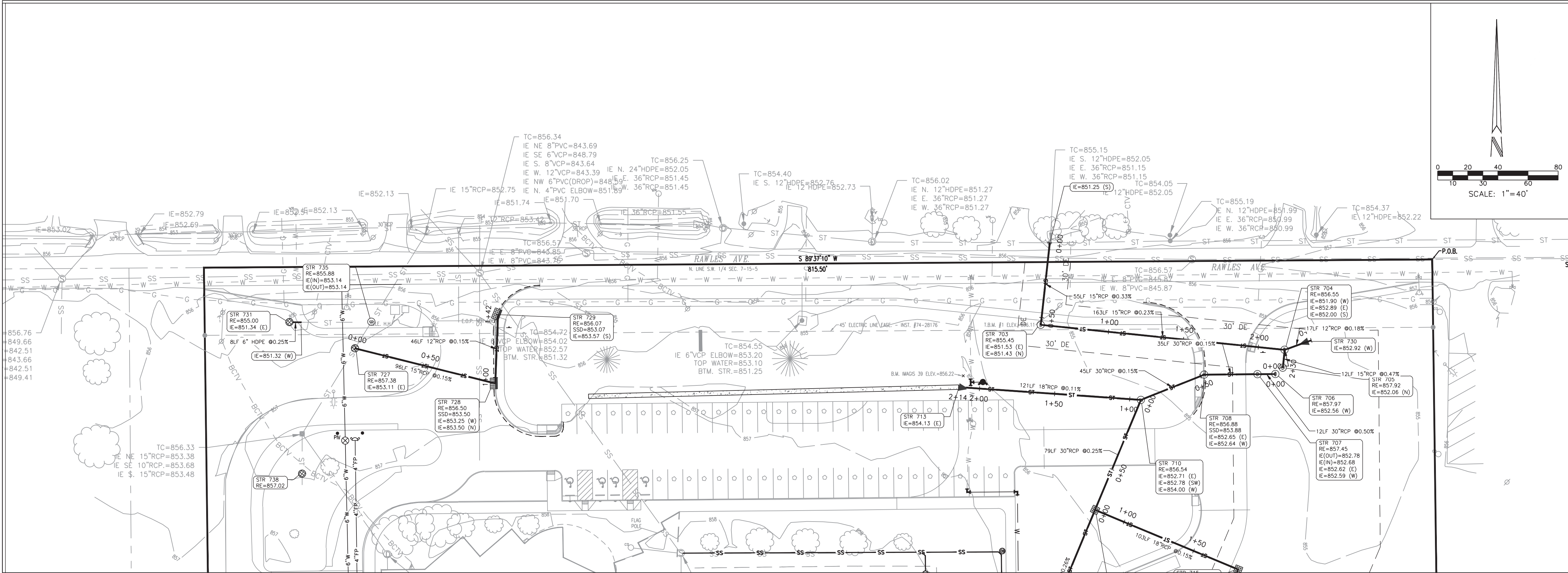
**STORMWATER
POLLUTION
PREVENTION PLAN
POST
CONSTRUCTION**



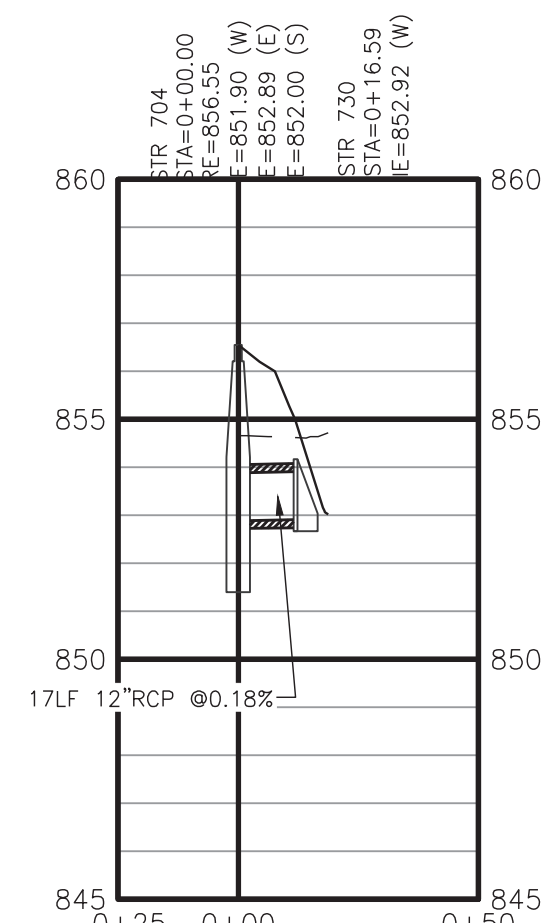
Drawing Number:
C401 B

Project Number:

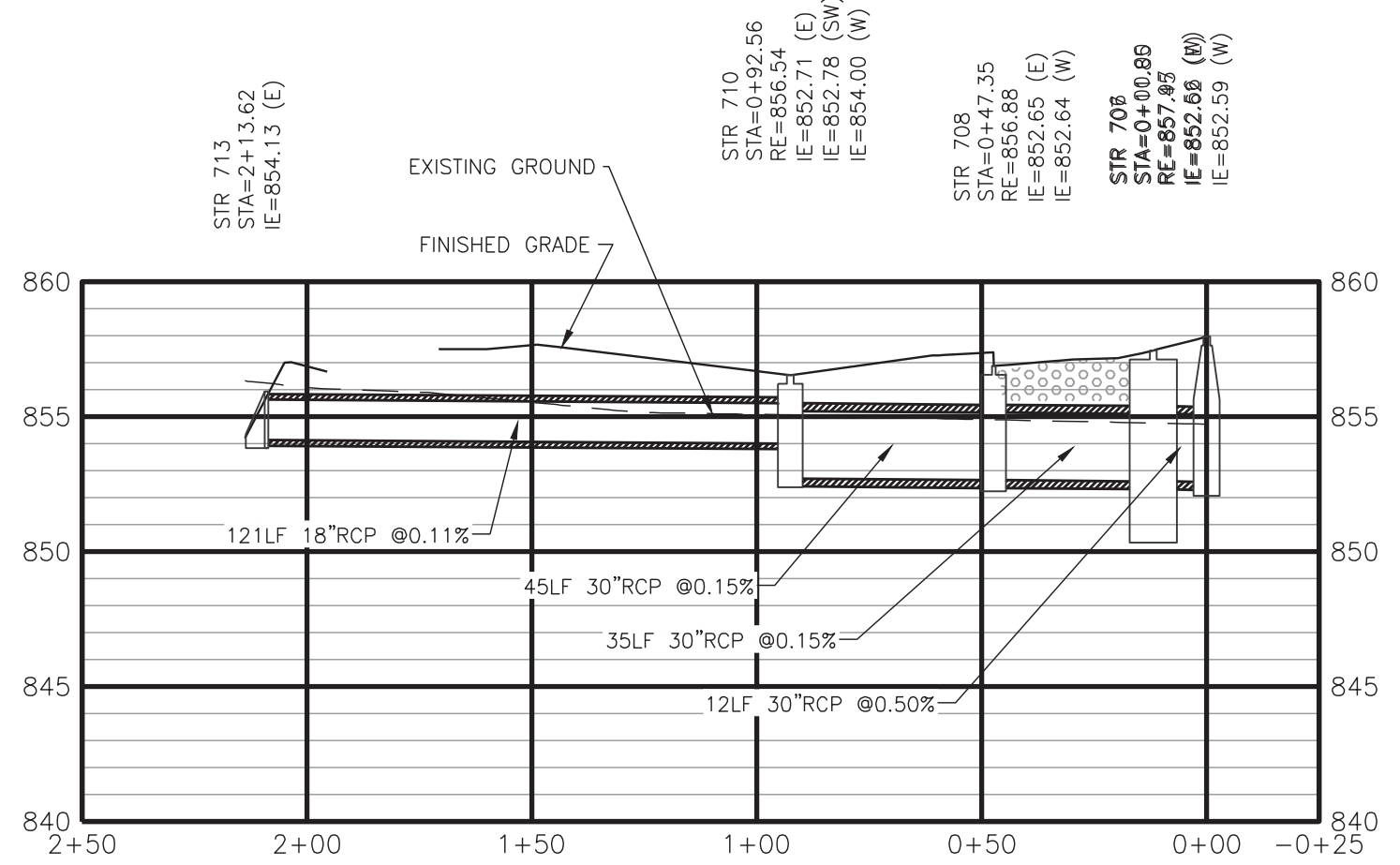
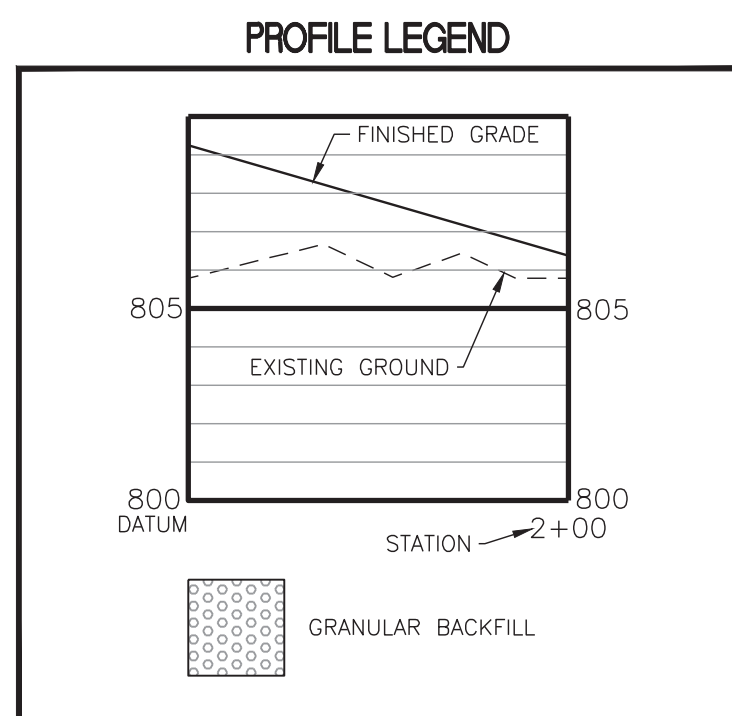
CRIFE No. 200085-20000



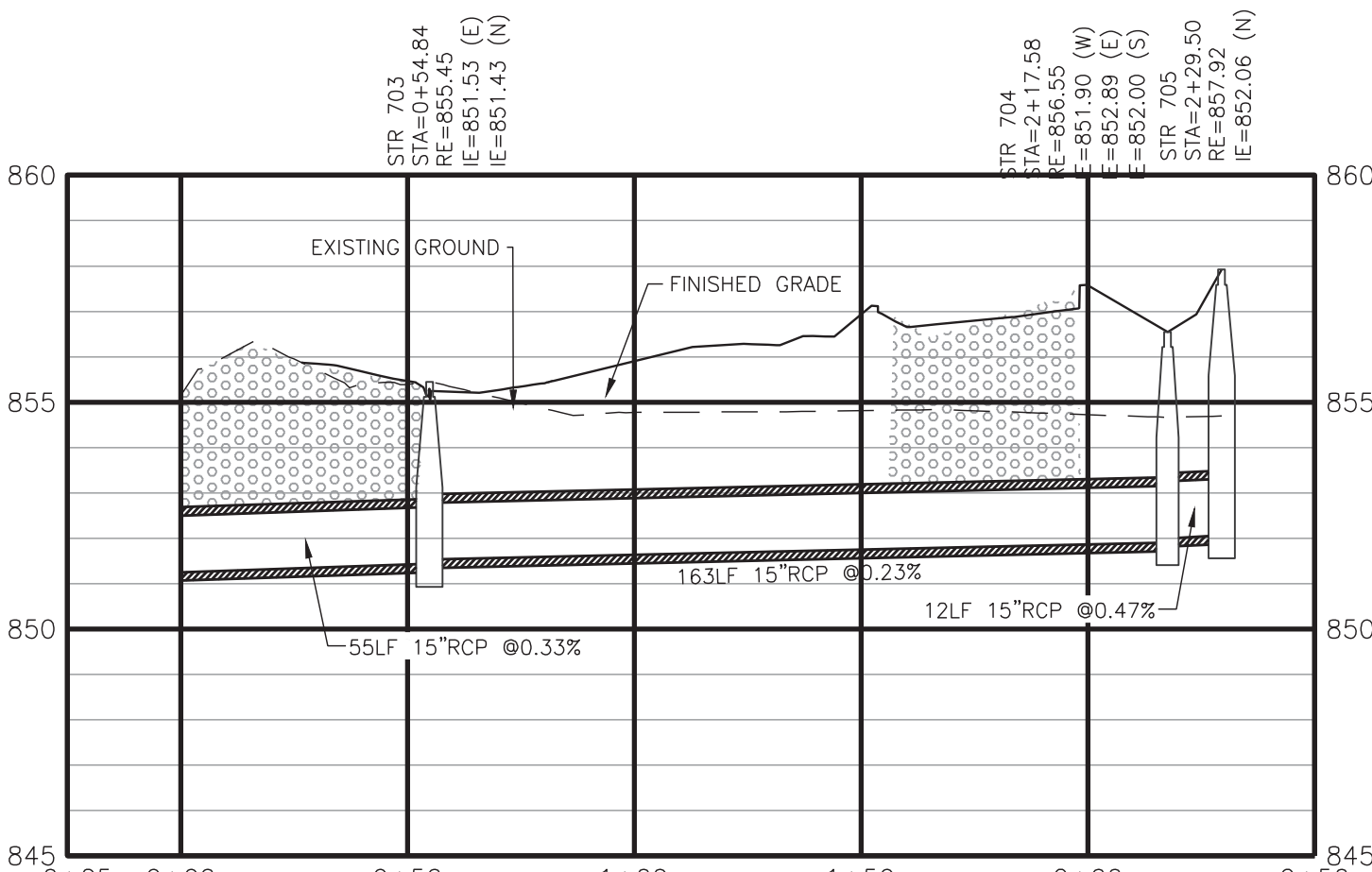
PROFILE - STR 727 - STR 729
HOR SCALE = 1"=40'
VERT. SCALE = 1"=4'



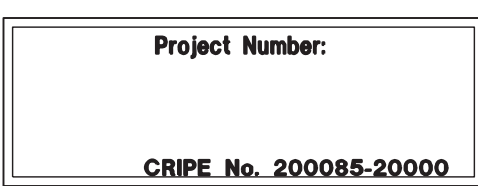
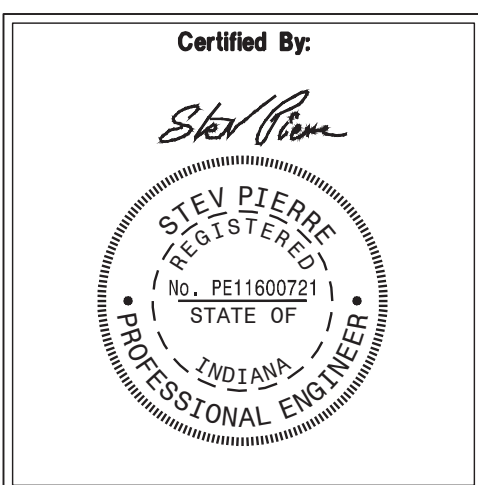
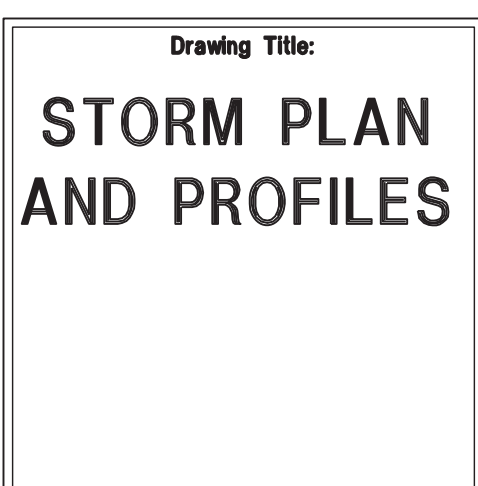
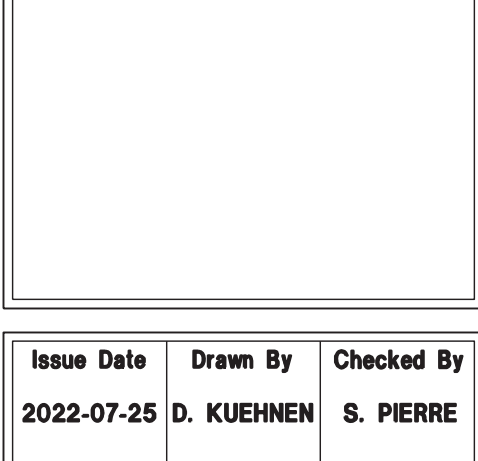
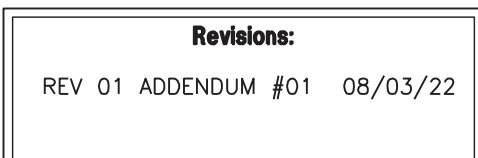
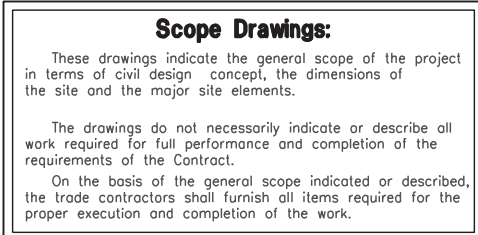
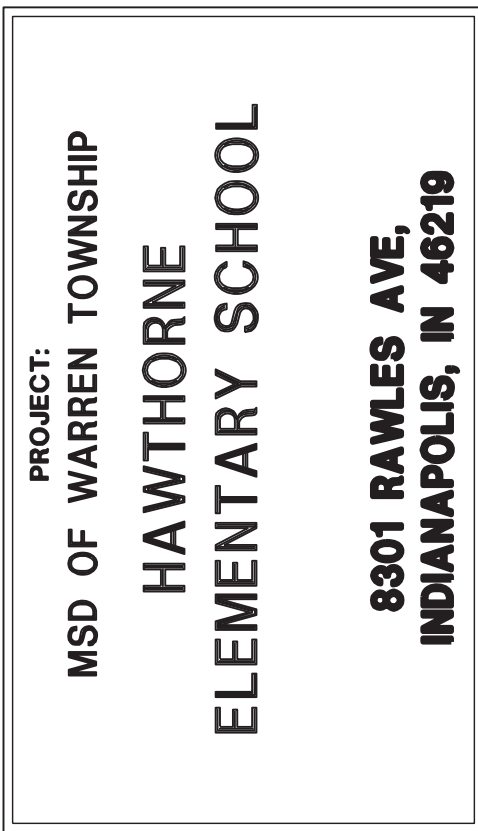
PROFILE - STR 704 - STR 730
HOR SCALE = 1"=40'
VERT. SCALE = 1"=4'

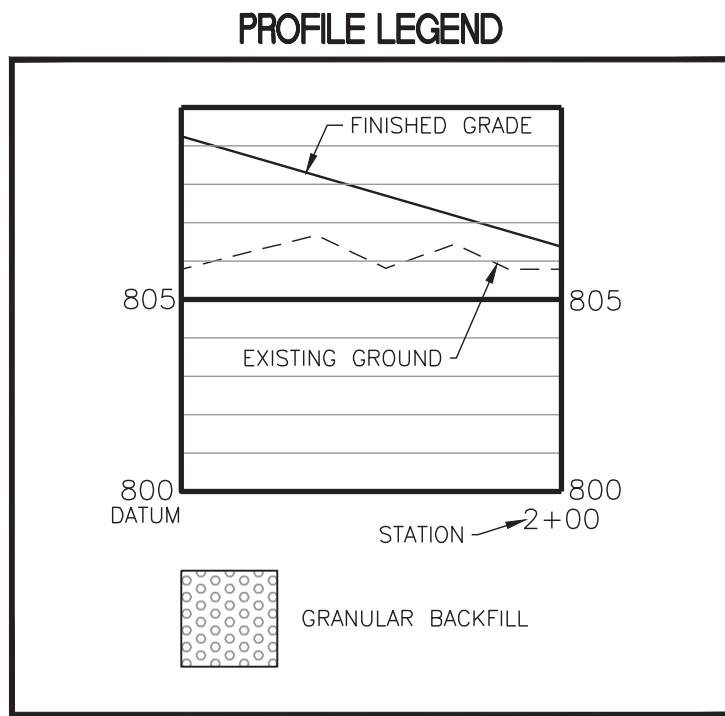
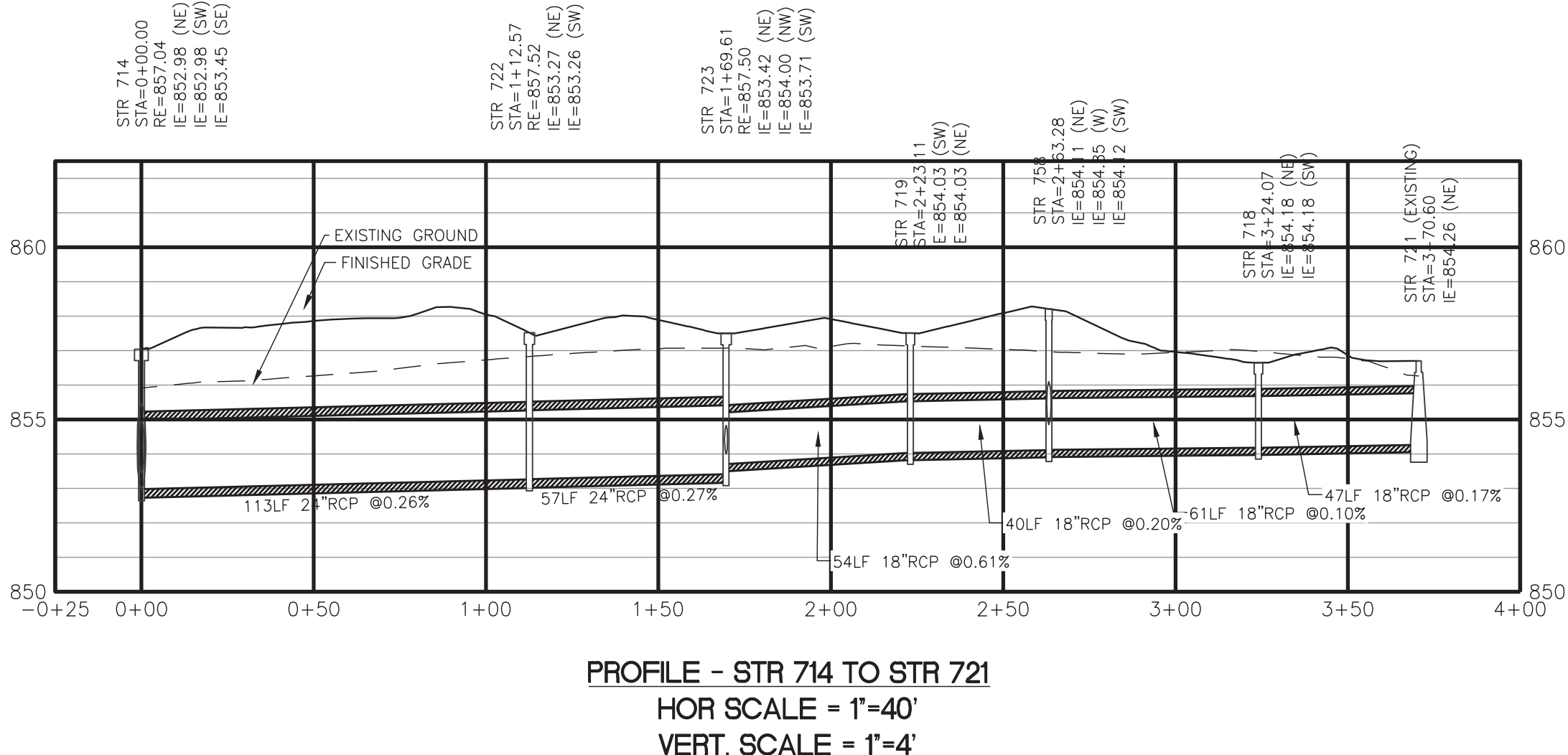
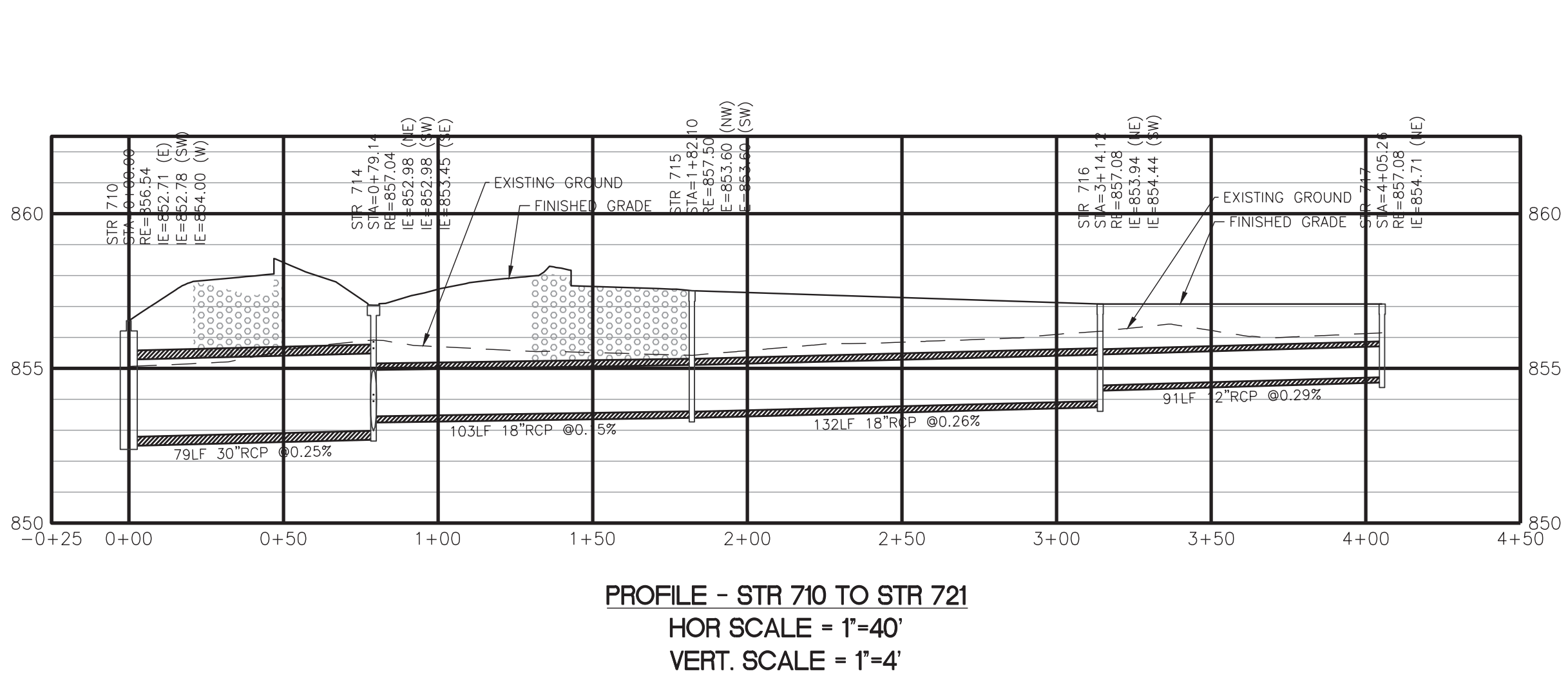


PROFILE - STR 713 TO STR 706
HOR SCALE = 1"=40'
VERT. SCALE = 1"=7'



PROFILE - STR 703 TO STR 705
HOR SCALE = 1"=40'
VERT. SCALE = 1"=4'





UTILITY PLAN LEGEND	
	SECTION 1 BOUNDARY LIMITS
	PROPERTY LINE
	EASEMENT LINE
	RIGHT OF WAY
	FENCE
	STORM SEWER, MANHOLE
	SUBSURFACE DRAIN (SSD), CLEANOUT RISER
	ROOF DRAIN, CLEANOUT
	WATER LINE, METER, VALVE
	SANITARY SEWER, MANHOLE
	SANITARY LATERAL, CLEAN OUT
	SANITARY SEWER FORCE MAIN
	SANITARY SEWER FORCE MAIN LATERAL, CHECK VALVE
	OVERHEAD ELECTRIC, POLE
	BURIED ELECTRIC, MANHOLE
	OVERHEAD CABLE TELEVISION
	BURIED CABLE TELEVISION
	GAS LINE, METER, VALVE
	OVERHEAD TELEPHONE LINE
	BURIED TELEPHONE LINE
	END SECTION
	CURB INLET
	STORM SEWER INLETS
	"TEE" FITTING
	TAPPING SLEEVE & VALVE
	FIRE HYDRANT ASSEMBLY
	FIRE DEPARTMENT CONNECTION
	POST INDICATOR VALVE
	STREET LIGHT
	TRANSFORMER
	ELECTRIC METER
	CABLE RISER PEDESTAL
	REDUCER
	BLOW OFF VALVE
	LOT NUMBER

P.S.,S.,D.&U.E.
S.D.,J.U.&L.M.A.E.
S.D.&U.E.
S.E.

PRIVATE STREET, SANITARY, DRAINAGE AND UTILITY EASEMENT
SANITARY, DRAINAGE, UTILITY, AND LANDSCAPE MAINTENANCE ACCESS EASEMENT
SANITARY, DRAINAGE AND UTILITY EASEMENT
SANITARY SEWER EASEMENT

STORM SEWER PLAN AND PROFILE GENERAL NOTES

- OCCUPATIONAL SAFETY AND HEALTH ADMINISTRATION (OSHA) STANDARDS FOR EXCAVATIONS; FINAL RULE 29 CFR PART 1926, SUBPART "P" APPLIES TO ALL EXCAVATIONS EXCEEDING FIVE (5) FEET IN DEPTH.
- IN ADDITION, EXCAVATIONS EXCEEDING TWENTY (20) FEET IN DEPTH REQUIRE THE DESIGN OF A TRENCH SAFETY SYSTEM BY A REGISTERED PROFESSIONAL ENGINEER.
- ALL STRUCTURES SHALL HAVE CASTINGS, JOINTS, LIFT RINGS, STEPS AND PIPE CONNECTIONS WELL GROUDED, TROWELED SMOOTH AND BRUSH FINISHED.
- ALL STRUCTURES (IE: MANHOLES, INLETS) SHALL HAVE POURED FLOW LINES AND BENCH WALLS. THE FLOW LINES AND BENCH WALLS SHALL BE TROWELED SMOOTH AND BRUSH FINISHED.
- FIELD ADJUSTMENTS OF TOP OF CURB (TC) OF STRUCTURES MAY BE REQUIRED TO MEET FIELD CONDITIONS. ADJUSTMENTS EXCEEDING FIVE TENTHS (0.5) OF A FOOT MUST BE APPROVED BY THE ENGINEER TO DETERMINE THE INTEGRITY OF THE STRUCTURE, AT NO COST TO THE OWNER.
- STORM STRUCTURES WITH INLET CASTINGS SHALL BE SET TO MAINTAIN A POSITIVE DRAINAGE FLOW INTO THE STRUCTURE.
- STORM PIPE INVERTS AT OUTLET STRUCTURES (IE: END SECTIONS), AND PIPE LENGTHS MAY REQUIRE FIELD ADJUSTMENTS TO MEET ACTUAL FIELD CONDITIONS.
- FULL DEPTH GRANULAR BACKFILL SHALL BE REQUIRED UNDER AND WITHIN (5) FEET OF ALL PAVED AREAS, INCLUDING CURBS, EDGE OF PAVEMENT, AND SIDEWALKS.
- PIPE LENGTHS ARE MEASURED FROM CENTER OF STRUCTURE TO CENTER OF STRUCTURE AND INCLUDE END SECTIONS.
- RIM ELEVATIONS (RE) SHALL INDICATE THE ELEVATION THAT WATER WOULD ENTER A STRUCTURE.
- INVERT ELEVATION OF SUB-SURFACE DRAIN (SSD) AT STRUCTURE TO BE THREE (3) FEET BELOW RIM ELEVATION.
- ANY DISCREPANCIES OR CONFLICTS WHICH BECOME APPARENT BEFORE OR DURING CONSTRUCTION SHALL BE BROUGHT TO THE ATTENTION OF THE DESIGN ENGINEER PRIOR TO CONSTRUCTION SO THAT CLARIFICATION OR REDESIGN MAY OCCUR.
- NO BLASTING SHALL BE PERFORMED ON THIS SITE.
- NO SEISMIC VIBRATING OPERATIONS WILL OCCUR ON THIS SITE.
- STRUCTURES DEEPER THAN 4' MUST BE ACCESSIBLE WITH STEPS.
- DEBRIS GUARD TO BE INSTALLED ON ALL OPEN ENDED INLETS.
- ALL STORM SEWER, INCLUDING SSD, SHALL BE CLEANED AND TELEVIEWED AFTER ALL UNDERGROUND UTILITIES ARE INSTALLED.
- ALL BEEHIVE CASTINGS ON A 2'X2' BOX SHALL HAVE A SQUARE RISER WITH A ROUND HOLE.
- WHERE CONNECTIONS ARE MADE TO EXISTING MANHOLES OR INLET STRUCTURES, THOSE STRUCTURES SHALL BE REHABILITATED OR REPLACED TO THOSE MINIMUM STANDARDS OUTLINED IN CHAPTERS 400 AND 500 OF THE CITY OF INDIANAPOLIS STORMWATER SPECIFICATIONS MANUAL, LATEST EDITION. THE REHABILITATION SHALL INCLUDE THE INSTALLATION OF BENCH WALLS, AS WELL AS PRESCRIBED MEASURES TO ELIMINATE THE POTENTIAL FOR MIGRATION OF BACKFILL MATERIALS INTO THE STORMWATER SYSTEMS.

8831 Keystone Crossing, Indianapolis, IN 46240
317.848.7800 | c@csocri.net

Solutions by Design Since 1937

PROJECT:

MSD OF WARREN TOWNSHIP

HAWTHORNE

ELEMENTARY SCHOOL

8301 RAWLES AVE,
INDIANAPOLIS, IN 46219

Scope Drawings:

These drawings indicate the general scope of the project in terms of total design concept, the dimensions of the site and the major site elements.

The drawings do not necessarily indicate or describe all work required for full performance and completion of the requirements of the Contract.

On the basis of the general scope indicated or described, the trade contractors shall furnish all items required for the proper execution and completion of the work.

Revisions:

REV 01 ADDENDUM #01 08/03/22

Issue Date	Drawn By	Checked By
2022-07-25	D. KUEHNEN	S. PIERRE

Drawing Title:

STORM PLAN
AND PROFILES

Certified By:

STEVE PIERRE
REGISTERED
PE 11600721
STATE OF
INDIANA
PROFESSIONAL ENGINEER

Drawing Number:

C702

Project Number:

CRPE No. 200085-20000