

**ADDENDUM
NO. 2**

August 12, 2022

**CROWN POINT NEW TAFT MIDDLE SCHOOL - BID PACKAGE #3 -
ATHLETIC SITE IMPROVEMENTS AND RELATED WORK
Winfield, IN 46307**

TO: ALL BIDDERS OF RECORD

This Addendum forms a part of and modifies the Bidding Requirements, Contract Forms, Contract Conditions, the Specifications, and the Drawings dated July 19, 2022 by Gibraltar Design. Acknowledge receipt of the Addendum in the space provided on the Bid Form. Failure to do so may subject the Bidder to disqualification.

This Addendum consists of Pages ADD 2-1 and attached Addendum No. 2 from Gibraltar Design dated August 12, 2022 and consisting of 2 pages, Specification Section 10 28 40 - Hand Dryers, Re-issued Specification Sections 11 66 43 - Scoreboards, 08 71 00 - Door Hardware, 32 17 25 - Track Striping, and 1 Drawing.

A. SPECIFICATION SECTION 00 00 20 - TABLE OF CONTENTS

1. DIVISION 10 - SPECIALTIES

a. Add:

Specification Section 10 28 40 - Hand Dryers

B. SPECIFICATION SECTION 01 12 00 - MULTIPLE CONTRACT SUMMARY

1. BID CATEGORY NO. 21 - SITEWORK/GENERAL TRADES

a. Add:

Specification Section 10 28 40 - Hand Dryers

ADDENDUM TWO

Addendum Two (AD.02) to the drawings and specifications prepared by Gibraltar Design and The Skillman Corporation for **New Taft Middle School – Athletic Site Improvements and Related Work** for Crown Point Community School Corporation, Crown Point, Indiana.

All Contractors bidding on this project shall read all of the items covered below and shall comply with all of the requirements as set forth, including any necessary refinements or additions generated by this Addendum and required by the intent of the original contract documents. All Contractors shall acknowledge on their bid form that they have received this Addendum and Addendum One and include the appropriate content of same within their bid proposal.

SPECIFICATIONS

- 1. Specification Section 10 28 40 Hand Dryers**
 - A. Add specification section 10 28 40 in its entirety, Included in this addendum.
- 2. Specification Section 10 75 00 Flagpole**
 - A. Revise paragraph 2.2.C in its entirety to: "Halyard: Internal type."
- 3. Specification Section 11 66 43 Scoreboards**
 - A. Revise specification section 11 66 43 in its entirety, Included in this addendum.
- 4. Specification Section 32 17 25 Track Striping**
 - A. Revise specification section 32 17 25 in its entirety, Included in this addendum.
- 5. Specification Section 32 18 23 All Weather Latex Track Surface**
 - A. Paragraph 2.1 add seal-flex, Midwest Track Builders as an acceptable Manufacturer.

DRAWINGS

- 6. Sheet S-102**
 - A. Layout of trusses are schematic in nature. Location of girder trusses can be adjusted as needed based on final design requirements/efficiency as determined by truss designer.
- 7. Sheet A-401**
 - A. Refer to attached revised full-size drawing, included in this Addendum, for the following revisions:
 1. Wall sections 1 and 3. Add flashing and cavity vents.
- 8. Sheet E-002**
 - A. Panel LP-COMM: Change Circuit Number 34 from Game Clock to Spare
- 9. Sheet ES101**
 - A. Remove southwest game clock noted as WP34

Pages 1 through 2, inclusive, 3 Specification Section, and one (1) full-size drawing, constitute the total makeup of **Addendum Two**.



Joseph P. Briggs

Y:\21-107 Crown Point CSC - New Middle School\Specs\Site\Addendum 2\Site - AD02.doc

SECTION 10 28 40

HAND DRYERS

1 General

1.1 Section Includes

- A. Hand dryers.

1.2 Related Sections

- A. Section 26 05 00 - Basic Electrical Requirements.

1.3 Submittals

- A. Submit product data under provisions of Division 1 and Section 26 05 00.

2 Products

2.1 Hand Dryers - Acceptable Manufacturers

- A. Bobrick Washroom Equipment, Inc.
- B. Excel Dryer.
- C. World Dryer Corporation.

2.2 High Speed Hand Dryers - Automatic

- A. Hand dryers are to be the high speed type capable of drying hands completely in 10 to 15 seconds.
- B. Cover: One-piece, heavy-duty, rib-reinforced, One-piece stainless steel. Cover to include air outlet and intake. Air intake and outlet to be inherently tamper-resistant or be provided with tamper-resistant grille. Cover is to be secured to unit base or wall box with concealed, vandal-resistant, recessed screws.
- C. Motor: Universal, 5/8 HP, 20,000 rpm, heavy duty motor proving an air velocity of 16,000 LFM (linear feet per minute) at the air outlet and 14,000 LFM at the four inches below the air outlet.
- D. Heating Element: 900-watt nickel-chrome element protected by an automatically resetting thermal overload switch.
- E. Electrical Characteristics: 120 volt, 1,500 watts.

- F. Electronic Control: Infrared optical sensor to automatically turn dryer on when hands are held under the air outlet opening and across the path of sensor. Dryer shall turn off when hands are removed. Sensor to automatically shut off approximately 35 seconds after dryer turns on if hands are not removed or an inanimate object is placed across the air outlet opening. Sensor to reset after object is removed.
- G. Warranty: Dryer to include manufacturer warranty of three years on the dryer motor brushes and 10 year limited warranty for all other dryer components.
- H. Hand Dryer shall be Excel Dryer “XLerator” Model XL-SB (stainless steel). Provide dryer with Excel Dryer ADA recess mounting kit designed for the specified dryer.

3 Execution

3.1 Installation

- A. Install in accordance with manufacturer’s instructions.
- B. Provide a separate neutral conductor for each dryer. Common neutrals will not be allowed.
- C. Hand Dryer Mounting Heights:
 - 1. Install dryers at the mounting heights recommended by the dryer manufacturer unless otherwise indicated. Verify mounting height of each dryer with the Architect prior to rough-in of installations.
 - 2. Do not install dryers less than 18 inches above projections which may interfere with the application of the automatic sensor.

END OF SECTION

SECTION 11 66 43

SCOREBOARDS

1 General

1.1 Section Includes

- A. Provide complete and operational football scoreboard systems for each field.
- B. Provide control console scoreboard system.
- C. Provide control cabling and accessories for each scoreboard system.

1.2 Related Sections

- A. Section 26 05 00 - Basic Electrical Requirements.
- B. Section 26 05 29 - Supporting Devices.

1.3 Scope Of Work

- A. Provide football scoreboards complete with delay of game timer set, control consoles and all wiring, and ready for operation.

1.4 Submittals

- A. Submit shop drawings and product data under provisions of Division 1 and Section 26 05 00.
- B. Include basic system diagrams, data sheets, type, dimensions, fabrication details, fittings, supports, accessories, and finishes.

1.5 Regulatory Requirements

- A. Underwriters' Laboratory (UL) listed.

1.6 Delivery, Storage, And Handling

- A. Deliver, store, protect, and handle products to site under provisions of Division 1.
- B. Accept scoreboard equipment on site. Inspect for damage.
- C. Protect equipment during storage according to manufacturer's instructions.

1.7 Warranty

- A. Provide warranty under provisions of Division 1.
- B. Warranty: Include coverage for 100 percent replacement of all defective parts or workmanship.

- C. Extended Warranty: Furnish to Owner all extended warranties provided by manufacturers.
- D. Furnish a copy of this warranty together with the operating instructions and maintenance data.

1.8 Operation And Maintenance Data

- A. Submit operation and maintenance data under provisions of Division 1 and Section 26 05 00.
- B. Include complete owner/user operating instructions and maintenance information.

2 Products

2.1 Acceptable Manufacturers

- A. Football system:
 - 1. Daktronics, Inc.
 - 2. Fair-Play Scoreboards, A Division of Trans-Lux Corporation.
 - 3. Nevco Scoreboard Company.

2.2 Football Scoreboard Systems

- A. Provide one complete football scoreboard system at each of the locations indicated. Each system shall include the following:
 - 1. Control consoles with control console carrying cases.
 - 2. Delay-of-Game timer set.
- B. System Equipment:
 - 1. The scoreboards shall be Nevco Model 3602 or approved equal, provide a total of One (1) scoreboard, refer to site plan for location."
 - 2. The control consoles shall be Nevco Model MPC or approved equal. Total of two control consoles required. Provide each control console with a console carrying case as manufactured by the controller manufacturer.
 - 3. The "Delay-of-Game" timer set shall be a Nevco Model DGT-6 or approved equal. Provide timer set with control switch console. Provide a steel mounting frame for each display unit.
 - 4. Daktronics equivalent model.

- C. Scoreboard Features:
1. Clock Display:
 - a. Self-illuminated colon.
 - b. Bi-directional UP or DOWN count.
 - c. Direct setting of minutes and seconds capability.
 - d. Timing capacity of 0:00 to 99:59.
 - e. Automatic second by second display of time remaining with instant reset for regular or short periods.
 - f. Automatic timer stop at end of period (0:00).
 2. High output dual tone vibrating type operated horn on scoreboard to operate automatically at 0:00, with setting to omit automatic horn, and manual sounding at any time.
 3. Progressive team score displays from 00 to 99 for two teams.
 4. Period number display.
 5. White letter captions for the following:
 - a. Team names for score displays.
 - 1) Home score caption shall be Team name in place of "HOME". Verify team name with Architect and Owner.
 - 2) Visitor score caption shall be "VISITOR".
 - b. Period display.
- D. Scoreboard Construction:
1. All aluminum, totally enclosed, weatherproof case.
 - a. Case Finish:
 - 1) Case finished in a non-reflecting polyurethane epoxy finish.
 - 2) Finish color of scoreboards shall be as selected by the Architect.
 2. Block style figure numerals formed by 7 high by 4 wide rectangular pattern of solid-state, long-life, high-output LED displays. All numerals to be at least 18 inches high, except period numeral may be 15 inches high.
 3. All solid-state, low-voltage technology control logic and display switching functions.
- E. Provide mounting brackets of sufficient strength and quantities for scoreboards.

- F. Operator's Control Console and Carrying Case:
 - 1. Microprocessor based control console with built-in information display and auxiliary time out timer with display.
 - 2. Provide a durable carrying case for the each control console.
- G. Provide a service platform below the front face of the each main scoreboard, to facilitate servicing, as indicated on the Contract Documents, and if not indicated in Documents, provide per manufacturers standard.
- H. Provide a sound system speaker platform, per standards of manufacturer above the main scoreboard, or as indicated on the Contract Documents, for mounting the football field sound reinforcement system loudspeakers. Coordinate the platform design and age type carrying case for the each control console.
- I. "Delay Of Game" Timer Set:
 - 1. Two individual delay-of-game clocks each with two-digit displays, wire mesh sun screens for lamp protection, and clock controller.
 - 2. Automatic second by second display of time remaining with instant reset. Adjustable timing period. Automatic timer stop at end of period (00).
 - 3. High output dual tone vibrating type operated horn on scoreboard to operate automatically at end of timing period.
 - 4. Totally enclosed case of non-reflecting black polyurethane epoxy finished aluminum.
 - 5. 30 inch high block style figuregram numerals formed by 7 high by 4 wide rectangular pattern of solid-state, long-life, high-output LED displays.
 - 6. All solid-state, low-voltage technology control logic and display switching functions.
 - 7. Clock timer system time control switch connected through scoreboard control console console for instant correction and reset.
 - 8. Mounting brackets of sufficient strength and quantities for both displays.
- J. Control Cable and Accessories:
 - 1. Provide control console receptacles for wall or floor box mounting as indicated.
 - 2. Provide control cabling as required to connect all control points with the scoreboards and delay-of-game timers.

3. Provide one (1) portable 25____ -foot long flexible control cable for each indicated scoreboard control console to provide connection to the scoreboard control console. Provide cables with all necessary connectors.
 4. Provide a total of two (2) control cable “tee” connectors to allow one control console to control two scoreboards simultaneously.
- K. Electrical Power Feed Equipment: Provide each scoreboard location with the following:
1. NEMA 3R type, three-pole, 30-ampere disconnect switch for scoreboard power feed.
 2. NEMA 3R type circuit breaker box with two single-pole, 15-ampere, ground-fault circuit interrupter type circuit breakers to feed the scoreboard.
 3. Provide ground rod as recommended by the scoreboard manufacturer.
 4. Provide other equipment as recommended by the scoreboard manufacturer.
 5. All equipment and installations shall be as recommended by the scoreboard manufacturer.
- L. Scoreboard Mounting: Provide theeach scoreboard with steel support beams and mounting hardware as follows:
1. Provide a minimum of two (2) steel wide-flanged "H" beams for each scoreboard to properly support the scoreboards based on local soil conditions and wind loads. Beams shall be sized to mount the scoreboards with bottom of cases at 12 feet above grade level.
- M. Provide mounting brackets of sufficient strength and quantities for scoreboards.
- N. Delay-Of-Game Timer Electrical Power Feed Equipment: Provide each delay-of-game timer location with the following:
1. NEMA 3R type, two-pole, 30-ampere disconnect switch for delay-of-game timer power feed.
 2. NEMA 3R type circuit breaker box with one single-pole, 10-ampere, ground-fault circuit interrupter type circuit breaker to feed the delay-of-game timer.
 3. Provide ground rod as recommended by the delay-of-game timer manufacturer.
 4. Provide other equipment as recommended by the delay-of-game timer manufacturer.

5. All equipment and installations shall be as recommended by the delay-of-game timer manufacturer.
- O. Delay-Of-Game Timer Mounting: Provide each delay-of-game timer with steel support beams and mounting hardware as follows:
 1. Provide a minimum of two (2) steel wide-flanged "H" beams for each scoreboard to properly support the delay-of-game timers based on local soil conditions and wind loads. Beams shall be sized to mount the scoreboards with bottom of cases at 12 feet above grade level.
 2. Provide mounting brackets of sufficient strength and quantities for the delay-of-game timers.

3 Execution

3.1 Installation

- A. Install in accordance with manufacturer's instructions.
- B. Install in the locations and mounting heights indicated in the Contract Documents.
- C. Securely mount plumb and square in place.
- D. Football Scoreboard Systems:
 1. Mount scoreboards with bottom of case at 12 feet above grade level.
 2. Mount scoreboards on steel wide-flanged "H" beams to properly support the scoreboards, and scoreboard service platforms, and sound system speaker platform based on local soil conditions and wind loads.
 3. Mount delay-of-game timer displays on steel wide-flanged "H" beams to properly support the displays based on local soil conditions and wind loads.

3.2 Demonstration And Instruction

- A. Upon completion of installations and preliminary testing, notify the Architect that the system is systems are ready for final testing and demonstration. The Architect, at his option, may select a specific time and date suitable to all parties and have a representative in attendance during the entire final testing.
 1. Demonstrate all system functions as hereinbefore specified to perform as specified.
 2. Test and demonstrate the system systems to equal or exceed the specified system criteria.

- B. Provide on-site instruction and training to the Owner's designated representatives in the setup, operation and use of equipment.
 - 1. All instruction and training is to be given by an equipment source representative.
 - 2. All instruction and training is to be given after completion of the installation.
 - 3. Arrange instruction and training sessions at Owner's convenience.
 - 4. Provide one instruction and training session for each separate system installation.
 - 5. Each session is to be a minimum of one hour in length, except for the swimming pool scoreboard system with touch pad system and event timer/printer which is to be a minimum of 3 hours in length.
- C. Turn over all non-installed system equipment called for in the Contract Documents to the Owner's designated representative.

END OF SECTION

SECTION 32 17 25

TRACK STRIPING

1 General

1.1 Section Includes

- A. Marking of all weather track and field event surfaces.

1.2 Related Sections

- A. Section 32 18 23 - All Weather Latex Track Surface.

1.3 References

- A. National Federation of State High School Associations "Track and Field Rule Book"

1.4 System Description

- A. Painted lines, numbers, and symbols on previously constructed all weather surface.

1.5 Submittals

- A. Submit product data and color samples under provisions of Division 1.
- B. Submit detailed layout shop drawing.
- C. Submit certification of striping.

2 Products

2.1 Paint

- A. Line and Marker Paint General: Provide a complete system including primer, if any, compatible with track surface and recommended in writing by track surface and paint manufacturers for use indicated.
- B. SuperPaint Exterior Acrylic Latex Paint as manufactured by Sherwin Williams, Des Moines, Iowa.
- C. Ure-Flex polyurethane as manufactured by KM Coatings Mfg., Inc., Phoenix, Arizona.
- D. Plexicolor as manufactured by California Products Company, Cambridge, Massachusetts.

3 Execution

3.1 Surface Preparation

- A. Verify that surface is clean, dry, free of contaminants and loose particles, and cured prior to application of any paint.

3.2 Layout

- A. Locate each critical point by precise measurement with surveying instruments.
- B. Prepare a detailed layout, complete with color samples, and submit same for approval by the Architect and Owner prior to starting any painting.
- C. Certify striping by a registered surveyor to ensure that layout conforms to National Federation Rule Book.
 - 1. Provide letter of certification to Owner.
- D. Mark Field Event Runways as Below:
 - 1. Long Jump Runway:
 - a. 8 inches wide, girl's and boy's scratch lines, per IHSA Standard (each end).
 - b. 2 inch wide edge stripe (each side).
- E. Use two or more colors as approved by the Owner.

3.3 Paint Application

- A. Apply paint in accordance with track surface and paint manufacturer's striping requirements.

3.4 Marking Requirements

- A. Mark track into 6, 42 inch wide lanes with 2 inch wide stripes.
 - 1. The lane width includes the stripe on the runner's right.
- B. Mark track perpendicular to lane lines with 2 inch wide lines as enumerated below.
 - 1. Starting Lines (Completely Across Track):
 - a. 100 meter dash.
 - b. 1600 meter run (Arc start).
 - c. 3200 meter run (Arc start).
 - d. 110 meter.

2. Starting Lines (Appropriate Staggers):
 - a. 200 meter dash.
 - b. One turn event.
 - c. Two turn event.
 - d. Three turn event.
 - e. 300 meter hurdles.
3. Finish Line (Completely Across Track):
 - a. All events finish at same location.
4. Exchange Zone Lines (Appropriate Staggers, Each Lane):
 - a. 400 meter relay and speed zone markings.
5. Relay Running Circle (Appropriate Staggers, Each Lane):
 - a. 400 meter relay.
6. Hurdle Lines (Each Hurdle Position, Each Lane):
 - a. 110 meter hurdles.
 - b. 300 meter hurdles.
 - c. 100 meter hurdles (for girls).
7. Lane Numbers (1 through 9), 36 inch high letters.
8. Event and Stripe Designations: Provide the following designations, in 2 inch high letters, immediately adjacent to the appropriate line:
 - a. "100 START", behind and parallel to the 100 meter dash starting line.
 - b. "200 START", behind and parallel to starting line in each lane.
 - c. "110H START", behind and parallel to starting lanes 1 and 9 only.
 - d. "1 TURN STAGGER START", behind and parallel to starting lanes 1 and 9 only.
 - e. "2 TURN STAGGER START", behind and parallel to starting line in each lane.
 - f. "3 TURN STAGGER START", behind and parallel to starting line in each lane.
 - g. 110H behind and parallel to each hurdle location line in lanes 1 and 9 only.

- h. Directional arrows each side "x zone".
 - 1) Directional Arrows: Chevrons at each side of exchange zone.
- i. Provide staggered baton exchange zone lines in lanes 1 and 9 only per IHSAA Standards and recommendations.
 - 1) Provide zones for 1600 meter relay and zones for 400 meter relay per IHSAA Standards.

C. Verify all events, locations, and colors with Owner prior to striping.

END OF SECTION

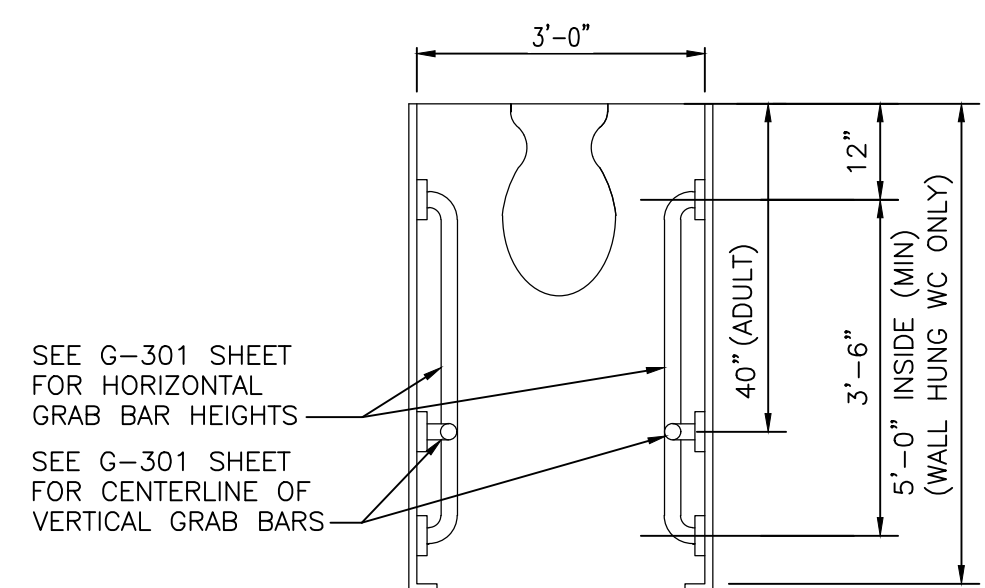


GIBRALTAR DESIGN

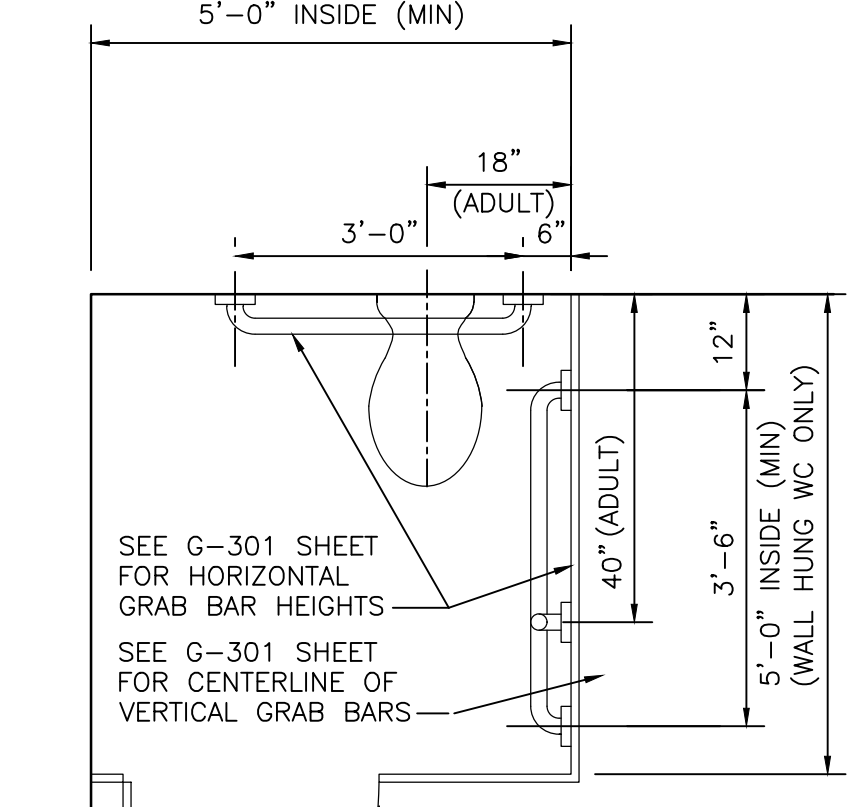
ARCHITECTURE • ENGINEERING • INTERIOR DESIGN

PROJECT CROWN POINT NEW TAFT MIDDLE SCHOOL - ATHLETIC SITE IMPROVEMENTS AND RELATED WORK

FOR:
CROWN POINT COMMUNITY
SCHOOL CORPORATION
CROWN POINT, INDIANA



AMBULATORY TOILET COMPARTMENT

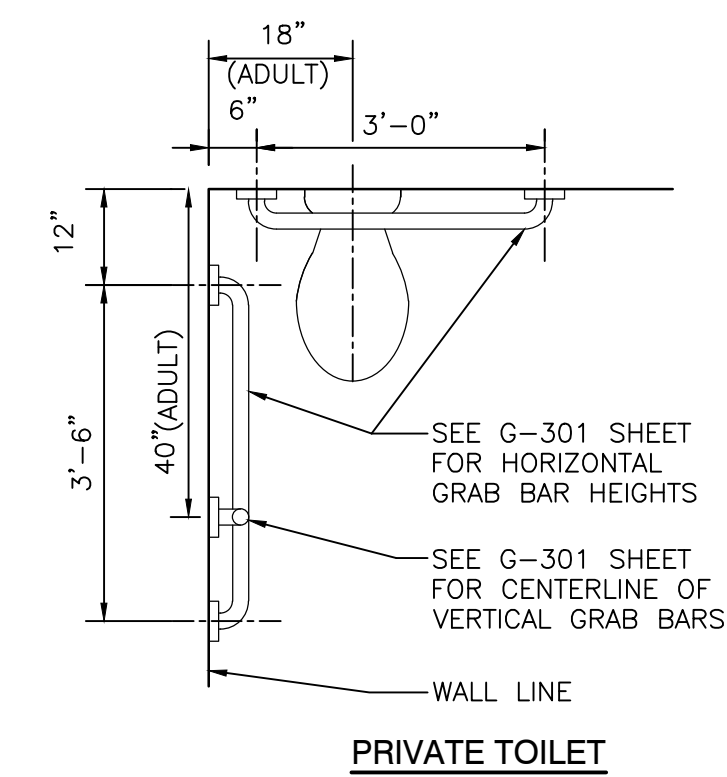


TOILET COMPARTMENT

ACCESSIBLE FACILITIES

SCALE: 1/2" = 1'-0"

5
A-401



PRIVATE TOILET

PLASTIC LAMINATE CASEWORK SCHEDULE

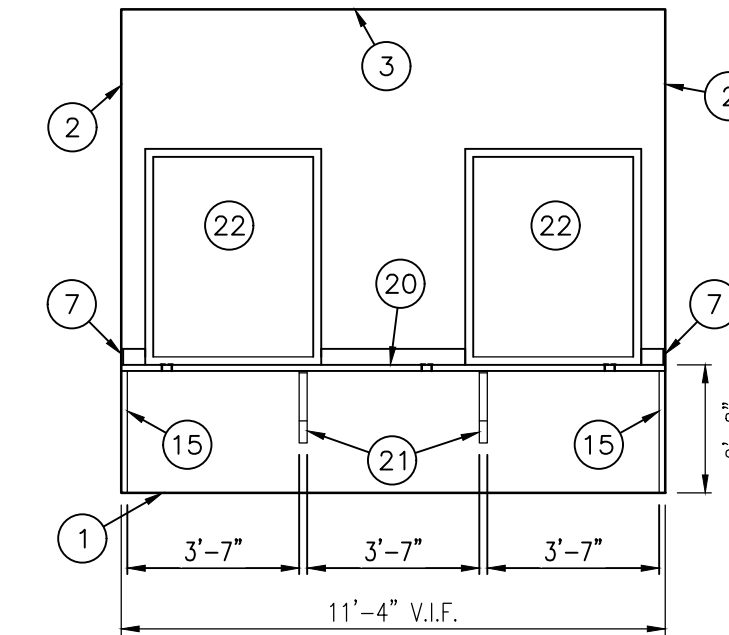
MARK	CATALOG NUMBER	WIDTH	DESCRIPTION
B1	10138	48"	18"D X 29"H OPEN SHELVING WITH CENTER DIVIDER BASE CABINET
B2	10432	33"	29"D X 32"H 2 DRAWERS, 2 DOORS BASE CABINET
SB1	10480	54"	29"D X 32"H FALSE FRONT DOORS SINK BASE CABINET

GENERAL NOTES

- A. FOR SCHEDULING PURPOSES ONLY, MODEL NUMBERS ARE TAKEN FROM STEVENS INDUSTRIES, INC. (UNLESS NOTED OTHERWISE) AND ARE FOR CABINET REQUIREMENTS ONLY. SEE SPECIFICATIONS FOR CABINET CONSTRUCTION METHODS.
- B. FILLER PANELS, TRIM, AND MOLDING PROVIDED SHALL BE CONTINUOUS AS NECESSARY TO MAKE CASEWORK CONTIGUOUS TO ADJACENT PARTITION, CEILING, AND/OR BULKHEAD.
- C. WHERE CASEWORK REQUIRES SHIMMING, ONLY APPROVED METAL SHIMS SHALL BE USED.
- D. CABINETS LOCATED IN FRONT OF A PIPE CHASE SHALL HAVE REMOVABLE BACKS.
- E. ALL BACK SPLASHES AND END SPLASHES SHALL BE 4" HIGH UNLESS OTHERWISE NOTED.
- F. VERIFY ALL CASEWORK DIMENSIONS WITH CASEWORK MANUFACTURER.
- G. 4" HIGH VINYL COVE BASE AT ALL TOE SPACE AREAS AND AT EXPOSED SURFACES AND SIDES OF CABINETS ADJACENT TO THE SPACES. BY FLOORING CONTRACTOR.
- H. FIELD VERIFY ALL DIMENSIONS.
- I. REFER TO ELECTRICAL DRAWINGS AND SCHEDULES FOR DEVICE TYPES, HEIGHTS AND LOCATIONS.
- K. REFER TO PLUMBING DRAWINGS AND SCHEDULES FOR FIXTURE TYPES AND LOCATIONS.
- L. ALL EXPOSED SURFACES TO BE PLASTIC LAMINATE FINISHED, INCLUDING OPEN INTERIORS OF CABINETS.
- M. ALL ADJOINING CABINETS SHALL BE ALIGNED.
- N. ALL EXPOSED ENDS ARE TO BE FINISHED.
- O. ALL CABINETS TO BE LOCKABLE. KEY ALIKE BY ROOM.
- P. ALL WALL AND FULL HEIGHT CABINETS TO RECEIVE PLASTIC LAMINATE SLOPE TOP, UNLESS OTHERWISE NOTED/SCHEDULED.
- Q. CASEWORK AND/OR MILLWORK INSTALLER SHALL PROVIDE ALL FILLERS AND SCRIBES AS REQUIRED FOR A COMPLETE AND FINISHED INSTALLATION.
- R. PROVIDE SEALANT JOINT AT ALL JUNCTIONS OF CASEWORK AND/OR MILLWORK / COUNTERTOPS WITH ADJACENT WALLS.
- S. ALL FAUCETS SHALL HAVE A.D.A. COMPLIANT LEVER HANDLES AT ACCESSIBLE STATIONS.
- T. ALL CUTTING AND DRILLING OF CASEWORK AND/OR MILLWORK AS REQUIRED FOR INSTALLATION OF PIPING OR CONDUIT SHALL BE BY THE CASEWORK AND/OR MILLWORK INSTALLER RESPECTIVELY.

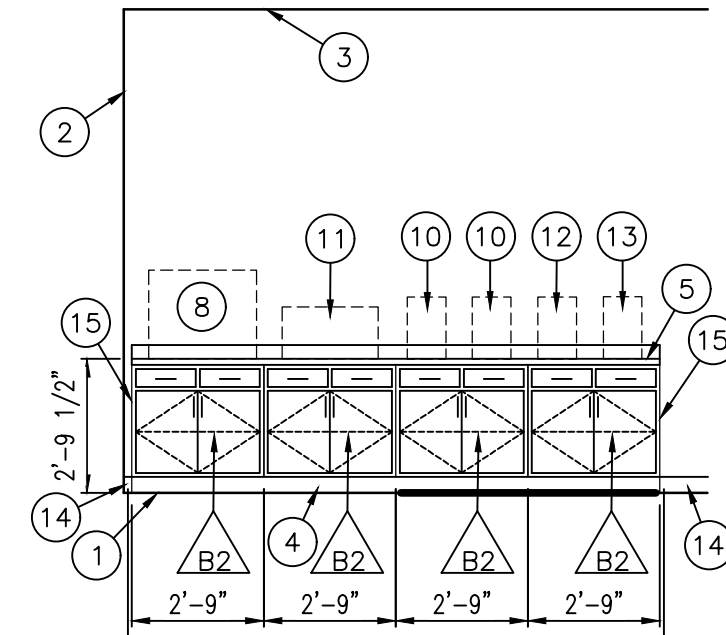
KEY NOTES

- 1 LINE OF FINISHED FLOOR
- 2 WALL LINE
- 3 CEILING LINE
- 4 4" TOE SPACE WITH VINYL BASE
- 5 1" OVERHANG SOLID SURFACE COUNTERTOP WITH 4" BACKSPLASH
- 6 FILLER STRIP - FINISH TO MATCH FACE OF CABINETS
- 7 4" END SPLASH
- 8 HOT DOG WARMER BY OWNER
- 9 NOT USED
- 10 CHEESE DISPENSER BY OWNER
- 11 MICROWAVE BY OWNER
- 12 COFFEE MAKER BY OWNER
- 13 HOT CHOCOLATE MAKER BY OWNER.
- 14 4" VINYL BASE, BY FLOORING CONTRACTOR
- 15 FINISHED BACK/END PANEL
- 16 PAPER TOWEL DISPENSER (OFCI)
- 17 SOAP DISPENSER (OFCI)
- 18 FILLER PANEL - FINISH TO MATCH FACE OF CABINETS.
- 19 SINK REFER TO PLUMBING DRAWINGS
- 20 25" DEEP SOLID SURFACE COUNTER TOP WITH 4" BACKSPLASH, CONTRACTOR TO CONFIRM 3 GROMMET LOCATIONS WITH OWNER
- 21 METAL SUPPORTS, GREY COLOR
- 22 ROLLING OVERHEAD DOOR



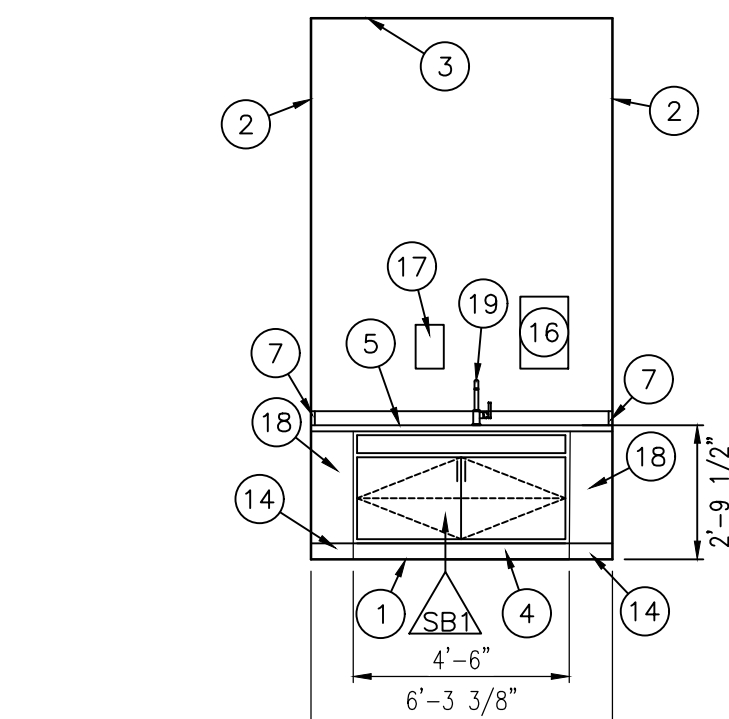
ELEVATION

CABINET: PL1
COUNTERTOP: SS1
SCALE: 1/4"=1'-0"
ROOM: A-101



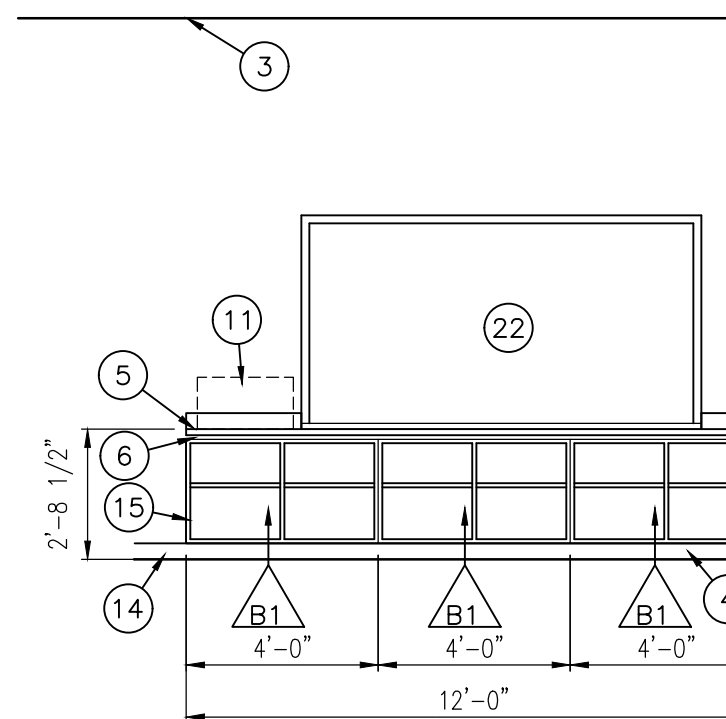
ELEVATION

CABINETS: PL1
COUNTERTOP: SS1
SCALE: 1/4"=1'-0"
ROOM: A-107



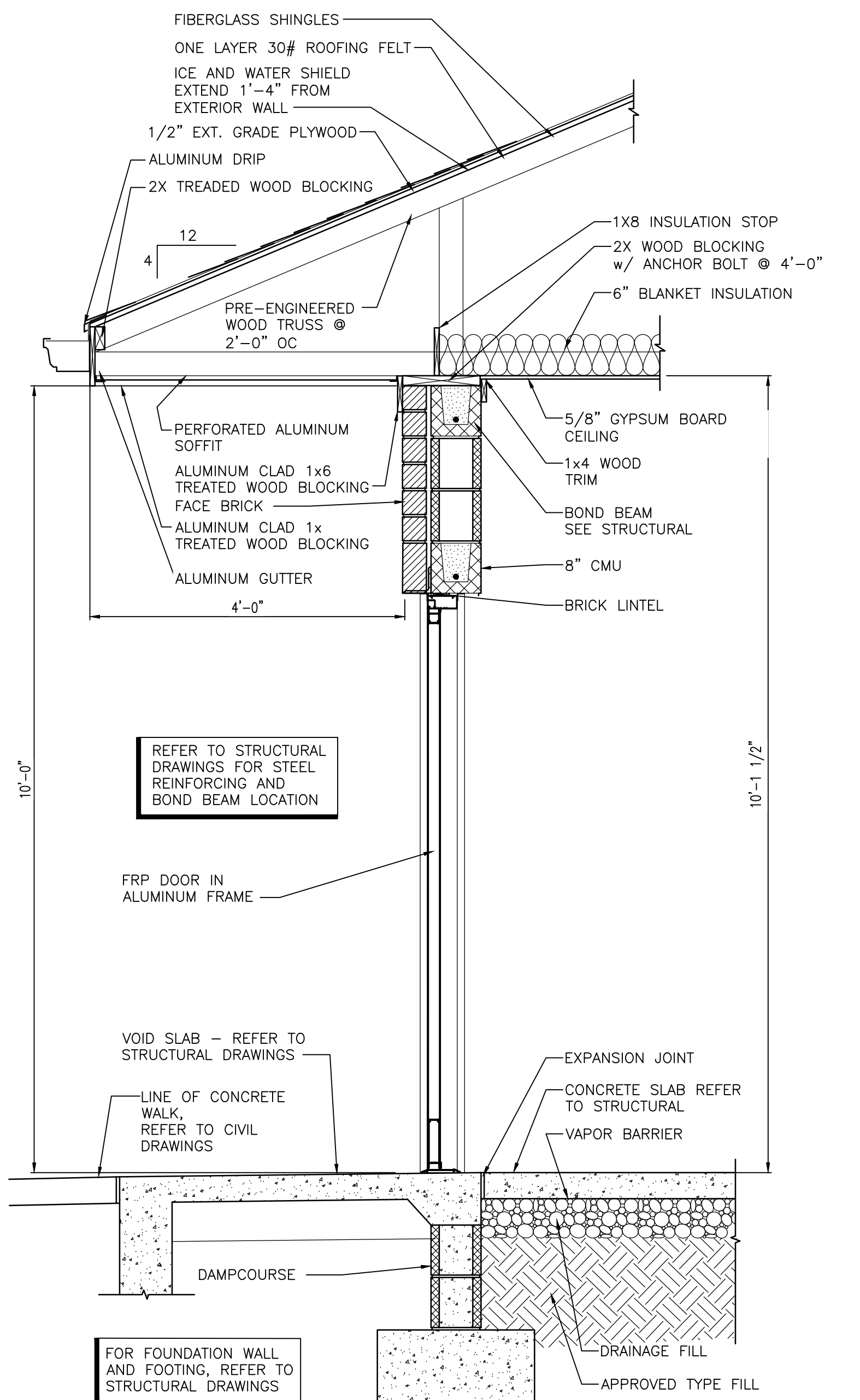
ELEVATION

CABINET: PL1
COUNTERTOP: SS1
SCALE: 1/4"=1'-0"
ROOM: A-107



ELEVATION

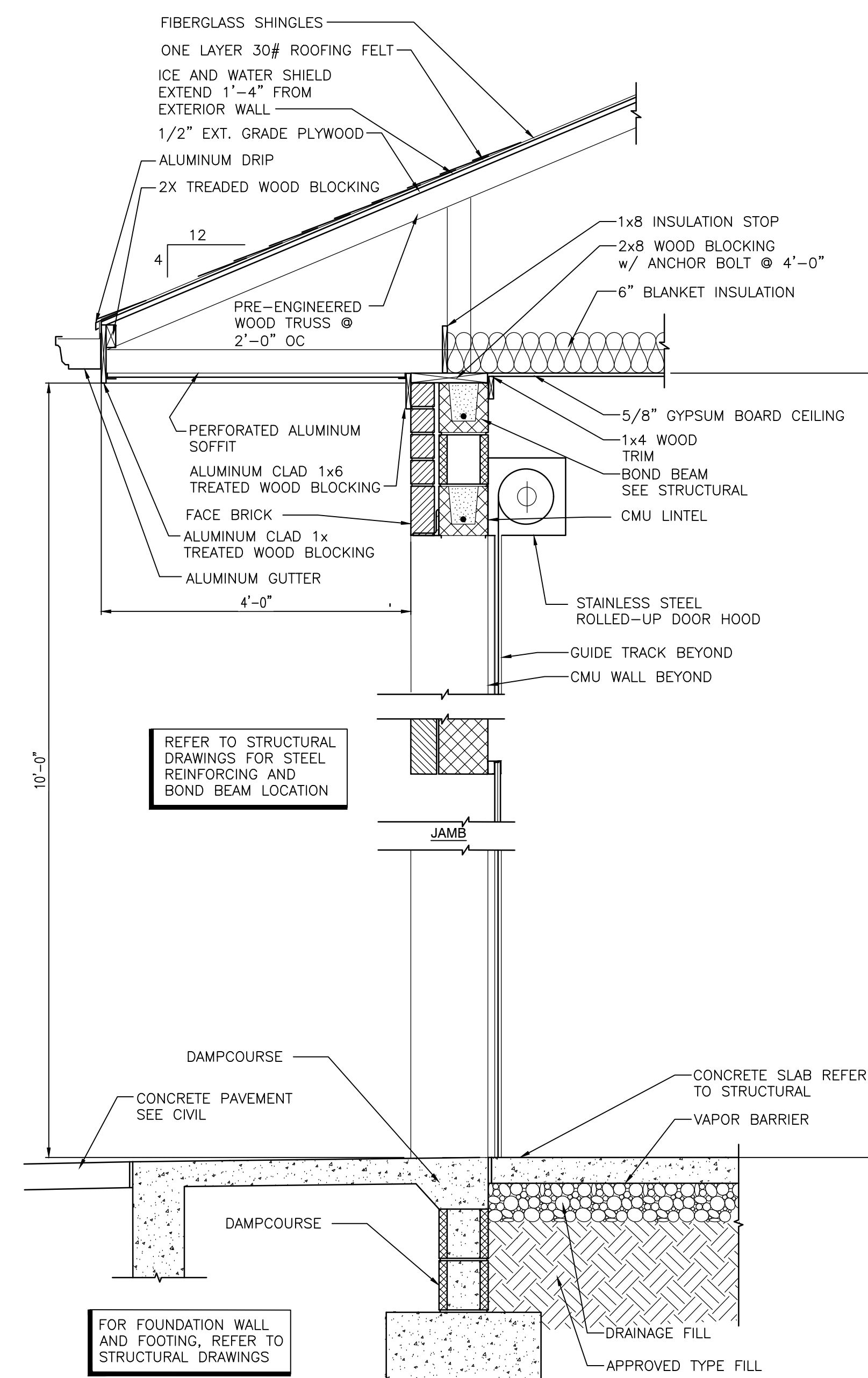
CABINETS: PL1
COUNTERTOP: SS1
SCALE: 1/4"=1'-0"
ROOM: A-107



WALL SECTION

SCALE: 3/4" = 1'-0"

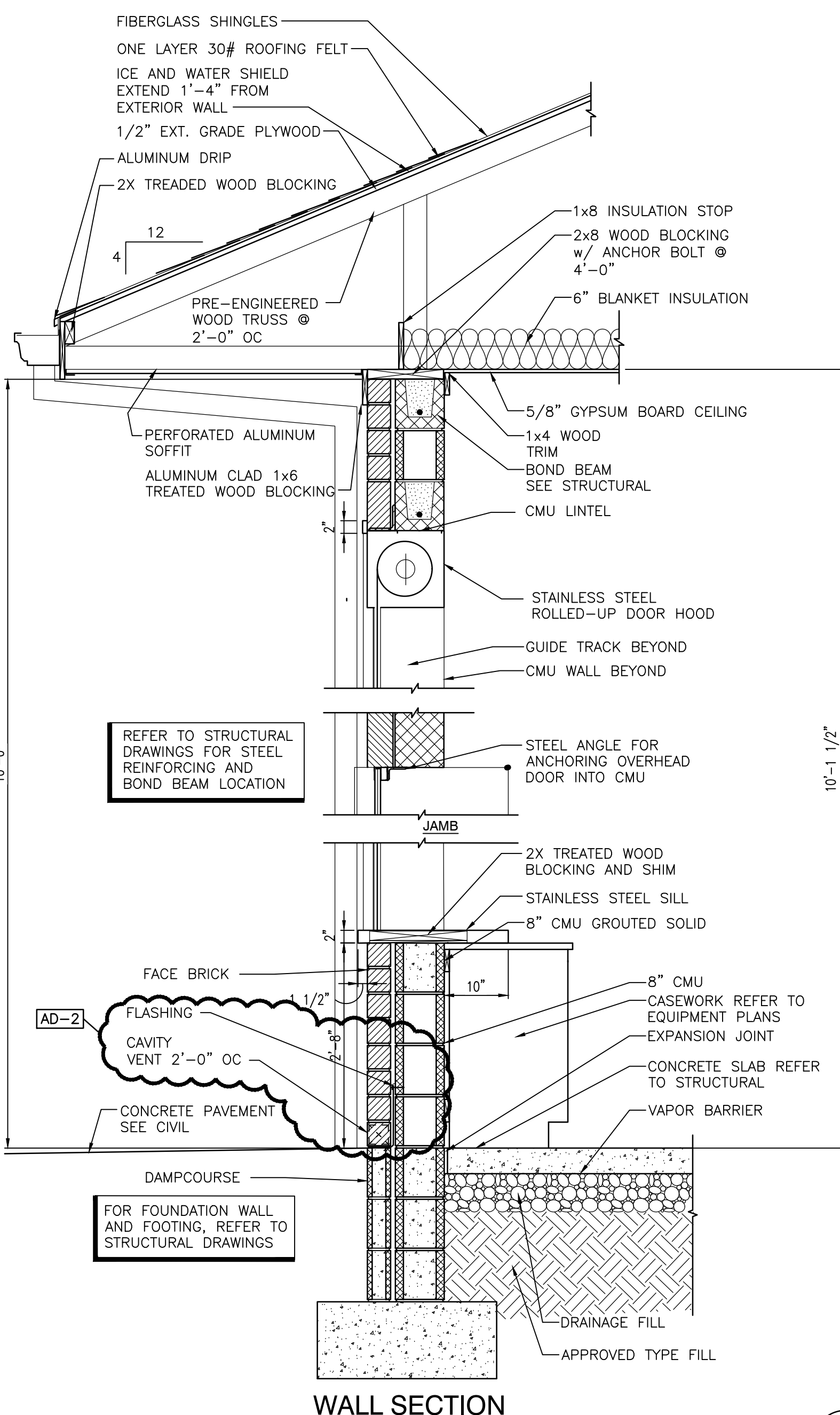
4
A-401



WALL SECTION

SCALE: 3/4" = 1'-0"

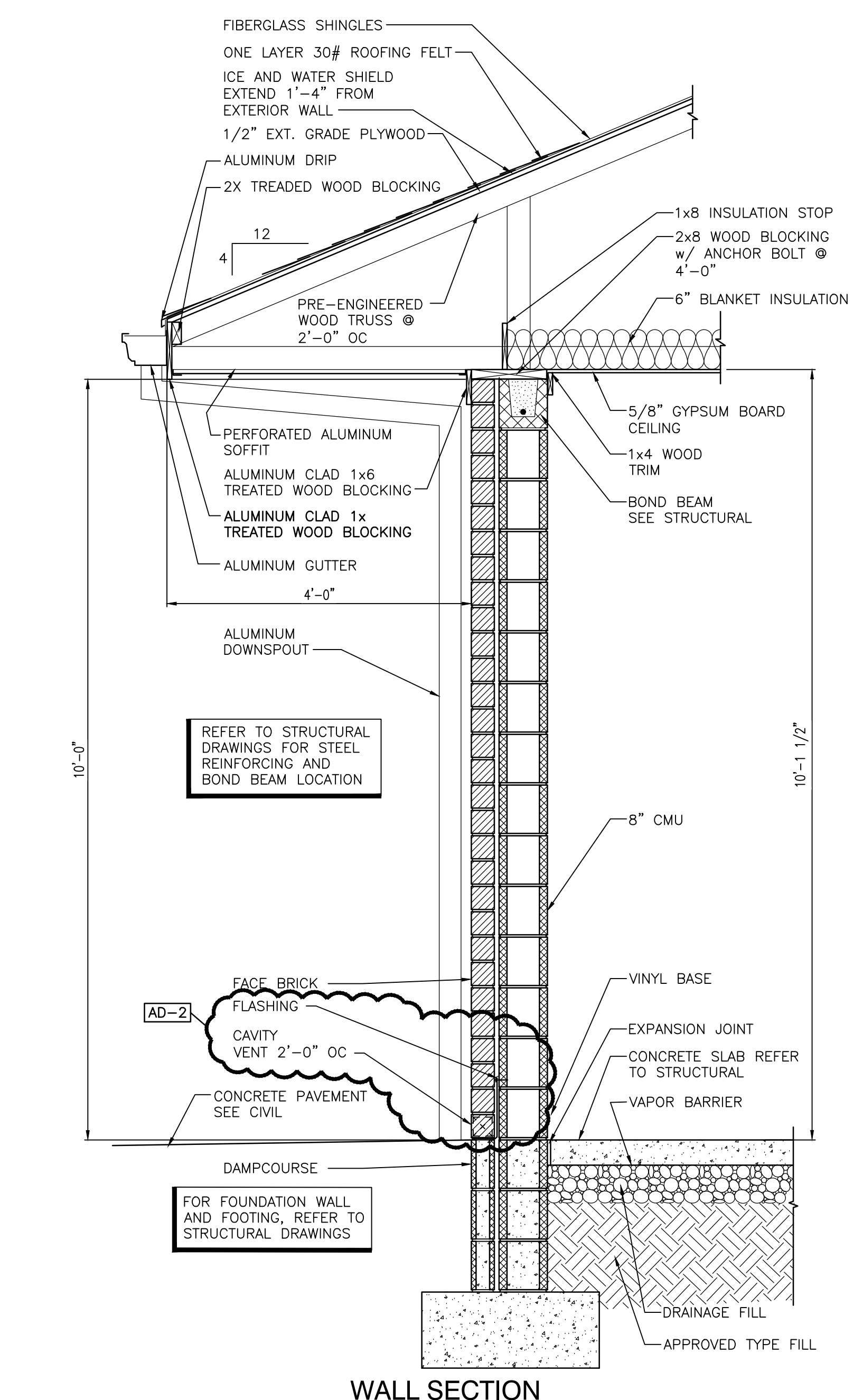
2
A-401



WALL SECTION

SCALE: 3/4" = 1'-0"

3
A-401



WALL SECTION

SCALE: 3/4" = 1'-0"

1
A-401

GIBRALTAR DESIGN

9102 N. Meridian St., Ste. 300
Indianapolis, IN 46260
Homepage: www.GibraltarDesign.com
Email: info@GibraltarDesign.com
Phone: 317.580.5777 Fax: 317.580.5778

PROJECT: 21-107
DATE: 07/19/22
COORDINATED BY: DTB
DRAWN BY: DTB EKM
CHECKED BY: DTB JPB

COPYRIGHT NOTICE:
THE CONCEPTS, DESIGNS, PLANS, DETAILS, ETC. SHOWN ON THIS DOCUMENT ARE THE PROPERTY OF GIBRALTAR DESIGN AND ARE NOT TO BE REPRODUCED OR TRANSMITTED IN ANY FORM OR BY ANY MEANS, ELECTRONIC OR MECHANICAL, INCLUDING PHOTOCOPYING, RECORDING, OR BY ANY INFORMATION STORAGE AND RETRIEVAL SYSTEM, WITHOUT THE EXPRESS WRITTEN CONSENT OF GIBRALTAR DESIGN. THE OWNER MAY RETAIN COPIES FOR INFORMATION AND REFERENCE IN CONNECTION ONLY WITH THIS PROJECT.

MARK	DATE	ISSUED FOR
AD-2	08/12/22	ADDENDUM NO. 2

DRAWING COMMUNITY BUILDING ARCHITECTURAL PLANS

PROJECT
CROWN POINT NEW TAFT MIDDLE
SCHOOL - ATHLETIC SITE
IMPROVEMENTS AND RELATED WORK

GIBRALTAR DESIGN SHEET
A-401

Friday, 8/12/2022 - 10:19 AM - LAST SAVED BY: BUBBURNS
Y:\21-107 CROWN POINT CSC - NEW MIDDLE SCHOOL\21-107 DRAWINGS - SITE\PLANTIN - FOOTBALL COMMUNITY BUILDING.DWG