

ADDENDUM NO. 5

March 28, 2023

Warren Central High School Addition and Renovation - Phase 3
9500 E. 16th Street
Indianapolis, IN 46229

TO: ALL BIDDERS OF RECORD

This Addendum forms a part of and modifies the Bidding Requirements, Contract Forms, Contract Conditions, the Specifications and the Drawings dated March 27, 2023, by CSO Architects. Acknowledge receipt of the Addendum in the space provided on the Bid Form. Failure to do so may subject the Bidder to disqualification.

This Addendum consists of Page ADD 5-1, and attached CSO Architects Addendum No. 5, dated March 27, 2023, consisting of seven (7) Pages and Addendum 5 Supplemental Drawing: ADD-5-SD 1.

A. SPECIFICATION SECTION 01 12 00 - MULTIPLE CONTRACT SUMMARY

Paragraph 3.03 Bid Categories

F. Bid Category No. 5 – Aluminum Windows and Entrances

Add the following Clarifications:

4. The Bid Category No. 5 Contractor shall be responsible for provision and installation of any clips, metal angles, or other attachment devices required to connect the curtainwall/storefront system to the existing building structure, including but not limited to those indicated in section 9/A405. Any fasteners, connections or blocking required by the curtainwall/storefront system manufacturer not indicated in the architectural details shall be provided by Bid Category No. 5.

ADDENDUM

ADDENDUM NO: 5

BID PACKAGE NO: ALL

PROJECT: Warren Central High School – Phase 3 Renovation & Addition

PROJECT NO: 2021056

DATE: March 27, 2023

BY: Jason E. Bruce, AIA

This Addendum is issued in accordance with the provisions of "The General Conditions of the Contract for Construction," Article 1, "Contract Documents" and becomes a part of the Contract Documents as provided therein. This Addendum includes:

Addendum Pages: ADD5-1 through ADD5-7
Attached Documents: Supplemental Drawing ADD5 – SD1
Attached Drawing Sheets:

PART 0 - GENERAL INFORMATION

- A. Refer to Addendum #5 information provided by The Skillman Corporation attached to this Addendum.
- B. Clarification: Existing bulkheads are not indicated with a specific type/annotation. New bulkheads which continue an existing bulkhead are intended to have the same appearance as the existing and are marked with the intended construction.
- C. Clarification: Corner Guards shall be provided as indicated on Sheet A800, General Note 11.

PART 1 - BIDDING REQUIREMENTS

- A. Refer to Addendum #5 information provided by The Skillman Corporation attached to this Addendum.

PART 2 - SPECIFICATIONS

2.1 SECTION 00 00 10 – TABLE OF CONTENTS

- A. DELETE "09 27 13 – GLASS FIBER REINFORCED FABRICATIONS"

2.2 SECTION 09 27 13 – GLASS FIBER REINFORCED FABRICATIONS

- A. DELETE section 09 27 13 in its entirety without replacement.

2.3 SECTION 09 84 00 – ACOUSTIC ROOM COMPONENTS

- A. ADD the following paragraph to Article 2.03:

“C. Mechanically fasten boards tight to metal roof deck in accordance with manufacturer’s recommendations and requirements. Fasteners shall fasten to the bottom deck rib and shall not extend beyond the top of the top rib of the 1 ½” roof deck. Fastener size, spacing, pattern, and type shall be as recommended by the board manufacturer. Include washers or other retainers to prevent boards from pulling through or sagging. Boards may be omitted where items penetrate the roof deck, or where items prevent access. For bidding purposes, assume joists are 4’-0” apart and there are no obstructions”

2.4 SECTION 08 80 00 – GLAZING

- A. At paragraph 2.12.A, delete the words “fully tempered” and change the interlayer thickness to “.060 inch”.
- B. At paragraph A.2.13.C, Change line 2 to read “One pane ¼” clear tempered Solarban 70XL #2” and ADD line 6. To read “6. Appearance shall match type G4.”

2.5 SECTION 08 91 19 – FIXED LOUVERS

- A. ADD paragraph 2.03.B as follows:

“B. Provide fixed louvers capable of being integrated into aluminum storefront and curtain wall systems at locations indicated on Drawings. Louver installation shall not interfere with the storefront or curtainwall warranties.”

2.6 SECTION 09 67 23 – RESINOUS FLOORING

- A. DELETE paragraph 2.03A in its entirety and replace with paragraphs A and B as follows:

“A. EPOXY RESINOUS FLOORING - DECORATIVE FLAKE [EPX1/EPX5]

1. Basis-of-Design Product: The design for resinous flooring systems are based on Sherwin Williams High Performance Flooring/General Polymers products listed below. The percentage of solids/flakes is listed on the drawings. Subject to compliance with requirements, provide the named product or a comparable product by listed manufacturer
 - a. Primer: 3579 applied to a dry film thickness of 10.0-12.0 mils and broadcast while wet with chosen decorative flakes (full rejection)
 - b. Intermediate/Broadcast Coat: 3746 applied at 14.0-16.0 mils and broadcast with chosen flake color (full rejection)
 - c. Grout Coat: 3746 applied at 14.0-16.0 mils to fully grout and seal the previous broadcast steps.
 - d. Orange Peel: 4686 applied to a dry film thickness 3.0-5.0 mils.

- e. Finish: 4686 Hardtop applied to a dry film thickness 3.0-5.0 mils.
 - 1) Non-Skid Additive (EPX5): System Manufacturer's product similar to a rounded bead in 90 grit applied as approved in the required mock up in paragraph 1.03.E and approved by the Architect and Owner prior to application.
- 2. Chemical Resistance: As indicated by system designation and components indicated above.
- 3. Scheduled Transition Strips – Anodized Aluminum:
 - a. Schluter Schiene
- 4. Base: 4-inch- high integral cove base where indicated on drawings.
- B. EPOXY RESINOUS FLOORING - SOLID COLOR, ROLLING LOAD, CHEMICAL RESISTANCE [EPX2/EPX3/EPX4]
 - 1. Basis-of-Design Product: The design for resinous flooring systems are based on Sherwin Williams High Performance Flooring/General Polymers products listed below. Subject to compliance with requirements, provide the named product or a comparable product by listed manufacturer
 - a. Prep: Resuprime 3504 applied to a dry film thickness of 4.0 mils
 - b. Primer: 3579 applied to a dry film thickness of 14.0-16.0 mils
 - c. Base: 3746 applied to a dry film thickness of 16.0 mils w/ broadcast of 80/120 mesh dry silica sand for total of ~60.0 mils dry film thickness (contractor to provide samples for both color & texture approval)
 - d. Grout: 3746 applied to a dry film thickness of 10.-12.0 mils
 - e. Top Coat: 4638 applied to a dry film thickness of 4.0 mils
 - 2. Chemical Resistance:
 - a. Butyl acetate
 - b. Methyl acetate
 - c. N-butyl acetate
 - d. Acetone
 - e. 4-chloro-a,a,a-trifluorotoluene
 - f. Xylene
 - g. Ethylbenzene
 - h. Hydroxyphenyl benzotriaxol derivative
 - i. 2-butoxyethyl acetate
 - j. Heptan-2-one
 - k. Hydrocarbons, C9
 - l. 2-methoxypropyl acetate
 - m. Hexamethylene diisocyanate, oligomers
 - n. Toluene
 - 3. Scheduled Transition Strips – Anodized Aluminum:
 - a. Schluter Schiene
 - 4. Base: 4-inch- high integral cove base where indicated on drawings."

B. ADD line 3.01.B.5.a as follows:

"a. Notify architect if shot blasting does not keep oil in concrete from resurfacing, especially in automotive areas (additional primer may need to be added to system in those spaces)."

2.7 SECTION 10 11 00 – VISUAL DISPLAY UNITS

A. ADD Paragraph 2.02.B as follows:

"B. Horizontal Sliding Units

1. Similar to Series 1, two-track and fixed back panel.
2. All panels white, LCS porcelain enamel steel markerboard.
3. Sizes: As indicated on Drawings.
4. Top-Mounted ball bearing rollers with nylon bottom guides.
5. Extruded aluminum frame/trim with clear anodized finish.
6. Cork map rail across entire width at frame head
7. Continuous chalktrough to match fixed boards.
8. Sliding Panels: porcelain enamel steel face sheet, 1/2" honeycomb core, and steel backing with reinforced corners.
9. Fixed Back Panel: porcelain enamel steel face sheet, 7/16" MDF core, and moisture barrier back."

PART 3 - DRAWINGS

3.1 SHEETS A211F THRU A212U – REFLECTED CEILING PLANS – ALL UNITS

A. ADD Ceiling Type "C8" as follows:

"C8 – MINERAL WOOL BOARD INSULATION – PROVIDE 4'-0" WIDE ROWS BETWEEN JOISTS ENTIRE NORTH-SOUTH LENGTH OF ROOM."

3.2 SHEET A211J – FIRST FLOOR REFLECTED CEILING PLAN – UNIT J

- A. ADD Ceiling type C8 to Computer Networking W336
- B. CHANGE ceiling types to C6/C8 in Construction W338, Mfr. Transp. W341, and Criminal Justice W342.

3.3 SHEET A211K – FIRST FLOOR REFLECTED CEILING PLAN – UNIT K

- A. CHANGE ceiling types to C6/C8 in Adv. Mfr./Logistics W343, Welding W344, and Robotics W345.

3.4 SHEET A211L – FIRST FLOOR REFLECTED CEILING PLAN – UNIT L

- A. CHANGE ceiling types to C6/C8 in Auto Collision W346, Auto Service W347, and Engineering & Tech Lab W348.

3.5 SHEET AD201L – FIRST FLOOR DEMOLITION PLAN – UNIT L

- A. REVISE demo notes as indicated on attached, re-issued Sheet AD201L.

3.6 SHEET A403 – WALL SECTIONS AND DETAILS

- A. At Wall Sections 3/A403 and 4/A403, ADD Detail Annotation as indicated on attached supplemental drawing ADD5 – SD1.

3.7 SHEET A405 – WALL SECTIONS AND DETAILS

- A. ADD detail section 9/A405 as indicated on attached supplemental drawing ADD5 – SD1.

3.8 SHEETS A501 AND A502 – DOOR AND FRAME SCHEDULE

- A. ADD the following sentence to the end of Door Schedule Remark #17:
 “REFER TO SPECIFICATION 02 01 00 FOR ADDITIONAL INFORMATION.”
- B. ADD Door Schedule Remark #17 to the following openings:
- C. W334, W000K-4, W000K-5, W336-2, W338-2, W341-2, WW342-2, W000L-1, W343-2, W344-2, W345-2, W345-3, W346-2, W346-4, W346B-2, W347-2, W347-5, and W348-2,

3.9 SHEET A501 THRU A504 – DOOR AND FRAME SCHEDULE

- A. CHANGE thickness of glass type G2 to 5/16”.
- B. DELETE glass type G13 in its entirety and replace with the following:
 “G13 1” Thick, Low E, Insulated Unit with one pane ¼” clear tempered Solarban 70XL #2, ½” air space, and one layer, laminated glass (1/8” HS, .060 interlayer, 1/8” HS). Appearance shall match type G4.”

3.10 SHEET A504 – DOOR & FRAME SCHEDULE

- A. CHANGE window elevation W2 glazing types marked G9 to “G10”. CHANGE the reference to G8 in the louver note to read “G4”.
- B. CHANGE window elevation W3 glazing types marked G9 to “G10”. CHANGE window elevation W3 glazing types marked G8 to “G4”.
- C. CHANGE window elevation W4 glazing types marked G9 to “G10”. CHANGE window elevation W4 glazing types marked G8 to “G4”.
- D. CHANGE window elevation W5 glazing types marked G9 to “G4”.

3.11 SHEET A800 FINISH LEGEND AND NOTES

- A. ADD the following sentence to the end of General Finish Note #11:
- “Corner Guards shall be omitted at individual Offices and Classrooms.”

3.12 SHEET A900B – EQUIPMENT & CASEWORK SCHEDULE

- A. ADD “HDS” to the Equipment Schedule with the following parameters:
- HDS; Mobile Storage Shelving; 10 56 26; Spacesaver Corp.; -; 11’-4”x10’-9”; See Plan For Interior Dimensions; Contractor; Contractor
- B. ADD the following sizes to MB1 thru MB5:
- | | |
|-----|------------------|
| MB1 | 4’-0”W x 4’-0”H |
| MB2 | 6’-0”W x 4’-0”H |
| MB3 | 8’-0”W x 4’-0”H |
| MB4 | 10’-0”W x 4’-0”H |
| MB5 | 12’-0”W x 4’-0”H |
- C. REVISE the Manufacture of MB6 to Claridge, the Model to LCS Elite, and ADD “Mounting – Invisi-Mount” to the Comments.
- D. REPLACE MB7, MB8, MB9, and MB10 with the following parameters:
- MB7; 2 Track Horizontal Sliding Marker Board; 10 11 00; Claridge; Series 1; 4’-0”H x 8’-0”W Back Panel; Mount Top @ 7’-0” AFF, (2) 4’W Sliding Sections; Contractor; Contractor
- MB8; 2 Track Horizontal Sliding Marker Board; 10 11 00; Claridge; Series 1; 4’-0”H x 12’-0”W Back Panel; Mount Top @ 7’-0” AFF, (2) 6’W Sliding Sections; Contractor; Contractor
- MB9; 2 Track Horizontal Sliding Marker Board; 10 11 00; Claridge; Series 1; 4’-0”H x 18’-0”W Back Panel; Mount Top @ 7’-0” AFF, (2) 9’W Sliding Sections; Contractor; Contractor
- MB10; 2 Track Horizontal Sliding Marker Board; 10 11 00; Claridge; Series 1; 4’-0”H x 10’-0”W Back Panel; Mount Top @ 7’-0” AFF, (2) 5’W Sliding Sections; Contractor; Contractor

3.13 SHEET A904 CASEWORK ELEVATIONS

- A. At elevations 2, 22, 23, 24, 25, 26, 27, 28, 33, 36, 39, 42, and 43, CHANGE the counter top from plastic laminate to solid surface. Match indicated depth and splashes.

3.14 SHEET A905 – CASEWORK ELEVATIONS

- A. At elevation 21/A905, ADD the following note to the top of the casework:
- “2 1/8” tall painted, wood trim”

- B. At elevations 7, 16, 17, 18, 19, 20, 21, and 46, CHANGE the counter top from plastic laminate to solid surface. Match indicated depth and splashes.

3.15 SHEET A906 – CASEWORK ELEVATIONS

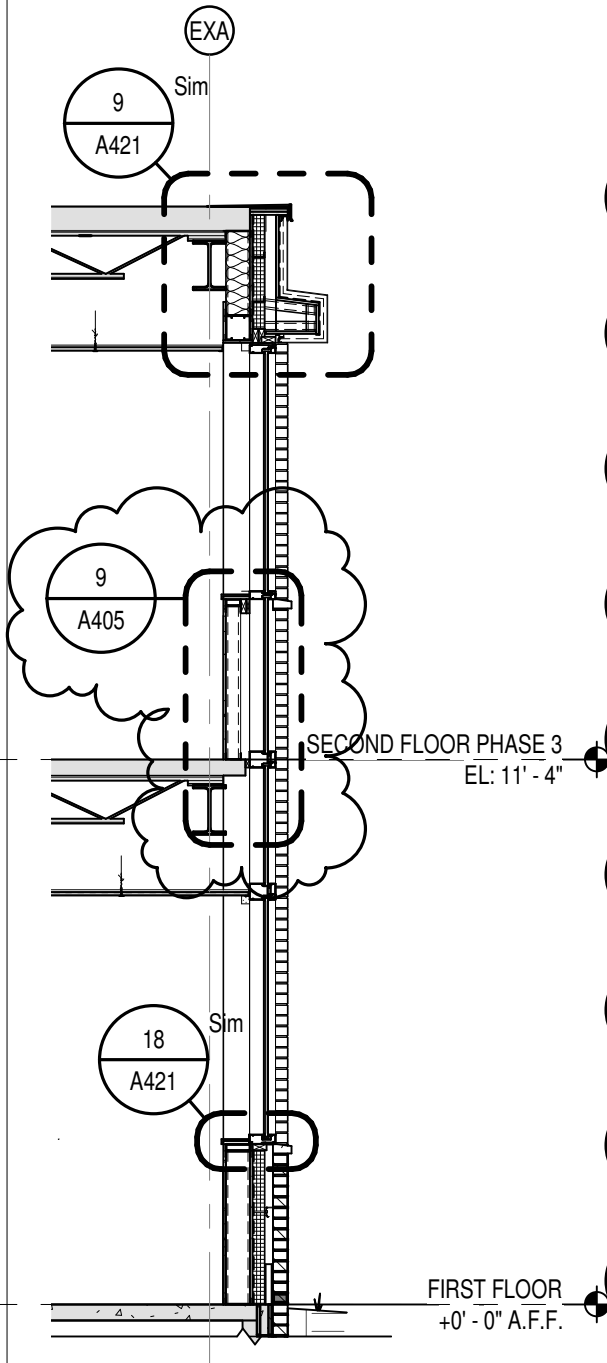
- A. At elevations 2, 6, 7, 9, 10, 12, 15, 17, 18, 19, 20, 21, AND 22, CHANGE the counter top from plastic laminate to solid surface. Match indicated depth and splashes.

PART 4 - ATTACHED ADDENDA

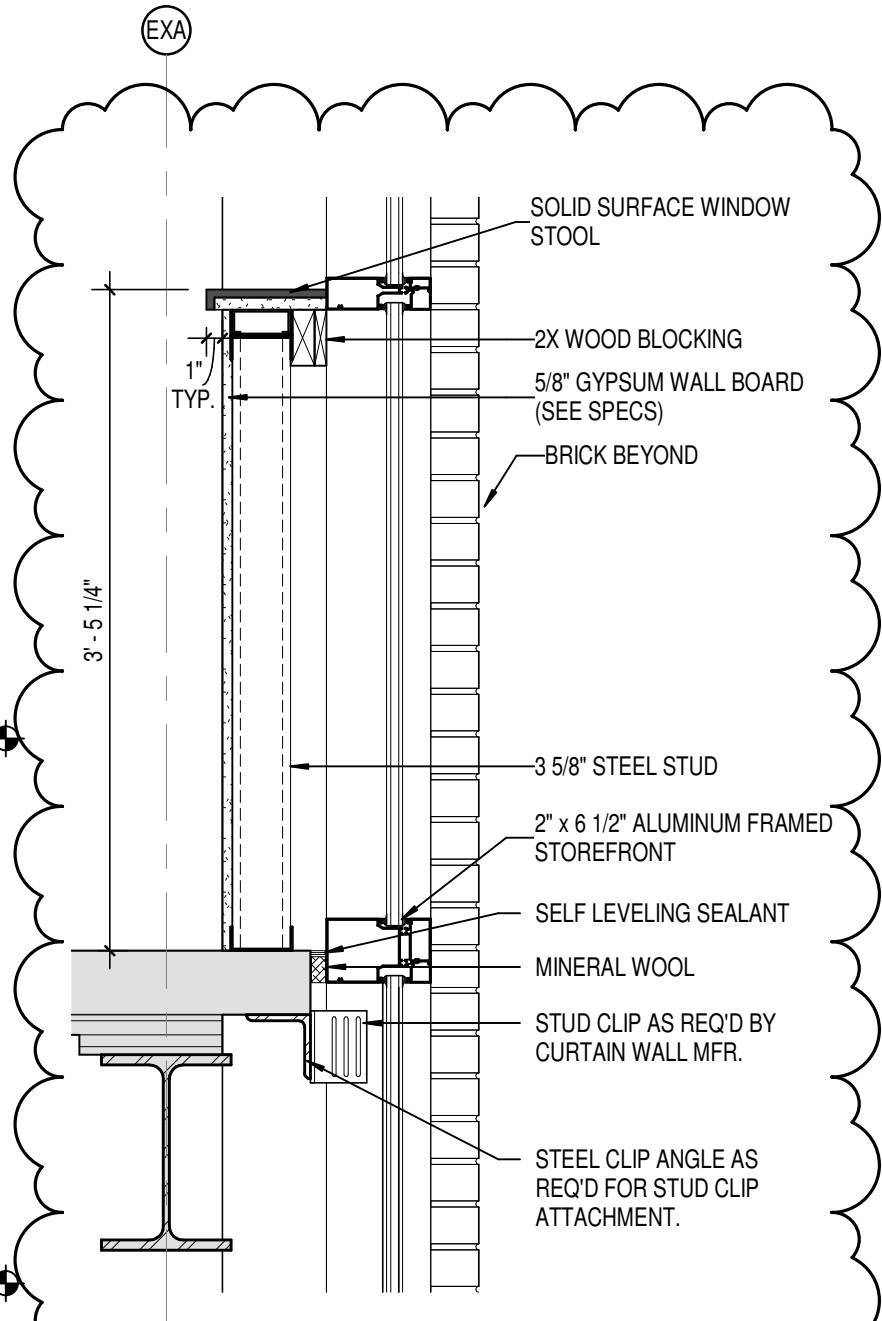
- A. NOT USED

END ADDENDUM #5

SUPPLEMENTAL DRAWING

WALL SECTIONS
3/A403 & 4/A403

SCALE: 1/4" = 1'-0"

SECTION DETAIL
9/A405

SCALE: 1" = 1'-0"