

**ADDENDUM
NO. 05**

August 19, 2024

Renovation of Fall Creek Intermediate School
12011 Olio Road
Fishers, IN 46038

TO: ALL BIDDERS OF RECORD

This Addendum forms a part of and modifies the Bidding Requirements, Contract Forms, Contract Conditions, the Specifications and the Drawings dated July 12, 2024, by krM Architecture. Acknowledge receipt of the Addendum in the space provided on the Bid Form. Failure to do so may subject the Bidder to disqualification.

This Addendum consists of Pages ADD 5-1 through ADD 5-1 and attached krM Architecture Addendum No. 5 dated August 19, 2024, consisting of one page of MEP narrative, and issuance of 3 drawings.



Addendum #5
Hamilton Southeastern School Corporation
Fall Creek Intermediate Renovations

Date: August 19, 2024
Project: FCI – Renovations
Project #: 23055
Pages: 1 of 1
Bid Dates: **August 22, 2024**

General Note:

The original Specifications and Drawings dated August 19th, 2024 for the project referenced above are amended as noted in this Addendum No. 5. Receipt of this Addendum and any subsequent Addenda must be acknowledged on the Bid Form. Items changed or added by this addendum are to take precedence over the items or descriptions of the work in the project manual and the drawings. Items not mentioned in this addendum are to remain as described in the original plans and specifications.

Specifications Items:

Drawing Set Items:

M4-3 – ENLARGED MECHANICAL PLANS

1. Revised Chilled water piping size from 6” to 8”

M4-4 – ENLARGED MECHANICAL PLANS

2. Revised Chilled water piping size from 6” to 8”

M6-1 – MECHANICAL SCHEDULES

3. Revised Air-Dir Separator schedule.
 - a. ADS-2 model changed to VDT1000FA

Attachments:

1. M4-3 – ENLARGED MECHANICAL PLANS
2. M4-4 – ENLARGED MECHANICAL PLANS
3. M6-1 – MECHANICAL SCHEDULES

END

GENERAL NOTES

- A REFER TO SHEET M-100 FOR GENERAL MECHANICAL NOTES, SYMBOLS AND ABBREVIATIONS.
- B REFER TO DRAWING M-500 SERIES FOR MECHANICAL DETAILS.
- C REFER TO DRAWING M-600 SERIES FOR MECHANICAL SCHEDULES.

SHEET KEYNOTES

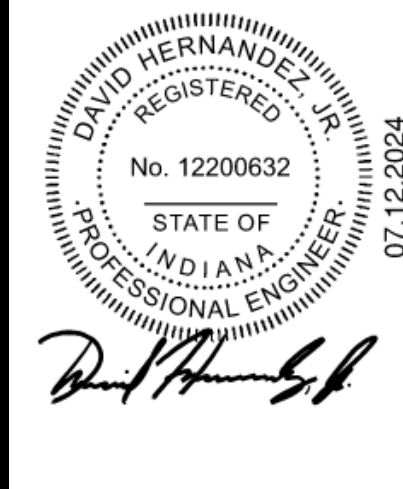
- 1 EXTEND EXISTING 4" CONCRETE PAD AS REQUIRED TO ACCOMMODATE NEW CHILLER.
- 2 EXTEND EXISTING 4" CONCRETE PAD AS REQUIRED TO ACCOMMODATE NEW PUMPS.
- 3 EXTEND EXISTING 4" CONCRETE PAD AS REQUIRED TO ACCOMMODATE NEW AIR HANDLING UNIT.
- 4 NEW 4" CONCRETE HOUSE KEEPING PAD FOR BOILER.
- 5 ALL NEW EQUIPMENT IN THIS ROOM MUST BE BROUGHT INTO BUILDING THROUGH DOUBLE DOORS IN COOLING TOWER YARD OR ADJACENT CORRIDOR.
- 6 AIR HANDLING UNIT MUST BE BROUGHT THROUGH OUTSIDE AIR LOUVER IN SECTIONS.
- 7 PROVIDE AND INSTALL NEW REFRIGERANT MONITORING SYSTEM SIMILAR TO ACS MER/INTEGRATED CONTROLLER AGSRTFT SERIES MONITOR, AGSAA8 ALARM, AND BMS TIE-IN FOR PRE-ALARM AND HIGH-ALARM RELAYS.
- 8 COOLING TOWER CONTROL PANEL SHALL BE LOCATED INSIDE MECHANICAL ROOM.
- 9 12" DIAMETER INTAKE FOR BOILER UP THROUGH ROOF. CONFIRM SIZE REQUIRED WITH BOILER MANUFACTURER. TERMINATE WITH MANUFACTURER APPROVED INTAKE TERMINATION KIT.
- 10 12" DIAMETER DOUBLE WALL STAINLESS STEEL FLUE FOR BOILER UP THROUGH ROOF. CONFIRM SIZE REQUIRED WITH BOILER MANUFACTURER. TERMINATE WITH MANUFACTURER APPROVED TERMINATION KIT.
- 11 LAKOS SOLIDS RECOVERY VESSEL, MODEL SRV-816.
- 12 PIPING TO AHU ON MEZZANINE.
- 13 COOLING TOWER BYPASS VALVE.
- 14 COOLING TOWER CHEMICAL INJECTION STORAGE TANKS.
- 15 PATCH EXISTING HOLES THROUGH ROOF FROM REMOVAL OF BOILER W/ WESFLUES TO MATCH CURRENT ROOF STRUCTURE.
- 16 NEW FIRE DAMPER IN DUCTWORK.
- 17 WATER FILTER MOUNTED ON FLOOR FOR CHILLED AND HEATING WATER SYSTEMS. CHILLED WATER SYSTEM FILTER LIKE HARRISCO HURRICANE FILTER MODEL HC175-50 WITH 50 MICRON, MIN. TO 50 FT. PLATED MEDIA FILTER. MAX 6.0 PSI P.D. FLOW THRU FILTER TO BE 154 GPM. HEATING WATER SYSTEM FILTER LIKE HARRISCO HURRICANE FILTER MODEL HC90-50 WITH 50 MICRON, MIN. TO 30 FT. PLATED MEDIA FILTER. MAX 6.0 PSI P.D. FLOW THRU FILTER TO BE 88 GPM.
- 18 2" SOFT COLD WATER MAKE-UP FOR COOLING TOWERS. SEE PLUMBING DRAWINGS FOR PIPING CONTINUATION.
- 19 CLEAN AND EPOXY PAINT CONDENSER WATER SUMP PIT. PIT IS APPROXIMATELY 11'-0" L x 10'-0" W x 11'-0" D.
- 20 NEW LOCATION OF 4" SUMP VENT. TERMINATE OUTSIDE WITH ELBOW DOWN AND WIRE MESH SCREEN.
- 21 ROUTE NEW OVERFLOW DRAIN DOWN IN PIT WHERE OLD VENT PIPE WAS LOCATED. EXPAND EXISTING HOLE IN PIT LID AS REQUIRED FOR LARGER PIPE.
- 22 ROUTE NEW CONDENSER WATER PIPE DOWN IN PIT AS REQUIRED.
- 23 1" SOFT COLD WATER MAKE-UP. SEE PLUMBING DRAWINGS FOR PIPING CONTINUATION.
- 24 3" PVC WATER HEATER FLUE AND INTAKE UP THROUGH ROOF. VERIFY ALL FLUE AND INTAKE REQUIREMENTS WITH WATER HEATER MANUFACTURER. TERMINATE INTAKE WITH GOOSENECK AT 3'-0" ABOVE ROOF. TERMINATE FLUE WITH MANUFACTURER APPROVED FLUE VENT CAP AS REQUIRED.
- 25 PROVIDE AND INSTALL NEW MOTORIZED DAMPER TO BE INTERLOCKED WITH THE OPERATION OF VF-2.
- 26 EXHAUST AIR DUCT UP THROUGH ROOF TO GRAVITY HOOD.
- 27 SUPPLY AIR DUCT UP THROUGH ROOF TO GRAVITY HOOD.
- 28 RETURN AIR DUCT DOWN TO RETURN AIR PLENUM OFF BACK OF UNIT.
- 29 RETURN AIR PLENUM AS REQUIRED.
- 30 ROUTE 1-1/2" CONDENSATE DRAIN FOR FLOOR DRAIN.
- 31 ROUTE 2" CONDENSATE DRAIN LINE TO FLOOR DRAIN.
- 32 SUPPORT CONDENSER WATER PIPING FROM COOLING TOWER SUPPORT STEEL.
- 33 PROVIDE AND INSTALL NEW SUMP PIT ACCESS DOOR. DOOR SHALL BE POLYMER CORROSION RESISTANT AND WALKABLE.
- 34 FLOW METER ALLOW FOR UPSTREAM AND DOWNSTREAM STRAIGHT PIPE LENGTH REQUIRED BY FLOW METER MANUFACTURER.
- 35 BUTTERFLY VALVE, TYPICAL.
- 36 DISCHARGE ISOLATION VALVE, CHECK VALVE AND PRESSURE GAUGE ON VERTICAL TURBINE PUMP, TYPICAL.
- 37 LOW VOLTAGE CONTROLS TRANSFORMER FOR AHU-3 ONLY. THIS TRANSFORMER TO BE ON EMERGENCY POWER.
- 38 LOW VOLTAGE CONTROLS TRANSFORMER FOR AHU-4 ONLY. THIS TRANSFORMER TO BE ON EMERGENCY POWER.
- 39 LOW VOLTAGE CONTROLS TRANSFORMER FOR AHU-5 ONLY. THIS TRANSFORMER TO BE ON EMERGENCY POWER.



REVISIONS

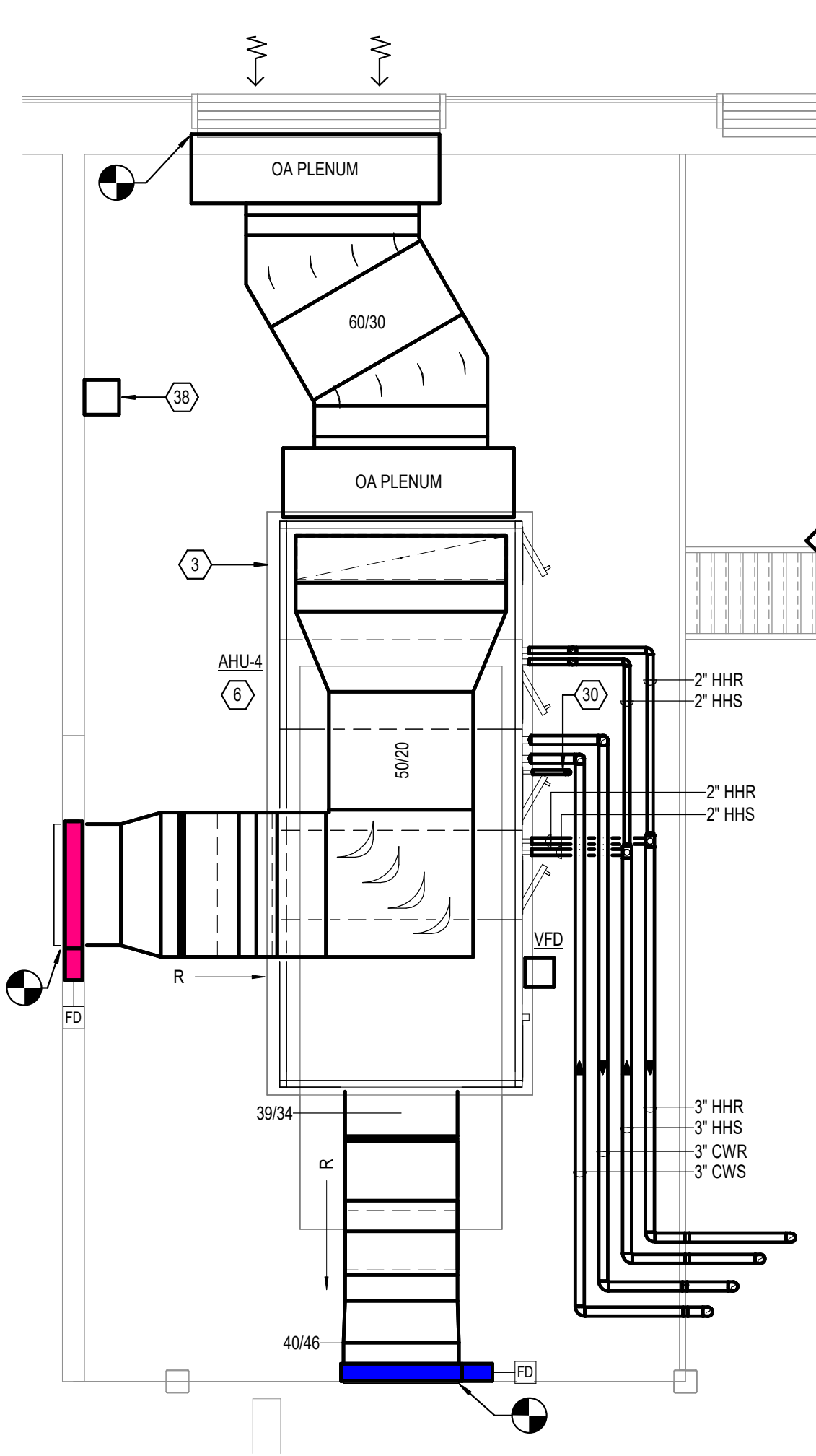
1	7/30/24	Addendum #1
2	8/19/24	Addendum #5

07.12.2024
 HAMILTON SOUTHEASTERN SCHOOL CORPORATION
23055 - FALL CREEK INTERMEDIATE RENOVATIONS
 12011 Chic Rd., Fishers, IN 46037
 CONSTRUCTION DOCUMENTS

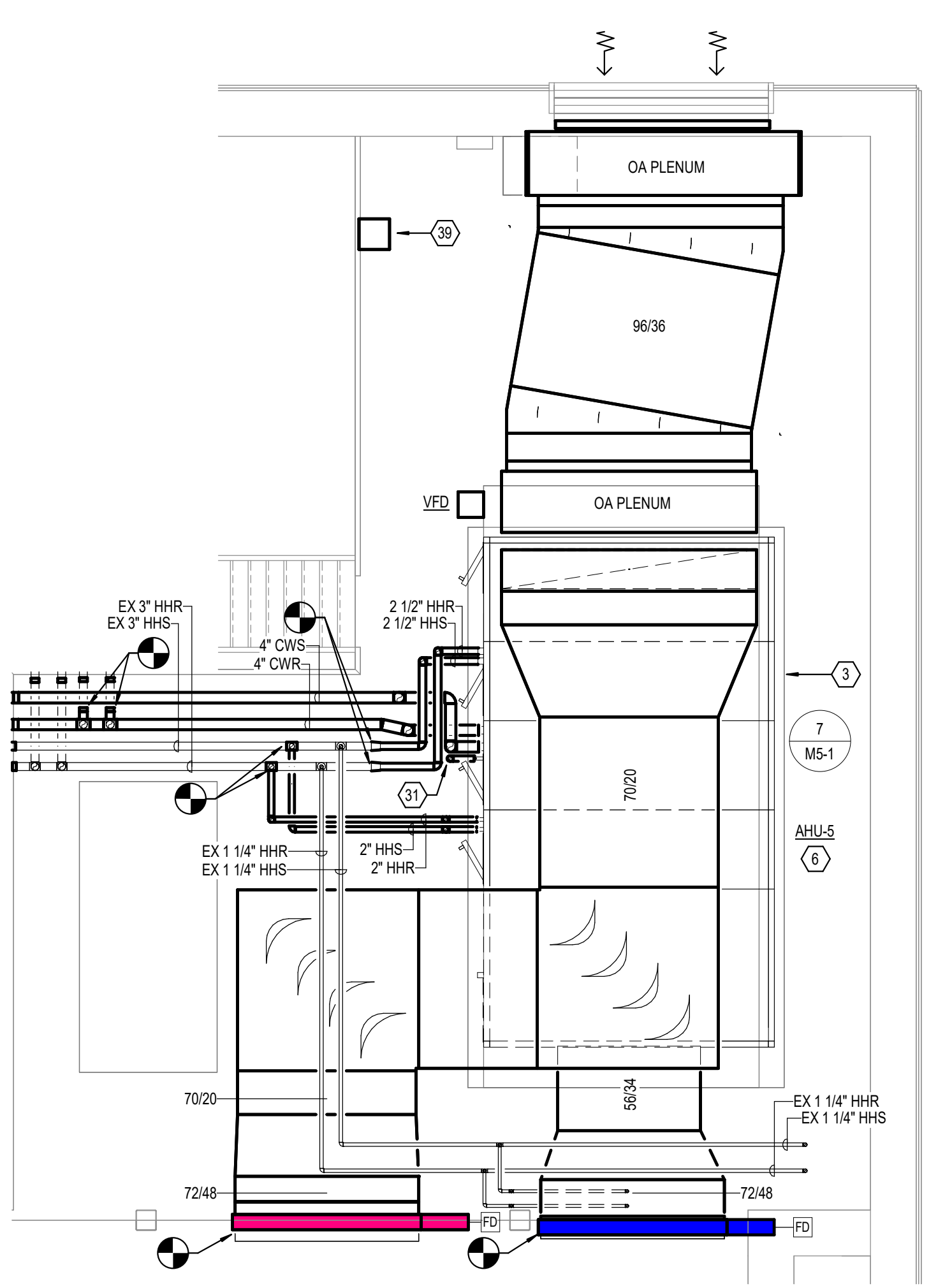


CONSTRUCTION DOCUMENTS
 07.12.2024
 W/J JOB NO. 23055
 DRAWN BY CME
ENLARGED MECHANICAL PLANS

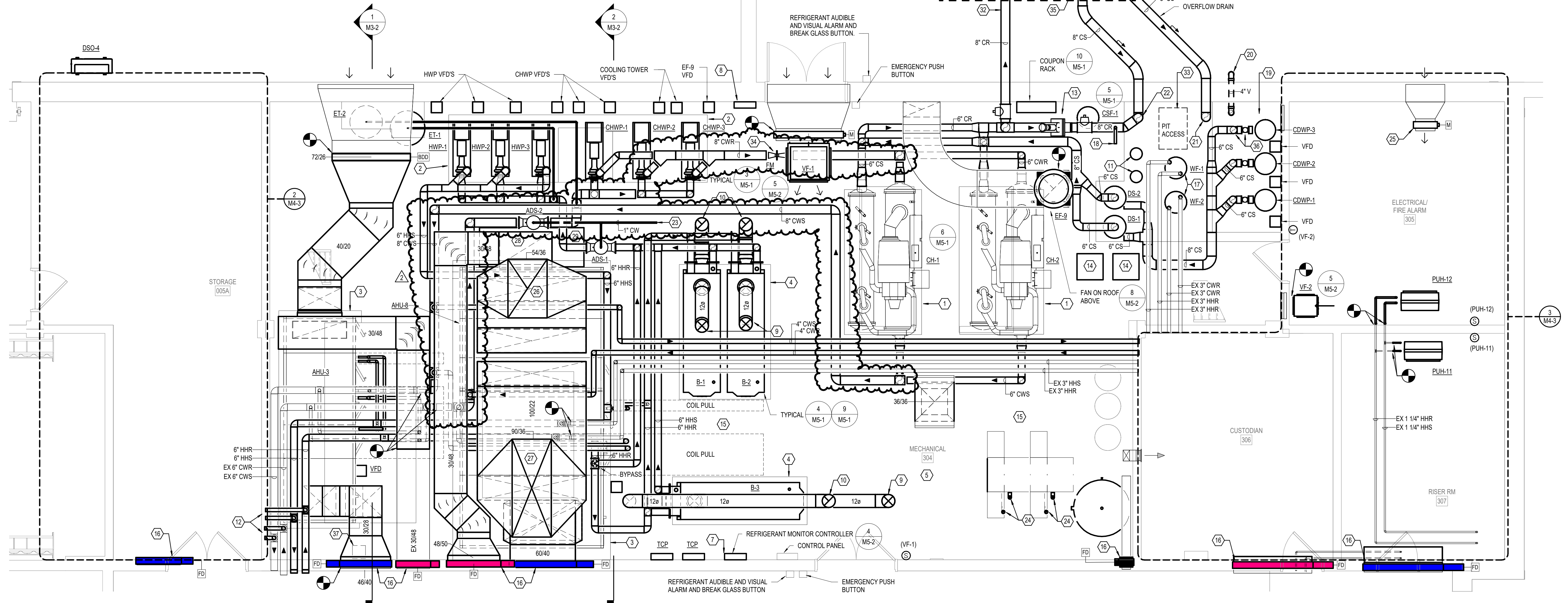
DRAWING NO.
M4-3



MECHANICAL ROOM MEZZANINE A
MECHANICAL PLAN
 1/4" = 1'-0"



MECHANICAL ROOM MEZZANINE B
MECHANICAL PLAN
 1/4" = 1'-0"



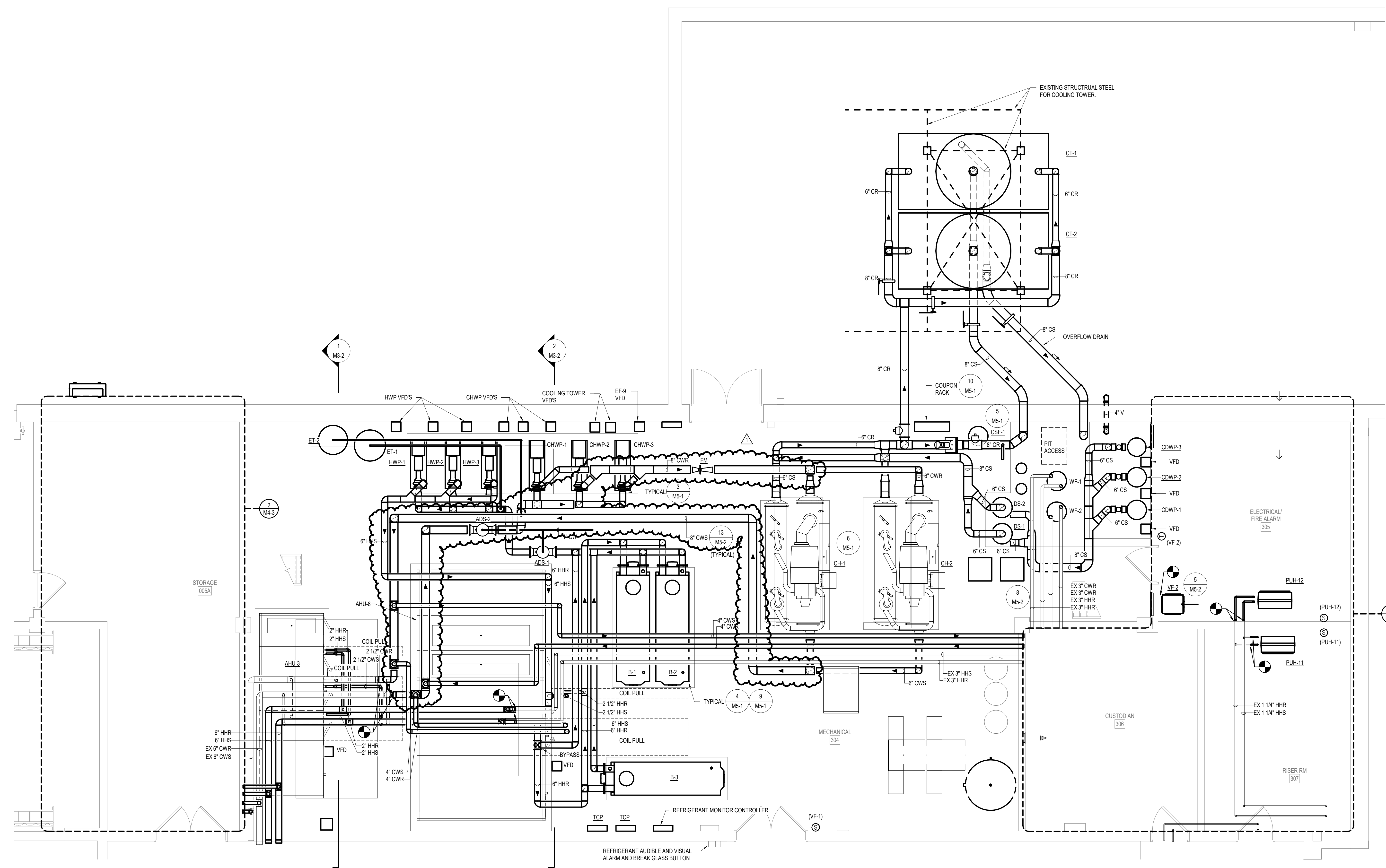
ENLARGED - MECHANICAL ROOM PLAN
 1/4" = 1'-0"

GENERAL NOTES

- A REFER TO SHEET M-100 FOR GENERAL MECHANICAL NOTES, SYMBOLS AND ABBREVIATIONS.
- B REFER TO DRAWING M-500 SERIES FOR MECHANICAL DETAILS.
- C REFER TO DRAWING M-600 SERIES FOR MECHANICAL SCHEDULES.



THIS SHEET ONLY FOR CLARITY OF PIPING IN MAIN MECHANICAL ROOM. SEE SHEET M4-3 FOR NOTES AND MORE INFORMATION.



REVISIONS

1	8/19/24	Addendum #5
---	---------	-------------

07.12.2024
 HAMILTON SOUTHEASTERN SCHOOL CORPORATION
23055 - FALL CREEK INTERMEDIATE RENOVATIONS
 12011 Chic Rd., Fishers, IN 46037
 CONSTRUCTION DOCUMENTS



CONSTRUCTION DOCUMENTS
 07.12.2024
 WJL JOB NO.
 23055
 DRAWN BY
 CME
 DRAWING NAME
ENLARGED MECHANICAL PLAN
 DRAWING NO.
M4-4

1 ENLARGED - MECHANICAL ROOM PIPING PLAN
 1/4" = 1'-0"

