

# ADDENDUM NO. 3

**September 4, 2024**

MSD of Washington Township Service Center Renovation  
8401 Westfield Blvd.  
Indianapolis, IN 46240

**TO: ALL BIDDERS OF RECORD**

This Addendum forms a part of and modifies the Bidding Requirements, Contract Forms, Contract Conditions, the Specifications and the Drawings dated July 31, 2024, by Schmidt Associates. Acknowledge receipt of the Addendum in the space provided on the Bid Form. Failure to do so may subject the Bidder to disqualification.

This Addendum consists of Pages ADD 3-1 through ADD 3-2, Pre-Award Conference Agenda, Specification Section 01 21 00 - Allowances and attached Schmidt Associates Addendum No. 3 consisting of 2 addendum pages, and 13 attachments totaling 15 pages.

**A. GENERAL INFORMATION:**

Bid Opening: Utilize the link below for the virtual bid opening.

**Microsoft Teams** [Need help?](#)

[Join the meeting now](#)

Meeting ID: 257 810 897 416

Passcode: v8QvtN

**Dial in by phone**

[+1 317-762-3960,,631598874#](#) United States, Indianapolis

[\(317\) 762-3960,,631598874#](#) United States (Toll-free)

[Find a local number](#)

Phone conference ID: 631 598 874#

Reference attached Pre-Award Conference Agenda. TEAMS link will be issued to the apparent low bidders following bid event.

B. **SPECIFICATION SECTION 01 12 00 MULTIPLE CONTRACT SUMMARY**

3.03 Bid Categories

B. **BID CATEGORY NO. 2 – GENERAL TRADES**

Add the following Specification Section:

Section        01 21 00        Allowances

C. **SPECIFICATION SECTION 01 21 00 – ALLOWANCES**

Add Specification Section 01 21 00 – Allowances

Paragraph 3.01    PRODUCT ALLOWANCE

---

# PRE-AWARD MEETING SCHEDULE

---



- Bid Category No. 2 – September 11, 2024 @ 9:00AM
- Bid Category No. 3 – September 11, 2024 @ 10:00AM
- Bid Category No. 4 – September 11, 2024 @ 1:00PM
- Bid Category No. 5 – September 11, 2024 @ 2:00PM
- Bid Category No. 6 – September 12, 2024 @ 9:00AM
- Bid Category No. 7 – September 12, 2024 @ 10:00AM
- Bid Category No. 8 – September 12, 2024 @ 1:00PM
- Bid Category No. 9 – September 12, 2024 @ 2:00PM

## **SECTION 01 21 00 – ALLOWANCES**

### **PART 1 - GENERAL**

#### **1.01 RELATED DOCUMENTS**

- A. Drawings and general provisions of the Contract, including amended General Conditions and other Division-1 Specification Sections, apply to work of this Section.

#### **1.02 REQUIREMENTS INCLUDED**

- A. The Specifications contain Allowances for particular items, methods of construction, quantities of materials, labor for certain items and these stated Allowances shall be included in the total lump sum bid price.
  - 1. Should the final amounts as determined from actual costs vary from these stated Allowances, the Contract price will be adjusted by Change Order as stated in the Conditions of the Contract.
  - 2. Under no circumstances shall work exceeding the stated Allowance amounts, proceed without a properly executed Change Order.
- B. A "Schedule of Allowances" showing amounts included in each prime Contract Sum, is included at the end of this Section.
- C. Product/Materials Allowance: At the earliest feasible date after award of Contract, advise the Architect and Construction Manager of scheduled date when final selection and purchase of each product or system described by each Allowance must be accomplished in order to avoid delays in performance of the Work.
  - 1. As requested by the Architect, obtain and submit proposals for the work of each Allowance for use in making final selection; include recommendations for selection which are relevant to the proper performance of the Work.
  - 2. Purchase products and systems as specifically selected (in writing) by the Architect.
  - 3. Submit proposals and recommendations, for purchase of products or systems of Allowances, in form specified for Change Orders.
  - 4. When requested, submit a substantiated survey of quantities of materials, as shown in the "Schedule of Values", revised where necessary, and corresponding with Change Order quantities.
  - 5. Amount of Allowance includes:
    - a. Net cost of product
    - b. Delivery to the site
    - c. Applicable taxes
  - 6. In addition to amount of Allowance, include in Bid, for inclusion in Contract Sum, Contractor's costs for:
    - a. Handling at site, including unloading, uncrating and storage
    - b. Protection from elements, from damage
    - c. Labor, installation and finishing

- d. Other expenses (e.g., testing, adjusting and balancing) required to complete installation
  - e. Overhead and profit
- D. Contingency Allowance: Contingency allowance shall be used only as directed for Owner's purposes. Proposal shall be submitted by Contractor for work requested in format similar to that required for Change Orders. Compensation to the Contractor for work requested utilizing this Allowance shall be for only Contractor's costs as defined by Paragraph 7.3.7 of the General Conditions, except no compensation shall be allowed for overhead and profit. At time of Project closeout, unused amounts remaining in contingency allowance shall be credited to Owner by Change Order.

PART 2 - PRODUCTS (Not Used)

PART 3 - EXECUTION

**3.01 PRODUCT ALLOWANCE**

A. Bid Category No. 2 – General Trades

\$20,000 – Exterior Dimensional Characters Signage

**3.02 CONTINGENCY ALLOWANCES – NOT APPLICABLE**

END OF SECTION 01 21 00

# **ADDENDUM NO. 3**

## **SEPTEMBER 3, 2024**

PREPARED BY SCHMIDT ASSOCIATES FOR:  
**M.S.D. OF WASHINGTON TOWNSHIP –  
CENTRALIZED SERVICES CENTER AND  
WAREHOUSE RENOVATION – PHASE 6B  
WASHINGTON TOWNSHIP, M.S.D. OF**

This Addendum consists of 2 Addendum page(s) and 13 attachment pages totaling 15 pages.

Acknowledge receipt of this Addendum by inserting its number on the Bid Form. Failure to do so may subject the Bid to disqualification. This Addendum is part of the Contract Documents.

Bidder is encouraged to verify with reprographer of record all Addenda issued (do not rely exclusively on third party plan room services).

### **PART 1 - CHANGES TO PRIOR ADDENDA (NOT APPLICABLE)**

### **PART 2 - CHANGES TO THE PROJECT MANUAL**

Modifications described herein shall be incorporated in the Project Manual. All other Work shall remain unchanged.

### **PART 3 - CHANGES TO THE DRAWINGS**

Modifications described herein shall be incorporated in the Drawings. All other Work shall remain unchanged.

**DRAWING SHEETS: ADDITIONS, DELETIONS AND REPLACEMENTS**

DRAWING NO.	INDICATE ACTION: ADD (A), DELETE (D), DELETE & REPLACE (R),
<b>E-SERIES DRAWINGS</b>	
EP1A1	DELETE AND REPLACE
<b>T-SERIES DRAWINGS</b>	
T201A1	DELETE AND REPLACE
T201A2	DELETE AND REPLACE
T201B1	DELETE AND REPLACE
T201C	DELETE AND REPLACE
T201D	DELETE AND REPLACE
T201E	DELETE AND REPLACE
T202A1	DELETE AND REPLACE
T202C	DELETE AND REPLACE
T304	DELETE AND REPLACE
T305	DELETE AND REPLACE
T407	DELETE AND REPLACE
T500	DELETE AND REPLACE

**3.1 A-SERIES DRAWINGS**

**A. Drawing Numbers A-100 AND AF1A1 TO AF1G1**

1. DELETE AND REPLACE General Plan Note K as follows:
  - a. "K. Refer to C-Series Drawings for base elevation height (0'-0") relative to USGS (United States Geological Survey Data)."
2. ADD General Plan Note M as follows:
  - a. "M. Top of existing floor and roof decks relative to 0'-0" are as follows (V.I.F.):
    - Level 2 Floor Deck = 10'-10".
    - Level 2 Roof Deck = 22'-4".
    - First Floor Roof Deck (True North Area) = 13'-4"."

**B. Drawing Number A-600**

1. Add the following note to the Door Schedule General Notes:  
"F. All wood door veneers to be Type B (Red Oak) unless noted otherwise."
2. Add the following note to the Door & Frame Schedule Notes:  
"6. Wood door veneer Type A (Select white maple)."
3. Add Door Schedule Note 6 to the following openings:  
F105, F110, F112.1, F112.2, G100.1, G100.2, G100A, G100B, G100C, G100D, G100E, G100F, G100G, G100H, G101, G102, G103, G104C, G105, G106.1, G106.2, G-101, and H103A.

**END OF ADDENDUM 3**





6

5

4

3

2

1

E

D

C

B

A

SHEET NOTES

- 1 SHADED AREA OUTSIDE OF CONSTRUCTION SCOPE. ALL DEVICES WITHIN REGION SHALL BE PROTECTED IN PLACE THROUGH CONSTRUCTION.
- 2 DATA LOCATION MOUNTED ADJACENT TO POWER LOCATIONS SERVING PRINTING EQUIPMENT.
- 3 DATA LOCATION SERVING GAS EQUIPMENT. COORDINATE FINAL LOCATION WITH TEMPERATURE CONTROLS CONTRACTOR.

TECHNOLOGY LEGEND

- DATA LOCATION - SURFACE MOUNTED
- DATA LOCATION - FLUSH MOUNTED
- DATA RACEWAY - SURFACE MOUNTED
- DATA RACEWAY - FLUSH MOUNTED
- DATA RE-CABLE LOCATION - SURFACE MOUNTED
- DIGITAL SIGNAGE LOCATION - FLUSH MOUNTED
- MONITOR LOCATION - FLUSH MOUNTED
- MONITOR LOCATION - SURFACE MOUNTED
- PROJECTOR LOCATION
- SHORT THROW PROJECTOR LOCATION
- TEACHER STATION LOCATION - SURFACE MOUNTED
- WALL PHONE LOCATION - FLUSH MOUNTED
- WALL PHONE LOCATION - SURFACE MOUNTED
- WIRELESS ACCESS POINT - CEILING MOUNTED
- AV INPUT LOCATION - SURFACE MOUNTED
- AV INPUT LOCATION - FLUSH MOUNTED
- AV CONTROL LOCATION - FLUSH MOUNTED
- AV CONTROL LOCATION - SURFACE MOUNTED
- AV RACK LOCATION
- BLUETOOTH RECEIVER ANTENNA LOCATION - FLUSH MOUNTED
- BLUETOOTH RECEIVER ANTENNA LOCATION - SURFACE MOUNTED
- CALL SWITCH LOCATION - SURFACE MOUNTED
- CLOCK LOCATION - SURFACE MOUNTED
- DUAL SIDED CLOCK LOCATION - SURFACE MOUNTED
- HEARING ASSISTANCE ANTENNA LOCATION
- IR MICROPHONE LOCATION
- PAGING SPEAKER - CEILING MOUNTED
- PROGRAM SPEAKER - CEILING MOUNTED
- PROGRAM SPEAKER - SURFACE MOUNTED
- TOUCH PANEL LOCATION - FLUSH MOUNTED
- TOUCH PANEL LOCATION - SURFACE MOUNTED
- ROOM SCHEDULER - FLUSH MOUNTED
- ROOM SCHEDULER - SURFACE MOUNTED
- WIRELESS MICROPHONE ANTENNA
- VOLUME CONTROL - FLUSH MOUNTED
- VOLUME CONTROL - SURFACE MOUNTED
- CARD READER LOCATION
- CARD READER LOCATION - MULLION MOUNTED
- DOOR POSITION SWITCH LOCATION
- AUDIO INTERCOM DOOR STATION LOCATION
- VIDEO INTERCOM DOOR STATION LOCATION
- MOTION SENSOR - SURFACE MOUNTED
- MOTION SENSOR - CEILING MOUNTED
- INTRUSION DETECTION KEYPAD LOCATION
- DURESS BUTTON LOCATION
- DOOR RELEASE BUTTON
- VIDEO INTERCOM ANSWERING STATION - DESK MOUNTED
- SECURITY CAMERA - CEILING MOUNTED
- SECURITY CAMERA - WALL MOUNTED

GENERAL HORIZONTAL CABLING NOTES

- MINIMUM CATEGORY 6A COMPLIANT 4-PAIR UNSHIELDED TWISTED PAIR (UTP). ALL HORIZONTAL CABLING MUST BE PLENUM RATED.
- MANUFACTURER CERTIFIED INCLUDING THE MINIMUM PERFORMANCE AND APPLICATIONS WARRANTY.
- PAINTING OF THE STRUCTURED CABLING WILL VOID THE WARRANTY. ENSURE PROPER COORDINATION WITH PAINTING CONTRACTOR SO THAT ALL STRUCTURED CABLING IS PROTECTED PRIOR TO ANY PAINTING.
- PROVIDE A MINIMUM 10 FOOT MAINTENANCE LOOP ON EACH HORIZONTAL CABLING RUN. MAINTENANCE LOOPS SHALL BE STORED ABOVE ACCESSIBLE CEILING, IN CABLE TRAY, AND IN TELECOMMUNICATION ROOM CABLE TRAY. CABLING ABOVE CEILING SHALL BE SUSPENDED FROM APPROPRIATE SUPPORTS AND SHALL NOT TOUCH THE CEILING.
- ALL PINPAIR ASSIGNMENTS SHALL BE T568B.
- REFER TO SPECIFICATION SECTION 27 15 13 FOR CABLE JACKET COLOR REQUIREMENTS.
- LABELING SHALL BE COMPLETED AS DEFINED IN THE CONTRACT DOCUMENTS AND SHALL BE COORDINATED WITH THE OWNER.
- PROVIDE ALL TELECOMMUNICATION OUTLETS AS SHOWN ON THE DRAWINGS AND AS REQUIRED TO PROVIDE CONNECTIONS FOR EACH DEVICE SHOWN ON THE DRAWINGS.
- ALL TESTING OF HORIZONTAL CABLING SHALL BE COMPLETED AS DIRECTED BY THE PROJECT SPECIFICATIONS. ALL CABLING MUST BE TESTED AND CERTIFIED TO THE APPLICABLE STANDARDS.



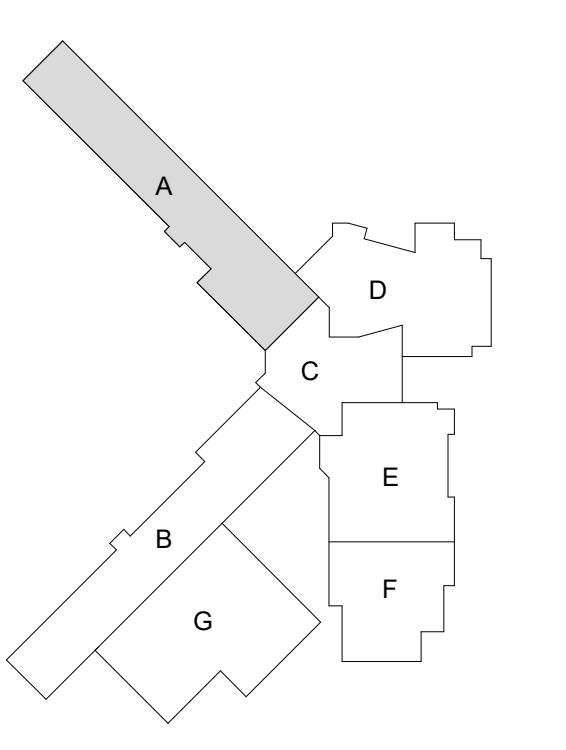
Project No. 2019-067.OSC  
Project Date 07.31.2024  
Produced MJC MKD



These Drawings and Specifications, and all copies thereof are and shall remain the property and copyright of the Architect. They shall be used only with respect to this Project and are not to be used on any other Project or Work without prior written permission from the Architect.

#	Revision	Date
1	Addendum #01	08/22/2024
2	Addendum #02	08/29/2024
3	Addendum #03	09/03/2024

8401 Westfield Blvd  
Indianapolis, IN 46240



KEY PLAN

M.S.D. of Washington Township

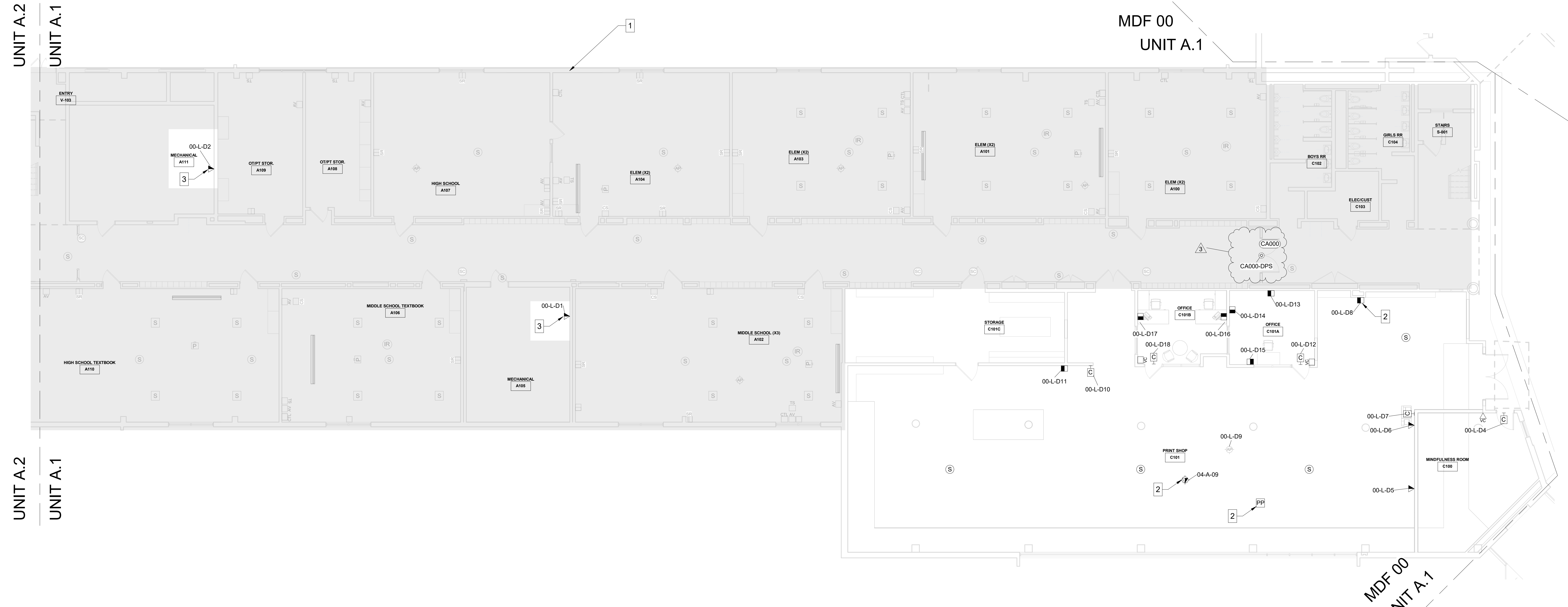


WASHINGTON TOWNSHIP SCHOOLS

SERVICE CENTER RENOVATION - PHASE 6B

FIRST FLOOR TECHNOLOGY PLAN - UNIT A1

T201A1



FIRST FLOOR TECHNOLOGY PLAN - UNIT A1  
1/8" = 1'-0"

6

5

4

3

2

1

6

5

4

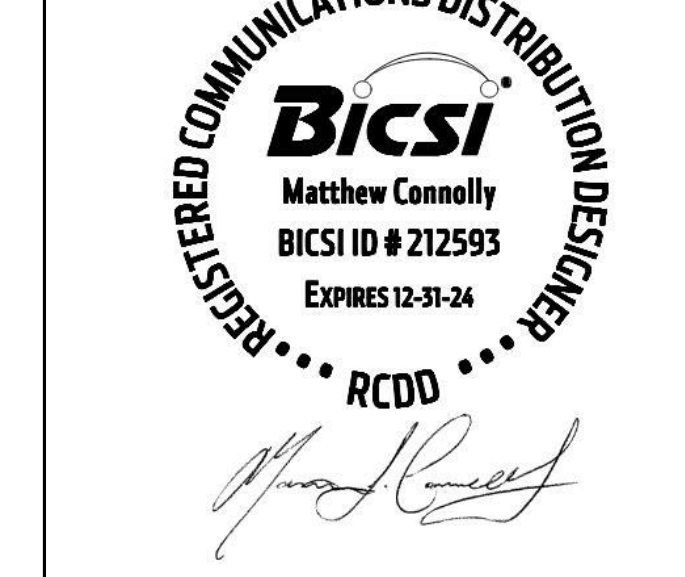
3

2

1



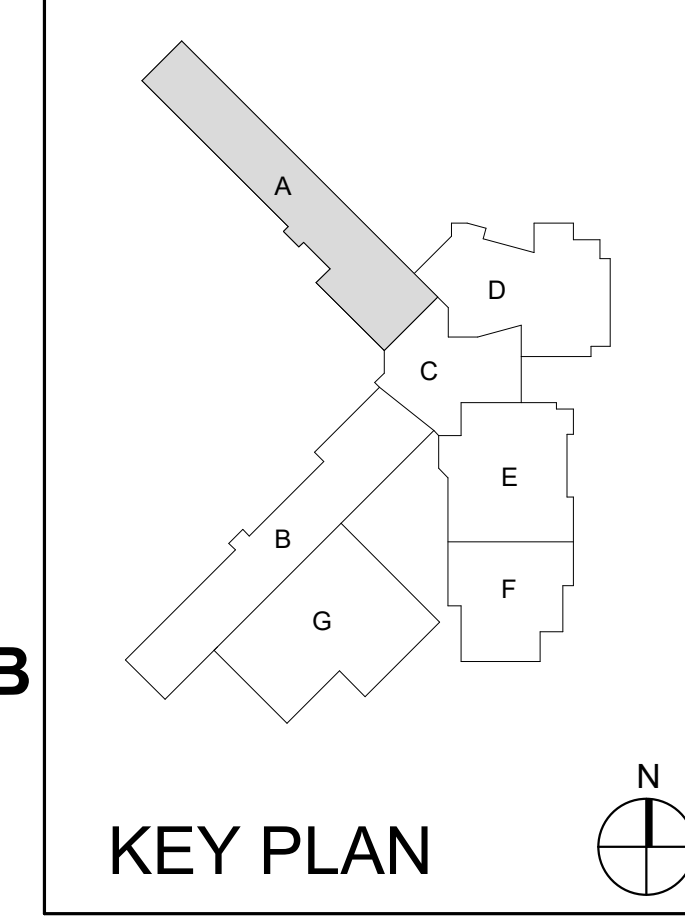
Project No. 2019-067.OSC  
 Project Date 07.31.2024  
 Produced MJC MKD



These Drawings and Specifications, and all copies thereof are and shall remain the property and copyright of the Architect. They shall be used only with respect to this Project and are not to be used on any other Project or Work without prior written permission from the Architect.

#	Revision	Date
1	Addendum #01	08/22/2024
3	Addendum #03	09/03/2024

8401 Westfield Blvd  
 Indianapolis, IN 46240



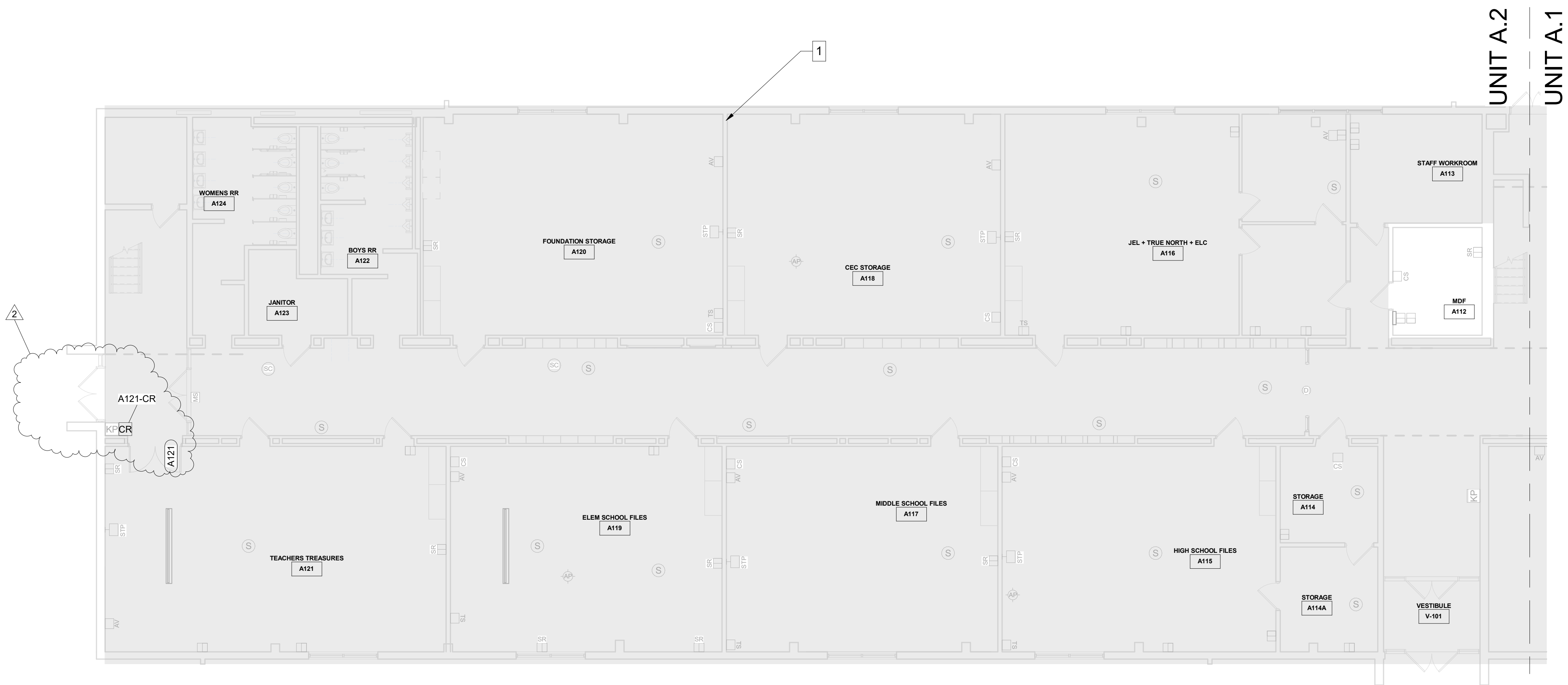
SERVIC CENTER RENOVATION - PHASE 6B  
 FIRST FLOOR TECHNOLOGY PLAN - UNIT A2  
 T201A2

- GENERAL HORIZONTAL CABLING NOTES**
- A MINIMUM CATEGORY 6A COMPLIANT 4-PAIR UNSHIELDED TWISTED PAIR (UTP). ALL HORIZONTAL CABLING MUST BE PLENUM RATED.
  - B MANUFACTURER CERTIFIED INCLUDING THE MINIMUM PERFORMANCE AND APPLICATIONS WARRANTY.
  - C PAINTING OF THE STRUCTURED CABLING WILL VOID THE WARRANTY. ENSURE PROPER COORDINATION WITH PAINTING CONTRACTOR SO THAT ALL STRUCTURED CABLING IS PROTECTED PRIOR TO ANY PAINTING.
  - D PROVIDE A MINIMUM 10 FOOT MAINTENANCE LOOP ON EACH HORIZONTAL CABLING RUN. MAINTENANCE LOOPS SHALL BE STORED ABOVE ACCESSIBLE CEILINGS, IN CABLE TRAY, AND IN TELECOMMUNICATION ROOM CABLE TRAY. CABLING ABOVE CEILING SHALL BE SUSPENDED FROM APPROPRIATE SUPPORTS AND SHALL NOT TOUCH THE CEILING.
  - E ALL PINPAIR ASSIGNMENTS SHALL BE T568B.
  - F REFER TO SPECIFICATION SECTION 27 15 13 FOR CABLE JACKET COLOR REQUIREMENTS
  - G LABELING SHALL BE COMPLETED AS DEFINED IN THE CONTRACT DOCUMENTS AND SHALL BE COORDINATED WITH THE OWNER.
  - H PROVIDE ALL TELECOMMUNICATION OUTLETS AS SHOWN ON THE DRAWINGS AND AS REQUIRED TO PROVIDE CONNECTIONS FOR EACH DEVICE SHOWN ON THE DRAWINGS.
  - I ALL TESTING OF HORIZONTAL CABLING SHALL BE COMPLETED AS DIRECTED BY THE PROJECT SPECIFICATIONS. ALL CABLING MUST BE TESTED AND CERTIFIED TO THE APPLICABLE STANDARDS.

- TECHNOLOGY LEGEND**
- DATA LOCATION - SURFACE MOUNTED
  - DATA LOCATION - FLUSH MOUNTED
  - DATA RACEWAY - SURFACE MOUNTED
  - DATA RACEWAY - FLUSH MOUNTED
  - DATA RE-CABLE LOCATION - SURFACE MOUNTED
  - DIGITAL SIGNAGE LOCATION - FLUSH MOUNTED
  - MONITOR LOCATION - FLUSH MOUNTED
  - MONITOR LOCATION - SURFACE MOUNTED
  - PROJECTOR LOCATION
  - SHORT THROW PROJECTOR LOCATION
  - TEACHER STATION LOCATION - SURFACE MOUNTED
  - WALL PHONE LOCATION - FLUSH MOUNTED
  - WALL PHONE LOCATION - SURFACE MOUNTED
  - WIRELESS ACCESS POINT - CEILING MOUNTED
  - AV INPUT LOCATION - SURFACE MOUNTED
  - AV INPUT LOCATION - FLUSH MOUNTED
  - AV CONTROL LOCATION - FLUSH MOUNTED
  - AV CONTROL LOCATION - SURFACE MOUNTED
  - AV RACK LOCATION
  - BLUETOOTH RECEIVER ANTENNA LOCATION - FLUSH MOUNTED
  - BLUETOOTH RECEIVER ANTENNA LOCATION - SURFACE MOUNTED
  - CALL SWITCH LOCATION - SURFACE MOUNTED
  - CLOCK LOCATION - SURFACE MOUNTED
  - DUAL SIDED CLOCK LOCATION - SURFACE MOUNTED
  - HEARING ASSISTANCE ANTENNA LOCATION
  - IR MICROPHONE LOCATION
  - PAGING SPEAKER - CEILING MOUNTED
  - PROGRAM SPEAKER - CEILING MOUNTED
  - PROGRAM SPEAKER - PENDANT MOUNTED
  - PROGRAM SPEAKER - SURFACE MOUNTED
  - TOUCH PANEL LOCATION - FLUSH MOUNTED
  - TOUCH PANEL LOCATION - SURFACE MOUNTED
  - ROOM SCHEDULER - FLUSH MOUNTED
  - ROOM SCHEDULER - SURFACE MOUNTED
  - WIRELESS MICROPHONE ANTENNA
  - VOLUME CONTROL - FLUSH MOUNTED
  - VOLUME CONTROL - SURFACE MOUNTED
  - CARD READER LOCATION
  - CARD READER LOCATION - MULLION MOUNTED
  - DOOR POSITION SWITCH LOCATION
  - AUDIO INTERCOM DOOR STATION LOCATION
  - VIDEO INTERCOM DOOR STATION LOCATION
  - MOTION SENSOR - SURFACE MOUNTED
  - MOTION SENSOR - CEILING MOUNTED
  - INTRUSION DETECTION KEYPAD LOCATION
  - DURESS BUTTON LOCATION
  - DOOR RELEASE BUTTON
  - VIDEO INTERCOM ANSWERING STATION - DESK MOUNTED
  - SECURITY CAMERA - CEILING MOUNTED
  - SECURITY CAMERA - WALL MOUNTED

**SHEET NOTES**

1 SHADED AREA OUTSIDE OF CONSTRUCTION SCOPE. ALL DEVICES WITHIN REGION SHALL BE PROTECTED IN PLACE THROUGH CONSTRUCTION.



FIRST FLOOR TECHNOLOGY PLAN - UNIT A2  
 1/8" = 1'-0"

6

5

4

3

2

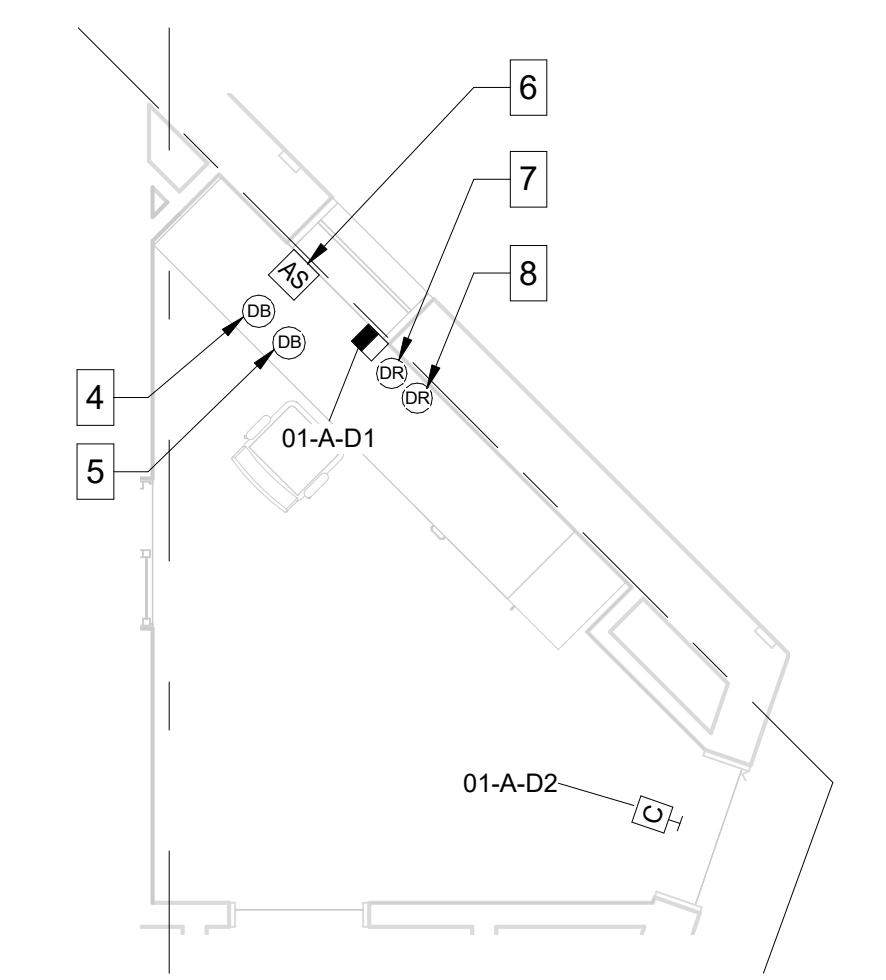
1

DATE: 08/22/2024 10:48:00 AM  
 PROJECT: 2019-067.OSC - WASHINGTON TOWNSHIP SCHOOLS - SERVIC CENTER RENOVATION - PHASE 6B  
 DRAWING: T201A2 - FIRST FLOOR TECHNOLOGY PLAN - UNIT A2  
 DESIGNED BY: MJC  
 CHECKED BY: MKD  
 APPROVED BY: MJC

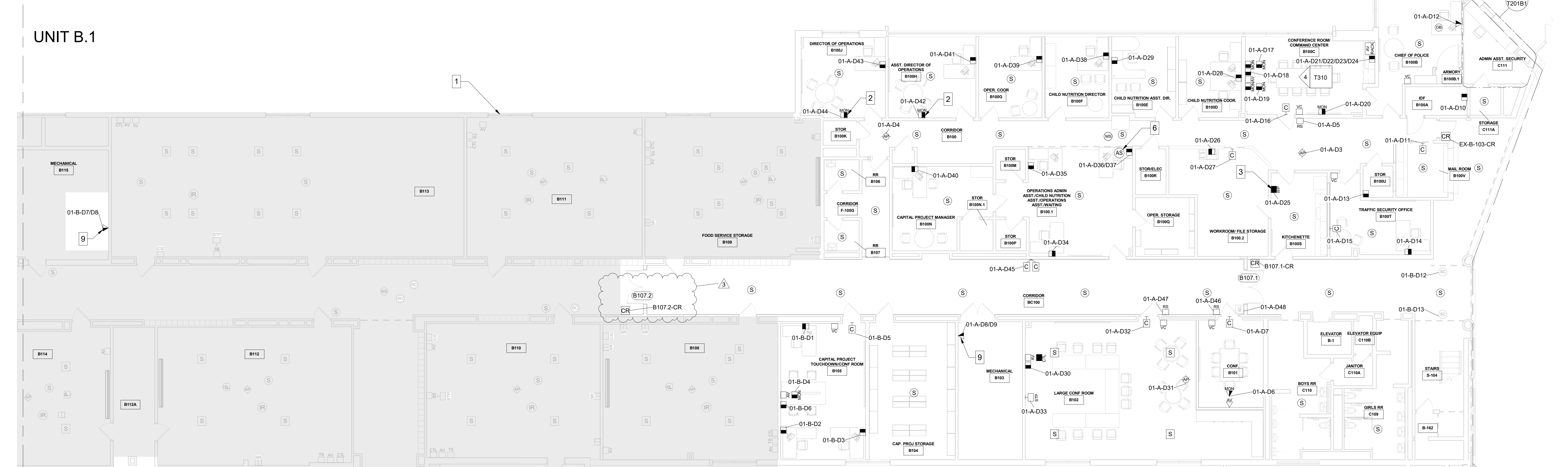
- ### SHEET NOTES
- 1 SHADED AREA OUTSIDE OF CONSTRUCTION SCOPE. ALL DEVICES WITHIN REGION SHALL BE PROTECTED IN PLACE THROUGH CONSTRUCTION.
  - 2 MONITOR ROUGH-IN LOCATION.
  - 3 TIMECLOCK LOCATION.
  - 4 911/LOCKDOWN DURESS BUTTON MOUNTED BELOW DESK. BUTTON SHALL BE LOCATED 12" FROM ADJACENT DURESS BUTTON AND MOUNTED SUCH THAT BUTTON PRESS IS AN UPWARD MOTION. REFER TO SECURITY DIAGRAMS AND DETAILS FOR CONNECTIVITY AND CABLING REQUIREMENTS. CONFIRM FINAL BUTTON LOCATION WITH OWNER'S SAFETY AND SECURITY DEPARTMENT PRIOR TO INSTALL. REFER TO SPECIFICATIONS FOR TEMPORARY LABELING REQUIREMENTS.
  - 5 SECURE EXTERIOR DOORS DURESS BUTTON MOUNTED BELOW DESK. BUTTON SHALL BE LOCATED 12" FROM ADJACENT DURESS BUTTON AND MOUNTED SUCH THAT BUTTON PRESS IS AN UPWARD MOTION. REFER TO SECURITY DIAGRAMS AND DETAILS FOR CONNECTIVITY AND CABLING REQUIREMENTS. CONFIRM FINAL BUTTON LOCATION WITH OWNER'S SAFETY AND SECURITY DEPARTMENT PRIOR TO INSTALL. REFER TO SPECIFICATIONS FOR TEMPORARY LABELING REQUIREMENTS.
  - 6 DESK MOUNTED VIDEO INTERCOM MASTER STATION COORDINATE FINAL LOCATION ON DESK WITH OWNER. CONTRACTOR SHALL PROVIDE CATEGORY 6A PATCH CORD FROM DEVICE TO NEAREST DATA LOCATION. PROGRAM DEDICATED BUTTON TO RELEASE DOOR #459.
  - 7 DOOR RELEASE BUTTON MOUNTED BELOW TRANSACTION COUNTER TO RELEASE DOOR #459. CONFIRM FINAL LOCATION WITH OWNER PRIOR TO INSTALLATION. REFER TO SPECIFICATIONS FOR TEMPORARY LABELING REQUIREMENTS.
  - 8 DOOR RELEASE BUTTON MOUNTED BELOW TRANSACTION COUNTER TO RELEASE ADA DOOR. CONFIRM FINAL LOCATION WITH OWNER PRIOR TO INSTALLATION. REFER TO SPECIFICATIONS FOR TEMPORARY LABELING REQUIREMENTS.
  - 9 DATA LOCATION SERVING GAS EQUIPMENT. COORDINATE FINAL LOCATION WITH TEMPERATURE CONTROLS CONTRACTOR.

- ### TECHNOLOGY LEGEND
- DATA LOCATION - SURFACE MOUNTED
  - DATA LOCATION - FLUSH MOUNTED
  - DATA RACEWAY - SURFACE MOUNTED
  - DATA RACEWAY - FLUSH MOUNTED
  - DATA RE-CABLE LOCATION - SURFACE MOUNTED
  - DIGITAL SIGNAGE LOCATION - FLUSH MOUNTED
  - MONITOR LOCATION - FLUSH MOUNTED
  - MONITOR LOCATION - SURFACE MOUNTED
  - POWER POLE LOCATION
  - PROJECTOR LOCATION
  - SHORT THROW PROJECTOR LOCATION
  - TEACHER STATION LOCATION - SURFACE MOUNTED
  - WALL PHONE LOCATION - FLUSH MOUNTED
  - WALL PHONE LOCATION - SURFACE MOUNTED
  - WIRELESS ACCESS POINT - CEILING MOUNTED
  - AV INPUT LOCATION - SURFACE MOUNTED
  - AV INPUT LOCATION - FLUSH MOUNTED
  - AV CONTROL LOCATION - FLUSH MOUNTED
  - AV CONTROL LOCATION - SURFACE MOUNTED
  - AV RACK LOCATION
  - BLUETOOTH RECEIVER ANTENNA LOCATION - FLUSH MOUNTED
  - BLUETOOTH RECEIVER ANTENNA LOCATION - SURFACE MOUNTED
  - CALL SWITCH LOCATION - SURFACE MOUNTED
  - CLOCK LOCATION - SURFACE MOUNTED
  - DUAL SIDED CLOCK LOCATION - SURFACE MOUNTED
  - HEARING ASSISTANCE ANTENNA LOCATION
  - IR MICROPHONE LOCATION
  - PAGING SPEAKER - CEILING MOUNTED
  - PROGRAM SPEAKER - CEILING MOUNTED
  - PROGRAM SPEAKER - SURFACE MOUNTED
  - TOUCH PANEL LOCATION - FLUSH MOUNTED
  - TOUCH PANEL LOCATION - SURFACE MOUNTED
  - ROOM SCHEDULER - FLUSH MOUNTED
  - ROOM SCHEDULER - SURFACE MOUNTED
  - WIRELESS MICROPHONE ANTENNA
  - VOLUME CONTROL - FLUSH MOUNTED
  - VOLUME CONTROL - SURFACE MOUNTED
  - CARD READER LOCATION
  - CARD READER LOCATION - MULLION MOUNTED
  - DOOR POSITION SWITCH LOCATION
  - AUDIO INTERCOM DOOR STATION LOCATION
  - VIDEO INTERCOM DOOR STATION LOCATION
  - MOTION SENSOR - SURFACE MOUNTED
  - MOTION SENSOR - CEILING MOUNTED
  - INTRUSION DETECTION KEYPAD LOCATION
  - DURESS BUTTON LOCATION
  - DOOR RELEASE BUTTON
  - VIDEO INTERCOM ANSWERING STATION - DESK MOUNTED
  - SECURITY CAMERA - CEILING MOUNTED
  - SECURITY CAMERA - WALL MOUNTED

- ### GENERAL HORIZONTAL CABLING NOTES
- MINIMUM CATEGORY 6A COMPLIANT 4-PAIR UNSHIELDED TWISTED PAIR (UTP). ALL HORIZONTAL CABLING MUST BE PLENUM RATED.
  - MANUFACTURER CERTIFIED INCLUDING THE MINIMUM PERFORMANCE AND APPLICATIONS WARRANTY.
  - PAINTING OF THE STRUCTURED CABLING WILL VOID THE WARRANTY. ENSURE PROPER COORDINATION WITH PAINTING CONTRACTOR SO THAT ALL STRUCTURED CABLING IS PROTECTED PRIOR TO ANY PAINTING.
  - PROVIDE A MINIMUM 10 FOOT MAINTENANCE LOOP ON EACH HORIZONTAL CABLING RUN. MAINTENANCE LOOPS SHALL BE STORED ABOVE ACCESSIBLE CEILING, IN CABLE TRAY, AND IN TELECOMMUNICATION ROOM CABLE TRAY. CABLING ABOVE CEILING SHALL BE SUSPENDED FROM APPROPRIATE SUPPORTS AND SHALL NOT TOUCH THE CEILING.
  - ALL PINPAIR ASSIGNMENTS SHALL BE T568B.
  - REFER TO SPECIFICATION SECTION 27 15 13 FOR CABLE JACKET COLOR REQUIREMENTS
  - LABELING SHALL BE COMPLETED AS DEFINED IN THE CONTRACT DOCUMENTS AND SHALL BE COORDINATED WITH THE OWNER.
  - PROVIDE ALL TELECOMMUNICATION OUTLETS AS SHOWN ON THE DRAWINGS AND AS REQUIRED TO PROVIDE CONNECTIONS FOR EACH DEVICE SHOWN ON THE DRAWINGS.
  - ALL TESTING OF HORIZONTAL CABLING SHALL BE COMPLETED AS DIRECTED BY THE PROJECT SPECIFICATIONS. ALL CABLING MUST BE TESTED AND CERTIFIED TO THE APPLICABLE STANDARDS.



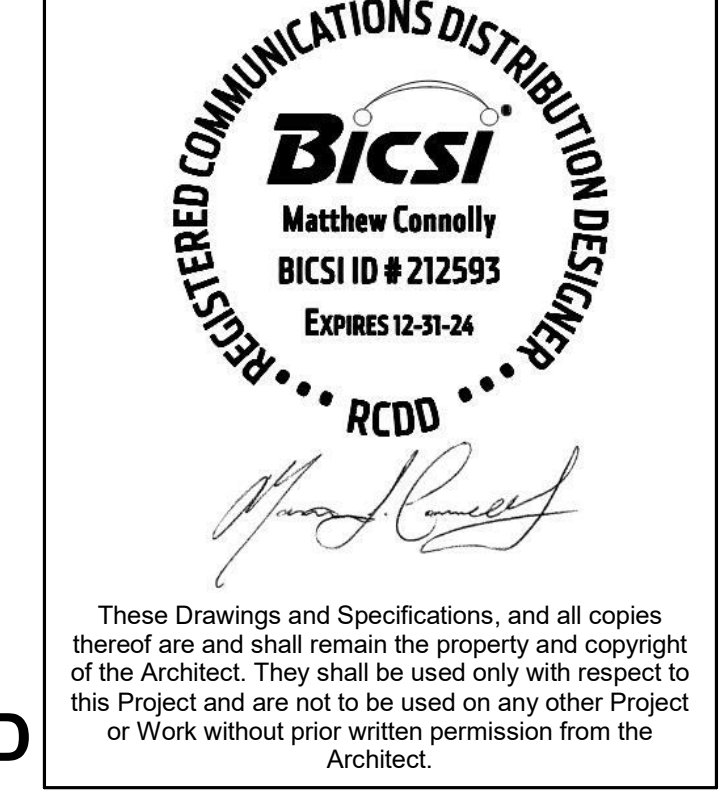
2 ADMIN ASST. SECURITY H101U  
ENLARGED DESK LAYOUT  
1/4" = 1'-0"



1 FIRST FLOOR TECHNOLOGY PLAN -  
UNIT B1  
1/8" = 1'-0"

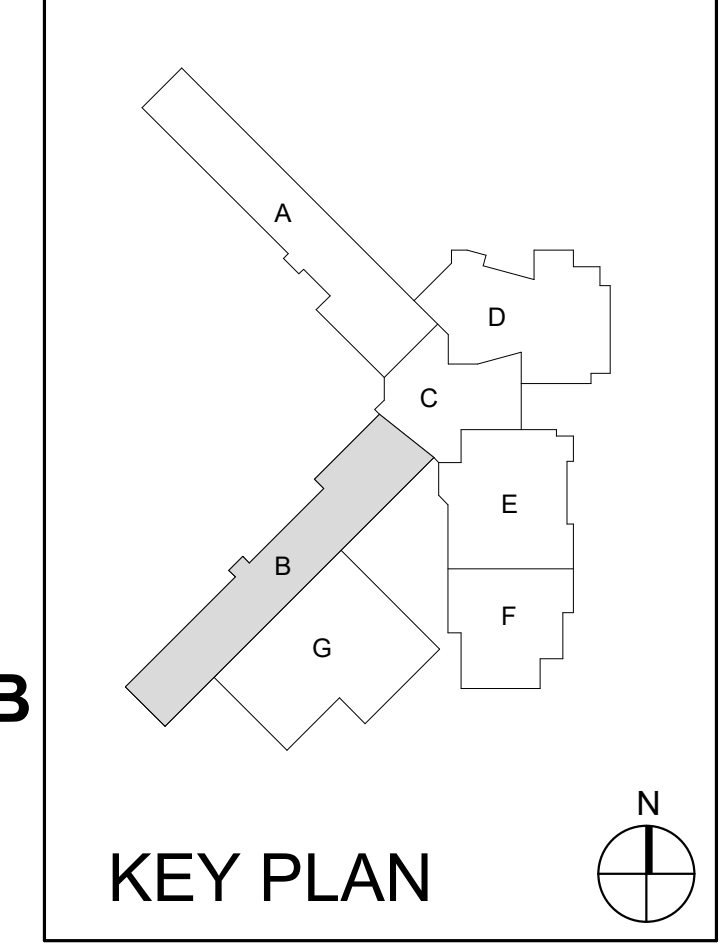


Project No. 2019-067.OSC  
Project Date 07.31.2024  
Produced MJC MKD



#	Revision	Date
1	Addendum #01	08/22/2024
2	Addendum #02	08/29/2024
3	Addendum #03	09/03/2024

8401 Westfield Blvd  
Indianapolis, IN 46240



FIRST FLOOR  
TECHNOLOGY PLAN  
- UNIT B1  
T201B1

6

5

4

3

2

1

6

5

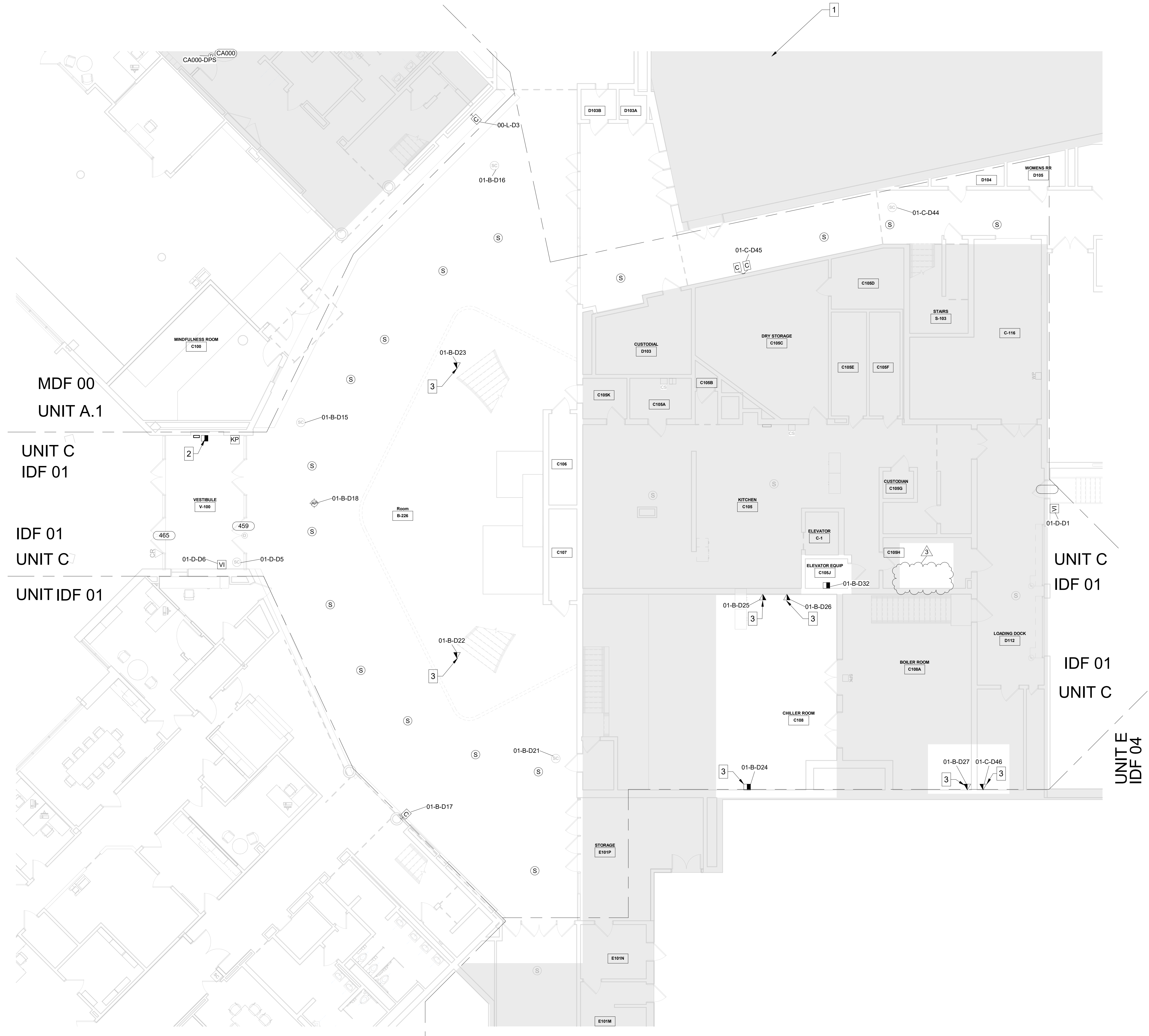
4

3

2

1

E  
D  
C  
B  
A



FIRST FLOOR TECHNOLOGY PLAN -  
UNIT C  
1/8" = 1'-0"

**GENERAL HORIZONTAL CABLING NOTES**

- A MINIMUM CATEGORY 6A COMPLIANT 4-PAIR UNSHIELDED TWISTED PAIR (UTP). ALL HORIZONTAL CABLING MUST BE PLENUM RATED.
- B MANUFACTURER CERTIFIED INCLUDING THE MINIMUM PERFORMANCE AND APPLICATIONS WARRANTY.
- C PAINTING OF THE STRUCTURED CABLING WILL VOID THE WARRANTY. ENSURE PROPER COORDINATION WITH PAINTING CONTRACTOR SO THAT ALL STRUCTURED CABLING IS PROTECTED PRIOR TO ANY PAINTING.
- D PROVIDE A MINIMUM 10 FOOT MAINTENANCE LOOP ON EACH HORIZONTAL CABLING RUN. MAINTENANCE LOOPS SHALL BE STORED ABOVE ACCESSIBLE CEILINGS, IN CABLE TRAY, AND IN TELECOMMUNICATION ROOM CABLE TRAY. CABLING ABOVE CEILING SHALL BE SUSPENDED FROM APPROPRIATE SUPPORTS AND SHALL NOT TOUCH THE CEILING.
- E ALL PINPAIR ASSIGNMENTS SHALL BE T568B.
- F REFER TO SPECIFICATION SECTION 27 15 13 FOR CABLE JACKET COLOR REQUIREMENTS
- G LABELING SHALL BE COMPLETED AS DEFINED IN THE CONTRACT DOCUMENTS AND SHALL BE COORDINATED WITH THE OWNER.
- H PROVIDE ALL TELECOMMUNICATION OUTLETS AS SHOWN ON THE DRAWINGS AND AS REQUIRED TO PROVIDE CONNECTIONS FOR EACH DEVICE SHOWN ON THE DRAWINGS.
- I ALL TESTING OF HORIZONTAL CABLING SHALL BE COMPLETED AS DIRECTED BY THE PROJECT SPECIFICATIONS. ALL CABLING MUST BE TESTED AND CERTIFIED TO THE APPLICABLE STANDARDS.

**TECHNOLOGY LEGEND**

- DATA LOCATION - SURFACE MOUNTED
- ▽ DATA LOCATION - FLUSH MOUNTED
- ▬ DATA RACEWAY - SURFACE MOUNTED
- ▬ DATA RACEWAY - FLUSH MOUNTED
- ▬ DATA RE-CABLE LOCATION - SURFACE MOUNTED
- ▬ DIGITAL SIGNAGE LOCATION - FLUSH MOUNTED
- MONITOR LOCATION - SURFACE MOUNTED
- MONITOR LOCATION - SURFACE MOUNTED
- POWER POLE LOCATION
- PROJECTOR LOCATION
- SHORT THROW PROJECTOR LOCATION
- TEACHER STATION LOCATION - SURFACE MOUNTED
- WALL PHONE LOCATION - FLUSH MOUNTED
- WALL PHONE LOCATION - SURFACE MOUNTED
- WIRELESS ACCESS POINT - CEILING MOUNTED
- AV INPUT LOCATION - SURFACE MOUNTED
- AV INPUT LOCATION - FLUSH MOUNTED
- AV CONTROL LOCATION - FLUSH MOUNTED
- AV CONTROL LOCATION - SURFACE MOUNTED
- AV RACK LOCATION
- BLUETOOTH RECEIVER ANTENNA LOCATION - FLUSH MOUNTED
- BLUETOOTH RECEIVER ANTENNA LOCATION - SURFACE MOUNTED
- CALL SWITCH LOCATION - SURFACE MOUNTED
- CLOCK LOCATION - SURFACE MOUNTED
- DUAL SIDED CLOCK LOCATION - SURFACE MOUNTED
- HEARING ASSISTANCE ANTENNA LOCATION
- IR MICROPHONE LOCATION
- PAGING SPEAKER - CEILING MOUNTED
- PROGRAM SPEAKER - CEILING MOUNTED
- PROGRAM SPEAKER - PENDANT MOUNTED
- PROGRAM SPEAKER - SURFACE MOUNTED
- TOUCH PANEL LOCATION - FLUSH MOUNTED
- TOUCH PANEL LOCATION - SURFACE MOUNTED
- ROOM SCHEDULER - FLUSH MOUNTED
- ROOM SCHEDULER - SURFACE MOUNTED
- WIRELESS MICROPHONE ANTENNA
- VOLUME CONTROL - FLUSH MOUNTED
- VOLUME CONTROL - SURFACE MOUNTED
- CARD READER LOCATION
- CARD READER LOCATION - MULLION MOUNTED
- DOOR POSITION SWITCH LOCATION
- AUDIO INTERCOM DOOR STATION LOCATION
- VIDEO INTERCOM DOOR STATION LOCATION
- MOTION SENSOR - SURFACE MOUNTED
- MOTION SENSOR - CEILING MOUNTED
- INTRUSION DETECTION KEYPAD LOCATION
- DURESS BUTTON LOCATION
- DOOR RELEASE BUTTON
- VIDEO INTERCOM ANSWERING STATION - DESK MOUNTED
- SECURITY CAMERA - CEILING MOUNTED
- SECURITY CAMERA - WALL MOUNTED

**SHEET NOTES**

- 1 SHADED AREA OUTSIDE OF CONSTRUCTION SCOPE. ALL DEVICES WITHIN REGION SHALL BE PROTECTED IN PLACE THROUGH CONSTRUCTION.
- 2 DATA TO SERVE FACP PANEL.
- 3 DATA LOCATION SERVING BAS EQUIPMENT. COORDINATE FINAL LOCATION WITH TEMPERATURE CONTROLS CONTRACTOR.



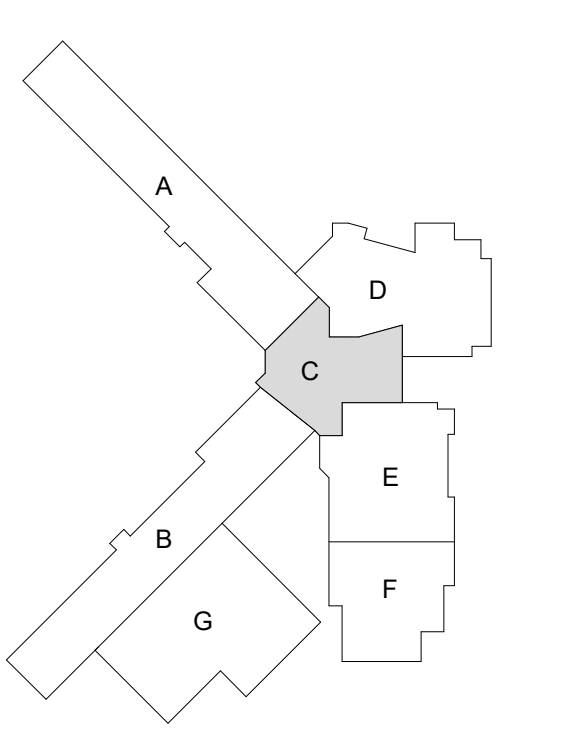
Project No. 2019-067.OSC  
Project Date 07.31.2024  
Produced MJC MKD



These Drawings and Specifications, and all copies thereof are and shall remain the property and copyright of the Architect. They shall be used only with respect to this Project and are not to be used on any other Project or Work without prior written permission from the Architect.

#	Revision	Date
1	Addendum #01	08/22/2024
2	Addendum #02	08/29/2024
3	Addendum #03	09/03/2024

8401 Westfield Blvd  
Indianapolis, IN 46240



KEY PLAN

M.S.D. of  
Washington  
Township



WASHINGTON  
TOWNSHIP SCHOOLS

SERVIC CENTER  
RENOVATION -  
PHASE 6B

FIRST FLOOR  
TECHNOLOGY PLAN  
- UNIT C

T201C

2024, 4842 FIRST FLOOR TECHNOLOGY PLAN, UNIT C  
 20240903 08:15:12 # 1/8" = 1'-0" MJC MKD  
 4842201C T201C  
 4842201C T201C

6

5

4

3

2

1

E

D

C

B

A

E

D

C

B

A

6

5

4

3

2

1

E

D

C

B

A

E

D

C

B

A

E

D

C

B

A

E

D

C

B

A

E

D

C

B

A

E

D

C

B

A

E

D

C

B

A

E

D

C

B

A

E

D

C

B

A

E

D

C

B

A

E

D

C

B

A

E

D

C

B

A

E

D

C

B

A

E

D

C

B

A

E

D

C

B

A

E

D

C

B

A

E

D

C

B

A

E

D

C

B

A

E

D

C

B

A

E

D

C

B

A

E

D

C

B

A

E

D

C

B

A

E

D

C

B

A

E

D

C

B

A

E

D

C

B

A

E

D

C

B

A

E

D

C

B

A

E

D

C

B

A

E

D

C

B

A

E

D

C

B

A

E

D

C

B

A

E

D

C

B

A

E

D

C

B

A

E

D

C

B

A

E

D

C

B

A

E

D

C

B

A

E

D

C

B

A

E

D

C

B

A

E

D

C

B

A

E

D

C

B

A

E

D

C

B

A

E

D

C

B

A

E

D

C

B

A

E

D

C

B

A

E

D

C

B

A

E

D

C

B

A

E

D

C

B

A

E

D

C

B

A

E

D

C

B

A

E

D

C

B

A

E

D

C

B

A

E

D

C

B

A

E

D

C

B

A

E

D

C

B

A

E

D

C

B

A

E

D

C

B

A

E

D

C

B

A

E

D

C

B

A

E

D

C

B

A

E

D

C

B

A

E

D

C

B

A

E

D

C

B

A

E

D

C

B

A

E

D

C

B

A

E

D

C



6 5 4 3 2 1

E D C B A

**SHEET NOTES**

- 1 SHADED AREA OUTSIDE OF CONSTRUCTION SCOPE. ALL DEVICES WITHIN REGION SHALL BE PROTECTED IN PLACE THROUGH CONSTRUCTION.
- 2 DATA LOCATION SERVING BAS EQUIPMENT. COORDINATE FINAL LOCATION WITH TEMPERATURE CONTROLS CONTRACTOR.

**TECHNOLOGY LEGEND**

■ DATA LOCATION - SURFACE MOUNTED	Ⓞ DUAL SIDED CLOCK LOCATION - SURFACE MOUNTED
▼ DATA LOCATION - FLUSH MOUNTED	Ⓜ HEARING ASSISTANCE ANTENNA LOCATION
SR DATA RACEWAY - SURFACE MOUNTED	Ⓜ IR MICROPHONE LOCATION
SR DATA RACEWAY - FLUSH MOUNTED	Ⓜ PAGING SPEAKER - CEILING MOUNTED
SR DATA RE-CABLE LOCATION - SURFACE MOUNTED	Ⓜ PROGRAM SPEAKER - CEILING MOUNTED
SR DATA RE-CABLE LOCATION - FLUSH MOUNTED	Ⓜ PROGRAM SPEAKER - SURFACE MOUNTED
MONITOR LOCATION - FLUSH MOUNTED	Ⓜ TOUCH PANEL LOCATION - FLUSH MOUNTED
MONITOR LOCATION - SURFACE MOUNTED	Ⓜ TOUCH PANEL LOCATION - SURFACE MOUNTED
PP POWER POLE LOCATION	Ⓜ ROOM SCHEDULER - FLUSH MOUNTED
P PROJECTOR LOCATION	Ⓜ ROOM SCHEDULER - SURFACE MOUNTED
STP SHORT THROW PROJECTOR LOCATION	Ⓜ WIRELESS MICROPHONE ANTENNA
TS TEACHER STATION LOCATION - SURFACE MOUNTED	Ⓜ VOLUME CONTROL - FLUSH MOUNTED
Ⓜ WALL PHONE LOCATION - FLUSH MOUNTED	Ⓜ VOLUME CONTROL - SURFACE MOUNTED
Ⓜ WALL PHONE LOCATION - SURFACE MOUNTED	CR CARD READER LOCATION
Ⓜ WIRELESS ACCESS POINT - CEILING MOUNTED	Ⓜ CARD READER LOCATION - MULLION MOUNTED
Ⓜ AV INPUT LOCATION - SURFACE MOUNTED	Ⓜ DOOR POSITION SWITCH LOCATION
Ⓜ AV INPUT LOCATION - FLUSH MOUNTED	AI AUDIO INTERCOM DOOR STATION LOCATION
Ⓜ AV CONTROL LOCATION - FLUSH MOUNTED	VI VIDEO INTERCOM DOOR STATION LOCATION
Ⓜ AV CONTROL LOCATION - SURFACE MOUNTED	MS MOTION SENSOR - SURFACE MOUNTED
AR AV RACK LOCATION	MS MOTION SENSOR - CEILING MOUNTED
BA BLUETOOTH RECEIVER ANTENNA LOCATION - FLUSH MOUNTED	KP INTRUSION DETECTION KEYPAD LOCATION
BA BLUETOOTH RECEIVER ANTENNA LOCATION - SURFACE MOUNTED	DB DURESS BUTTON LOCATION
CS CALL SWITCH LOCATION - SURFACE MOUNTED	DB DOOR RELEASE BUTTON
C CLOCK LOCATION - SURFACE MOUNTED	AS VIDEO INTERCOM ANSWERING STATION - DESK MOUNTED
	SC SECURITY CAMERA - CEILING MOUNTED
	SC SECURITY CAMERA - WALL MOUNTED

**GENERAL HORIZONTAL CABLING NOTES**

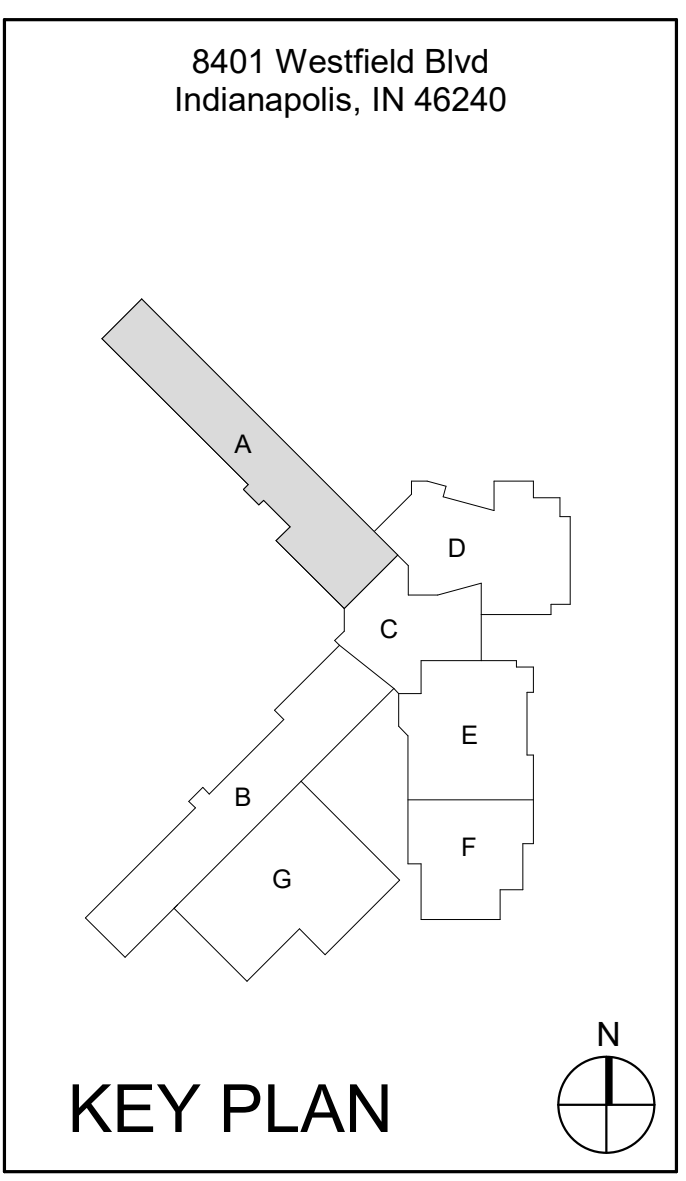
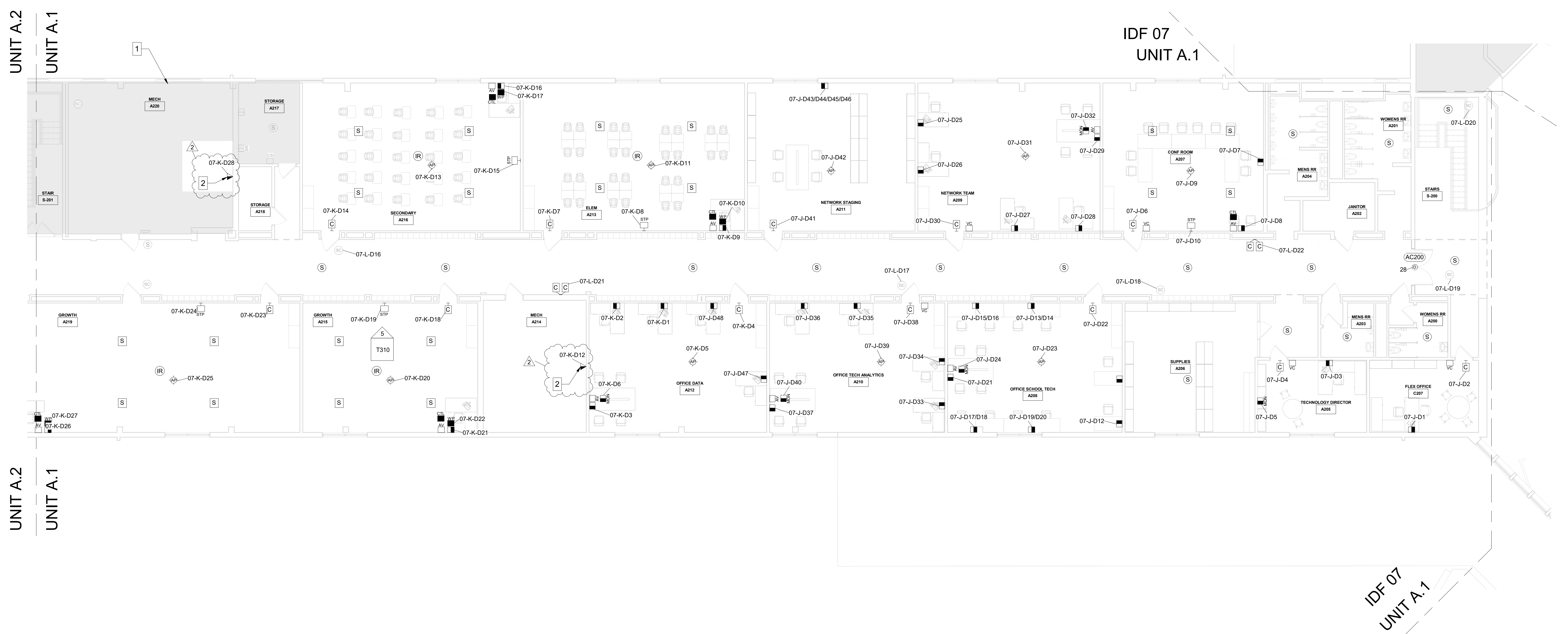
- MINIMUM CATEGORY 6A COMPLIANT 4-PAIR UNSHIELDED TWISTED PAIR (UTP). ALL HORIZONTAL CABLING MUST BE PLENUM RATED.
- MANUFACTURER CERTIFIED INCLUDING THE MINIMUM PERFORMANCE AND APPLICATIONS WARRANTY.
- PAINTING OF THE STRUCTURED CABLING WILL VOID THE WARRANTY. ENSURE PROPER COORDINATION WITH PAINTING CONTRACTOR SO THAT ALL STRUCTURED CABLING IS PROTECTED PRIOR TO ANY PAINTING.
- PROVIDE A MINIMUM 10 FOOT MAINTENANCE LOOP ON EACH HORIZONTAL CABLING RUN. MAINTENANCE LOOPS SHALL BE STORED ABOVE ACCESSIBLE CEILING, IN CABLE TRAY, AND IN TELECOMMUNICATION ROOM CABLE TRAY. CABLING ABOVE CEILING SHALL BE SUSPENDED FROM APPROPRIATE SUPPORTS AND SHALL NOT TOUCH THE CEILING.
- ALL PNP/PAIR ASSIGNMENTS SHALL BE T568B.
- REFER TO SPECIFICATION SECTION 27 15 13 FOR CABLE JACKET COLOR REQUIREMENTS.
- LABELING SHALL BE COMPLETED AS DEFINED IN THE CONTRACT DOCUMENTS AND SHALL BE COORDINATED WITH THE OWNER.
- PROVIDE ALL TELECOMMUNICATION OUTLETS AS SHOWN ON THE DRAWINGS AND AS REQUIRED TO PROVIDE CONNECTIONS FOR EACH DEVICE SHOWN ON THE DRAWINGS.
- ALL TESTING OF HORIZONTAL CABLING SHALL BE COMPLETED AS DIRECTED BY THE PROJECT SPECIFICATIONS. ALL CABLING MUST BE TESTED AND CERTIFIED TO THE APPLICABLE STANDARDS.



Project No. 2019-067.OSC  
 Project Date 07.31.2024  
 Produced MJC MKD

These Drawings and Specifications, and all copies thereof are and shall remain the property and copyright of the Architect. They shall be used only with respect to this Project and are not to be used on any other Project or Work without prior written permission from the Architect.

#	Revision	Date
1	Addendum #01	08/22/2024
3	Addendum #03	09/03/2024



M.S.D. of Washington Township

WASHINGTON TOWNSHIP SCHOOLS  
 SERVIC CENTER RENOVATION - PHASE 6B

SECOND FLOOR TECHNOLOGY PLAN - UNIT A1  
 T202A1

6 5 4 3 2 1

SECOND FLOOR TECHNOLOGY PLAN - UNIT A1  
 1/8" = 1'-0"

DATE: 08/22/2024 10:58:00 AM  
 PROJECT: M.S.D. of Washington Township - SERVIC CENTER RENOVATION - PHASE 6B  
 DRAWING: SECOND FLOOR TECHNOLOGY PLAN - UNIT A1  
 SHEET: T202A1







**SCHMIDT ASSOCIATES**  
 415 Massachusetts Avenue  
 Indianapolis, IN 46204  
 www.schmidt-arch.com

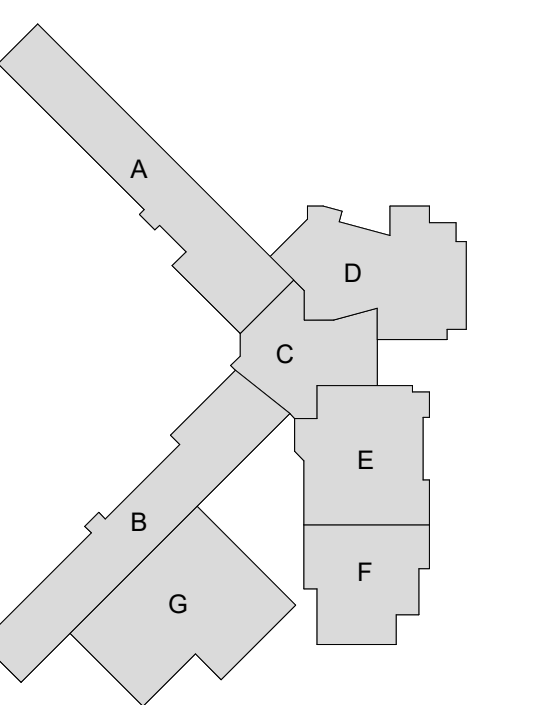
Project No. 2019-067.OSC  
 Project Date 07.31.2024  
 Produced MJC MKD



These Drawings and Specifications, and all copies thereof are and shall remain the property and copyright of the Architect. They shall be used only with respect to this Project and are not to be used on any other Project or Work without prior written permission from the Architect.

#	Revision	Date
3	Addendum #03	09/03/2024

8401 Westfield Blvd  
 Indianapolis, IN 46240



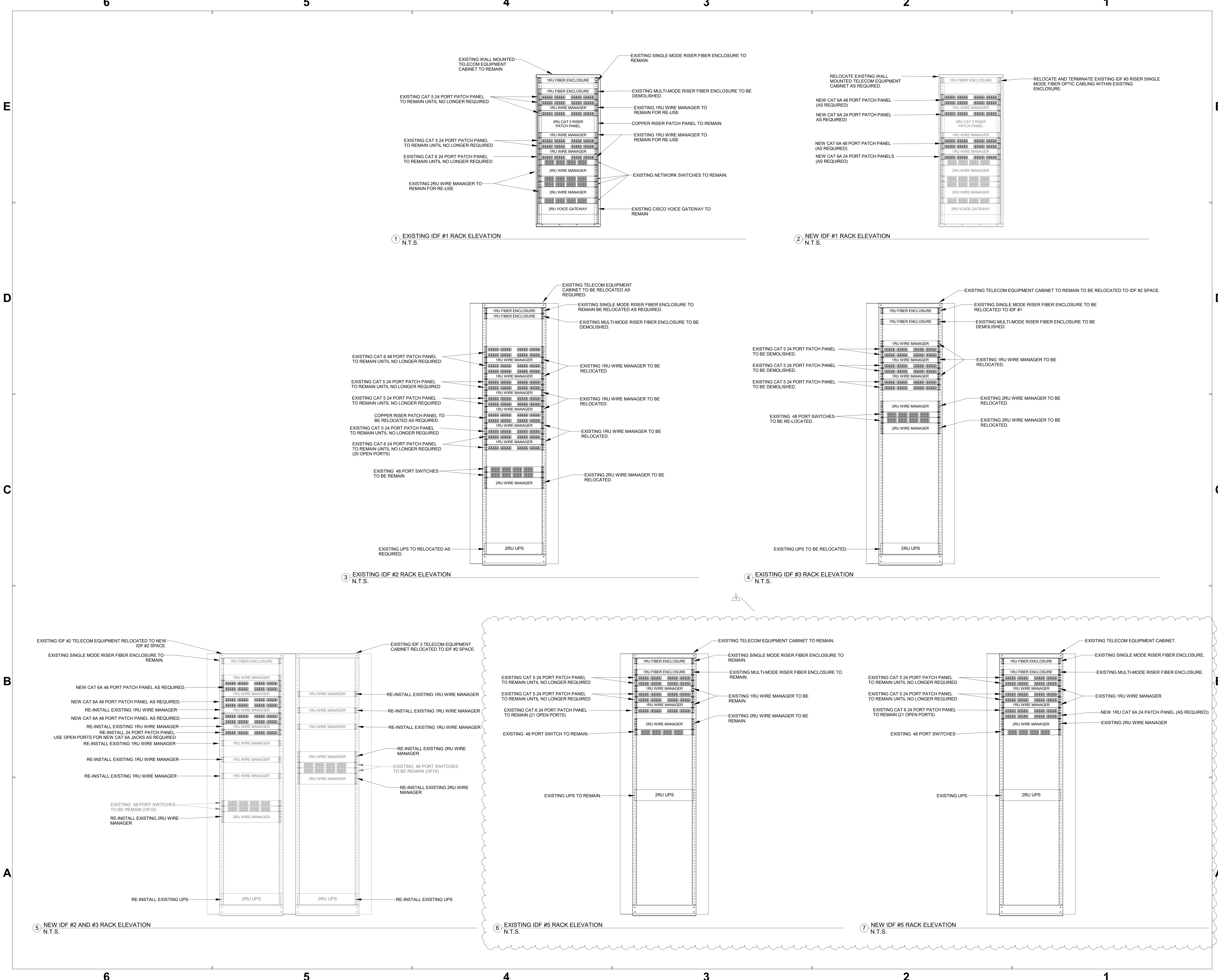
**KEY PLAN**

M.S.D. of  
 Washington  
 Township

**WASHINGTON TOWNSHIP SCHOOLS**  
 SERVICE CENTER RENOVATION - PHASE 6B

RACK ELEVATIONS

T304



1 EXISTING IDF #1 RACK ELEVATION  
 N.T.S.

2 NEW IDF #1 RACK ELEVATION  
 N.T.S.

3 EXISTING IDF #2 RACK ELEVATION  
 N.T.S.

4 EXISTING IDF #3 RACK ELEVATION  
 N.T.S.

5 NEW IDF #2 AND #3 RACK ELEVATION  
 N.T.S.

6 EXISTING IDF #5 RACK ELEVATION  
 N.T.S.

7 NEW IDF #5 RACK ELEVATION  
 N.T.S.

DATE: 08/28/2024  
 DRAWN: MJC  
 CHECKED: MKD  
 PROJECT: 2019-067.OSC - PHASE 6B  
 SHEET: T304 - RACK ELEVATIONS  
 10/28/2024 10:00 AM



6

5

4

3

2

1

E

D

C


B

A



**SCHMIDT ASSOCIATES**  
415 Massachusetts Avenue  
Indianapolis, IN 46204  
www.schmidt-arch.com

Project No. 2019-067.OSC  
Project Date 07.31.2024  
Produced MJC MKD

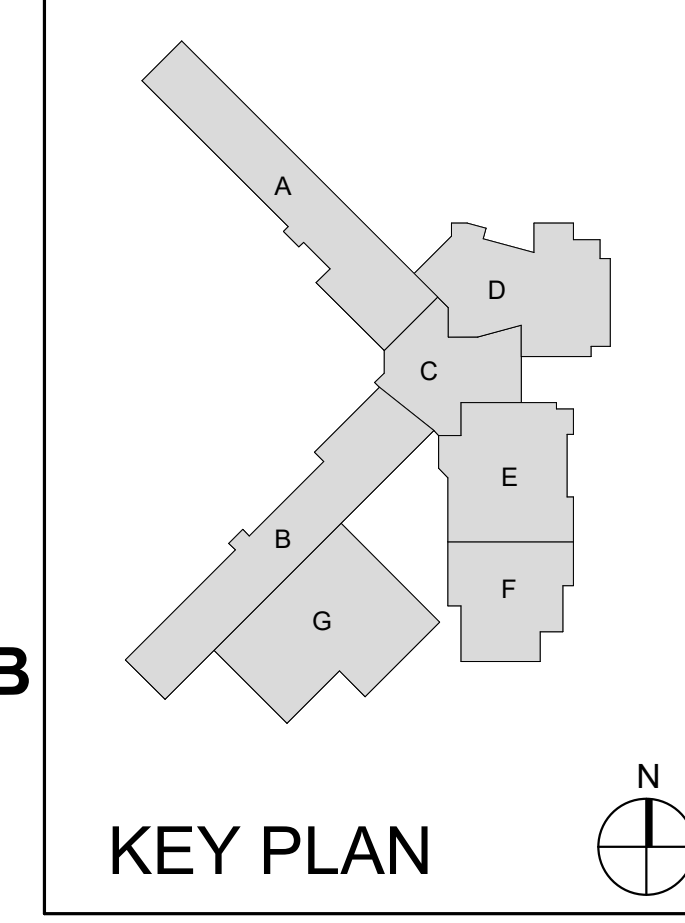


**BICSI**  
Matthew Connolly  
BICSI ID # 212593  
EXPIRES 12-31-24  
RCDD

These Drawings and Specifications, and all copies thereof are and shall remain the property and copyright of the Architect. They shall be used only with respect to this Project and are not to be used on any other Project or Work without prior written permission from the Architect.

#	Revision	Date
1	Addendum #01	08/22/2024
3	Addendum #03	09/03/2024

8401 Westfield Blvd  
Indianapolis, IN 46240



M.S.D. of Washington Township

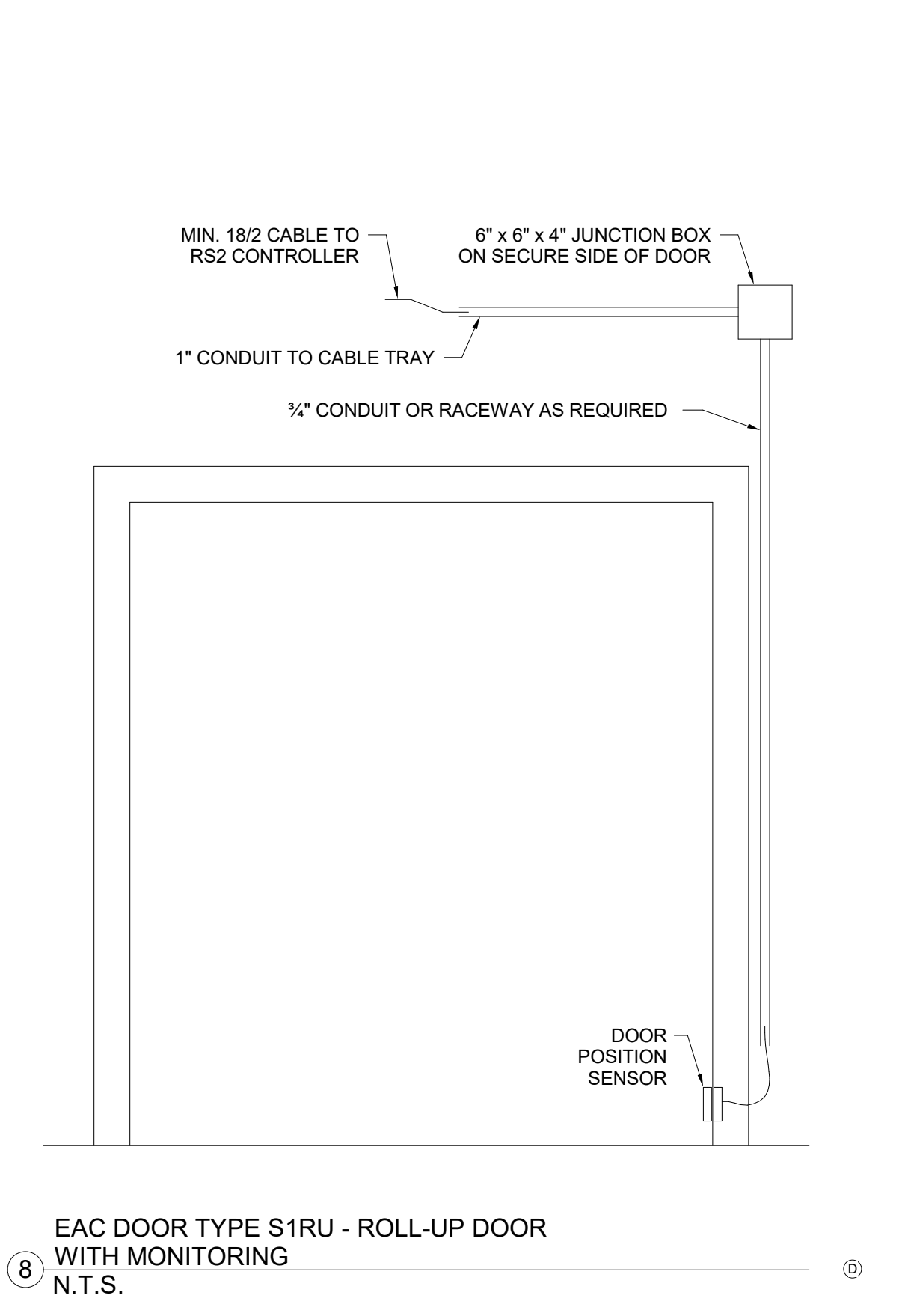
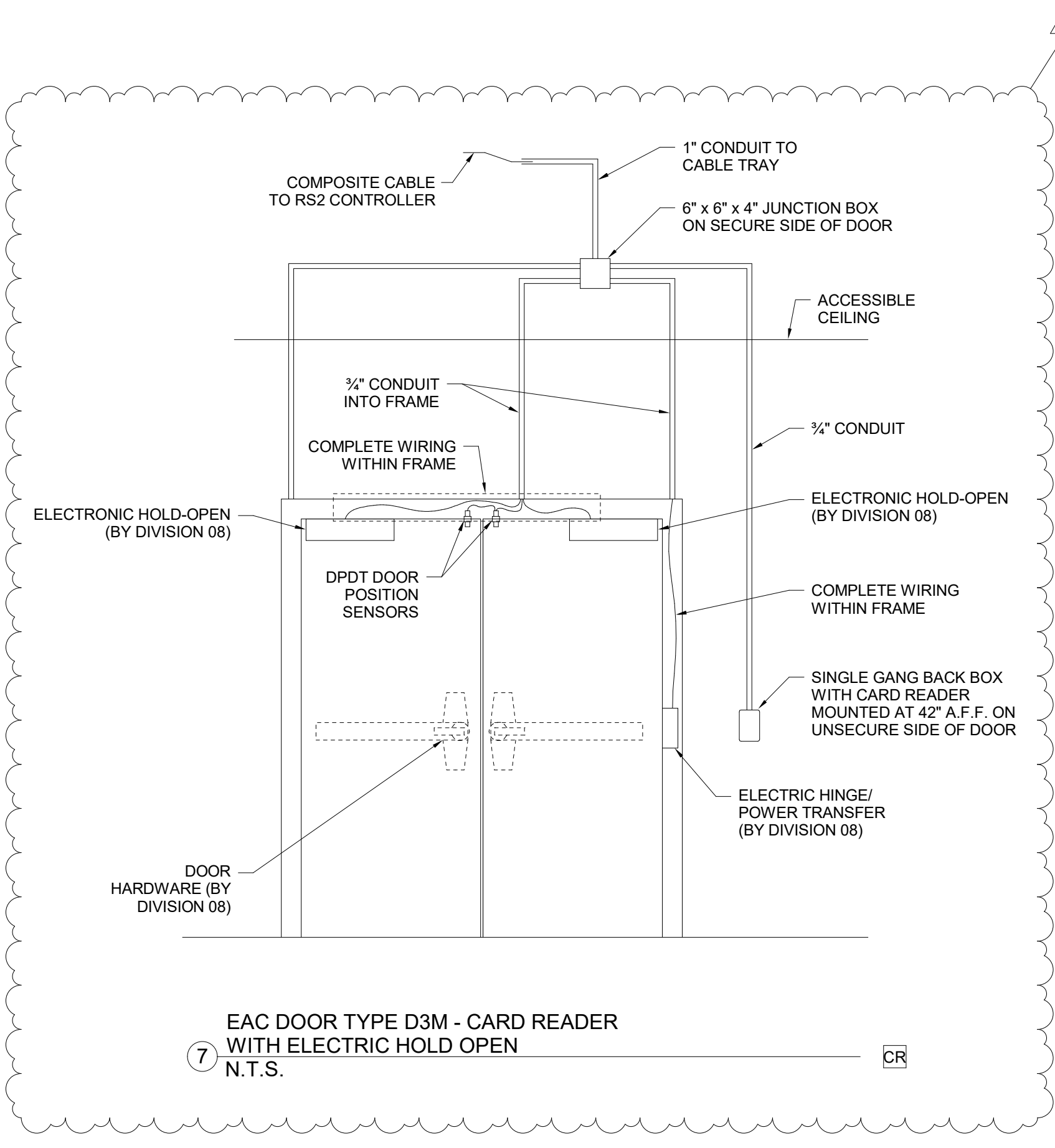
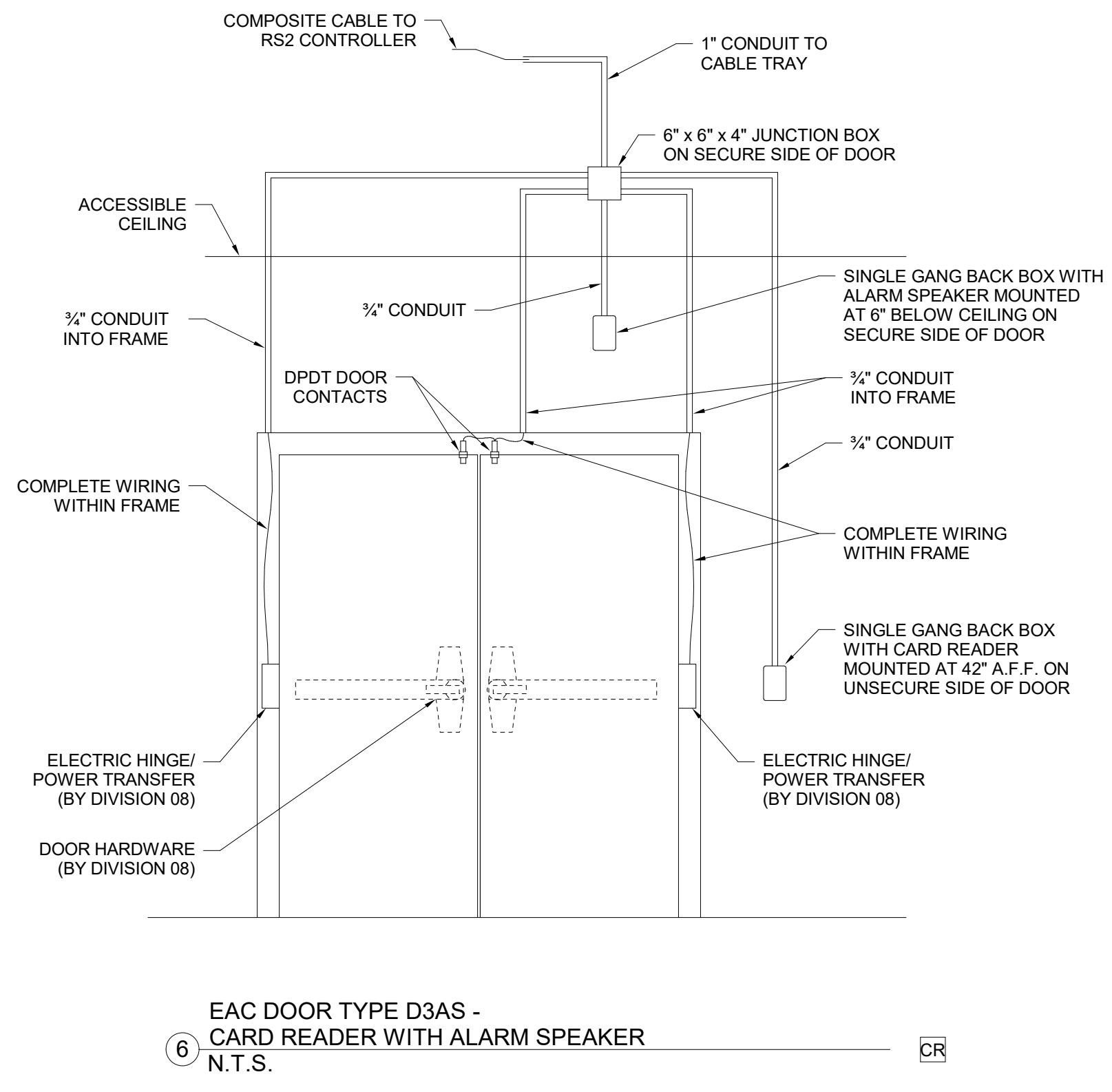
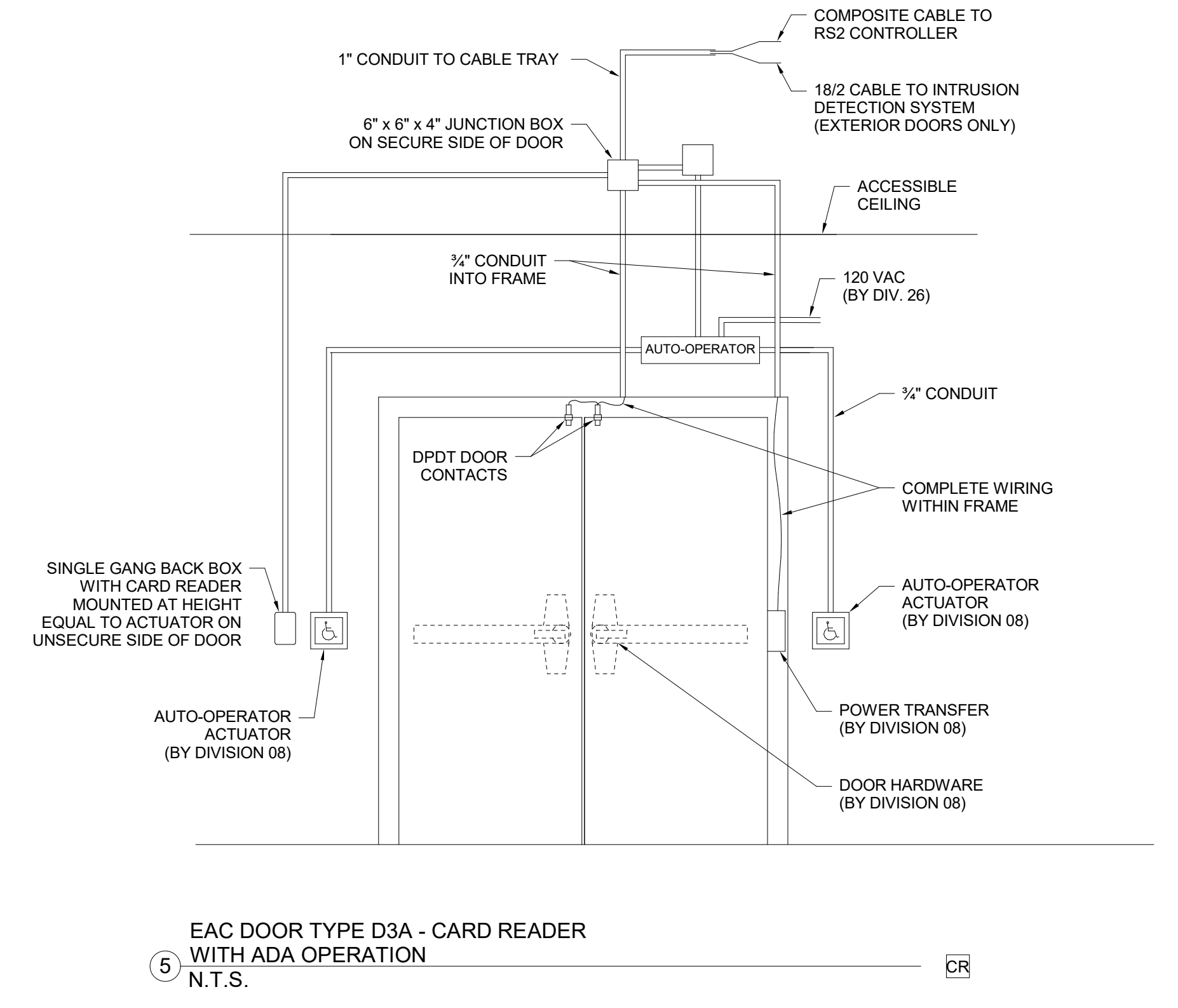
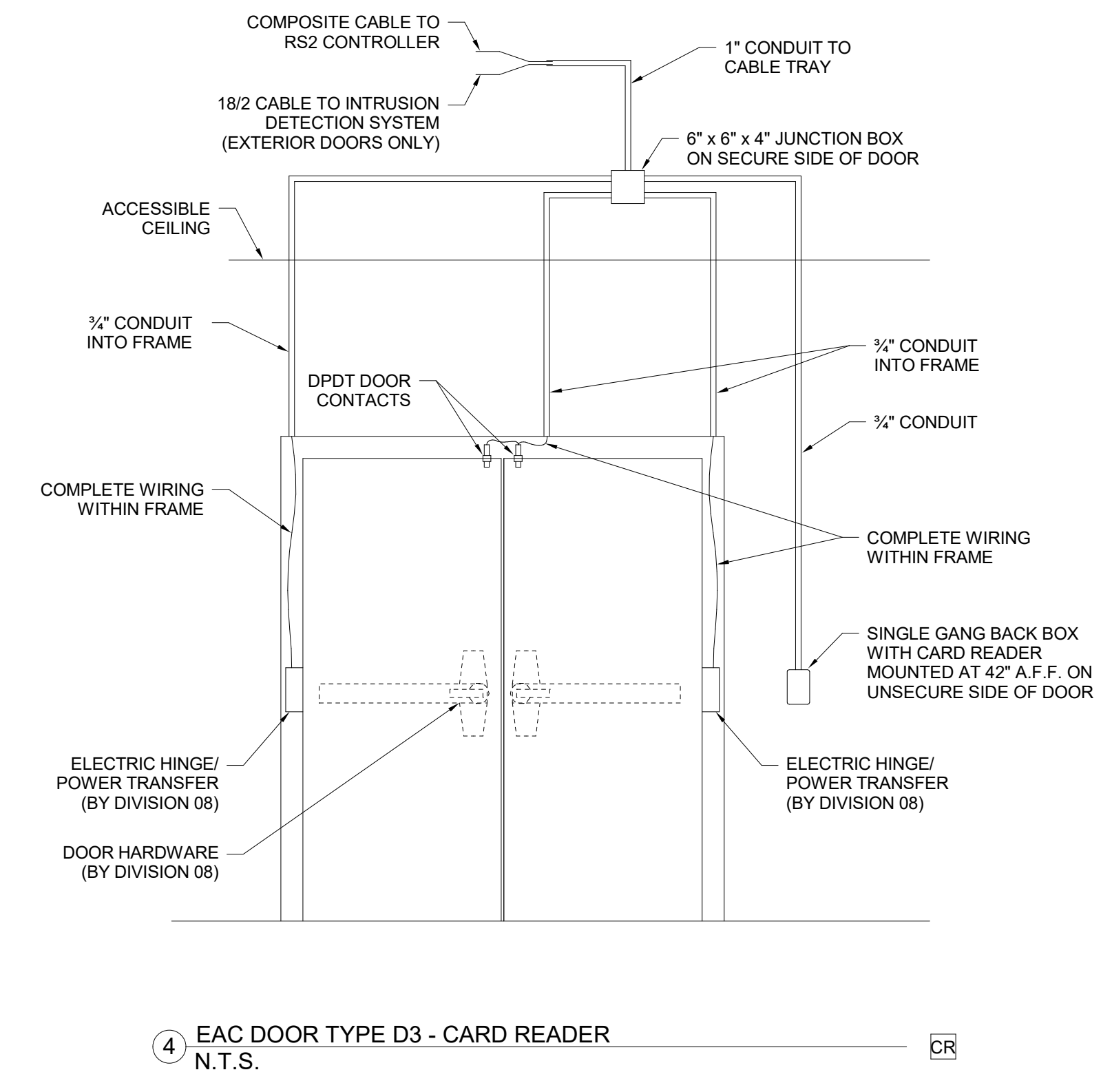
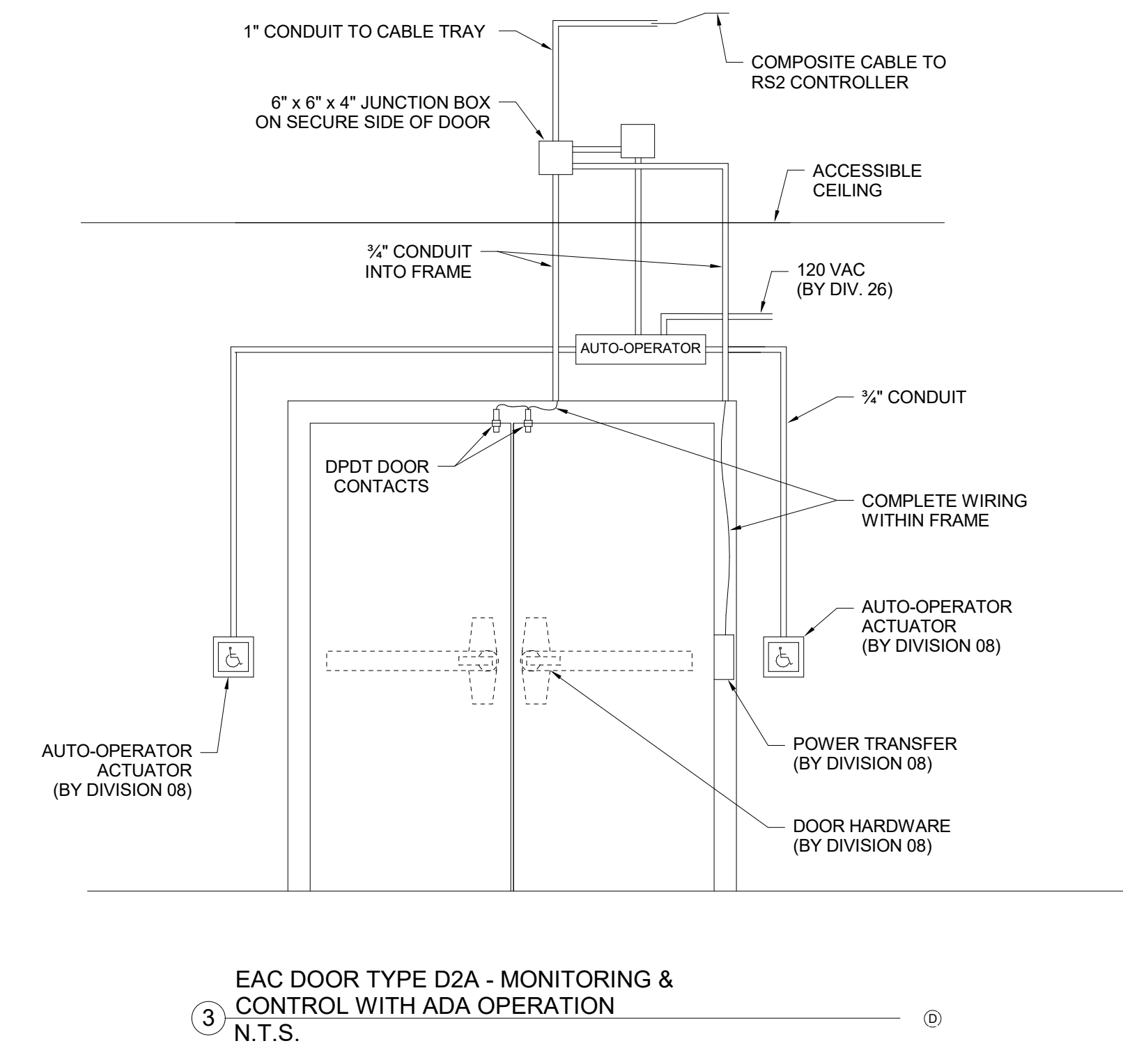
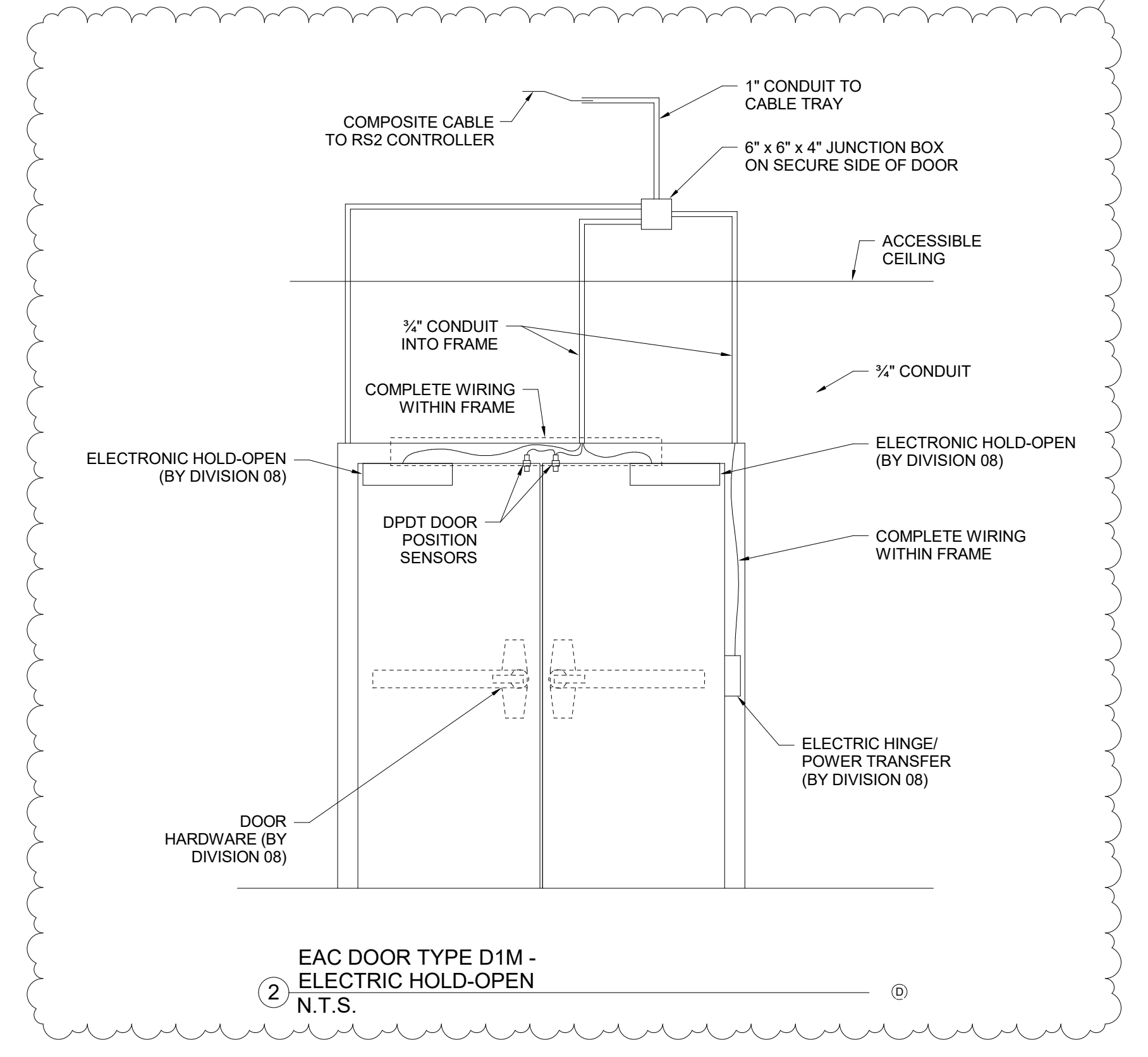
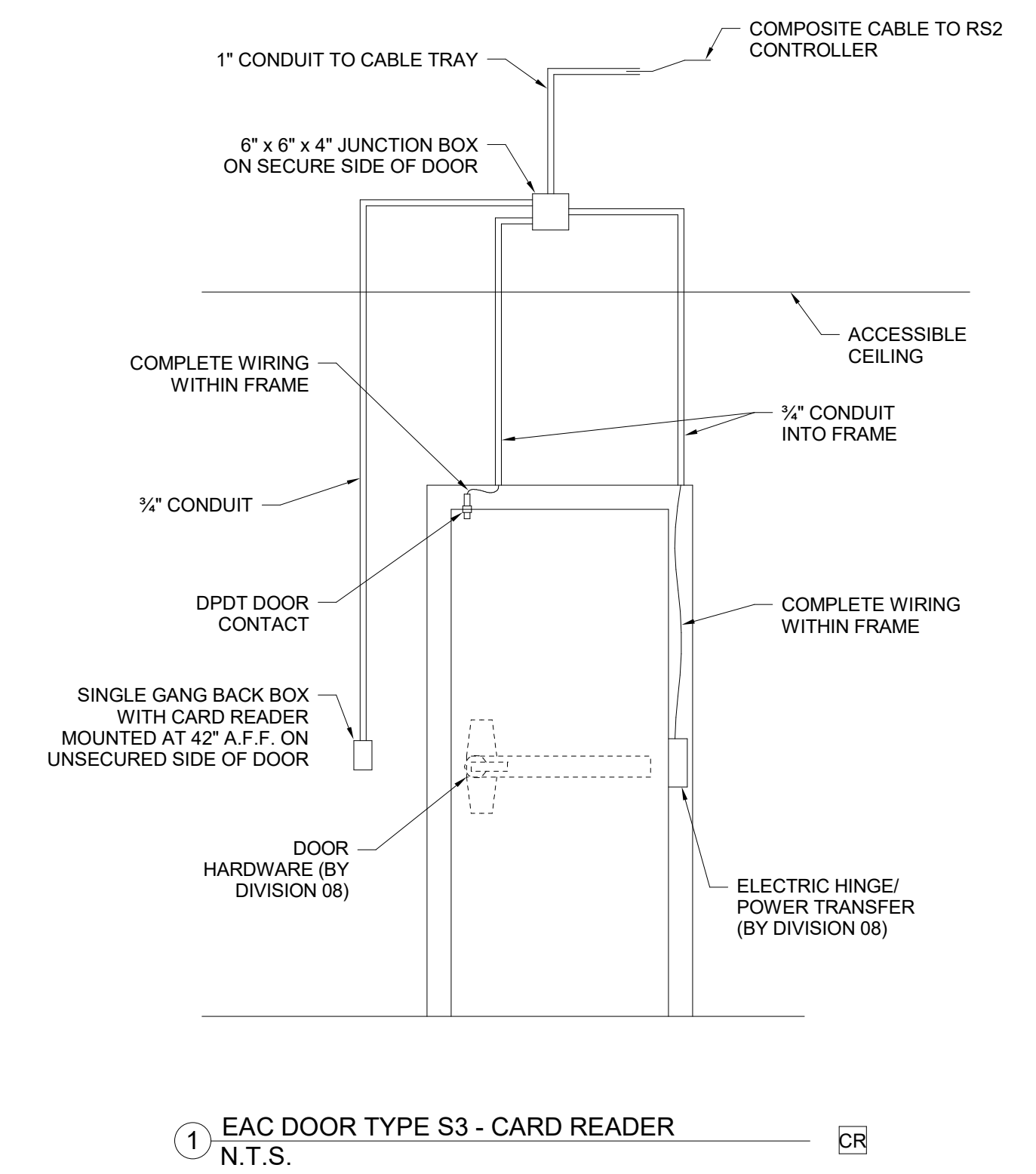


**WASHINGTON TOWNSHIP SCHOOLS**

**SERVICE CENTER RENOVATION - PHASE 6B**

SECURITY DETAILS

T407



6

5

4

3

2

1

ROOM NUMBER	LABEL	TELECOM ROOM	DATA PORTS	COMMENTS
A102	00-01	00	1	BAS DATA LOCATION
A111	00-02	00	1	BAS DATA LOCATION
B226	00-03	00	1	CLOCK LOCATION - SURFACE MOUNTED
C100	00-04	00	1	CLOCK LOCATION - SURFACE MOUNTED
C101	00-05	00	1	DATA LOCATION - FLUSH MOUNTED
C101	00-06	00	1	DATA LOCATION - FLUSH MOUNTED
C101	00-07	00	1	CLOCK LOCATION - SURFACE MOUNTED
C101	00-08	00	1	DATA LOCATION - SURFACE MOUNTED
C101	00-09	00	1	WIRELESS ACCESS POINT - CEILING MOUNTED
C101	00-10	00	1	CLOCK LOCATION - SURFACE MOUNTED
C101	00-11	00	1	DATA LOCATION - SURFACE MOUNTED
C101A	00-12	00	1	CLOCK LOCATION - SURFACE MOUNTED
C101A	00-13	00	1	DATA LOCATION - SURFACE MOUNTED
C101A	00-14	00	1	DATA LOCATION - SURFACE MOUNTED
C101A	00-15	00	1	DATA LOCATION - SURFACE MOUNTED
C101B	00-16	00	1	DATA LOCATION - SURFACE MOUNTED
C101B	00-17	00	1	DATA LOCATION - SURFACE MOUNTED
C101B	00-18	00	1	CLOCK LOCATION - SURFACE MOUNTED
EXT	00-19	00	1	SECURITY CAMERA - POLE MOUNTED
Grand total			19	

DOOR NUMBER	LABEL	TELECOM ROOM	COMMENTS
A121	A121-CR	00	EAC DOOR TYPE D3
CA000	CA000-DPS	00	EAC DOOR TYPE D1M

ROOM NUMBER	LABEL	TELECOM ROOM	DATA PORTS	COMMENTS
B213	05-A-D1	05	1	BAS DATA LOCATION
Grand total			1	

ROOM NUMBER	LABEL	TELECOM ROOM	DATA PORTS	COMMENTS
B208	06-A-D1	06	1	BAS DATA LOCATION
C101	06-A-D2	06	1	SECURITY CAMERA - CEILING MOUNTED
Grand total			2	

DOOR NUMBER	LABEL	TELECOM ROOM	COMMENTS
BC200	BC200-DPS	06	EAC DOOR TYPE D1M

ROOM NUMBER	LABEL	TELECOM ROOM	DATA PORTS	COMMENTS
B101	01-A-D1	01	1	DATA LOCATION - SURFACE MOUNTED
B101	01-A-D2	01	1	CLOCK LOCATION - SURFACE MOUNTED
B101	01-A-D3	01	1	WIRELESS ACCESS POINT - CEILING MOUNTED
B101	01-A-D4	01	1	CLOCK LOCATION - SURFACE MOUNTED
B101	01-A-D5	01	1	ROOM SCHEDULER LOCATION - SURFACE MOUNTED
B102	01-A-D6	01	1	MONITOR LOCATION - FLUSH MOUNTED
B102	01-A-D7	01	1	CLOCK LOCATION - SURFACE MOUNTED
B103	01-A-D8	01	2	BAS DATA LOCATION
B103A	01-A-D10	01	1	DATA LOCATION - SURFACE MOUNTED
B103A	01-A-D11	01	1	CLOCK LOCATION - SURFACE MOUNTED
B103C	01-A-D12	01	1	DATA LOCATION - FLUSH MOUNTED
B103E	01-A-D13	01	1	DATA LOCATION - SURFACE MOUNTED
B103F	01-A-D14	01	1	DATA LOCATION - SURFACE MOUNTED
B103F	01-A-D15	01	1	CLOCK LOCATION - SURFACE MOUNTED
B103G	01-A-D16	01	1	CLOCK LOCATION - SURFACE MOUNTED
B103G	01-A-D17	01	1	MONITOR LOCATION - SURFACE MOUNTED
B103G	01-A-D18	01	1	DATA LOCATION - SURFACE MOUNTED
B103G	01-A-D19	01	1	MONITOR LOCATION - SURFACE MOUNTED
B103G	01-A-D20	01	1	MONITOR LOCATION - SURFACE MOUNTED
B103G	01-A-D21	01	4	DATA LOCATION - SURFACE MOUNTED
B103H	01-A-D22	01	1	WALL PHONE LOCATION - SURFACE MOUNTED
B103J	01-A-D26	01	1	DATA LOCATION - SURFACE MOUNTED
B103J	01-A-D27	01	1	CLOCK LOCATION - SURFACE MOUNTED
B103K	01-A-D28	01	1	DATA LOCATION - SURFACE MOUNTED
B103L	01-A-D29	01	1	DATA LOCATION - SURFACE MOUNTED
B104	01-A-D30	01	1	DATA LOCATION - SURFACE MOUNTED
B104	01-A-D31	01	1	WIRELESS ACCESS POINT - CEILING MOUNTED
B104	01-A-D32	01	1	SHORT THROW PROJECTOR LOCATION
B104	01-A-D33	01	1	SHORT THROW PROJECTOR LOCATION
B105A	01-A-D34	01	1	DATA LOCATION - SURFACE MOUNTED
B105A	01-A-D35	01	1	DATA LOCATION - SURFACE MOUNTED
B105A	01-A-D36	01	2	DATA LOCATION - SURFACE MOUNTED
B105B	01-A-D37	01	1	DATA LOCATION - SURFACE MOUNTED
B105C	01-A-D39	01	1	DATA LOCATION - SURFACE MOUNTED
B105F	01-A-D40	01	1	DATA LOCATION - SURFACE MOUNTED
B105H	01-A-D41	01	1	DATA LOCATION - SURFACE MOUNTED
B105H	01-A-D42	01	1	CLOCK LOCATION - SURFACE MOUNTED
B105J	01-A-D43	01	1	DATA LOCATION - SURFACE MOUNTED
B105J	01-A-D44	01	1	MONITOR LOCATION - SURFACE MOUNTED
B107	01-A-D45	01	1	DUAL SIDE CLOCK - SURFACE MOUNTED
B107	01-A-D46	01	1	ROOM SCHEDULER LOCATION - SURFACE MOUNTED
B107	01-A-D47	01	1	CLOCK LOCATION - SURFACE MOUNTED
B107	01-A-D48	01	1	SECURITY CAMERA - REINSTALLED EXISTING SINGLE SENSOR
B110	01-B-D1	01	1	DATA LOCATION - SURFACE MOUNTED
B110	01-B-D2	01	1	DATA LOCATION - SURFACE MOUNTED
B110	01-B-D3	01	1	DATA LOCATION - SURFACE MOUNTED
B110	01-B-D4	01	1	CLOCK LOCATION - SURFACE MOUNTED
B110	01-B-D5	01	1	CLOCK LOCATION - SURFACE MOUNTED
B110	01-B-D6	01	1	DATA LOCATION - SURFACE MOUNTED
B115	01-B-07D8	01	2	BAS DATA LOCATION
B225	01-B-09	01	1	SECURITY CAMERA - CEILING MOUNTED
B225	01-B-10	01	1	SECURITY CAMERA - CEILING MOUNTED
B225	01-B-11	01	1	DUAL SIDE CLOCK - SURFACE MOUNTED
B226	01-B-12	01	1	SECURITY CAMERA - CEILING MOUNTED
B226	01-B-13	01	1	SECURITY CAMERA - CEILING MOUNTED
B226	01-B-14	01	1	SECURITY CAMERA - CEILING MOUNTED
B226	01-B-15	01	1	SECURITY CAMERA - CEILING MOUNTED
B226	01-B-16	01	1	SECURITY CAMERA - CEILING MOUNTED
B226	01-B-17	01	1	CLOCK LOCATION - SURFACE MOUNTED
B226	01-B-18	01	1	WIRELESS ACCESS POINT - CEILING MOUNTED
B226	01-B-19	01	1	CLOCK LOCATION - SURFACE MOUNTED
B226	01-B-20	01	1	CLOCK LOCATION - SURFACE MOUNTED
B226	01-B-21	01	1	SECURITY CAMERA - CEILING MOUNTED
B226	01-B-22	01	1	BAS DATA LOCATION
B226	01-B-23	01	1	BAS DATA LOCATION
C001	01-B-24	01	1	DATA LOCATION - SURFACE MOUNTED
C001	01-B-25	01	1	BAS DATA LOCATION
C001	01-B-26	01	1	BAS DATA LOCATION
C002	01-B-27	01	1	BAS DATA LOCATION
C101	01-B-28	01	1	SECURITY CAMERA - CEILING MOUNTED
C101	01-B-29	01	1	SECURITY CAMERA - CEILING MOUNTED
C101	01-B-30	01	1	SECURITY CAMERA - CEILING MOUNTED
C101	01-B-31	01	1	SECURITY CAMERA - CEILING MOUNTED
C102H	01-B-32	01	1	DATA LOCATION - SURFACE MOUNTED
C109H	01-B-33	01	1	BAS DATA LOCATION
C200	01-B-34	01	1	SECURITY CAMERA - CEILING MOUNTED
C200	01-B-35	01	1	CLOCK LOCATION - SURFACE MOUNTED
C200	01-B-36	01	1	CLOCK LOCATION - SURFACE MOUNTED
C200	01-B-37	01	1	CLOCK LOCATION - SURFACE MOUNTED
C200	01-B-38	01	1	WIRELESS ACCESS POINT - CEILING MOUNTED
C200	01-B-39	01	1	DATA LOCATION - FLUSH MOUNTED
C200	01-B-40	01	1	MONITOR LOCATION - FLUSH MOUNTED
C200	01-B-D41/D42	01	2	DATA LOCATION - FLUSH MOUNTED
C200	01-B-D43/D44	01	2	DATA LOCATION - FLUSH MOUNTED
C200	01-B-D45	01	1	DATA LOCATION - FLUSH MOUNTED
C200	01-B-D46	01	1	WIRELESS ACCESS POINT - CEILING MOUNTED
C200	01-B-D47	01	1	DATA LOCATION - FLUSH MOUNTED
C200	01-B-D48	01	1	MONITOR LOCATION - FLUSH MOUNTED
C200	01-C-D1	01	1	DATA LOCATION - FLUSH MOUNTED
C200	01-C-D2	01	1	CLOCK LOCATION - SURFACE MOUNTED
C200	01-C-D3	01	1	CLOCK LOCATION - SURFACE MOUNTED
C200	01-C-D4	01	1	SECURITY CAMERA - REINSTALLED EXISTING SINGLE SENSOR
C200	01-C-D5/D6	01	2	PROJECTOR LOCATION
C200	01-C-D7/D8	01	2	PROJECTOR LOCATION
C200	01-C-D9	01	1	SECURITY CAMERA - REINSTALLED EXISTING SINGLE SENSOR
C200	01-C-D10	01	1	SECURITY CAMERA - REINSTALLED EXISTING SINGLE SENSOR
C200	01-C-D11	01	1	SECURITY CAMERA - REINSTALLED EXISTING SINGLE SENSOR
C200	01-C-D12	01	2	BAS DATA LOCATION
C205	01-C-D13	01	1	DATA LOCATION - FLUSH MOUNTED
C206	01-C-D14	01	1	DATA LOCATION - FLUSH MOUNTED
C207	01-C-D15	01	1	DATA LOCATION - FLUSH MOUNTED
C207	01-D-D8	01	1	BAS DATA LOCATION
C208	01-C-D16/D17/D18/D19	01	4	DATA LOCATION - FLUSH MOUNTED
C209	01-C-D20	01	1	DATA LOCATION - SURFACE MOUNTED
C210	01-C-D21	01	1	DATA LOCATION - FLUSH MOUNTED
C211	01-C-D22	01	1	DATA LOCATION - FLUSH MOUNTED
C213	01-C-D23	01	1	DATA LOCATION - FLUSH MOUNTED
D100	01-C-D24	01	1	CLOCK LOCATION - SURFACE MOUNTED
D100	01-C-D25	01	1	DATA RE-CABLE LOCATION
D100	01-C-D26	01	1	DATA LOCATION - SURFACE MOUNTED
D102	01-C-D27	01	1	BAS DATA LOCATION
D102	01-C-D28	01	2	BAS DATA LOCATION
D106	01-C-D29	01	1	WIRELESS ACCESS POINT - CEILING MOUNTED
D106	01-C-D30	01	1	DATA RE-CABLE LOCATION
D106	01-C-D31	01	1	CLOCK LOCATION - SURFACE MOUNTED
D106A	01-C-D32	01	1	DATA LOCATION - SURFACE MOUNTED
D108	01-C-D33	01	1	CLOCK LOCATION - SURFACE MOUNTED
D108	01-C-D34	01	1	WIRELESS ACCESS POINT - CEILING MOUNTED
D108	01-C-D35/D36	01	2	DATA LOCATION - SURFACE MOUNTED
D108	01-C-D37/D38	01	2	DATA LOCATION - SURFACE MOUNTED
D108	01-C-D39/D40	01	2	DATA LOCATION - SURFACE MOUNTED
D108	01-C-D41/D42	01	2	DATA LOCATION - SURFACE MOUNTED
D108A	01-C-D43	01	1	DATA RE-CABLE LOCATION
D110	01-C-D44	01	1	SECURITY CAMERA - CEILING MOUNTED
D110	01-C-D45	01	1	DUAL SIDE CLOCK - SURFACE MOUNTED
D110	01-C-D46	01	1	BAS DATA LOCATION
D110	01-C-D47	01	1	BAS DATA LOCATION
EXT	01-C-D48	01	1	SECURITY CAMERA - WALL MOUNTED
EXT	01-D-D1	01	1	VIDEO INTERCOM DOOR STATION
EXT	01-D-D2	01	1	SECURITY CAMERA - POLE MOUNTED
EXT	01-D-D3	01	1	SECURITY CAMERA - MOUNT UNDER AWNING BULKHEAD
EXT	01-D-D4	01	1	SECURITY CAMERA - WALL MOUNTED 6' BELOW TOP OF BRICK
V100	01-D-D5	01	1	SECURITY CAMERA - CEILING MOUNTED
V100	01-D-D6	01	1	VIDEO INTERCOM DOOR STATION
V100	01-D-D7	01	1	DATA LOCATION - SURFACE MOUNTED
Grand total			154	

ROOM NUMBER	LABEL	TELECOM ROOM	DATA PORTS	COMMENTS
B117	02-A-D1	02	1	BAS DATA LOCATION
CA002	02-A-D2	02	1	SECURITY CAMERA - CEILING MOUNTED
CA002	02-A-D3	02	1	SECURITY CAMERA - CEILING MOUNTED
CA002	02-A-D4	02	1	SECURITY CAMERA - REINSTALLED EXISTING SINGLE SENSOR
CA002	02-A-D5	02	1	DUAL SIDE CLOCK - SURFACE MOUNTED
EX	02-A-D6	02	1	VIDEO INTERCOM DOOR STATION
EXT	02-A-D7	02	1	SECURITY CAMERA - WALL MOUNTED
EXT	02-A-D8	02	1	SECURITY CAMERA - WALL MOUNTED 6' BELOW TOP OF BRICK
F100	02-A-D9	02	2	PROJECTOR LOCATION
F100	02-A-D10/D11/D12	02	2	PROJECTOR LOCATION
F100	02-A-D13	02	1	WIRELESS ACCESS POINT - CEILING MOUNTED
F100	02-A-D14	02	1	WIRELESS ACCESS POINT - CEILING MOUNTED
F100	02-A-D15	02	1	CLOCK LOCATION - SURFACE MOUNTED
F100	02-A-D16	02	1	DATA LOCATION - SURFACE MOUNTED
F100	02-A-D17	02	1	SECURITY CAMERA - REINSTALLED EXISTING SINGLE SENSOR
F100	02-A-D18	02	1	SECURITY CAMERA - NEW MULTI-SENSOR
F101	02-A-D19	02	1	CLOCK LOCATION - SURFACE MOUNTED
F101	02-A-D20	02	1	SHORT THROW PROJECTOR LOCATION
F101	02-A-D21	02	1	WIRELESS ACCESS POINT - CEILING MOUNTED
F101	02-A-D22	02	1	WALL PHONE LOCATION - SURFACE MOUNTED
F101	02-A-D23	02	1	DATA LOCATION - SURFACE MOUNTED
F102	02-A-D24	02	1	DATA LOCATION - FLUSH MOUNTED
F102	02-A-D25	02	1	WALL PHONE LOCATION - SURFACE MOUNTED
F102	02-A-D26	02	1	WIRELESS ACCESS POINT - CEILING MOUNTED
F102	02-A-D27	02	1	SHORT THROW PROJECTOR LOCATION
F102	02-A-D28	02	1	CLOCK LOCATION - SURFACE MOUNTED
F103	02-A-D29	02	1	CLOCK LOCATION - SURFACE MOUNTED
F103	02-A-D30	02	1	SHORT THROW PROJECTOR LOCATION
F103	02-A-D31	02	1	WIRELESS ACCESS POINT - CEILING MOUNTED
F103	02-A-D32	02	1	DATA LOCATION - SURFACE MOUNTED
F103	02-A-D33	02	1	WALL PHONE LOCATION - SURFACE MOUNTED
F103	02-A-D34	02	1	CLOCK LOCATION - SURFACE MOUNTED
F104	02-A-D35	02	1	SHORT THROW PROJECTOR LOCATION
F104	02-A-D36	02	1	DATA LOCATION - SURFACE MOUNTED
F104	02-A-D37	02	1	WALL PHONE LOCATION - SURFACE MOUNTED
F104	02-A-D38	02	1	WIRELESS ACCESS POINT - CEILING MOUNTED
F105	02-A-D39	02	1	CLOCK LOCATION - SURFACE MOUNTED
F105	02-A-D40	02	1	SHORT THROW PROJECTOR LOCATION
F105	02-A-D41	02	1	WIRELESS ACCESS POINT - CEILING MOUNTED
F105	02-A-D42	02	1	DATA LOCATION - SURFACE MOUNTED
F105	02-A-D43	02	1	WALL PHONE LOCATION - SURFACE MOUNTED
F105	02-A-D44	02	1	CLOCK LOCATION - SURFACE MOUNTED
F107	02-A-D45	02	1	SHORT THROW PROJECTOR LOCATION
F107	02-A-D46	02	1	WIRELESS ACCESS POINT - CEILING MOUNTED
F107	02-A-D47	02	1	DATA LOCATION - SURFACE MOUNTED
F107	02-A-D48	02	1	WALL PHONE LOCATION - SURFACE MOUNTED
F108	02-B-D1	02	1	CLOCK LOCATION - SURFACE MOUNTED
F108	02-B-D2	02	1	DATA LOCATION - SURFACE MOUNTED
F109	02-B-D3	02	1	CLOCK LOCATION - SURFACE MOUNTED
F109	02-B-D4	02	1	WIRELESS ACCESS POINT - CEILING MOUNTED
F109	02-B-D5	02	1	DATA LOCATION - SURFACE MOUNTED
F109	02-B-D6	02	1	WALL PHONE LOCATION - SURFACE MOUNTED
F109	02-B-D7	02	1	SHORT THROW PROJECTOR LOCATION
G100B	02-B-D8	02	1	CLOCK LOCATION - SURFACE MOUNTED
G101	02-B-D9	02	1	DATA LOCATION - SURFACE MOUNTED
G101	02-B-D10	02	1	WALL PHONE LOCATION - SURFACE MOUNTED
G101	02-B-D11	02	1	MONITOR LOCATION - FLUSH MOUNTED
G102	02-B-D12	02	1	CLOCK LOCATION - SURFACE MOUNTED
G102	02-B-D13	02	1	WIRELESS ACCESS POINT - CEILING MOUNTED
G102	02-B-D14	02	1	SHORT THROW PROJECTOR LOCATION
G102	02-B-D15	02	1	CLOCK LOCATION - SURFACE MOUNTED
G102	02-B-D16	02	1	WALL PHONE LOCATION - SURFACE MOUNTED
G103	02-B-D17	02	1	WIRELESS ACCESS POINT - CEILING MOUNTED
G103	02-B-D18	02	1	CLOCK LOCATION - SURFACE MOUNTED
G103	02-B-D19	02	1	WALL PHONE LOCATION - SURFACE MOUNTED
G103	02-B-D20	02	1	DATA LOCATION - SURFACE MOUNTED
G103	02-B-D21	02	1	SHORT THROW PROJECTOR LOCATION
G104	02-B-D22	02	1	WIRELESS ACCESS POINT - CEILING MOUNTED
G104	02-B-D23	02	1	SHORT THROW PROJECTOR LOCATION
G104	02-B-D24	02	1	WALL PHONE LOCATION - SURFACE MOUNTED
G104	02-B-D25	02	1	DATA LOCATION - SURFACE MOUNTED
G104	02-B-D26	02	1	