

**ADDENDUM
NO. 2**

October 22, 2024

Carmel Clay School District Witsken Tennis Complex Renovations
520 E. Main Street
Carmel, IN 46032

TO: ALL BIDDERS OF RECORD

This Addendum forms a part of and modifies the Bidding Requirements, Contract Forms, Contract Conditions, the Specifications and the Drawings dated September 19, 2024, by Fanning/Howey. Acknowledge receipt of the Addendum in the space provided on the Bid Form. Failure to do so may subject the Bidder to disqualification.

This Addendum consists of Page ADD 2-1 and attached Fanning/Howey Addendum No. 2 dated October 21, 2024, consisting of 1 page, Revised Drawing Sheet G1.00, and New Drawing Sheet G1.02.

ADDENDUM NO. 2

Carmel High School – Witsken Tennis Complex Renovations

Carmel Clay Schools
Carmel, Indiana

Project No. 224063.00

Index of Contents

Addendum No. 2, 3 items, 1 page
New Drawing Sheet: G1.02 – PTC Paving Plan
Revised Drawing Sheet: G1.00

October 21, 2024

FANNING/HOWEY ASSOCIATES, INC.
ARCHITECTS/ENGINEERS/CONSULTANTS

TO: ALL BIDDERS OF RECORD

ADDENDUM NO. 2 to Drawings and Project Manual, dated August 30, 2024, for the Carmel High School – Witsken Tennis Complex Renovations for Carmel Clay Schools, 5201 E. Main St., Carmel, Indiana 46033; as prepared by Fanning/Howey Associates, Inc., Indianapolis, Indiana.
This Addendum shall hereby be and become a part of the Contract Documents the same as if originally bound thereto.

The following clarifications, amendments, additions, revisions, changes, and modifications change the original Contract Documents only in the amount and to the extent hereinafter specified in this Addendum.

Each bidder shall acknowledge receipt of this Addendum in his proposal or bid.

NOTE: Bidders are responsible for becoming familiar with every item of this Addendum. (This includes miscellaneous items at the very end of this Addendum.)

RE: ALL BIDDERS

ITEM NO. 1. SHEET E2.01 – ELECTRICAL SITE PLAN

- A. Keynote no. 19: After the wording “Cable”, add “6—Strand ~~multi-mode~~”. **multi-mode**

ITEM NO. 2. NEW DRAWING SHEET

- B. Drawing Sheet No: G1.02 – PTC Paving Plan is included with and hereby made a part of this Addendum.

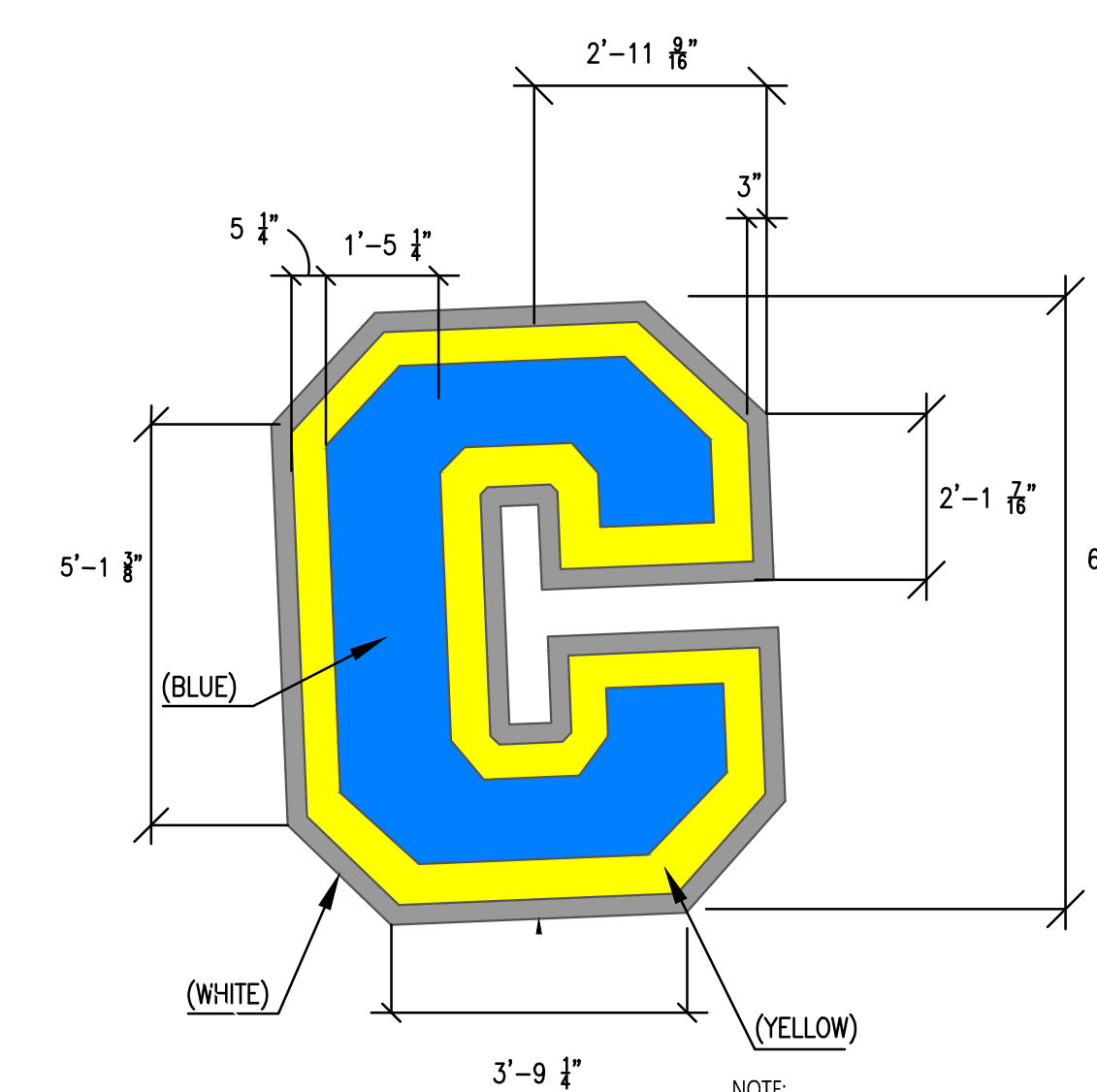
ITEM NO. 3. REVISED DRAWING SHEET

- A. Drawing Sheet: G1.00 has been revised, dated 10/21/24, and is included with and hereby made a part of this Addendum. This Drawing supersedes the original documents.

END OF ADDENDUM



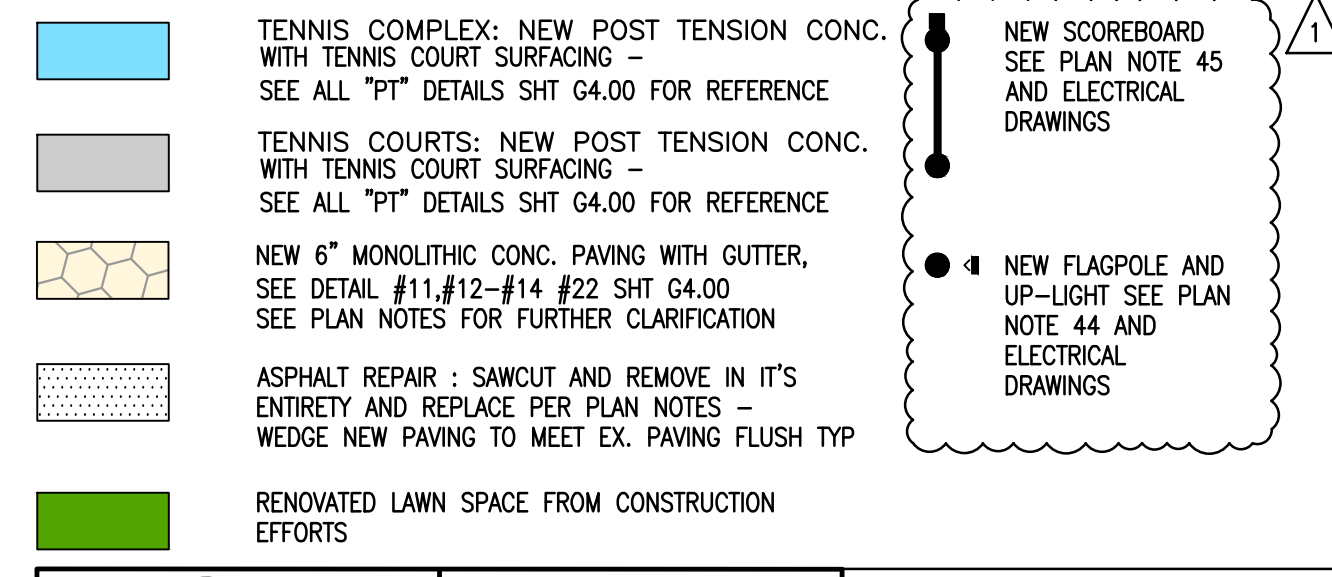
ENLARGED "C" LOGO



PLAN NOTES

- TENNIS COURT SURFACING: PLAYING SURFACE (GRAY) FROM MANUFACTURER STANDARD COLORS. REFER TO PROJECT MANUAL 31 28 TENNIS COURT SURFACING. SEE DETAIL #19 SHT G4.00 FOR COURT LAYOUT TYP - SEE LAYOUT FOR COURT NUMBERING TO BE PLACED AT EACH COURT IN NUMERICAL ORDER, STARTING AT NORTHWEST COURT AND WORKING EAST - LEFT TO RIGHT - NORTH TO SOUTH
- TENNIS COURT SURFACING: PERIMETER COLOR (BLUE) FROM MANUFACTURER STANDARD COLORS. REFER TO PROJECT MANUAL 31 28 TENNIS COURT SURFACING. PREPARE ALL NEW AND EXISTING PFC SURFACES TO RECEIVE TENNIS COURT SURFACING AND APPLY TENNIS COURT SURFACING PER PT MANUF. / SYNTHETIC TENNIS COURT SURFACING MANUF. WRITTEN RECOMMENDATIONS - SEE DETAIL #19 SHT G4.00
- COURT LINES (WHITE); 2" WIDE LAYOUT PER NFHS AND US TENNIS REGULATIONS TYP. REFER TO DETAIL #19 ON G4.00 AND THE PROJECT MANUAL 31 28 TENNIS COURT SURFACING. SAWCUT JOINT TYP PER PT MANUF. GUIDELINES ALONG NET LINE AND BETWEEN INDIVIDUAL COURTS - IF FOUND TO BE WARRANTED BY PT MANUF. DEPTH OF CUT AS RECOMMENDED BY POST TENSION CONC. MANUFACTURER GUIDELINES. SEAL JOINT WITH PAINTABLE SEALANT MEETING THE REQUIREMENTS OF THE TENNIS COURT SURFACING MANUFACTURER GUIDELINES. SAWCUT AND SEALING OPERATION TO BE COMPLETED BEFORE COLOR SYSTEM INSTALLATION - REFER TO PROJECT MANUAL 31 28 UNBOUND POST TENSIONED CONC. - SEE DETAIL #19 SHT G4.00
- NEW 10" HIGH CHAIN LINK FENCING - CLASS 28 - THERMALLY INFUSED; 5" TERMINAL GATE POST AND 3" LINE POSTS; 1" 34" FABRIC; TOP AND BOTTOM RAILS; ALL MATERIAL IS TO BE BLACK VINYL. SEE DETAILS #16-SHT G4.00. CONTRACTOR IS TO PROTECT ALL NEW POST AND RAILS WITH COVERINGS DURING INSTALL TO PREVENT SCUFFING AND OR DAMAGE TO FENCE COATING - ALL DAMAGED MEMBERS ARE TO BE REPLACED IN ITS ENTIRETY PRIOR TO THE COMPLETION OF CONSTRUCTION.
- NEW 8" OR 10" WIDE (SEE PLAN) X 8" 0" TALL DOUBLE WIDE MAN GATES - CLASS 28 - THERMALLY FUSED - SEE DETAILS #16-17 AND #21 SHT G4.00 - DETAIL #14-2 SHT G4.01 FOR CUSTOM GATE SIGNS - PROVIDE STANDARD 12"X14" HIGH SIGNS WITH BAY LETTERING AND GRAPHICS TO MATCH SCHOOL COLORS AND BRANDING GUIDELINES - CONTRACTOR IS TO OBTAIN APPROVED LOGO GRAPHIC FROM OWNER AND COORDINATE AND SUBMIT SIGN LAYOUTS WITH ARCHITECT / OWNER PRIOR TO THE START OF CONSTRUCTION. CONTRACTOR IS TO PROTECT ALL NEW POST AND RAILS WITH COVERINGS DURING INSTALL TO PREVENT SCUFFING AND OR DAMAGE TO FENCE COATING - ALL DAMAGED MEMBERS ARE TO BE REPLACED IN ITS ENTIRETY PRIOR TO THE COMPLETION OF CONSTRUCTION.
- NEW 4" WIDE X 8" 0" TALL SINGLE WIDE MAN GATES - CLASS 28 - THERMALLY FUSED - SEE DETAILS #16-17 AND DETAIL #20 SHT G4.00 - DETAIL #14-2 SHT G4.01 FOR GATE DETAIL. PROVIDE CUSTOM GATE SIGNS - PROVIDE STANDARD 12"X14" HIGH SIGNS WITH BAY LETTERING AND GRAPHICS TO MATCH SCHOOL COLORS AND BRANDING GUIDELINES - CONTRACTOR IS TO OBTAIN APPROVED LOGO GRAPHIC FROM OWNER AND COORDINATE AND SUBMIT SIGN LAYOUTS WITH ARCHITECT / OWNER PRIOR TO THE START OF CONSTRUCTION. CONTRACTOR IS TO PROTECT ALL NEW POST AND RAILS WITH COVERINGS DURING INSTALL TO PREVENT SCUFFING AND OR DAMAGE TO FENCE COATING - ALL DAMAGED MEMBERS ARE TO BE REPLACED IN ITS ENTIRETY PRIOR TO THE COMPLETION OF CONSTRUCTION.
- NEW TENNIS NET POSTS AND FOOTINGS AND ANCHOR (28 TOTAL); BLACK POWDER COATED NET POST - PROVIDE NEW NET POST AND ACCESSORIES AND ANCHORS - TENNIS BALL HOLDERS (28) - SCOREBOARD HOLDERS (28) - SEE DETAILS #9 ON SHEET G4.0 AND DETAIL #19 SHT G4.01. REFER TO PROJECT MANUAL 11 68 33 ATHLETIC FIELD EQUIPMENT. ADJUST POST HEIGHTS TO MEET REQUIRED NET HEIGHT PER NFHS AND US TENNIS ASSOCIATION STANDARDS.
- NEW GRANDSTANDS (13 TOTAL); 4 ROW AT GRADE BLEACHERS - BASILINE SERIES (BASIS OF DESIGN) - PROVIDE 2" X 10" ANODIZED SEAT PLANKS, SINGLE (1) 2" X 10" MILL FINISH FOOT PLANKS ON ROW 2-3 AND DOUBLE (2) 2" X 10" FOOT PLANKS AND RISERS PLANKS ON ROW 4 AND ABOVE. GRANDSTANDS ARE TO HAVE TOP AND BACK AND SIDE CHAIN-LINK FENCING (12 TOTAL) - 14" X 4 1/2" WIDE MAX BY 27 LONG. IBC COMPLIANT. ALUMINUM PLANKS AND FRAMES; CHAIN-LINK GUARDRAIL SYSTEM. DOUBLE FOOTBOARDS GRANDSTAND - SEATING AND FENCING. SECURE NEW GRANDSTANDS TO NEW CONC. PAVING PER MANUF. WRITTEN RECOMMENDATIONS AND PER MANUF. CONSTRUCTION DETAILS.
- TYP. EX. ASPHALT PAVING AND PAVEMENT MARKINGS TO REMAIN - PROTECT DURING CONSTRUCTION
- NEW UNDER-DRAIN SYSTEM AND AGGREGATE BASE COURSE UNDER NEW PT TENSION CONC. PAVING AND SECTIONS OF HEAVY DUTY CONC. PAVING AS SHOWN WITHIN SHT G2.00. SEE SHT G2.00 FOR FURTHER INFORMATION.
- TREE PROTECTION FENCING - SEE F / S12.2 DRAWINGS FOR TREE PROTECTION DETAIL AND FOR FURTHER INFORMATION.
- NEW CENTER COURT NETTIE DOWN HARDWARE AND CONCRETE FOOTING (14); REFER TO DETAIL #43 SHT G4.00
- NEW NETS (14 TOTAL); DOUGLAS TN-30 TENNIS NET WITH CENTER STRAP (BASIS OF DESIGN) - NETS ARE TO BE INSTALLED PER MANUF. WRITTEN INSTRUCTIONS - SPORTS FIELD SPECIALTIES - BASIS OF DESIGN
- TENNIS COURT LAYOUT; SEE DETAIL #19 G4.00
- NOT USED
- EX. DRAINAGE STRUCTURES NOT NOTED FOR NEW WORK - MARKED OR NOT - TO REMAIN - PROTECT DURING CONSTRUCTION. REFER TO D AND SURVEY
- NEW TRENCH DRAIN - INSTALL ACCO 8" POLYMER CONCRETE, K5200 TRENCH DRAIN WITH PERFORATED STAINLESS STEEL GRATE INSTALLED IN LOCATIONS AS NOTED - PER MANUF. WRITTEN INSTRUCTIONS - SEE DETAIL #6 SHT G4.00 FOR STANDARD INSTALL AND S11-1 - PROVIDE EXPANSION JOINT AROUND ALL SIZES OF NEW TRENCH DRAIN AND NEW CONC. INTERSECT
- NEW POST TENSION CONC. SURFACE WITH TENSIONING CABLES - CABLES ARE TO BE CONFIGURED INTO A SPECIFIED GRID LAYOUT AND STRESSED TO THE APPROPRIATE LEVELS - WHICH IS TO BE SPECIFIED BY MANUF. PRIOR TO THE START OF CONSTRUCTION. CONTRACTOR IS TO TREAT AND PREP EX. CONC. AND ASPHALT SURFACES AS NEEDED PRIOR TO INSTALLATION OF NEW PT SLAB. SEE ALL "PT" DETAILS AND #1-6 & #7-9 SHT G4.00 FOR FURTHER INFORMATION.
- EX. DUMPSTER ENCLOSURE TO REMAIN - PROTECT DURING CONSTRUCTION
- NEW MONOLITHIC 6" REINFORCED CONC. WALKS - INSTALL PER DETAILS #11-14 SHT G4.00 AND MANUF. WRITTEN RECOMMENDATION
- NEW FRENCH DRAINS; INSTALL FRENCH DRAINS WITH PERFORATED 4" DIA. DRAIN TILE SET INTO TRENCH WITH AGGREGATE BED EDGED WITH 5" TALL X 2" THICK BLACK PAINTED STEEL EDGING. TIE INTO NEAREST DRAIN STRUCTURE. SEE DETAIL #18 SHT G4.00
- NEW CURB DRAINS AND DRAINAGE LATERALS; SEE CIVIL DRAWINGS FOR CONSTRUCTION DETAILS AND FOR FURTHER INFORMATION - LAYOUT SHOWN MAY DIFFER FROM FINAL CIVIL DRAWINGS - CONTRACTOR IS TO FOLLOW INSTRUCTIONS AND LAYOUTS SHOWN WITHIN CIVIL SHEETS TYP
- DISTURBED LAWN; RE-SEED, HYDROMULCH DISTURBED LAWNS AND RESTORE BACK TO ACCEPTABLE CONDITIONS PRIOR TO THE COMPLETION OF CONSTRUCTION. REFER TO PROJECT MANUAL
- NEW LIGHT POLE BASES AND LIGHTS MEETING HSAA REGULATIONS; SEE ELECTRICAL DRAWINGS FOR FURTHER INFORMATION.
- EX. TENNIS BUILDING TO REMAIN - PROTECT DURING CONSTRUCTION
- EX. ELECTRICAL MANHOLES, PEDESTALS, BASES AND LIGHTS NOT NOTED FOR NEW WORK OR DEMOLITION IS TO REMAIN - NOTED OR NOT - PROTECT DURING CONSTRUCTION - SEE ELECTRICAL DRAWINGS FOR FURTHER CLARIFICATION
- THICKENED EDGE PAVMT @ EX. PAVMT EDGE DETAIL; SEE DETAIL #10 SHT G4.00
- MONOLITHIC CONC. CURB AND GUTTER AT EX. LAWN; SEE DETAIL #21 SHT G4.00.
- EX. LAWN AND LANDSCAPING TO REMAIN
- CARMEL HIGH SCHOOL "C" LOGO - SEE ENLARGED "C" LOGO DETAIL ON SHT G1.00 - PROVIDE GRAPHIC AS SHOWN WITHIN LAYOUT - COLORS CONSISTING OF (WHITE, YELLOW, BLUE) - FINAL APPROVED LOGO MAY VARY FROM WHAT'S SHOWN - COLORS ARE TO MATCH CCS HIGH SCHOOL BRANDING GUIDELINES - CONTRACTOR IS TO OBTAIN OFFICIAL GRAPHIC STANDARDS FROM THE OWNER PRIOR TO THE START OF CONSTRUCTION
- NEW TO PERIMETER FENCING - SET WITHIN CONC. POINT 5' CLEAR OF EDGE OF PAVEMENT. PROVIDE CONTINUOUS WINDSCREEN (6" WIDE) ALONG OUTSIDE FACE OF FENCE LINES INDICATED - NEW 10" HIGH CHAIN LINK FENCING. SEE DETAILS #16-18 AND DETAIL #10 SHT G4.00 FOR FURTHER INFORMATION. PROVIDE CUSTOM GRAPHICS, INCLUDING CUSTOM GRAPHICS ON 8" WIDE AND 7" 0" TALL DOUBLE WIDE MAN GATES. GRAPHICS INCLUDING SCHOOL LOGO AND LETTERING. TO COMPLY WITH CARMEL CLAY SCHOOLS BRANDING STANDARDS AND GUIDELINES FOR THEIR HIGH SCHOOL ATHLETICS. CONTRACTOR IS TO COORDINATE WITH ARCHITECT AND OWNERS TO SUBMIT LAYOUT FOR OWNER APPROVAL PRIOR TO THE START OF CONSTRUCTION.
- NEW INVERTED "U" BIKE RACKS (8 TOTAL) - COLOR (BLACK) OWNER TO HAVE FINAL COLOR SELECTION PRIOR TO CONSTRUCTION. INSTALL PER MANUF. WRITTEN RECOMMENDATIONS - INSURE LAYOUT OF BIKE RACKS COMPLIES WITH MANUF. CONSTRUCTION DETAIL - OBTAIN DETAILS FROM MANUF. PRIOR TO CONSTRUCTION - SEE DETAIL #19 SHT G4.01 FOR FURTHER INFORMATION.
- NEW STORM FENCING - SEE G2.00 AND CIVIL DRAWINGS FOR FURTHER INFORMATION
- NEW NYLOPLAST STORM STRUCTURE - INSTALL PER MANUF. WRITTEN INSTRUCTIONS - SEE SHT G2.00 AND CIVIL DRAWINGS FOR FURTHER INFORMATION
- CROSSWALK AND OR ADA STRIPING TO MATCH EX. - PROVIDE 45 DEGREE PATTERN TO MATCH EX. FOUND ON SITE - SITE VERIFY EX. CONDITIONS PRIOR TO THE START OF CONSTRUCTION TYP - ADA PARKING SPACES (BLUE) - CROSS WALK (WHITE)
- ADA ACCESSIBLE RAMP - SEE DETAILS #4 SHT G4.01 FOR FURTHER INFORMATION
- NEW FORMS AND SURFACES. CORDIA TRASH RECEPTACLE WITH HOOD (BASIS OF DESIGN) - 36 GAL TRASH RECEPTACLES MATCHING CCS STANDARDS (15 TOTAL) - COUNTS GIVEN ON PLANS SUPERCEDE PROJECT MANUAL TYPE AND QUANTITIES - TO MATCH TYPE AND STYLE FOUND AT CARMEL HIGH SCHOOL MATERIALS - WITH HOOD AND ACCESSORIES - INSTALL PER MANUF. WRITTEN RECOMMENDATIONS - SEE DETAIL #11 SHT G4.01 FOR FURTHER INFORMATION
- EX. CONC. PARKING BUMPERS (22 TOTAL) TO REMAIN - PROTECT DURING CONSTRUCTION - WHERE NEW WORK IS BEING CALLED OUT - REMOVE EX. CONC. PARKING BUMPERS AS NEEDED PRIOR TO APPLYING NEW PAVING WORK - RE-INSTALL PER MANUF. WRITTEN RECOMMENDATIONS - INSTALL C1 DOWNLAYS ONE AT EACH END OF EX. PARKING BUMPERS FIRMLY SECURING EX. BUMPERS TO NEW ASPHALT PAVING
- SAW CUT AND REMOVE EX. ASPHALT IN AREAS IN SHADED AREAS AND WHERE NEW CONC. WALK IS INDICATED. INSTALL NEW PAVEMENT AND MILL AND WEDGE EX. ASPHALT PAVING WITHIN DOTTED HATCH AREA AS NEEDED TO MEET EX. SOUTH GRADES FLUSH - APPLY NEW PAVMT MARKINGS TO MATCH EX. - SITE VERIFY EX. CONDITIONS PRIOR TO THE START OF CONSTRUCTION
- EX. HANDICAP PARKING SIGNAGE AND POLES (2 TOTAL) TO REMAIN - REMOVED EXISTING POST AND SIGN PRIOR TO THE START OF CONSTRUCTION AND STORE LINE. THEIRS - INSTALL C1 DOWNLAYS WITHIN ASPHALT PAVMT AS SHOWN ON PLAN - PROVIDE (5) NEW HANDICAP SIGNAGE. POST AND FOOTINGS TO MATCH EX. FOUND ON SITE - FOR NEW ADA PARKING SPACES PROVIDE FOOTING PER LOCAL CODES AND ORDINANCES

PLAN LEGEND : SITE LAYOUT PLAN G1.00



CAUTION !!

LOCATIONS GIVEN ARE APPROXIMATE AND ARE TO BE SITE VERIFIED PRIOR TO THE START OF CONSTRUCTION. ALL CONCRETE AND ASPHALT PAVING NOT NOTED FOR WORK IS TO REMAIN - PROTECT DURING CONSTRUCTION TYP

811
Know what's below.
Call before you dig.

224063.00
CARMEL HIGH SCHOOL
WITSKEN TENNIS COMPLEX
RENOVATIONS
2460 E. SMOKY ROAD,
CARMEL, IN. 46302

CARMEL CLAY SCHOOLS
501 E. MAIN STREET, CARMEL, IN. 46303
(317) 844-9061

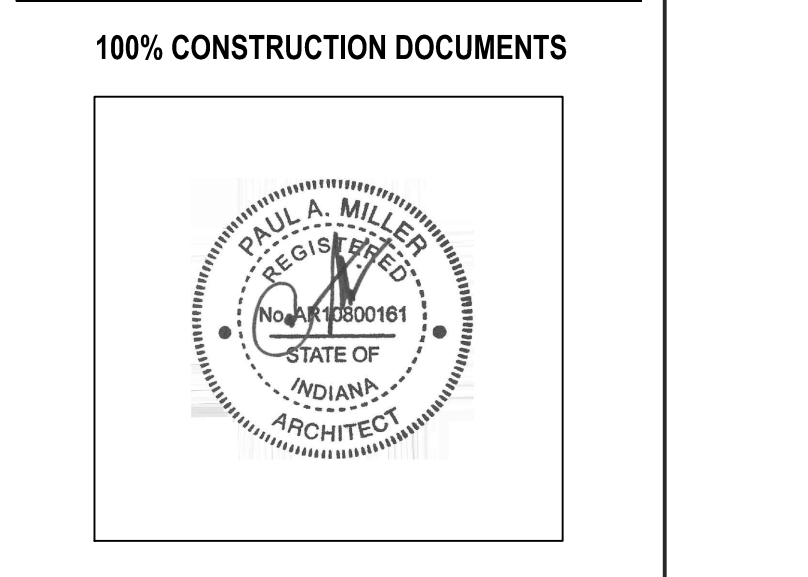


FANNING HOWEY

317-848-0966 WWW.FHAI.COM



KEY PLAN



PROJECT MANAGER: MS
DRAWN BY: EB, JJ
PROJECT NUMBER: 224063.00
PROJECT CONSTRUCTION ISSUE DATE: 08-30-2024

REV. NO.	DESCRIPTION	DATE
1	ADDENDUM 1	10/11/2024
2	ADDENDUM 2	10/21/2024

TENNIS COMPLEX RENOVATION
SITE LAYOUT PLAN

G1.00

