

# ADDENDUM NO. 1

**November 4, 2024**

Carmel Clay Schools 2025 Landscape Improvements  
5201 E. Main Street  
Carmel, IN 46033

**TO: ALL BIDDERS OF RECORD**

This Addendum forms a part of and modifies the Bidding Requirements, Contract Forms, Contract Conditions, the Specifications and the Drawings dated October 17, 2024, by Fanning/Howey. Acknowledge receipt of the Addendum in the space provided on the Bid Form. Failure to do so may subject the Bidder to disqualification.

This Addendum consists of Pages ADD 1-1, and attached Fanning/Howey Addendum No. 1 dated November 1, 2024, consisting of 2 Items, 1-page, Revised Drawing Sheets: L1.00-CWE, L1.00-WCE, L1.01-CWE, and L1.01WCE.

**A. SPECIFICATION SECTION**

1. Paragraph **3.03 BID CATEGORIES**

A. **BID CATEGORY NO. 1 – GENERAL TRADES**

Add the following Clarification:

4. Contractor to provide ram board and 1/2" plywood floor protection from the entrance to the courtyard locations at all Courtyard renovation locations. Contractor is also to provide zip wall and plastic to close off Corridors adjacent to this work access path.

ADDENDUM NO. 1

TME/CWE/PTE/FDE/WCE/T2 - Landscaping

Carmel Clay Schools  
Carmel, Indiana

Project No. 224135.00

Index of Contents

Addendum No. 1, 2 items, 1 page  
Revised Drawing Sheets: L1.00-CWE, L1.00-WCE, L1.01-CWE, and L1.01-WCE

November 1, 2024

FANNING/HOWEY ASSOCIATES, INC.  
ARCHITECTS/ENGINEERS/CONSULTANTS

TO: ALL BIDDERS OF RECORD

ADDENDUM NO. 1 to Drawings and Project Manual, dated October 17, 2024, for the TME/CWE/PTE/FDE/WCE/T2 - Landscaping for Carmel Clay Schools, 5201 E. 131<sup>st</sup> St., Carmel, Indiana 46033; as prepared by Fanning/Howey Associates, Inc., Indianapolis, Indiana.  
This Addendum shall hereby be and become a part of the Contract Documents the same as if originally bound thereto.

The following clarifications, amendments, additions, revisions, changes, and modifications change the original Contract Documents only in the amount and to the extent hereinafter specified in this Addendum.

Each bidder shall acknowledge receipt of this Addendum in his proposal or bid.

NOTE: Bidders are responsible for becoming familiar with every item of this Addendum. (This includes miscellaneous items at the very end of this Addendum.)

RE: ALL BIDDERS

ITEM NO. 1. PROJECT MANUAL, SECTION 12 93 00 – SITE FURNISHINGS AND AMENITIES

A. Replace 1.2, A., 1., as follows:

“1. Benches.”

B. Article 2.2: Change title to “BENCHES”.

C. Replace 2.2, A., as follows:

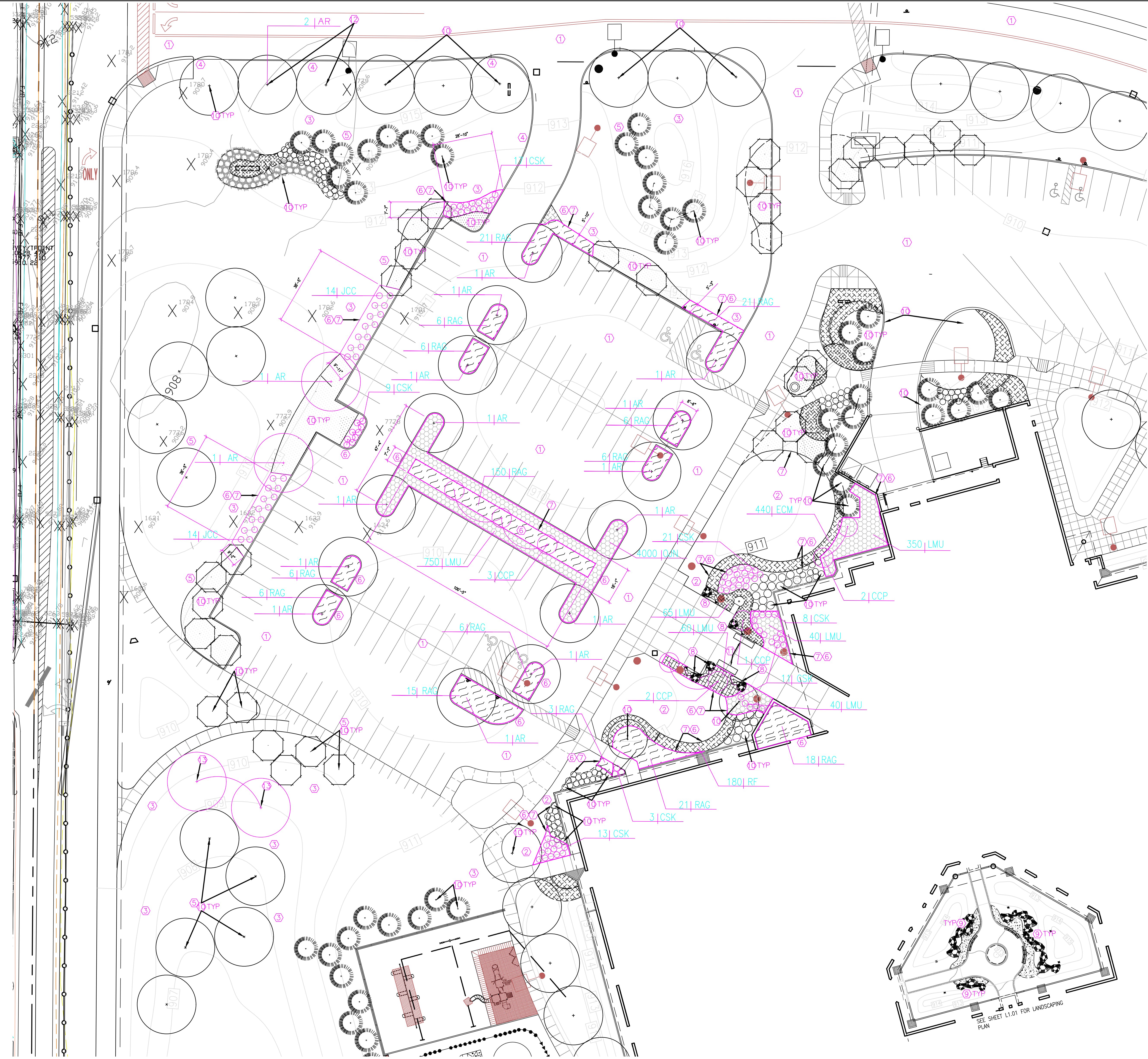
“A. Bench: “Trio Bench” by Forms and Surfaces, forms-surfaces.com, 800-451-0410, 5055 6<sup>th</sup> St., Carpinteria, California, 93013. Prior to bidding a manufacturer seeking approval as an equal shall provide a complete set of all related furniture information to show compliance with matching features of the bench specified.

1. Quantities and sizes as indicated on Drawings.
2. Surface mount benches per manufacturer’s written instructions.
3. Field verify final location with Landscape Architect prior to installation.
4. Color shall be selected from Manufacturer’s standard colors.

ITEM NO. 2. REVISED DRAWING SHEETS

A. Drawing Sheets: L1.00 - CWE, L1.00-WCE, L1.01-CWE, and L1.01 - WCE have been revised, dated 11/1/24, and is included with and hereby made a part of this Addendum. These Drawings supersede the original documents.

END OF ADDENDUM



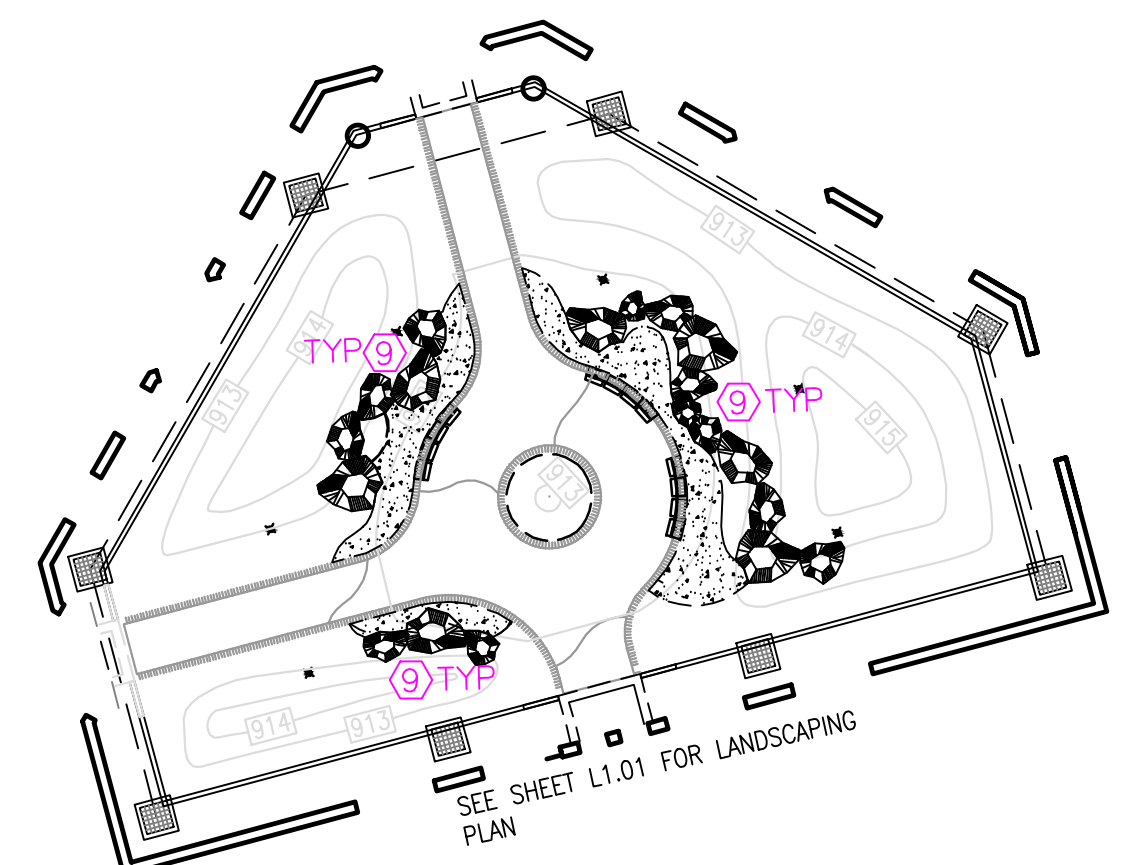
PLANT SCHEDULE - PROPOSED PLANTINGS: CWE					
KEY	BOTANICAL NAME	COMMON NAME	QUANTITY	SIZE	NOTES
SHADE / ORNAMENTAL TREES					
AR	ACER RUBRUM "OCTOBER GLORY"	OCTOBER GLORY RED MAPLE	18	10"	PROVIDE FIELD-GROWN BB, FULL, MULTI TRUNK, PLANT @ 12'-4" O.C. MIN.
COP	CERCIS CANADENSIS "FOREST PANSY"	FOREST PANSY REDBUD	9	8"	PROVIDE FIELD-GROWN BB, FULL, SINGLE TRUNK, PLANT @ 9'-4" O.C. MIN. SEE GENERAL NOTES - L1.00/L1.01
SHRUBS					
CSK	CORNUS SERICEA "KELSEY"	KELSEY DOGWOOD	112	3 GAL. CONT.	PROV. FIELD-GROWN PLANT @ 2' O.C. TYP
JCC	JUNIPERUS COMMUNIS "PENCIL POINT"	PENCIL POINT JUNIPER	100	6"	PROVIDE FIELD-GROWN, BB, PLANT @ 3' O.C. TYP
RAG	RHUS AROMATICA "GRO-GLOW"	GROW LOW SUMAC	288	1 GAL. CONT.	PROVIDE FIELD-GROWN, BB, PLANT @ 1.5' O.C. TYP
GRASSES					
LMU	LIRIOPE MUSCARI	BIG BLUE LILYTURF	4,980	1 GAL. CONT.	PROVIDE FIELD-GROWN, PLANT @ 1' O.C. TYP
PERENNIALS					
ECM	ECHINACEA "CISG CONE 2" - E. CHINACEA "PIXIE MEADOWBRITE"	CONEFLOWER "PIXIE MEADOWBRITE"	669	1 GAL. CONT.	PROVIDE FIELD-GROWN, PLANT @ 1' O.C. TYP
RF	RUBROECIA FULGIDA	BLACK-EYED SUSAN	275	1 GAL. CONT.	PROVIDE FIELD-GROWN, PLANT @ 1' O.C. TYP

PLANT SCHEDULE GENERAL NOTES:  
 PLANTING NOTES: FOR TREE PLANTING DETAILS #2-5 SHT L1.01 FOR DECIDUOUS, CONIFEROUS TREE, TREE PROTECTION AND SHRUB PLANTING TYP. REFER TO DETAIL #1 SHT L1.01 FOR STANDARD/APPROVED PLANTING LAYOUTS FOR ALL PROPOSED GRASS AND PERENNIAL HATCH AREAS TYP

- PLAN NOTES**
- EXISTING PARKING LOT AND DRIVES TO REMAIN - PROTECT DURING CONSTRUCTION. CONTRACTOR IS TO REPAIR ALL DAMAGED PAVING TO LIKE NEW CONDITIONS PRIOR TO THE COMPLETION OF CONSTRUCTION
  - FINE GRADE AND SOD ALL LAWN AREAS AS NOTED
  - SITE WIDE - INSTALL 3" TOP SOIL IN ALL DISTURBED LAWN OR PLANTING AREAS. PROPERLY BLEND ADDED TOPSOIL TO GRADES FLUSH PRIOR TO RESTORING LAWN AREAS BACK TO THEIR PRE CONSTRUCTION CONDITIONS
  - INSTALL SILT FENCE IN LOCATIONS AS REQUIRED BY LOCAL AND STATE ORDINANCES
  - SITE WIDE - INSTALL TREE PROTECTION BARRIER, AROUND EXISTING TREES ON SITE AND NEAR CONSTRUCTION NOTED, SEE DETAIL #3 SHT. L1.01 TYP
  - ALL PROPOSED AND RENOVATED PLANTING BEDS: EX. SOIL BASE PROFILE TO REMAIN - TILL EX. SOIL TYP - MIX/TILL IN 2" COMPOSE MATERIAL, 3"PEAT MOSS, AND 3" TOP DRESSING OF MULCH - FINISH GRADE FINISH GRADE ELEVATION TO BE 1" BELOW ADJACENT PAVING FINISH GRADE ELEVATION TYP
  - 11 GA X 4" X 120" HIGH COMMERCIAL GRADE PREFABRICATED ASTM A666-4 COR-TEN STEEL GARDEN LANDSCAPE EDGING WITH SLOTS AND STAKES FOR INSTALLATION - INSTALL PER MANUF. WRITTEN RECOMMENDATIONS - MAX REVEAL OF EDGING FROM FG 2"
  - CONSTRUCT WEATHERED LIMESTONE BOULDER ACCENTS - ROUNDED AND WEATHERED LIMESTONE BOULDERS 2'-4" ACROSS X 24" IN HEIGHT. BOULDERS SHALL BE SELECTED AND APPROVED BY LANDSCAPE ARCHITECT AT QUARRY OR SUPPLIER. ACCEPTABLE BOULDERS AS AVAILABLE THROUGH EARTHWORKS INC., PERRYVILLE, MD, 573-547-5097. DIG DOWN MIN. 1' DEPTH AND LENGTH OF BOLDER - PLACE BOLDER WITHIN HOLE PRIOR TO ESTABLISHING NEW OR RENOVATED PLANTING BED. ADD BOULDERS AS REQUIRED TO ACHIEVE FLUSH AND LEVEL ELEVATIONS
  - EXISTING BOULDERS TO REMAIN - PROTECT DURING CONSTRUCTION. SITE VERIFY EX. CONDITIONS OF BOULDERS PRIOR TO BIDDING AND START OF CONSTRUCTION
  - EX. LANDSCAPING TO REMAIN - PROTECT DURING CONSTRUCTION. SITE VERIFY LOCATIONS AND CONDITIONS OF EX. LANDSCAPING PRIOR TO BIDDING AND THE START OF CONSTRUCTION
  - NEW BENCHES (2), BASIS-OF-DESIGN: FORMS+SURFACES - TRIO BENCH, QUANTITIES AND SIZES AS SHOWN IN PLANS, FIELD LOCATE WITH LANDSCAPE ARCHITECT PRIOR TO INSTALLATION. COLOR AS SELECTED FROM MANUFACTURER'S STANDARD COLORS DURING SUBMITTAL PROCESS, AND SURFACE MOUNT PER MANUFACTURER'S WRITTEN RECOMMENDATIONS - SEE DETAIL #6 SHT L1.01
  - TRANSPLANT/RELOCATE EX. RED MAPLES (2) - INSTALL PER DETAIL #4 SHT L1.01
  - RELOCATED RED MAPLES (2) INSTALL PER DETAIL #4 SHT L1.01
  - EXISTING GRAVEL BED RENOVATION: DIG OUT EX. BED 6" AND ADD NEW 6" LAYER OF (1-2") WASHED RIVER STONES TO AREA - INSTALL WEED FABRIC AT BOTTOM OF BED PRIOR TO INSTALL OF NEW STONE - FABRIC IS TO NOT SHOW ONCE NEW STONE IS APPLIED
  - EXISTING AGGREGATE BED, DRAINAGE STRUCTURES (8+/-) AND CONC. CURBING TO REMAIN - PROTECT DURING CONSTRUCTION TYP
  - REMOVE EXISTING BRICK PAVERS THAT ARE HEAVY, UNEVEN AND/OR BROKEN WITH FG AND OR BROKEN IN THEIR ENTIRETY (4 ROUGHLY 170 PAVERS) AND RESET TO BE FLUSH AND LEVEL WITH FG - REPLACE (40) BROKEN PAVERS TO MATCH EX. FOUND ON SITE. SWEEP IN NEW LAYER OF SAND WITHIN PAVEMENT JOINTS

**GENERAL PLAN NOTES:**  
 CONTRACTOR SHALL TAKE SPECIAL CARE TO COORDINATE LANDSCAPE PLANTING WITH EX. UNDERGROUND UTILITIES.  
 ALL PROPOSED PLANTING BEDS ARE TO RECEIVE COMMERCIAL GRADE CORETEN METAL LANDSCAPE EDGING AROUND ALL SIDES/PERIMETER OF PLANTING BEDS TYP - NO EDGING ON PERIMETER EDGES ABUTTING EXISTING PAVING, AND PROVIDE WEED FILTER FABRIC WITHIN ALL NEW AND RENOVATED BEDS TYP  
 CORE TEN EDGING IS TO BE FLUSH AND LEVEL - FINISH GRADE OF EDGING SHOULD BE 2" ABOVE FG OF NEW AND RENOVATED PLANTING BEDS.  
 SEE SHTS L1.00 AND L1.01 FOR PLANTING BED LOCATIONS, SITE VERIFY EX. CONDITIONS PRIOR TO BIDDING AND START OF CONSTRUCTION, SEE SHT L1.01 FOR PLANTING DETAILS #1-5

- GENERAL LANDSCAPE NOTES**
- CONTRACTOR SHALL CONFIRM LOCATION OF ALL UTILITIES AND SUBSURFACE DRAINS. CONTRACTOR TO REPAIR ALL DAMAGES TO EXISTING UTILITIES, CURBS, PAVEMENTS, ETC., RESULTING FROM LANDSCAPE INSTALLATIONS WHICH OCCUR DURING THE INSTALLATION PROCESS.
  - ALL PLANTING OPERATIONS AND MATERIALS SHALL ADHERE TO THE AMERICAN NURSERY & LANDSCAPE ASSOCIATION. ALL EVERGREEN, ORNAMENTAL, AND SHADE TREES ARE TO HAVE ONE SINGLE DOMINANT LEADER, UNLESS SPECIFIED AS CLUMP OR MULTI-STEMMED.
  - PROTECT ALL VEGETATION NOT SCHEDULED TO BE REMOVED. ANY DAMAGE TO VEGETATION THAT IS TO REMAIN SHALL BE REPLACED WITH LIKE SPECIES AND SIZE.
  - ALL SUBSTITUTIONS AND PLAN CHANGES MUST BE APPROVED BY THE ARCHITECT PRIOR TO ANY ACTION TAKEN.
  - PLANTING SOIL AND MULCH FOR ALL TREES AND SHRUBS SHALL BE PER APPROPRIATE DETAIL.
  - FINE GRADE, TOPSOIL, AND SEED ALL DISTURBED AREAS. TAKE SPECIAL CARE NOT TO OVERSEED ONTO PAVED AREAS.
  - REMOVE EXISTING VEGETATIVE GROWTH FROM THE AREAS TO BE REPLANTED AND SURFACE TILL TO A DEPTH OF FOUR (4) INCHES. IF THE GROUND IS WET, DELAY TILLING UNTIL THE SOIL DRIES ENOUGH TO BREAK APART WHEN TILLED.
  - LIGHTLY COMPACT TILLED SOIL WITH A ROLLER, CULTIPACKER OR SIMILAR IMPLEMENT.
  - THE CONTRACTOR SHALL MAINTAIN THE COMPLETED LANDSCAPE UNTIL THE DATE OF FINAL ACCEPTANCE PER THE SPECIFICATIONS.
  - SHOULD A DISCREPANCY BE FOUND BETWEEN THE PLANTING PLAN AND PLANT SCHEDULE, THE PLANTING PLAN SHALL TAKE PRECEDENCE.



**SITE LANDSCAPING PLAN : CWE**  
 SCALE: 1" = 20'-0"

**CCS TME / CWE / PTE / FDE / WCE/ T2 LANDSCAPING**

- TOWNE MEADOW ELEMENTARY (TME)  
10850 TOWNE RD.  
CARMEL, IN 46032
- COLLEGE WOOD ELEMENTARY (CWE)  
12415 SHELBORNE RD.  
CARMEL, IN 46032
- PRAIRIE TRACE ELEMENTARY (PTE)  
14200 RIVER RD.  
CARMEL, IN 46033
- FOREST DALE ELEMENTARY (FDE)  
10721 LAKESHORE DR. W.  
CARMEL, IN 46033

- TRANSPORTATION BUILDING WEST (T2)  
12425 SHELBORNE RD.  
CARMEL, IN 46032
- WEST CLAY ELEMENTARY (WCE)  
3495 W 126TH ST  
CARMEL, IN 46032

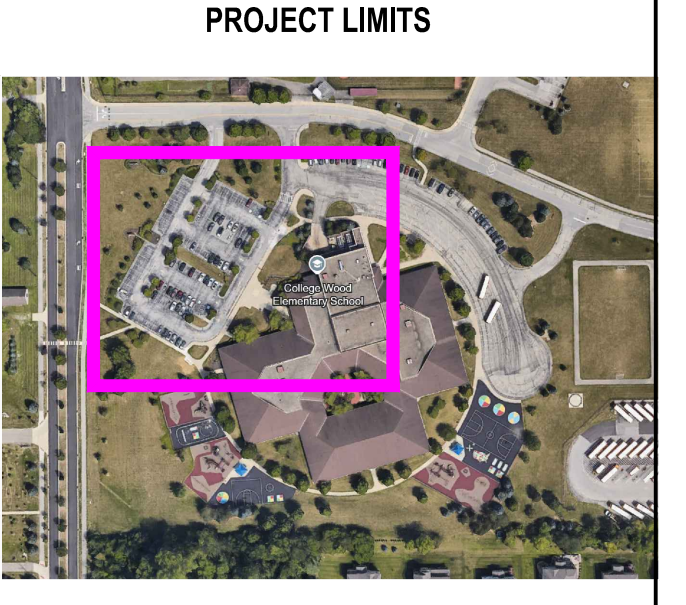
**CARMEL CLAY SCHOOLS**



ARCHITECT

**FANNING HOWEY**

317-848-0966 WWW.FHAL.COM  
 350 EAST NEW YORK ST. SUITE 300  
 INDIANAPOLIS, IN 46204



**PROJECT LIMITS**

100% CONSTRUCTION DOCUMENTS



PROJECT MANAGER: DR  
 DRAWN BY: EPB  
 PROJECT NUMBER: 224135.00  
 PROJECT ISSUE DATE: 10/17/2024

REV. NO.	DESCRIPTION	DATE
1	ADDENDUM 1	11/01/24

**PLANTING PLAN**  
**L1.00**

**811**  
 Know what's below.  
 Call before you dig.

**CAUTION!!**  
 THE LOCATION OF ALL EXISTING UNDERGROUND UTILITIES HAS BEEN SHOWN ON THESE PLANS BASED ON AVAILABLE RECORD INFORMATION AND FIELD SURVEY. CONTRACTORS SHALL BE RESPONSIBLE FOR VERIFYING THE LOCATION OF ALL UTILITIES PRIOR TO ANY CONSTRUCTION. CONTRACTORS SHALL BE RESPONSIBLE FOR OBTAINING NECESSARY PERMITS AND PROTECTING ALL UTILITIES PRIOR TO ANY CONSTRUCTION. CONTRACTORS SHALL BE RESPONSIBLE FOR OBTAINING NECESSARY PERMITS AND PROTECTING ALL UTILITIES PRIOR TO ANY CONSTRUCTION. CONTRACTORS SHALL BE RESPONSIBLE FOR OBTAINING NECESSARY PERMITS AND PROTECTING ALL UTILITIES PRIOR TO ANY CONSTRUCTION.

LOCATIONS GIVEN ARE APPROXIMATE AND ARE TO BE SITE VERIFIED PRIOR TO THE START OF CONSTRUCTION. ALL CONCRETE AND ASPHALT PAVING NOT NOTED FOR WORK IS TO REMAIN - PROTECT DURING CONSTRUCTION TYP



**SITE LANDSCAPING PLAN : WCE**  
SCALE: 1" = 20'-0"

PLANT SCHEDULE - PROPOSED PLANTINGS: WCE					
KEY	BOTANICAL NAME	COMMON NAME	QUANTITY	SIZE	NOTES
SHADE / ORNAMENTAL TREES					
AR	ACER RUBRUM "OCTOBER GLORY"	OCTOBER GLORY RED MAPLE	16	10"	PROVIDE FIELD-GROWN BB, FULL, MULTI TRUNK, PLANT @ 12'-4" - O.C. MIN.
CCP	CERCIS CANADENSIS "FOREST PANSY"	FOREST PANSY REDBUD	9	8"	PROVIDE FIELD-GROWN BB, FULL, SINGLE TRUNK, PLANT @ 9'-4" - O.C. MIN. SEE GENERAL NOTES - L1.00/L1.01
SHRUBS					
CSK	CORNUS SERICEA "KELSEY"	KELSEY DOGWOOD	112	3 GAL. CONT.	PROV. FIELD-GROWN PLANT @ 2' O.C. TYP.
JCC	JUNIPERUS COMMUNIS "PENCIL POINT"	PENCIL POINT JUNIPER	100	6"	PROVIDE FIELD-GROWN, BB, PLANT @ 3' O.C. TYP.
RAG	RHUS AROMATICA "GRO-GLOW"	GROW LOW SUMAC	288	1 GAL. CONT.	PROVIDE FIELD-GROWN, BB, PLANT @ 1.5' O.C. TYP.
GRASSES					
LMU	LIRIOPE MUSCARI	BIG BLUE LILTURF	4,980	1 GAL. CONT.	PROVIDE FIELD-GROWN, PLANT @ 1' O.C. TYP.
PERENNIALS					
ECM	ECHINACEA "CIG CONE 2" - E. CHINACEA "PIXIE MEADOWBRITE"	CONEFLOWER "PIXIE MEADOWBRITE"	669	1 GAL. CONT.	PROVIDE FIELD-GROWN, PLANT @ 1' O.C. TYP.
RF	RUDBECKIA FULGIDA	BLACK-EYED SUSAN	275	1 GAL. CONT.	PROVIDE FIELD-GROWN, PLANT @ 1' O.C. TYP.

PLANT SCHEDULE GENERAL NOTES: PLANTING NOTES: FOR TREE PLANTING DETAILS #2-5 SHT L1.01 FOR DECIDUOUS, CONIFEROUS TREE, TREE PROTECTION AND SHRUB PLANTING TYP. REFER TO DETAIL #1 SHT L1.01 FOR STANDARD/ APPROVED PLANTING LAYOUTS FOR ALL PROPOSED GRASS AND PERENNIAL HATCH AREAS TYP.

- PLAN NOTES**
- EXISTING PARKING LOT AND DRIVES TO REMAIN - PROTECT DURING CONSTRUCTION. CONTRACTOR IS TO REPAIR ALL DAMAGED PAVING TO LIKE NEW CONDITIONS PRIOR TO THE COMPLETION OF CONSTRUCTION.
  - FINE GRADE AND SOD ALL LAWN AREAS AS NOTED.
  - SITE WIDE - INSTALL 3" TOP SOIL IN ALL DISTURBED LAWN OR PLANTING AREAS. PROPERLY BLEND ADDED TOPSOIL TO GRADES FLUSH PRIOR TO RESTORING LAWN AREAS BACK TO THEIR PRE CONSTRUCTION CONDITIONS.
  - INSTALL SILT FENCE IN LOCATIONS AS REQUIRED BY LOCAL AND STATE ORDINANCES.
  - SITE WIDE - INSTALL TREE PROTECTION BARRIER, AROUND EXISTING TREES ON SITE AND NEAR CONSTRUCTION NOTED, SEE DETAIL #3 SHT. L1.01 TYP.
  - ALL PROPOSED AND RENOVATED PLANTING BEDS: EX. SOIL BASE PROFILE TO REMAIN - TILL EX. SOIL TYP - MIX/TILL IN 2" COMPOSE MATERIAL, 3"PEAT MOSS, AND 3" TOP DRESSING OF MULCH - PLANTING BED FINISH GRADE ELEVATION TO BE 1" BELOW ADJACENT PAVING FINISH GRADE ELEVATION TYP.
  - 11 GA X 4" X 120" HIGH COMMERCIAL GRADE PREFABRICATED ASTM A666-4 CORETEN STEEL GARDEN LANDSCAPE EDGING WITH SLOTS AND STAKES FOR INSTALLATION - INSTALL PER MANUF. WRITTEN RECOMMENDATIONS - MAX REVEAL OF EDGING FROM FG 2"
  - CONSTRUCT WEATHERED LIMESTONE BOULDERS ACCENTS - ROUNDED AND WEATHERED LIMESTONE BOULDERS 2'-4" ACROSS X 24" IN HEIGHT. BOULDERS SHALL BE SELECTED AND APPROVED BY LANDSCAPE ARCHITECT AT QUARRY OR SUPPLIER. ACCEPTABLE BOULDERS AS AVAILABLE THROUGH EARTHWORKS INC., PERRYVILLE, MO, 573-547-5097. DIG DOWN MIN. 1' DETH AND LENGTH OF BOLDER - PLACE BOLDER WITHIN HOLE PRIOR TO ESTABLISHING NEW OR RENOVATED PLANTING BED. ADD BOULDER AS REQUIRED TO ACHIEVE FLUSH AND LEVEL ELEVATIONS.
  - EXISTING BOULDERS TO REMAIN - PROTECT DURING CONSTRUCTION. SITE VERIFY EX. CONDITIONS OF BOULDERS PRIOR TO BIDDING AND START OF CONSTRUCTION.
  - EX. LANDSCAPING TO REMAIN - PROTECT DURING CONSTRUCTION. SITE VERIFY LOCATIONS AND CONDITIONS OF EX. LANDSCAPING PRIOR TO BIDDING AND THE START OF CONSTRUCTION.
  - NEW BENCHES (2), BASIS-OF-DESIGN: FORMS+SURFACES - TRO BENCH. QUANTITIES AND SIZES AS SHOWN IN PLANS. FIELD LOCATE WITH LANDSCAPE ARCHITECT PRIOR TO INSTALLATION. COLOR AS SELECTED FROM MANUFACTURER'S STANDARD COLORS DURING SUBMITTAL PROCESS, AND SURFACE MOUNT PER MANUFACTURER'S WRITTEN RECOMMENDATIONS-SEE DETAIL #6 SHT L1.01
  - NOT USED
  - NOT USED
  - EXISTING GRAVEL BED RENOVATION: DIG OUT EX. BED 6" AND ADD NEW 6" LAYER OF (1-2") WASHED RIVER STONES TO AREA - INSTALL WEED FABRIC AT BOTTOM OF BED PRIOR TO INSTALL OF NEW STONE - FABRIC IS TO NOT SHOW ONCE NEW STONE IS APPLIED.
  - EXISTING AGGREGATE BED, DRAINAGE STRUCTURES (8+/-) AND CONC. CURBING TO REMAIN - PROTECT DURING CONSTRUCTION TYP.
  - REMOVE EXISTING BRICK PAVERS THAT ARE HEAVY, UNEVEN AND/OR BROKEN WITH FG AND OR BROKEN IN THEIR ENTIRETY (ROUGHLY 170 PAVERS) AND RESET TO BE FLUSH AND LEVEL WITH FG - REPLACE (40) BROKEN PAVERS TO MATCH EX. FOUND ON SITE. SWEEP IN NEW LAYER OF SAND WITHIN PAVER JOINTS.

**GENERAL PLAN NOTES:**  
CONTRACTOR SHALL TAKE SPECIAL CARE TO COORDINATE LANDSCAPE PLANTING WITH EX. UNDERGROUND UTILITIES.  
ALL PROPOSED PLANTING BEDS ARE TO RECEIVE COMMERCIAL GRADE CORETEN METAL LANDSCAPE EDGING AROUND ALL SIDES/PERIMETER OF PLANTING BEDS TYP - NO EDGING ON PERIMETER EDGES ABUTTING EXISTING PAVING, AND PROVIDE WEED FILTER FABRIC WITHIN ALL NEW AND RENOVATED BEDS TYP.  
CORE TEN EDGING IS TO BE FLUSH AND LEVEL - FINISH GRADE OF EDGING SHOULD BE 2" ABOVE FG OF NEW AND RENOVATED PLANTING BEDS.  
SEE SHTS L1.00 AND L1.01 FOR PLANTING BED LOCATIONS, SITE VERIFY EX. CONDITIONS PRIOR TO BIDDING AND START OF CONSTRUCTION, SEE SHT L1.01 FOR PLANTING DETAILS #1-5

- GENERAL LANDSCAPE NOTES**
- CONTRACTOR SHALL CONFIRM LOCATION OF ALL UTILITIES AND SUBSURFACE DRAINS. CONTRACTOR TO REPAIR ALL DAMAGES TO EXISTING UTILITIES, CURBS, PAVEMENTS, ETC., RESULTING FROM LANDSCAPE INSTALLATIONS WHICH OCCUR DURING THE INSTALLATION PROCESS.
  - ALL PLANTING OPERATIONS AND MATERIALS SHALL ADHERE TO THE AMERICAN NURSERY & LANDSCAPE ASSOCIATION. ALL EVERGREEN, ORNAMENTAL AND SHADE TREES ARE TO HAVE ONE SINGLE DOMINANT LEADER, UNLESS SPECIFIED AS CLUMP OR MULTI-STEMMED.
  - PROTECT ALL VEGETATION NOT SCHEDULED TO BE REMOVED. ANY DAMAGE TO VEGETATION THAT IS TO REMAIN SHALL BE REPLACED WITH LIKE SPECIES AND SIZE.
  - ALL SUBSTITUTIONS AND PLAN CHANGES MUST BE APPROVED BY THE ARCHITECT PRIOR TO ANY ACTION TAKEN.
  - PLANTING SOIL AND MULCH FOR ALL TREES AND SHRUBS SHALL BE PER APPROPRIATE DETAIL.
  - FINE GRADE, TOPSOIL, AND SEED ALL DISTURBED AREAS. TAKE SPECIAL CARE NOT TO OVERSEED ONTO PAVED AREAS.
  - REMOVE EXISTING VEGETATIVE GROWTH FROM THE AREAS TO BE REPLANTED AND SURFACE TILL TO A DEPTH OF FOUR (4) INCHES. IF THE GROUND IS WET, DELAY TILLING UNTIL THE SOIL DRIES ENOUGH TO BREAK APART WHEN TILLED.
  - LIGHTLY COMPACT TILLED SOIL WITH A ROLLER, CULTIPACKER OR SIMILAR IMPLEMENT.
  - THE CONTRACTOR SHALL MAINTAIN THE COMPLETED LANDSCAPE UNTIL THE DATE OF FINAL ACCEPTANCE PER THE SPECIFICATIONS.
  - SHOULD A DISCREPANCY BE FOUND BETWEEN THE PLANTING PLAN AND PLANT SCHEDULE, THE PLANTING PLAN SHALL TAKE PRECEDENCE.

Know what's below.  
Call before you dig.

**CAUTION!!**

THE LOCATION OF ALL EXISTING UNDERGROUND UTILITIES (INCLUDING BUT NOT LIMITED TO: WATER, GAS, ELECTRIC, TELEPHONE, CABLE, AND SOD) HAS BEEN FIELD VERIFIED AND SHOWN ON THESE PLANS. CONTRACTOR SHALL BE RESPONSIBLE FOR VERIFYING THE LOCATION OF ALL EXISTING UNDERGROUND UTILITIES PRIOR TO ANY CONSTRUCTION.

LOCATIONS GIVEN ARE APPROXIMATE AND ARE TO BE SITE VERIFIED PRIOR TO THE START OF CONSTRUCTION. ALL CONCRETE AND ASPHALT PAVING NOT NOTED FOR WORK IS TO REMAIN - PROTECT DURING CONSTRUCTION TYP.

## CCS TME / CWE / PTE / FDE / WCE/ T2 LANDSCAPING

**TOWNE MEADOW ELEMENTARY (TME)**  
10850 TOWNE RD  
CARMEL, IN 46032

**COLLEGE WOOD ELEMENTARY (CWE)**  
12415 SHELBORNE RD.  
CARMEL, IN 46032

**PRAIRIE TRACE ELEMENTARY (PTE)**  
14200 RIVER RD.  
CARMEL, IN 46033

**FOREST DALE ELEMENTARY (FDE)**  
10721 LAKESHORE DR. W.  
CARMEL, IN 46033

**TRANSPORTATION BUILDING WEST (T2)**  
12425 SHELBORNE RD.  
CARMEL, IN 46032

**WEST CLAY ELEMENTARY (WCE)**  
3495 W 126TH ST  
CARMEL, IN 46032

**CARMEL CLAY SCHOOLS**  
5201 EAST MAIN STREET  
CARMEL, IN 46033  
317-844-9961

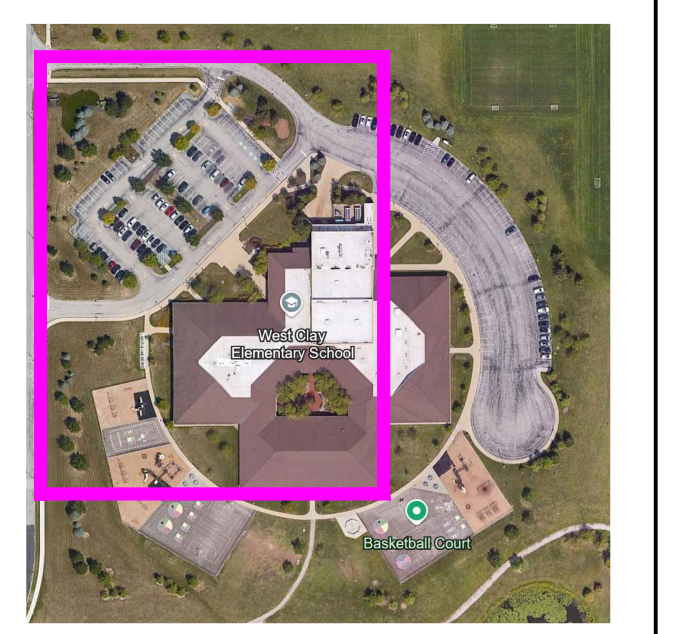


ARCHITECT

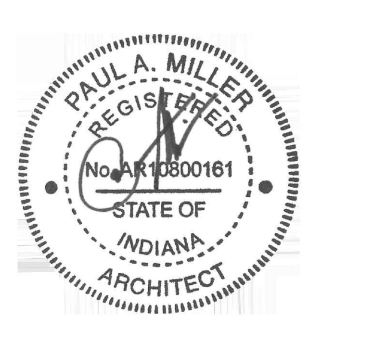
# FANNING HOWEY

317-848-0966 WWW.FHAL.COM  
350 EAST NEW YORK ST, SUITE 300  
INDIANAPOLIS, IN 46204

**PROJECT LIMITS**



**100% CONSTRUCTION DOCUMENTS**



PROJECT MANAGER: DR  
DRAWN BY: EPB  
PROJECT NUMBER: 224135.00  
PROJECT ISSUE DATE: 10/17/2024

REV. NO.	DESCRIPTION	DATE
1	ADDENDUM 1	11/01/24

## PLANTING PLAN L1.00

SEQUENCE OF WORK / INSTALLATION SCHEDULE

1. PRIOR TO MAJOR EARTHWORK
  - A. INSTALLATION OF SILT FENCES AS CALLED FOR.
2. DURING INITIAL GRADING
  - A. INSTALL ALL EROSION CONTROL NETTING AS CALLED FOR IMMEDIATELY FOLLOWING GRADING OF EACH AREA.
  - B. INSTALL SILT FENCE AROUND ALL EXISTING AND PROPOSED DRAINAGE STRUCTURES AS THEY ARE INSTALLED TO LIMIT SILT DEPOSITS IN STORM SYSTEM AND DOWN STREAM.
  - C. FINE GRADE, SEED, INSTALL EROSION CONTROL NETTING, AND MULCH IN ALL SMALL AREAS AS NOTED.
  - D. FINE GRADE, SEED, TOPSOIL & SUBSOIL STOCKPILE AREAS AS NOTED ON PLANS AS SOON AS GRADING OPERATIONS COMPLETE.

MAINTENANCE PROGRAM & BASIC PRINCIPLES

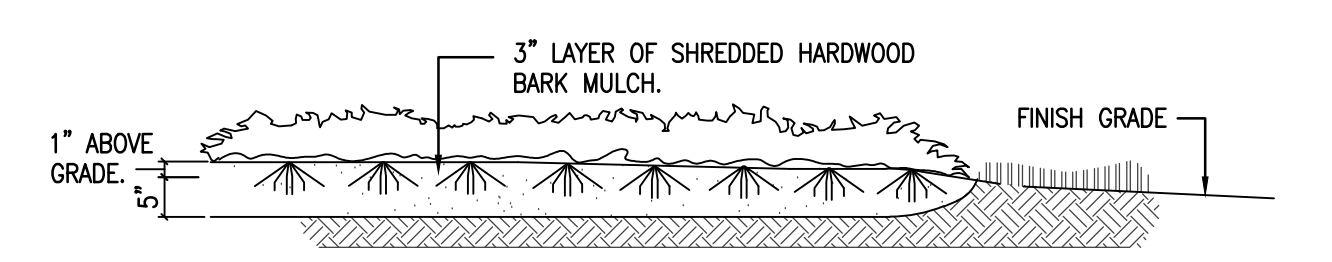
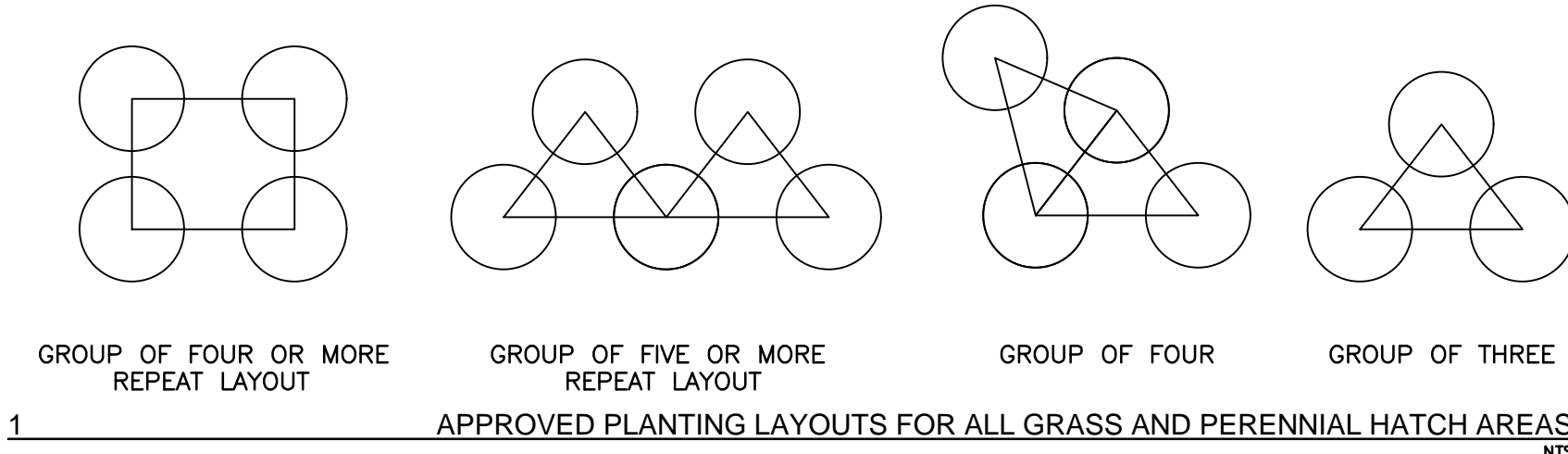
- FILTER FENCE**
- \*INSPECT THE SILT FENCE PERIODICALLY AND AFTER EACH STORM EVENT.
  - \*IF FENCE FABRIC TEARS, STARTS TO DECOMPOSE, OR IN ANYWAY BECOMES INEFFECTIVE, REPLACE THE AFFECTED PORTION IMMEDIATELY.
  - \*REMOVE DEPOSITED SEDIMENT WHEN IT REACHES HALF THE HEIGHT OF THE FENCE AT ITS LOWEST POINT OR IS CAUSING THE FABRIC TO BULGE.
  - \*TAKE CARE TO AVOID UNDERMINING THE FENCE DURING CLEAN OUT.
  - \*AFTER THE CONTRIBUTING DRAINAGE AREA HAS BEEN STABILIZED, REMOVE THE FENCE AND SEDIMENT DEPOSITS, BRING THE DISTURBED AREA TO GRADE, AND STABILIZE.
- FABRIC INLET PROTECTION**
- \*INSPECT FABRIC BARRIER AFTER STORM EVENTS, AND MAKE NECESSARY REPAIRS IMMEDIATELY.
  - \*REMOVE SEDIMENT FROM FROM THE POOL AREA TO PROVIDE STORAGE FOR THE NEXT STORM.
  - \*AVOID DAMAGING OR DISRUPTING THE FABRIC DURING SEDIMENT REMOVAL.
  - \*WHEN THE CONTRIBUTING DRAINAGE AREA HAS BEEN STABILIZED, REMOVE AND PROPERLY DISPOSE OF ALL CONSTRUCTION MATERIAL AND SEDIMENT, GRADE THE AREA TO THE ELEVATION OF THE TOP OF THE INLET, THEN STABILIZE.

Trio Bench

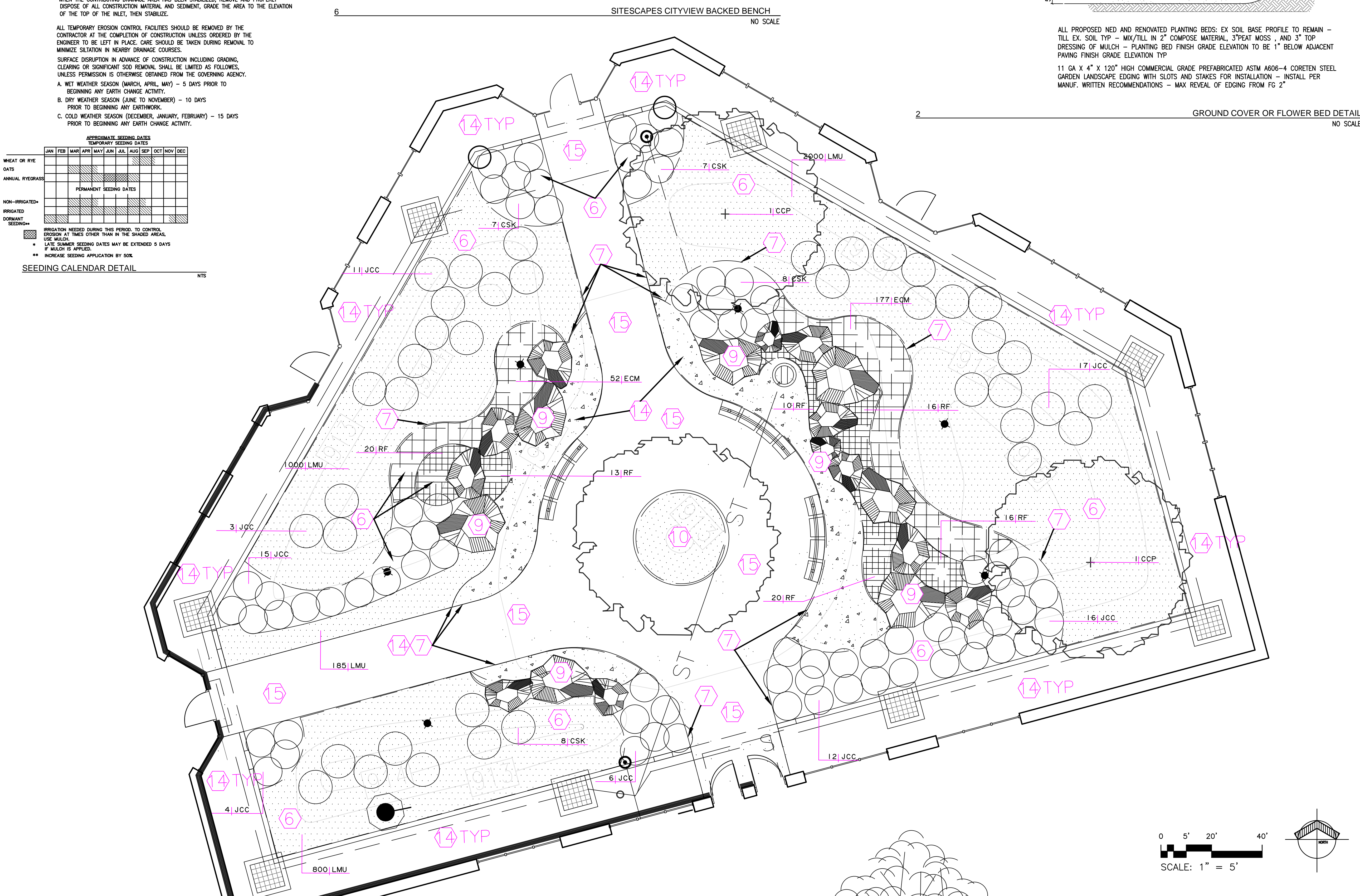
SBTRO-72WB  
 Quantity: 1  
 Finish: 1800  
 Dimensions: 70" L x 22" D x 33" H  
 Designation: Bench  
 Item Material: 100% Recycled Hardwood  
 Item Material: FSC-COC-COC-091461/1 FSC 100%  
 Item Material: FSC-COC-COC-091461/1 FSC 100%  
 Item Material: FSC-COC-COC-091461/1 FSC 100%  
 Item Material: FSC-COC-COC-091461/1 FSC 100%  
 Item Material: FSC-COC-COC-091461/1 FSC 100%  
 Item Material: FSC-COC-COC-091461/1 FSC 100%  
 Item Material: FSC-COC-COC-091461/1 FSC 100%  
 Item Material: FSC-COC-COC-091461/1 FSC 100%  
 Item Material: FSC-COC-COC-091461/1 FSC 100%  
 Item Material: FSC-COC-COC-091461/1 FSC 100%



PROPOSED SLATE AND FRAME FINISH WILL BE SELECTED FROM MANUF. STANDARD COLORS DURING SUBMITTAL PHASE TYP.



ALL PROPOSED NEW AND RENOVATED PLANTING BEDS: EX SOIL BASE PROFILE TO REMAIN - TILL EX. SOIL TYP - MIX/TILL IN 2" COMPOSE MATERIAL, 3"PEAT MOSS, AND 3" TOP DRESSING OF MULCH - PLANTING BED FINISH GRADE ELEVATION TO BE 1" BELOW ADJACENT PAVING FINISH GRADE ELEVATION TYP.  
 11 GA X 4" X 120" HIGH COMMERCIAL GRADE PREFABRICATED ASTM A606-4 CORETEN STEEL GARDEN LANDSCAPE EDGING WITH SLOTS AND STAKES FOR INSTALLATION - INSTALL PER MANUF. WRITTEN RECOMMENDATIONS - MAX REVEAL OF EDGING FROM FG 2"



SEEDING CALENDAR DETAIL

	JAN	FEB	MAR	APR	MAY	JUN	JUL	AUG	SEP	OCT	NOV	DEC
WHEAT OR RYE												
GRASS												
PERMANENT SEEDING DATES												
TEMPORARY SEEDING DATES												

IRRIGATION NEEDED DURING THIS PERIOD TO CONTROL EROSION IN OTHER THAN THE SHADY AREAS. USE MULCH. LATE SEEDING DATES MAY BE EXTENDED 5 DAYS IF MULCH IS APPLIED. \*\* INCREASE SEEDING APPLICATION BY 50%.

PLANT SCHEDULE - PROPOSED PLANTINGS: CWE

KEY	BOTANICAL NAME	COMMON NAME	QUANTITY	SIZE	NOTES
SHADE / ORNAMENTAL TREES					
AR	ACER RUBRUM "OCTOBER GLORY"	OCTOBER GLORY RED MAPLE	18	10"	PROVIDE FIELD-GROWN BB, FULL, MULTI TRUNK, PLANT @ 12'-4" - O.C. MIN.
CCP	CERCIS CANADENSIS "FOREST PANSY"	FOREST PANSY REDBUD	9	8"	PROVIDE FIELD-GROWN BB, FULL, SINGLE TRUNK, PLANT @ 9'-4" - O.C. MIN. SEE GENERAL NOTES - L1.00/L1.01
SHRUBS					
CSK	CORNUS SERICEA "KELSEY"	KELSEY DOGWOOD	112	3 GAL. CONT.	PROV. FIELD-GROWN PLANT @ 2' O.C. TYP.
JCC	JUNIPERUS COMMUNIS "PENCIL POINT"	PENCIL POINT JUNIPER	100	6"	PROVIDE FIELD-GROWN, BB, PLANT @ 3' O.C. TYP.
RAG	RHUS AROMATICA "GRO-GLOW"	GROW LOW SUMAC	288	1 GAL. CONT.	PROVIDE FIELD-GROWN, BB, PLANT @ 1.5' O.C. TYP.
GRASSES					
LMU	LIRIOPE MUSCARI	BIG BLUE LILYTURF	4,980	1 GAL. CONT.	PROVIDE FIELD-GROWN, PLANT @ 1' O.C. TYP.
PERENNIALS					
ECM	ECHINACEA "CIG CONE 2"	CONEFLOWER "PIXIE MEADOWBRITE"	669	1 GAL. CONT.	PROVIDE FIELD-GROWN, PLANT @ 1' O.C. TYP.
RF	RUBROCKIA FLUIDIGA	BLACK-EYED SUSAN	275	1 GAL. CONT.	PROVIDE FIELD-GROWN, PLANT @ 1' O.C. TYP.

PLANT SCHEDULE GENERAL NOTES:  
 PLANTING NOTES: FOR TREE PLANTING DETAILS #2-5 SHT L1.01 FOR DECIDUOUS, CONIFEROUS TREE, TREE PROTECTION AND SHRUB PLANTING. REFER TO DETAIL #1 SHT L1.01 FOR STANDARD/ APPROVED PLANTING LAYOUTS.  
 FOR ALL PROPOSED GRASS AND PERENNIAL HATCH AREAS TYP. COURTYARD TREE PLANTINGS - THE CONTRACTOR MUST VERIFY EACH SITE PRIOR TO BIDDING AND THE COMMENCEMENT OF CONSTRUCTION, ENSURE THAT THE PROPOSED ROOT BALL SIZES FOR THE REDBUD TREES IN THE COURTYARDS DO NOT EXCEED 28" INCHES IN DIAMETER (2.5 INCH CALIPERS) TO ALLOW FOR ACCESS THROUGH EXISTING DOORWAYS INTO THE INTERIOR COURTYARDS. ALL EXISTING BUILDING DOOR FRAMING AND FLOORING SHALL REMAIN AND ARE TO BE PROTECTED DURING CONSTRUCTION.

PLAN NOTES

- 1 EXISTING PARKING LOT AND DRIVES TO REMAIN - PROTECT DURING CONSTRUCTION. CONTRACTOR IS TO REPAIR ALL DAMAGED PAVING TO LIKE NEW CONDITIONS PRIOR TO THE COMPLETION OF CONSTRUCTION.
- 2 FINE GRADE AND SOO ALL LAWN AREAS AS NOTED.
- 3 SITE WIDE - INSTALL 3" TOP SOIL IN ALL DISTURBED LAWN OR PLANTING AREAS. PROPERLY BLEND ADDED TOPSOIL TO GRADES FLUSH PRIOR TO RESTORING LAWN AREAS BACK TO THEIR PRE CONSTRUCTION CONDITIONS.
- 4 INSTALL SILT FENCE IN LOCATIONS AS REQUIRED BY LOCAL AND STATE ORDINANCES.
- 5 SITE WIDE - INSTALL TREE PROTECTION BARRIER; AROUND EXISTING TREES ON SITE AND NEAR CONSTRUCTION NOTED, SEE DETAIL #3 SHT. L1.01 TYP.
- 6 ALL PROPOSED AND RENOVATED PLANTING BEDS: EX SOIL BASE PROFILE TO REMAIN - TILL EX. SOIL TYP - MIX/TILL IN 2" COMPOSE MATERIAL, 3"PEAT MOSS, AND 3" TOP DRESSING OF MULCH - PLANTING BED FINISH GRADE ELEVATION TO BE 1" BELOW ADJACENT PAVING FINISH GRADE ELEVATION TYP.
- 7 11 GA X 4" X 120" HIGH COMMERCIAL GRADE PREFABRICATED ASTM A606-4 CORETEN STEEL GARDEN LANDSCAPE EDGING WITH SLOTS AND STAKES FOR INSTALLATION - INSTALL PER MANUF. WRITTEN RECOMMENDATIONS - MAX REVEAL OF EDGING FROM FG 2"
- 8 CONSTRUCT WEATHERED LIMESTONE BOULDER ACCENTS - ROUNDED AND WEATHERED LIMESTONE BOULDERS 2'-4" ACROSS X 24" IN HEIGHT. BOULDERS SHALL BE SELECTED AND APPROVED BY LANDSCAPE ARCHITECT AT QUARRY OR SUPPLIER. ACCEPTABLE BOULDERS AS AVAILABLE THROUGH EARTHWORKS INC., PERRYVILLE, MO, 573-547-9997. DIG DOWN MIN. 1' DETH AND LENGTH OF BOLDER - PLACE BOLDER WITH HOLE PRIOR TO ESTABLISHING NEW OR RENOVATED PLANTING BED. ADD BOULDERS AS REQUIRED TO ACHIEVE FLUSH AND LEVEL ELEVATIONS.
- 9 EXISTING BOULDERS TO REMAIN - PROTECT DURING CONSTRUCTION. SITE VERIFY EX. CONDITIONS OF BOULDERS PRIOR TO BIDDING AND START OF CONSTRUCTION.
- 10 EX. LANDSCAPING TO REMAIN - PROTECT DURING CONSTRUCTION. SITE VERIFY LOCATIONS AND CONDITIONS OF EX. LANDSCAPING PRIOR TO BIDDING AND THE START OF CONSTRUCTION.
- 11 NEW BENCHES (2), BASES-OF-DESIGN: FORMS/SURFACES - TRIO BENCH: QUANTITIES AND SIZES AS SHOWN IN PLANS. FLOOR LOCATE WITH LANDSCAPE ARCHITECT PRIOR TO INSTALLATION. COLOR AS SELECTED FROM MANUFACTURER'S STANDARD COLORS DURING SUBMITTAL PROCESS, AND SURFACE MOUNT PER MANUFACTURER'S WRITTEN RECOMMENDATIONS - SEE DETAIL #6 SHT L1.01
- 12 TRANSPLANT/RELOCATE EX. RED MAPLES (2) - INSTALL PER DETAIL #4 SHT L1.01
- 13 RELOCATED RED MAPLES (2) INSTALL PER DETAIL #4 SHT L1.01
- 14 EXISTING GRAVEL BED RENOVATION: DIG OUT EX. BED 6" AND ADD NEW 6" LAYER OF (1-2") WASHED RIVER STONES TO AREA - INSTALL WEED FABRIC AT BOTTOM OF BED PRIOR TO INSTALL OF NEW STONE - FABRIC IS TO NOT SHOW OVER NEW STONE IS APPLIED
- 15 EXISTING AGGREGATE BED, DRAINAGE STRUCTURES (8+/-) AND CONC. CURBING TO REMAIN - PROTECT DURING CONSTRUCTION TYP.
- 16 REMOVE EXISTING BRICK PAVERS THAT ARE HEAVING, UNEVEN AND OR BROKEN WITH FG AND OR BROKEN IN THEIR ENTIRETY (ROUGHLY 170 PAVERS) AND RESET TO BE FLUSH AND LEVEL WITH FG - REPLACE ( 40 ) BROKEN PAVERS TO MATCH EX. FOUND ON SITE. SWEEP IN NEW LAYER OF SAND WITHIN PAVEMENT JOINTS.

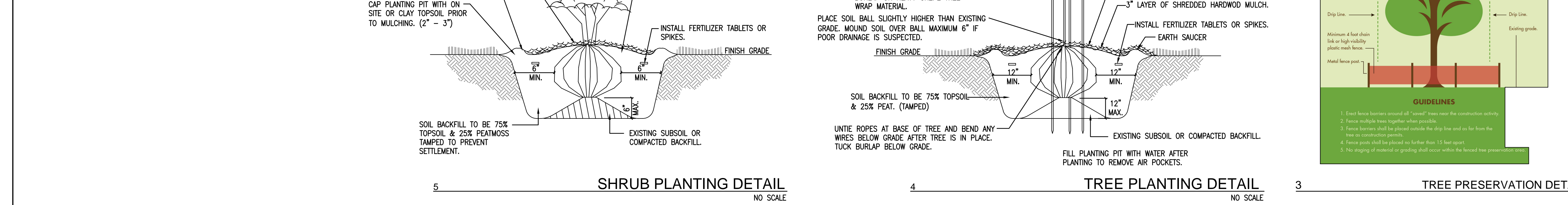
GENERAL PLAN NOTES:  
 CONTRACTOR SHALL TAKE SPECIAL CARE TO COORDINATE LANDSCAPE PLANTING WITH EX. UNDERGROUND UTILITIES.  
 ALL PROPOSED PLANTING BEDS ARE TO RECEIVE COMMERCIAL GRADE CORETEN METAL LANDSCAPE EDGING AROUND ALL SIDES/PERIMETER OF PLANTING BEDS TYP - NO EDGING ON PERIMETER EDGES ADJUTING EXISTING PAVING, AND PROVIDE WEED FILTER FABRIC WITHIN ALL NEW AND RENOVATED BEDS TYP.  
 CORE TEN EDGING IS TO BE FLUSH AND LEVEL - FINISH GRADE OF EDGING SHOULD BE 2" ABOVE FG OF NEW AND RENOVATED PLANTING BEDS.  
 SEE SHTS L1.00 AND L1.01 FOR PLANTING BED LOCATIONS, SITE VERIFY EX. CONDITIONS PRIOR TO BIDDING AND START OF CONSTRUCTION, SEE SHT L1.01 FOR PLANTING DETAILS #1-5

PLANTING NOTES

- Wire Basket Removal Process**
- Remove twine and open the burlap from around the trunk area of the tree. Pull back the excess soil around the trunk to locate the root flare and main order roots.
  - Measure the distance from the base of the root flare to the bottom of the root ball to determine the depth of the planting hole.
  - Dig the planting hole to this depth and at least two times the diameter of the root ball wide.
  - Before the tree is placed in the planting hole, use bolt cutters to remove the bottom of the basket cutting the basket horizontally. This is also a good time to remove the bottom portion of burlap if the root ball is structurally sound.
  - Roll the tree into the planting hole by the root ball, not the trunk. Be careful not to break off the connection between the roots and trunk.
  - Balance the tree upright, straight and center. Visually check from two opposing 90 degree sides for straightness. Make any adjustments using shovels to position the root ball for straight trunk orientation. Do not make adjustments by manipulating the trunk.
  - Use bolt cutters to remove the rest of the wire basket by cutting the basket vertically and peeling off the basket.
  - Remove any remaining package material including twine, strings, burlap, staples, nails, or plastic, exposing the root ball.
- Tree Staking Process (when necessary)**
- Staking should use either a two or three-point support system.
  - Any staking mechanism should be flexible enough to allow the stem and root system to develop strength. Attach the tree to either wood or metal stakes (2" X 2" X 6") with wide plastic or nylon straps.
  - If a guy wire/rope is used it should be placed through hose material around each tree then twisted to secure the tree in a relatively stable position.
  - The strap or wire/rope should be secured to each stake at an approximately right angle. Note: Stakes must not be driven through the root ball. The guys and stakes should be maintained for the duration of the contract. Trees should be checked periodically to insure that the trunks are not being damaged or girdled. All materials used to support trees should be removed and disposed of after one year, except as otherwise directed for trees requiring additional bracing time.

SITE LANDSCAPING PLAN: CWE

SCALE: 1" = 5'-0"



CCS TME / CWE / PTE / FDE / WCE/ T2 LANDSCAPING

- TOWNE MEADOW ELEMENTARY (TME)  
 10850 TOWNE RD.  
 CARMEL, IN 46032
- COLLEGE WOOD ELEMENTARY (CWE)  
 12415 SHELBORNE RD.  
 CARMEL, IN 46032
- PRAIRIE TRACE ELEMENTARY (PTE)  
 14200 RIVER RD.  
 CARMEL, IN 46033
- FOREST DALE ELEMENTARY (FDE)  
 10721 LAKESHORE DR. W.  
 CARMEL, IN 46033
- TRANSPORTATION BUILDING WEST (T2)  
 12425 SHELBORNE RD.  
 CARMEL, IN 46032
- WEST CLAY ELEMENTARY (WCE)  
 3485 W 126TH ST  
 CARMEL, IN 46032

CARMEL CLAY SCHOOLS

5201 EAST MAIN STREET  
 CARMEL, IN 46033  
 317-844-9961

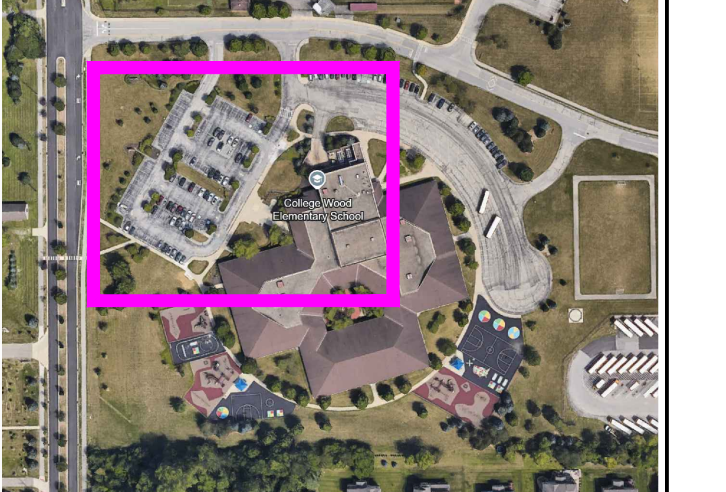


ARCHITECT

FANNING HOWEY

317-848-0966 WWW.FHAL.COM  
 350 EAST NEW YORK ST. SUITE 300  
 INDIANAPOLIS, IN 46204

PROJECT LIMITS



100% CONSTRUCTION DOCUMENTS



PROJECT MANAGER: DR  
 DRAWN BY: EPB  
 PROJECT NUMBER: 224135.00  
 PROJECT ISSUE DATE: 10/17/2024

REV. NO.	DESCRIPTION	DATE
1	ADDENDUM 1	11/01/24

SITE LANDSCAPING PLAN

L1.01

