

**ADDENDUM  
NO. 01**

**January 24, 2025**

**Kalamazoo Public Schools – Kalamazoo Central High School Athletics  
2432 n. Drake Road  
Kalamazoo, MI 49009**

**TO: ALL BIDDERS OF RECORD**

This Addendum forms a part of and modifies the Bidding Requirements, Contract Forms, Contract Conditions, the Specifications and the Drawings dated December 20, 2024, by TowerPinkster. Acknowledge receipt of the Addendum in the space provided on the Bid Form. Failure to do so may subject the Bidder to disqualification.

This Addendum consists of Pages ADD 1-1 through ADD 1-1 and TowerPinkster Addendum No. 01 dated January 17, 2025, consisting of 18 pages.

A. **SPECIFICATION SECTION 00 20 00 – INFORMATION AVAILABLE TO BIDDERS**  
1. See Site Logistics Plan attached.

B. **SPECIFICATION SECTION 00 31 00 - BID FORM**  
1. Alternate No. 02 - All work associated with Softball field and Baseball field.

C. **SPECIFICATION SECTION 01 23 00 – BID ALTERNATES**  
1. Alternate No. 02 - All work associated with Softball field and Baseball field.


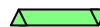



D. **SPECIFICATION SECTION 01 32 00 – SCHEDULES AND REPORTS**

a. **1.03 GUIDELINE SCHEDULE**

**Add:**

1. Refer to the attached Guideline Schedule.

Activity Name	Original Duration	Start	Finish	2025												2026				
				Dec	Jan	Feb	Mar	Apr	May	Jun	Jul	Aug	Sep	Oct	Nov	Dec	Jan	Feb	Mar	
<b>KPS Central HS Turf Band Platform ADA Stoops Bleacher</b>	222	06-Jan-25	14-Nov-25	▲ 14-Nov-25, KPS Central HS Turf																
<b>Project Administration</b>	222	06-Jan-25	14-Nov-25	▲ 14-Nov-25, Project Administration																
Bid Phase	19	06-Jan-25	30-Jan-25	▲ Bid Phase																
Pre-Bid Meeting	1	15-Jan-25*	15-Jan-25	✘ Pre-Bid Meeting																
Bids Due	1	30-Jan-25*	30-Jan-25	✘ Bids Due																
Recommendation/Award	15	31-Jan-25	20-Feb-25	▲ Recommendation/Award																
Notice To Proceed	1	21-Feb-25	21-Feb-25	✘ Notice To Proceed																
Submittals	120	24-Feb-25	12-Aug-25	▲ Submittals																
Color Charts	25	24-Feb-25	28-Mar-25	▲ Color Charts																
Mobilization	2	21-Mar-25	24-Mar-25	▲ Mobilization																
Procure Band Tower	60	07-Apr-25	30-Jun-25	▲ Procure Band Tower																
Procure Turf	60	05-May-25	29-Jul-25	▲ Procure Turf																
Band Tower Punchlist	1	03-Sep-25	03-Sep-25	✘ Band Tower Punchlist																
Correct Band Tower Punchlist	21	04-Sep-25	02-Oct-25	▲ Correct Band Tower Punchlist																
Turf Punchlist	2	12-Sep-25	15-Sep-25	▲ Turf Punchlist																
Correct Turf Punchlist	15	16-Sep-25	06-Oct-25	▲ Correct Turf Punchlist																
Owner Occupy	1	07-Oct-25	07-Oct-25	✘ Owner Occupy																
Press Box Punchlist	1	14-Oct-25	14-Oct-25	✘ Press Box Punchlist																
Final Inspection	2	15-Oct-25	16-Oct-25	▲ Final Inspection																
Correct Press Box Punchlist	21	15-Oct-25	12-Nov-25	▲ Correct Press Box Punchlist																
Demobilize	2	13-Nov-25	14-Nov-25	✘ Demobilize																
<b>Milestones</b>	139	25-Mar-25	08-Oct-25	▲ 08-Oct-25, Milestones																
Start Construction	1	25-Mar-25	25-Mar-25	▲ Start Construction																
Project Completion	1	08-Oct-25	08-Oct-25	✘ Project Completion																
<b>Pre-Installation Meetings</b>	71	23-Jun-25	01-Oct-25	▲ 01-Oct-25, Pre-Installation Meetings																
Site Clearing/Earth Moving	1	23-Jun-25	23-Jun-25	▲ Site Clearing/Earth Moving																
Cast In Place Concrete	1	25-Jun-25	25-Jun-25	▲ Cast In Place Concrete																
Masonry	1	15-Jul-25	15-Jul-25	▲ Masonry																
Band Tower	1	05-Aug-25	05-Aug-25	▲ Band Tower																
Synthetic Turf	1	02-Sep-25*	02-Sep-25	✘ Synthetic Turf																
Metal Soffit Panels	1	03-Sep-25	03-Sep-25	✘ Metal Soffit Panels																
Aluminum Windows	1	01-Oct-25	01-Oct-25	✘ Aluminum Windows																
<b>Sitework</b>	120	25-Mar-25	11-Sep-25	▲ 11-Sep-25, Sitework																
<b>Band Practice Field</b>	29	25-Mar-25	02-May-25	▲ 02-May-25, Band Practice Field																

 Actual Work  
 Remaining Work  
 Critical Remaining Work  
 Milestone  
 Summary



Activity Name	Original Duration	Start	Finish	2025												2026							
				Dec	Jan	Feb	Mar	Apr	May	Jun	Jul	Aug	Sep	Oct	Nov	Dec	Jan	Feb	Mar				
Soil Erosion and Sediment Control	3	25-Mar-25	27-Mar-25																				
Temporary Fencing	3	28-Mar-25	01-Apr-25																				
Site Demolition	3	02-Apr-25	04-Apr-25																				
Relocate Existing Items	2	07-Apr-25	08-Apr-25																				
Rough Grade	7	09-Apr-25	17-Apr-25																				
Underdrains	6	18-Apr-25	25-Apr-25																				
Final Grading	3	28-Apr-25	30-Apr-25																				
Seeding	2	01-May-25	02-May-25																				
<b>Concrete at Entrances</b>	<b>20</b>	<b>09-Jun-25</b>	<b>07-Jul-25</b>																				
Remove Concrete	12	09-Jun-25*	24-Jun-25																				
Form/Pour Concrete	8	25-Jun-25	07-Jul-25																				
<b>Football Field</b>	<b>72</b>	<b>02-Jun-25</b>	<b>11-Sep-25</b>																				
Soil Erosion and Sediment Control	5	02-Jun-25*	06-Jun-25																				
Construction Entrance	2	02-Jun-25	03-Jun-25																				
Track Protection	2	04-Jun-25	05-Jun-25																				
Demolition	5	06-Jun-25	12-Jun-25																				
Strip Topsoil/Excavate Subsoils	10	06-Jun-25	19-Jun-25																				
Temporary Fencing	3	09-Jun-25	11-Jun-25																				
Replace Handrails	15	13-Jun-25	03-Jul-25																				
Adjust Rims of Existing Structures	3	20-Jun-25	24-Jun-25																				
Fill To Subgrade	7	20-Jun-25	30-Jun-25																				
Perimeter Drain Tile	5	01-Jul-25	08-Jul-25																				
Concrete Turf Anchor	10	07-Jul-25	18-Jul-25																				
Fencing	10	07-Jul-25	18-Jul-25																				
Flat Drain	10	09-Jul-25	22-Jul-25																				
Aggregate Drainage Stone	10	23-Jul-25	05-Aug-25																				
Shock Pad	5	06-Aug-25	12-Aug-25																				
Clean/Vac Drains and Structures	3	06-Aug-25	08-Aug-25																				
Synthetic Turf	15	13-Aug-25	03-Sep-25																				
Rubber/Sand Infill of Turf	3	04-Sep-25	08-Sep-25																				
Remove Track Protection	2	09-Sep-25	10-Sep-25																				
Site Restoration	3	09-Sep-25	11-Sep-25																				
<b>Pressbox</b>	<b>79</b>	<b>23-Jun-25</b>	<b>13-Oct-25</b>																				
Excavation	5	23-Jun-25*	27-Jun-25																				
Footings	2	30-Jun-25	01-Jul-25																				

- Actual Work
- Remaining Work
- Critical Remaining Work
- Milestone
- Summary

**224010.04 - KPS Central HS Turf Band Platform ADA Stoops Bleachers**  
**Guideline Schedule - 06-Jan-25**  
Page 2 of 3



Activity Name	Original Duration	Start	Finish	2025												2026				
				Dec	Jan	Feb	Mar	Apr	May	Jun	Jul	Aug	Sep	Oct	Nov	Dec	Jan	Feb	Mar	
Concrete Foundation Walls	4	02-Jul-25	08-Jul-25									▲▼	Concrete Foundation Walls							
Backfill/Compact Foundations	4	09-Jul-25	14-Jul-25									▲▼	Backfill/Compact Foundations							
CMU Walls	20	15-Jul-25	11-Aug-25									▬	CMU Walls							
Electrical Rough In Walls	20	15-Jul-25	11-Aug-25									▲▼	Electrical Rough In Walls							
Wood Framing	10	12-Aug-25	25-Aug-25									▲▼	Wood Framing							
Spiral Staircase	6	26-Aug-25	03-Sep-25									▲▼	Spiral Staircase							
Electrical Rough In Ceilings	6	26-Aug-25	03-Sep-25									▲▼	Electrical Rough In Ceilings							
Sheathing	5	26-Aug-25	02-Sep-25									▲▼	Sheathing							
Roofing	4	03-Sep-25	08-Sep-25									▲▼	Roofing							
Siding/Soffit Panels	4	03-Sep-25	08-Sep-25									▲▼	Siding/Soffit Panels							
Drywall	10	09-Sep-25	22-Sep-25									▲▼	Drywall							
Painting	4	23-Sep-25	26-Sep-25									▲▼	Painting							
Metal Countertops	2	29-Sep-25	30-Sep-25									▲▼	Metal Countertops							
Doors/Windows	5	01-Oct-25	07-Oct-25									▲▼	Doors/Windows							
Flooring	4	08-Oct-25	13-Oct-25									▲▼	Flooring							
<b>Band Tower</b>	24	30-Jul-25	02-Sep-25									▲▼	02-Sep-25, Band Tower							
Excavation	4	30-Jul-25	04-Aug-25									▲▼	Excavation							
Footings	5	05-Aug-25	11-Aug-25									▲▼	Footings							
Structural Steel	4	12-Aug-25	15-Aug-25									▲▼	Structural Steel							
Stairs	3	18-Aug-25	20-Aug-25									▲▼	Stairs							
Security Screens	5	21-Aug-25	27-Aug-25									▲▼	Security Screens							
Site Concrete	3	28-Aug-25	02-Sep-25									▲▼	Site Concrete							

- ▬ Actual Work
- ▲▼ Remaining Work
- ▬ Critical Remaining Work
- ◆ Milestone
- ▬ Summary

**224010.04 - KPS Central HS Turf Band Platform ADA Stoops Bleachers**

**Guideline Schedule - 06-Jan-25**





Start Band Practice Field March 25, 2025

Temporary Fencing

Start Press Boxes June 23, 2025

Construction Access Drive

Track Protection

Temporary Fencing

Dumpsters

Temporary Gates

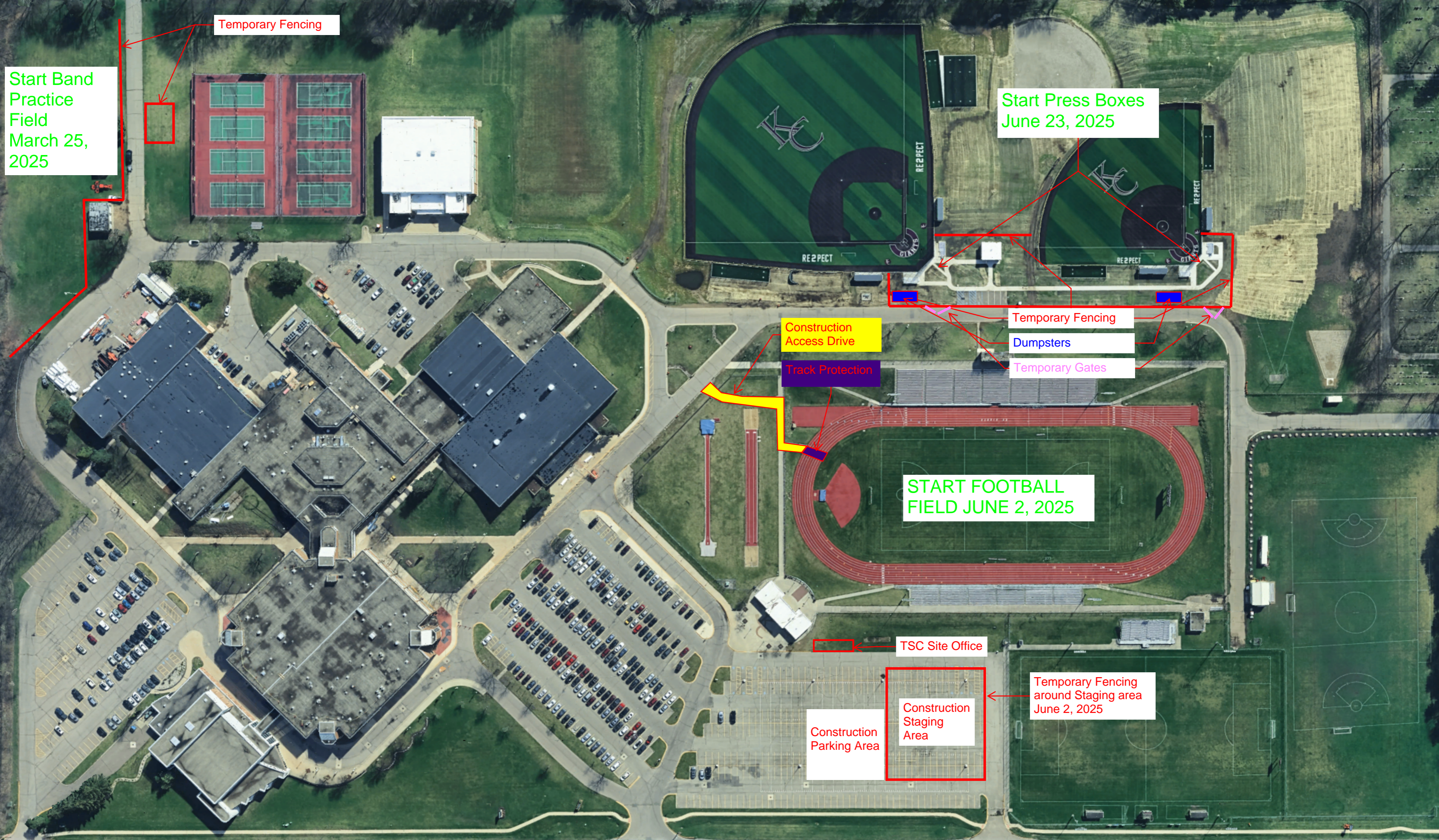
START FOOTBALL FIELD JUNE 2, 2025

TSC Site Office

Temporary Fencing around Staging area June 2, 2025

Construction Parking Area

Construction Staging Area





## TABLE OF CONTENTS

Refer to Construction Manager's Project Manual issued by The Skillman Corporation for additional procurement, contracting, and general requirements.

### DIVISION 00 — PROCUREMENT AND CONTRACTING REQUIREMENTS

- 00 3100 - AVAILABLE PROJECT INFORMATION
- 00 6324 - BIM TRANSFER WAIVER
- 00 6325 - SUBSTITUTION DURING CONSTRUCTION REQUEST FORM

### DIVISION 01 — GENERAL REQUIREMENTS

- 01 2200 - UNIT PRICES
- 01 2300 - ALTERNATES
- 01 2500 - SUBSTITUTION PROCEDURES
- 01 2600 - CONTRACT MODIFICATION PROCEDURES
- 01 2900 - PAYMENT PROCEDURES
- 01 3100 - PROJECT MANAGEMENT AND COORDINATION
- 01 3300 - SUBMITTAL PROCEDURES
- 01 4000 - QUALITY REQUIREMENTS
- 01 4200 - REFERENCES
- 01 6000 - PRODUCT REQUIREMENTS
- 01 7300 - EXECUTION
- 01 7329 - CUTTING AND PATCHING
- 01 7700 - CLOSEOUT PROCEDURES
- 01 7823 - OPERATION AND MAINTENANCE DATA
- 01 7839 - PROJECT RECORD DOCUMENTS
- 01 7900 - DEMONSTRATION AND TRAINING

### DIVISION 02 — EXISTING CONDITIONS

- 02 4113 - DEMOLITION
- 02 4119 - SELECTIVE STRUCTURE DEMOLITION

### DIVISION 03 — CONCRETE

- 03 3000 - CAST-IN-PLACE CONCRETE
- 03 3053 - CONCRETE TURF ANCHOR
- 03 6000 - POST INSTALLED ANCHORS

### DIVISION 04 — MASONRY

- 04 2000 - UNIT MASONRY

**DIVISION 05 — METALS**

05 5000 - METAL FABRICATIONS  
05 5119 - METAL GRATING STAIRS  
05 5213 - PIPE AND TUBE RAILINGS

**DIVISION 06 — WOOD, PLASTICS, AND COMPOSITES**

06 1000 - ROUGH CARPENTRY  
06 1050 - TURF WOOD NAILER  
06 1600 - SHEATHING

**DIVISION 07 — THERMAL AND MOISTURE PROTECTION**

07 1900 - WATER REPELLENTS  
07 2500 - WEATHER BARRIERS  
07 4293 - SOFFIT PANELS  
07 4646 - FIBER-CEMENT SIDING  
07 5423 - THERMOPLASTIC POLYOLEFIN (TPO) ROOFING  
07 6200 - SHEET METAL FLASHING AND TRIM  
07 7100 - ROOF SPECIALTIES  
07 9200 - JOINT SEALANTS

**DIVISION 08 — OPENINGS**

08 3113 - ACCESS DOORS AND FRAMES  
08 3313 - COILING COUNTER DOORS  
08 4113 - ALUMINUM-FRAMED ENTRANCES AND STOREFRONTS  
08 5113 - ALUMINUM WINDOWS  
08 7100 - DOOR HARDWARE  
08 8000 - GLAZING

**DIVISION 09 — FINISHES**

09 6500 - RESILIENT FLOORING  
09 9113 - EXTERIOR PAINTING  
09 9123 - INTERIOR PAINTING  
09 9600 - HIGH-PERFORMANCE COATINGS

**DIVISION 10 — SPECIALTIES**

10 7516 - GROUND-SET FLAGPOLES

**DIVISION 11 — EQUIPMENT**

11 6834 - FOOTBALL GOAL POST  
11 6836 - PORTABLE SOCCER & LAX GOALS

11 6843 - EXTERIOR SCOREBOARD

**DIVISION 12 — FURNISHINGS**

12 3616 - METAL COUNTERTOPS

**DIVISION 13 — SPECIAL CONSTRUCTION**

13 3420 - MANUFACTURED BAND TOWER STRUCTURE

**DIVISION 26 — ELECTRICAL**

26 0500 - COMMON WORK RESULTS FOR ELECTRICAL  
26 0519 - LOW-VOLTAGE ELECTRICAL POWER CONDUCTORS AND CABLES  
26 0526 - GROUNDING AND BONDING FOR ELECTRICAL SYSTEMS  
26 0529 - HANGERS AND SUPPORTS FOR ELECTRICAL SYSTEMS  
26 0533 - RACEWAYS AND BOXES FOR ELECTRICAL SYSTEMS  
26 0543 - UNDERGROUND DUCTS AND RACEWAYS FOR ELECTRICAL SYSTEMS  
26 0544 - SLEEVES AND SLEEVE SEALS FOR ELECTRICAL RACEWAYS AND CABLING  
26 0553 - IDENTIFICATION FOR ELECTRICAL SYSTEMS  
26 0923 - LIGHTING CONTROL DEVICES  
26 2726 - WIRING DEVICES  
26 5100 - INTERIOR LIGHTING  
26 5600 - EXTERIOR LIGHTING

**DIVISION 27 — COMMUNICATIONS**

27 5114 - PA SYSTEM - SINGLE POINT SPEAKER  
27 5119 - FIELD UTILITY BOXES

**DIVISION 31 — EARTHWORK**

31 1000 - SITE CLEARING  
31 2000 - EARTH MOVING  
31 2010 - EARTHWORK ATHLETICS  
31 3219 - GEOTEXTILE FABRIC

**DIVISION 32 — EXTERIOR IMPROVEMENTS**

32 1123 - AGGREGATE DRAINAGE LAYER  
32 1313 - CONCRETE  
32 1373 - CONCRETE JOINTS  
32 1818 - SYNTHETIC TURF - BLEND  
32 1852 - PERFORMANCE SHOCK PAD  
32 3130 - CHAIN FENCE - VINYL  
32 9119 - TOPSOIL  
32 9200 - TURFS AND GRASSES



32 9227 - GENERAL LAWN RESTORATION

**DIVISION 33 — UTILITIES**

33 4100 - STORM

33 4413 - MANHOLES, CATCH BASINS AND SIMILAR STRUCTURES

33 4605 - SUB DRAINAGE SYSTEMS - SAND

33 4615 - SUB DRAINAGE SYSTEMS - TURF DRAIN TILE

## SECTION 10 7516 - GROUND-SET FLAGPOLES

### PART 1 - GENERAL

#### 1.1 SUMMARY

- A. Section includes ground-set flagpoles made from aluminum.

#### 1.2 ACTION SUBMITTALS

- A. Product Data: For each type of product.
  - 1. Include construction details, material descriptions, dimensions of individual components and profiles, operating characteristics, fittings, accessories, and finishes for flagpoles.
- B. Shop Drawings: For flagpoles.
  - 1. Include plans, elevations, and attachment details. Show general arrangement, jointing, fittings, accessories, grounding, anchoring, and support.
  - 2. Include section, and details of foundation system.
- C. Delegated-Design Submittal: For flagpoles.

#### 1.3 CLOSEOUT SUBMITTALS

- A. Operation and Maintenance Data: For flagpoles to include in operation and maintenance manuals.

#### 1.4 DELIVERY, STORAGE, AND HANDLING

- A. Spiral wrap flagpoles with heavy paper and enclose in a hard fiber tube or other protective container.

### PART 2 - PRODUCTS

#### 2.1 MANUFACTURERS

- A. Source Limitations: Obtain flagpoles as complete units, including fittings, accessories, bases, and anchorage devices, from single source from single manufacturer.

#### 2.2 PERFORMANCE REQUIREMENTS

- A. Delegated Design: Engage a qualified professional engineer, as defined in Section 01 4000 "Quality Requirements," to design flagpole assemblies.



- B. Structural Performance: Flagpole assemblies, including anchorages and supports, shall withstand design loads indicated within limits and under conditions indicated.
1. Wind Loads: Determine according to NAAMM FP 1001. Basic wind speed for Project location is 90 mph(145 kph).
  2. Base flagpole design on polyester flags of maximum standard size suitable for use with flagpole or flag size indicated, whichever is more stringent.

## 2.3 ALUMINUM FLAGPOLES

- A. Aluminum Flagpoles: Cone-tapered flagpoles fabricated from seamless extruded tubing complying with ASTM B 241/B 241M, Alloy 6063, with a minimum wall thickness of 3/16 inch.
1. Manufacturers: Subject to compliance with requirements, provide products by one of the following:
    - a. American Flagpole; a Kearney-National Inc. company.
    - b. Concord Industries, Inc.
    - c. Eder Flag Manufacturing Company, Inc.
    - d. Kalamazoo Flag Company
    - e. Pole-Tech Company Inc.
  2. Exposed Height: 40 feet.
  3. Finial: Finial ball light.
  4. Halyard: Internal winch system for one flag, 6 by 10 feet.
  5. Construct flagpoles in one piece if possible. If more than one piece is necessary, comply with the following:
    - a. Fabricate shop and field joints without using fasteners, screw collars, or lead caulking.
    - b. Provide flush hairline joints using self-aligning, snug-fitting, internal sleeves.
  6. Metal Foundation Tube: Manufacturer's standard corrugated-steel foundation tube, 0.060-inch wall thickness with 3/16-inch steel bottom plate and support plate; 3/4-inch- diameter, steel ground spike; and steel centering wedges welded together. Galvanize foundation tube after assembly. Furnish loose hardwood wedges at top of foundation tube for plumbing pole. Flashing Collar: Same material and finish as flagpole.

## 2.4 FITTINGS

- A. Finial Ball Light: Flag light in finial ball and photo eye control as follows:
1. Product: Provide Flagpole Warehouse; External Heavy Duty Flagpole Beacon.
  2. Light Type: LED.
- B. Internal Halyard, Winch System: Manually operated winch with control stop device and removable handle, stainless-steel cable halyard, and concealed revolving truck assembly with plastic-coated counterweight and sling. Furnish flush access door secured with cylinder lock. Finish truck assembly to match flagpole.
1. Halyard Flag Snaps: Stainless-steel swivel snap hooks with neoprene or vinyl covers.

**2.5 MISCELLANEOUS MATERIALS**

- A. Drainage Material: Crushed stone, or crushed or uncrushed gravel; coarse aggregate.
- B. Sand: ASTM C 33/C 33M, fine aggregate.
- C. Elastomeric Joint Sealant: Single-component neutral-curing silicone joint sealant complying with requirements in Section 07 9200 "Joint Sealants."
- D. Bituminous Paint: Cold-applied asphalt emulsion complying with ASTM D 1187/D 1187M.

**2.6 FINISHES**

- A. Aluminum Finishes: Clear Anodic Finish: AAMA 611, AA-M12C22A41.

**PART 3 - EXECUTION**

**3.1 PREPARATION**

- A. Prepare uncoated metal flagpoles that are set in foundation tubes by painting below-grade portions with a heavy coat of bituminous paint.
- B. Foundation Excavation: Excavate to neat clean lines in undisturbed soil. Remove loose soil and foreign matter from excavation and moisten earth before placing concrete. Place and compact drainage material at excavation bottom.
- C. Foundation Tube: Place foundation tube, center, and brace to prevent displacement during concreting. Place concrete. Plumb and level foundation tube and allow concrete to cure.
- D. Place concrete, as specified in Section 03 3000 "Cast-in-Place Concrete."
- E. Trowel exposed concrete surfaces to a smooth, dense finish, free of trowel marks, and uniform in texture and appearance. Provide positive slope for water runoff to perimeter of concrete base.

**3.2 FLAGPOLE INSTALLATION**

- A. General: Install flagpoles where indicated and according to Shop Drawings and manufacturer's written instructions.
- B. Foundation Tube: Place flagpole in tube, seated on bottom plate between steel centering wedges, and install hardwood wedges to secure flagpole in place. Place and compact sand in foundation tube and remove hardwood wedges. Seal top of foundation tube with a 2-inch layer of elastomeric joint sealant and cover with flashing collar.

**END OF SECTION 10 7516**



## ADDENDUM NO. 1

<b>DATE OF ISSUANCE:</b>	<b>January 17, 2025</b>
<b>PROJECT:</b>	<b>Kalamazoo Central High School Athletics Project 2432 N. Drake Road Kalamazoo, MI 49009</b>
<b>OWNER:</b>	<b>Kalamazoo Public Schools</b>
<b>ARCHITECT'S PROJECT NO.:</b>	<b>23-623.00</b>
<b>ORIGINAL BID ISSUE DATE:</b>	<b>December 20, 2024</b>

---

### SCOPE OF WORK

This Addendum includes changes to, or clarifications of, the original Bidding Documents and any previously issued addenda, and shall be included in the Bid. All of these Addendum items form a part of the Contract Documents. The Bidder shall acknowledge receipt of this Addendum in the appropriate space provided on the Bid Form. Failure to do so may result in disqualification of the Bid.

### DOCUMENTS INCLUDED IN THIS ADDENDUM

This Addendum includes **3** pages of text and the following documents:

- Bidding Documents: **NA**
- Contract Conditions: **NA**
- Specification Sections: **00 0110, 10 7516**
- Drawings: **C102, C202, C302, L501, L511, L512, L513.1, ES104**

### CHANGES TO PREVIOUSLY ISSUED ADDENDA

None.

### CHANGES TO SPECIFICATIONS

#### **ADD-1 Item No. S-1 - 09 2613 - Gyp Veneer Plaster Spec.**

Omit Specification Section 09 2613 – Gyp Veneer Plastering

Gyp Veneer Plastering is not used on this project.

#### **ADD-1 Item No. S-2 - 10 7516 GROUND SET FLAGPOLES ADDED**

Refer to added Specification Section 10 7516 GROUND SET FLAGPOLES

**ADD-1 Item No. S-3 - Updated TOC**

Refer to updated Specification Table of Contents 00 0110.

**ADD-1 Item No. S-4 - 32 9200 Turfs and Grasses – Omit Alternate Reference.**

Refer to specification section 32 9200 Item 2.5 A, 1 – Omit Reference to Alternate #11. This will not be required for this project.

**CHANGES TO DRAWINGS**

**ADD-1 Item No. D-1 - Existing Drains**

Refer to Sheet(s): L501

Added CB #30 and YD#29 with associated drain lines to be located per note 4 in the Demolition Legend.

**ADD-1 Item No. D-2 - Scoreboard Steel**

Refer to Sheet(s): L511

Revised note to clarify steel sizing intent for future video board addition.

**ADD-1 Item No. D-3 - Turf Graphics**

Refer to Sheet(s): L512, and L513.1

Added a watermark Giant to the d-zone of the turf field and a north arrow to clarify field graphics orientation.

**ADD-1 Item No. D-4 - Added Additional Electrical Ground Boxes**

Refer to Sheet(s): ES104

Text of item. Added two additional ground boxes along with associated conduit to the base of each goal post. Locate opposite from the field [behind the goalpost]. Coordinate exact location in field with owner prior to installation.

**ADD-1 Item No. D-5 - Changes to Alternate Scope**

Refer to Reissued Sheet(s): C102, C202, C302

- Sheet C102 – Added clouding and note regarding all softball and baseball field work to be Alternate # 2.



1.17.2025

Addendum No. 1 // Kalamazoo Central High School Athletics // 23-623.00

3

- Sheet C202 – Added clouding and note regarding all softball and baseball field work to be Alternate # 2.
- Sheet C302 – Added clouding and note regarding all softball and baseball field work to be Alternate # 2.

**END OF ADDENDUM.**