



GIBRALTAR DESIGN
ARCHITECTURE • ENGINEERING • INTERIOR DESIGN

PROJECT
CHESTERTON HS SOCCER FIELD

DUNELAND SCHOOL CORPORATION
CHESTERTON, INDIANA

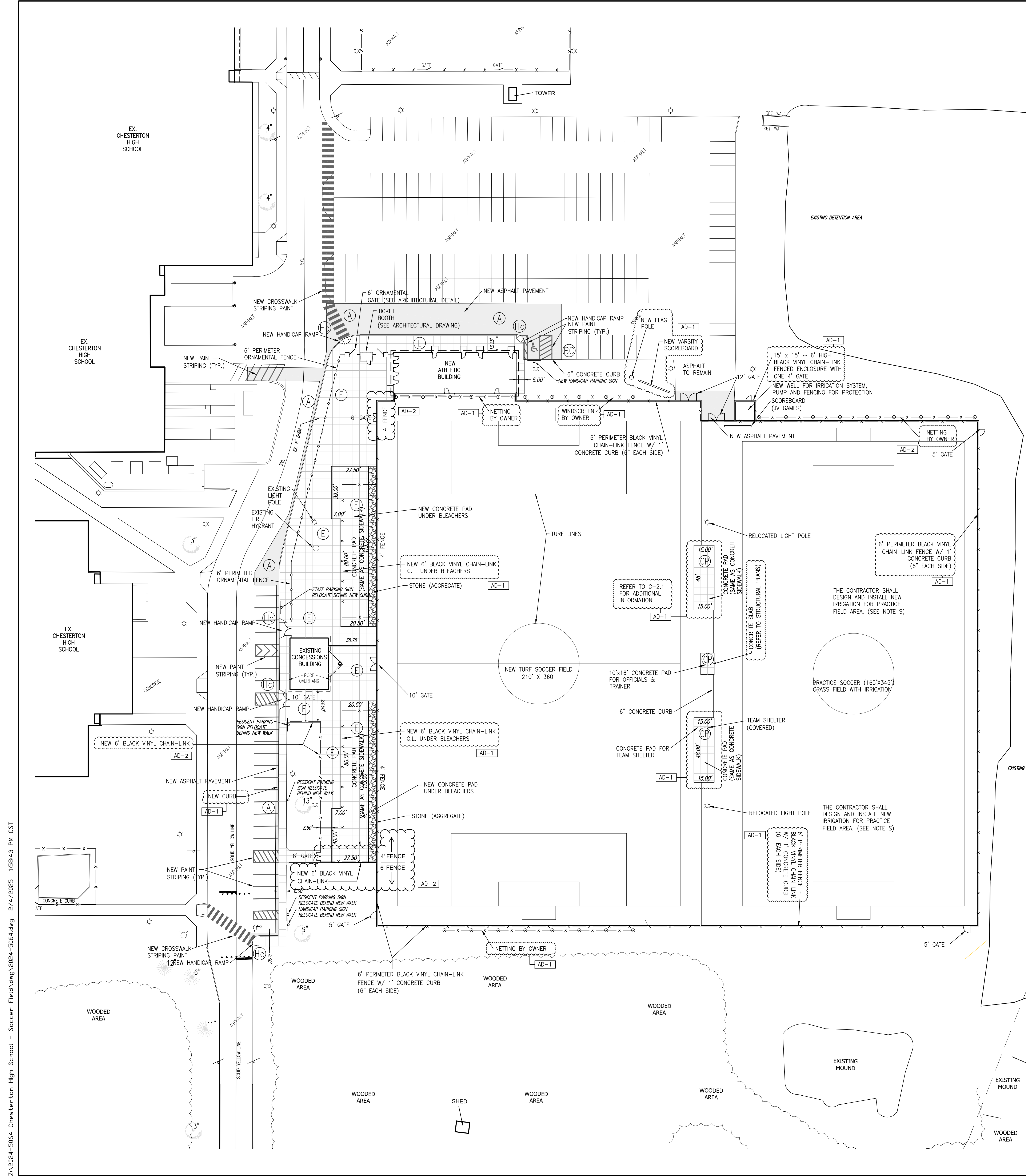
GENERAL CONSTRUCTION NOTES:

- A. CONTRACTOR IS TO VERIFY ALL ELEVATIONS AND NOTIFY CONSTRUCTION MANAGER AND ARCHITECT OF ANY DISCREPANCIES.
- B. UNDERGROUND UTILITIES ARE SHOWN IN APPROXIMATE LOCATIONS BASED ON INFORMATION AT THE TIME OF SURVEY, AND SOME UTILITIES ARE NOT SHOWN. REGARDLESS OF SHOWN OR NOT, THE CONTRACTOR IS RESPONSIBLE FOR DETERMINING EXACT LOCATIONS OF ALL EXISTING UNDERGROUND UTILITIES TO REMAIN AND REPAIRING OR REPLACING ANY DAMAGE DUE TO CONSTRUCTION ACTIVITY. CONTRACTOR IS TO NOTIFY CONSTRUCTION MANAGER AND ARCHITECT OF ANY DISCREPANCIES.
- C. CONTRACTOR IS RESPONSIBLE FOR COSTS ASSOCIATED WITH DISCONNECTING, REMOVING, OR RELOCATING/RECONNECTING EXISTING UTILITIES ALONG WITH CONNECTING NEW UTILITIES ASSOCIATED WITH CONSTRUCTION SCOPE.
- D. VALVES, MANHOLES, HAND-HOLES, UTILITY BOXES, AND SIMILAR STRUCTURES NOT DESIGNATED FOR REMOVAL, SHALL BE PROTECTED AND ADJUSTED TO NEW FINISH ELEVATIONS BY CONTRACTOR.
- E. CONTRACTOR IS TO VERIFY ALL DIMENSIONS, VERTICALLY AND HORIZONTALLY BETWEEN EXISTING AND NEW CONSTRUCTION, AND NOTIFY CONSTRUCTION MANAGER/ARCHITECT IF ANY DISCREPANCIES.
- F. SYNTHETIC TURF SURFACE SHALL BE INSTALLED AT THE GRADES SHOWN FROM TOP EDGE OF NEW CONCRETE CURB AND EXTENDED TO CENTER LINE OF FIELD FROM SIDELINES AND FROM ENDLINES.
- G. CONTRACTOR IS TO PROVIDE TOTAL ARTIFICIAL TURF REPLACEMENT COMPLETE, NEW TURF, NEW PERIMETER CURBING, NEW INFILL, NEW 2X4, PERIMETER TREATED WOOD BLOCKING, AND NEW LOGOS/TEXT IF REQUIRED.
- H. CONTRACTOR IS TO MATCH ALL EXISTING LINWORK AS APPLICABLE AND DESIRED BY OWNER.
- I. CONTRACTOR IS TO COORDINATE AND PROVIDE FOR SUB-TURF ACCESS TO ANY EXISTING VALVES, HAND-HOLES, OR UTILITY BOXES AS REQUIRED.
- J. CONTRACTOR SHALL REMOVE AND REINSTALL EXISTING SOCCER GOALS AS REQUIRED.
- K. CONTRACTOR SHALL PROVIDE A CLEAN SAWCUT LINE AND REMOVE THE MINIMUM AMOUNT OF EXISTING ASPHALT IN ORDER TO INSTALL NEW CONCRETE CURB/SIDEWALK.
- L. CONTRACTOR IS REQUIRED TO MATCH THE EXISTING GRADES TO THE GREATEST DEGREE POSSIBLE.
- M. CONTRACTOR IS TO COORDINATE AND PROVIDE FOR SUB-TURF ACCESS TO ANY EXISTING VALVES, HAND-HOLES OR UTILITY BOXES AS REQUIRED.
- N. CONTRACTOR SHALL PROVIDE NEW SYNTHETIC TURF AND SUB-BASE DRAINAGE SYSTEM TO BE APPROVED BY THE ARCHITECT/ENGINEER PRIOR TO INSTALLATION. THE SUB-BASE DRAINAGE SYSTEM SHALL BE CONNECTED INTO THE STORM SEWER LINE PROVIDED AT THE NORTHWEST CORNER OF THE FIELD.
- O. CONTRACTOR SHALL PROVIDE NEW SCOREBOARD FOR BOTH VARSITY AND JUNIOR VARSITY PLAYING FIELDS IN ACCORDANCE WITH ARCHITECTURAL DESIGN, IN THE LOCATION SHOWN ON THE SITE PLAN.
- P. ALL END LINES AND SIDELINES SHALL BE CONTINUOUS LINES 6" WIDE, TYPICAL ALL OTHER LINES ARE 4" WIDE, TYPICAL.
- Q. CONTRACTOR SHALL PROVIDE NEW FLAGPOLE.
- R. CONTRACTOR SHALL INSTALL NEW FENCING AROUND THE PERIMETER OF THE SITE AS SHOWN. THE FENCING SHALL BE 10 FEET HIGH IN DESIGNATED AREAS.
- S. CONTRACTOR SHALL GRADE NEW PRACTICE FIELD IN ACCORDANCE WITH THE GRADES SHOWN AND PROVIDE AN IRRIGATION SYSTEM THAT SHALL BE APPROVED BY THE ARCHITECT/ENGINEER PRIOR TO INSTALLATION.

LEGEND:

PROPOSED

- (A) TYPICAL ASPHALT
- (CP) CONCRETE PAVEMENT
- (E) CONCRETE SIDEWALK & COMBINED CURB/WALK
- (BC) HIGH-BACK CURB
- (Hc) HANDICAP ACCESS RAMP
- CHAIN LINK FENCE IN CONCRETE CURB HEIGHT VARIES (SEE DETAIL)
- ORNAMENTAL FENCE IN CONCRETE WALK 6' HIGH (SEE DETAIL)
- WINDSCREEN & NETTING (SEE ARCHITECTURAL DETAIL)
- SIGN (RELOCATED OR NEW, SEE TEXT)
- ★ LIGHT POLE (RELOCATED OR EXISTING, SEE TEXT)



Z:\2024-5064 Chesterton High School - Soccer Field.dwg 2/1/2025 1:58:43 PM CST

GIBRALTAR DESIGN
9102 N. Meridian St., Ste. 300
Indianapolis, IN 46260
Homepage: www.GibraltarDesign.com
Email: info@GibraltarDesign.com
Phone: 317.580.5777 Fax: 317.580.5778

PROJECT: 24-134
DATE: 01/20/25
COORDINATED BY: DCT
DRAWN BY: EM DCT
CHECKED BY: DCT

PROFESSIONAL ENGINEER
No. 19868
STATE OF INDIANA
David C. Torrey

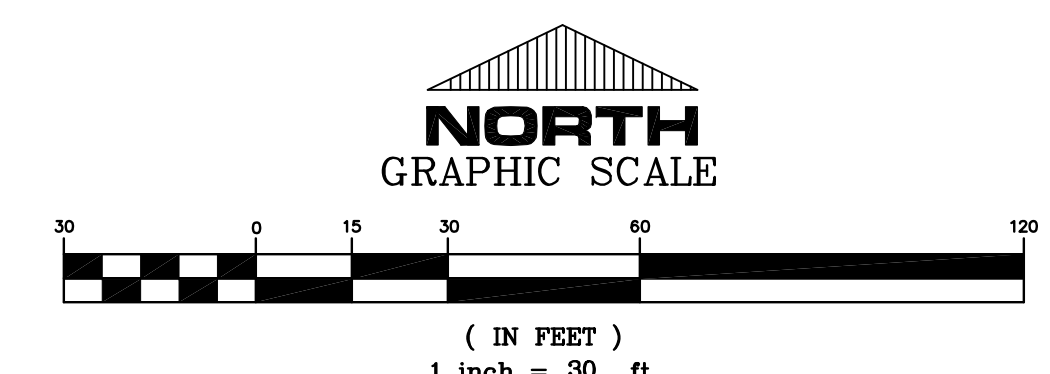
COPYRIGHT NOTICE:
THE CONCEPTS, DESIGNS, PLANS, DETAILS, ETC. SHOWN ON THIS DOCUMENT ARE THE PROPERTY OF GIBRALTAR DESIGN AND WERE CREATED FOR USE ON THIS SPECIFIC PROJECT. NONE OF THIS INFORMATION SHALL BE USED BY ANY PERSON OR FIRM FOR ANY PURPOSE WITHOUT THE EXPRESS WRITTEN CONSENT OF GIBRALTAR DESIGN. THE OWNER MAY RETAIN COPIES FOR INFORMATION AND REFERENCE IN CONNECTION ONLY WITH THIS PROJECT.

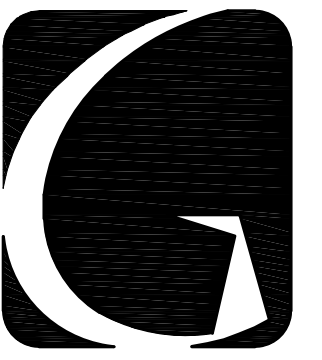
MARK	DATE	ISSUED FOR
AD-1	02/07/25	ADDENDUM NO. 1

DRAWING
SITE PLAN

PROJECT
CHESTERTON HS SOCCER FIELD

SHEET
C-2.0





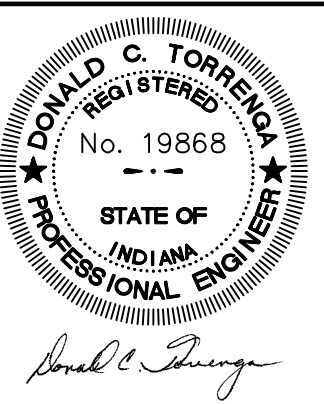
GIBRALTAR
DESIGN
ARCHITECTURE • ENGINEERING • INTERIOR DESIGN

PROJECT
**CHESTERTON HS
SOCCER FIELD**

DUNELAND SCHOOL CORPORATION
CHESTERTON, INDIANA

GIBRALTAR DESIGN
9102 N. Meridian St., Ste. 300
Indianapolis, IN 46260
Homepage: www.GibraltarDesign.com
Email: info@GibraltarDesign.com
Phone: 317.580.5777 Fax: 317.580.5778

PROJECT
24-134
DATE
01/20/25
COORDINATED BY
DCT
DRAWN BY
EM DCT
CHECKED BY
DCT



COPYRIGHT NOTICE:
THE CONCEPTS, DESIGN, PLANS, DETAILS, ETC. SHOWN ON THIS DOCUMENT ARE THE PROPERTY OF GIBRALTAR DESIGN AND WERE CREATED FOR USE ON THIS SPECIFIC PROJECT. NONE OF THIS INFORMATION SHALL BE USED BY ANY OTHER PERSON OR FIRM FOR ANY PURPOSE WITHOUT THE EXPRESS WRITTEN CONSENT OF GIBRALTAR DESIGN. THE OWNER MAY RETAIN COPIES FOR INFORMATION AND REFERENCE IN CONNECTION ONLY WITH THIS PROJECT.

MARK	DATE	ISSUED FOR
AD-2	02/12/25	ADDENDUM NO. 2

DRAWING
**STORM SEWERS & GRADING
PLAN**

PROJECT
CHESTERTON HS SOCCER FIELD

SHEET
C-4.0

MASS GRADING

Ⓐ AMOUNT OF FILL IN DETENTION AREA EQUALS 48 CUBIC FEET BY GRID COMPOSITE AND AVERAGE END AREA CALCULATION. THIS REPRESENTS THE AREA OF DETENTION LOST DURING CONSTRUCTION

Ⓑ AMOUNT OF EXCAVATION IN DETENTION AREA EQUALS 80 CUBIC FEET BY GRID COMPOSITE AND AVERAGE END AREA CALCULATION. THIS REPRESENTS THE AREA OF DETENTION GAINED DURING CONSTRUCTION

PIPE CROSSING SCHEDULE

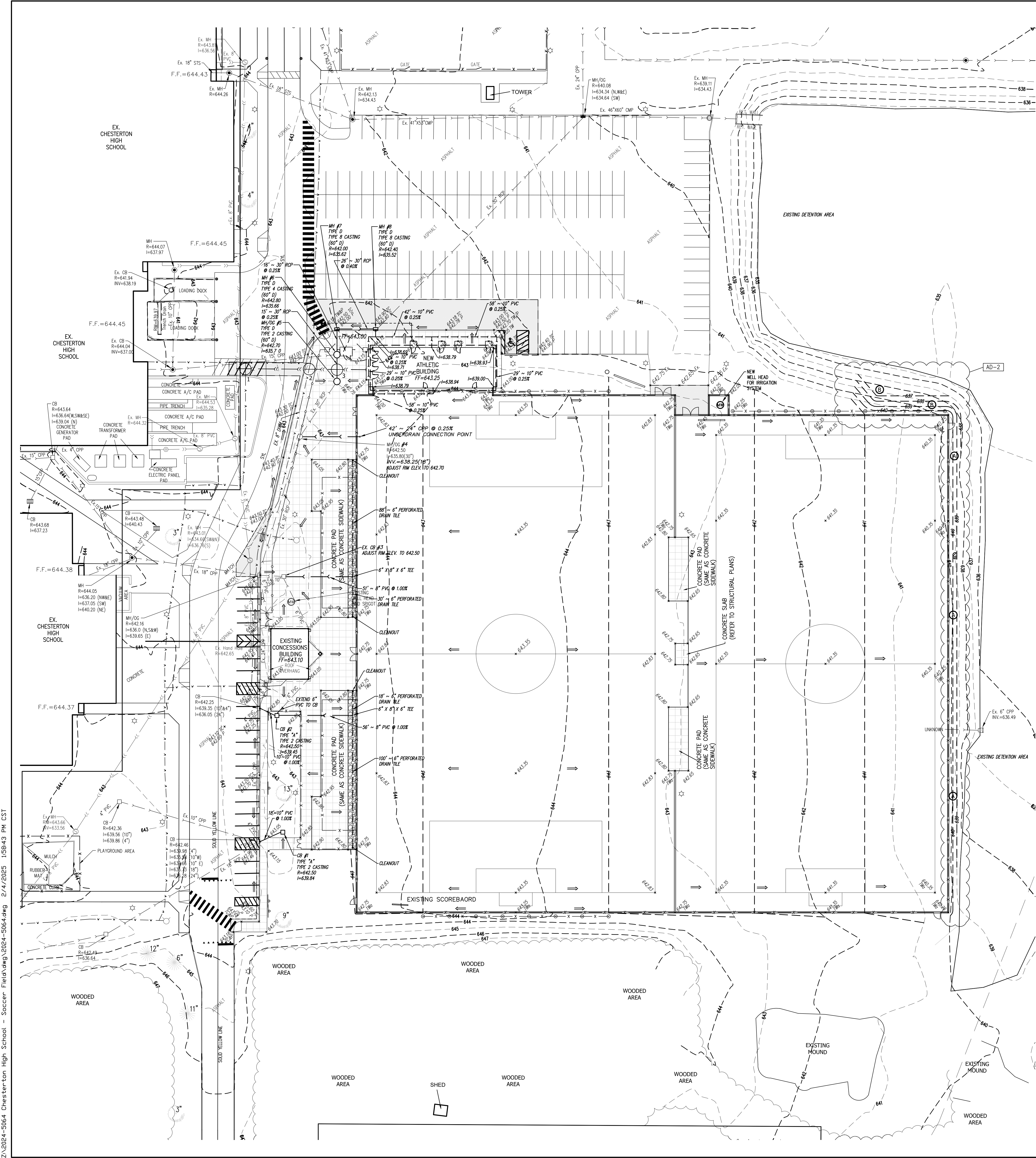
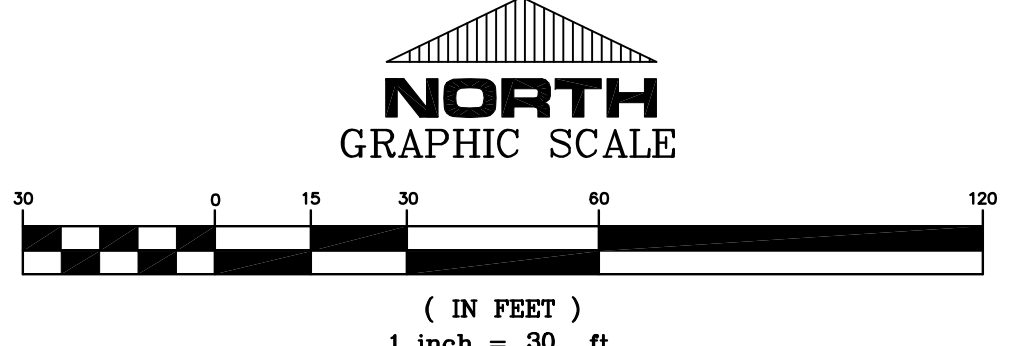
CROSSING NO.	PIPE & TYPE SIZE	TOP OF PIPE	BOTTOM OF PIPE	PIPE & TYPE SIZE	TOP OF PIPE	BOTTOM OF PIPE	CLEARANCE BETWEEN PIPES *
①	8" DIWM	637.90±	637.00±	6" PVC	639.90	639.20	1.20'±
②	8" DIWM	637.90±	637.00±	6" PVC	640.12	639.42	1.52'±
③	30" RCP	638.40±	635.40±	6" PVC	640.27	639.57	1.17'±

LEGEND
PROPOSED

- SANITARY SEWER MANHOLE
- STORM SEWER MANHOLE
- CATCH BASIN
- ⊙ FIRE HYDRANT
- ⊕ WATER VALVE
- ~ GRADE PROPOSED
- FF=000.00 FINISHED FLOOR ELEVATION
- >—> STORM SEWER
- >>—>> SANITARY SEWER
- >>>—>>> WATER MAIN
- TW TOP OF SIDEWALK
- P TOP OF PAVEMENT
- TW/P TOP OF SIDEWALK AND PAVEMENT
- TC TOP OF CURB
- TWa TOP OF WALL
- - - 641 - - - NEW CONTOUR ELEVATION

GENERAL PLAN NOTES:

A. THE CONTRACTOR IS RESPONSIBLE FOR ACTUAL SUB-DRAINAGE DESIGN AND CONNECTION AS INDICATED ON DRAWING AND PER SPECIFICATION.



Z:\2024-5064 Chesterton High School - Soccer Field.dwg 2/1/2025 1:58:43 PM CST

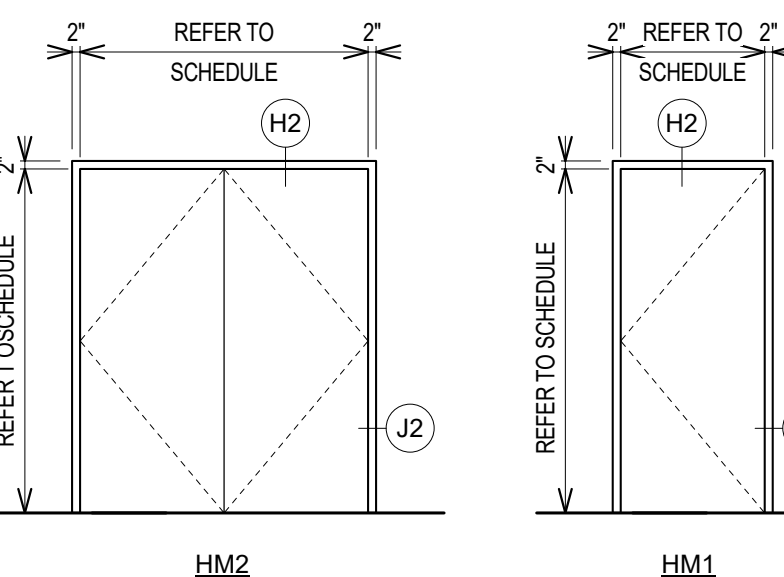


GIBALTAR
DESIGN
ARCHITECTURE - ENGINEERING - INTERIOR DESIGN

PROJECT:
**CHESTERTON HS
SOCCER VENUE
IMPROVEMENTS
AND RELATED
WORK**
DUNELAND SCHOOL
CORPORATION
2125 11TH ST, CHESTERTON, IN
46304

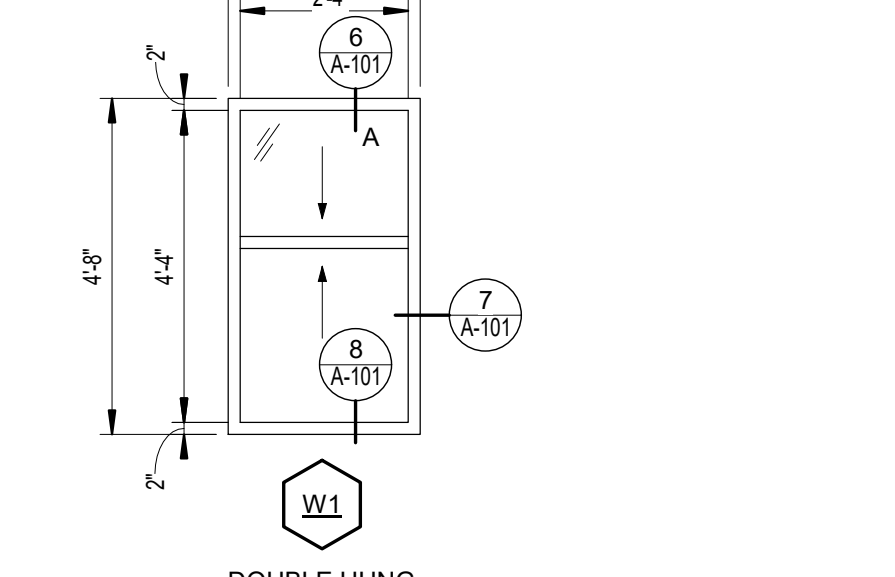
NOTES - HOLLOW METAL (HM)

- FOR HOLLOW METAL HEAD, JAMB AND SILL DETAILS REFER TO WALL SECTIONS AND HOLLOW METAL (HM) FRAME PROFILES
- PROVIDE SEALANT AROUND PERIMETER OF ALL FRAMES
- DIMENSIONS SHOWN ARE NOMINAL. FIELD VERIFY ALL DIMENSIONS SHOWN PRIOR TO FABRICATION AND INSTALLATION.
- JAMB, HEAD, AND SILL DO NOT SHOW WALL CONSTRUCTION. SEE FLOOR PLAN FOR WALL MATERIALS. SEE ROOM FINISH SCHEDULE FOR WALL FINISHES.
- PROVIDE GLAZING AND GLASS STOPS AS REQUIRED.



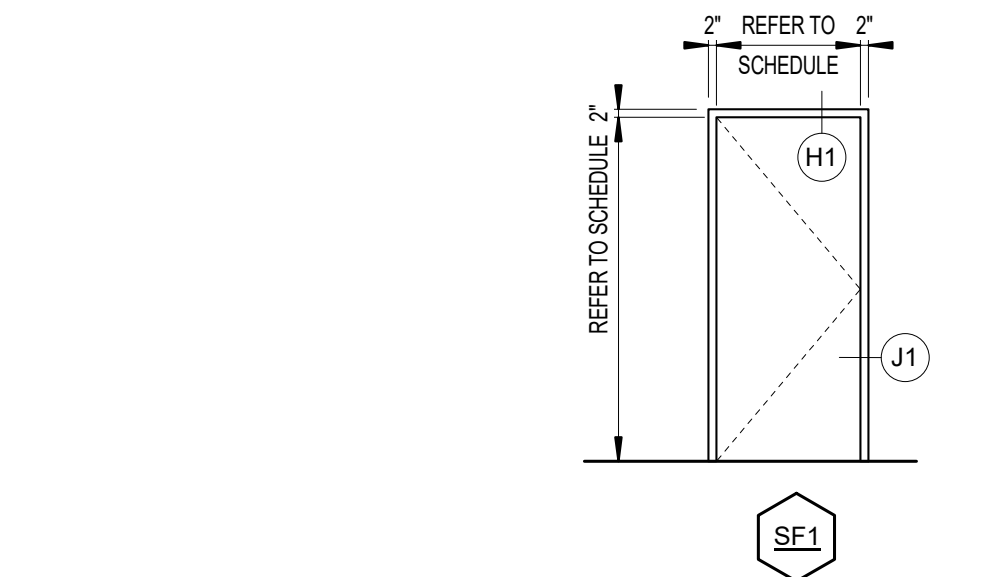
NOTES - ALUMINUM WINDOWS (W)

- PROVIDE SHIM SPACE, BACKER ROD AND SEALANT AROUND PERIMETER OF ALL WINDOW FRAMING WHERE FRAMING ABUTS DISSIMILAR MATERIALS.
- PROVIDE FOAM INSULATION IN SHIM SPACE AROUND PERIMETER OF ALL EXTERIOR WINDOW FRAMING.
- DIMENSIONS SHOWN ARE NOMINAL. FIELD VERIFY ALL DIMENSIONS SHOWN PRIOR TO FABRICATION AND INSTALLATION.
- ALL FRAMES IN EXTERIOR WALLS SHALL BE THERMALLY BROKEN WITH 1" INSULATED GLAZING.
- ALL GLAZING SHALL CONFORM TO STATE AND LOCAL CODES.

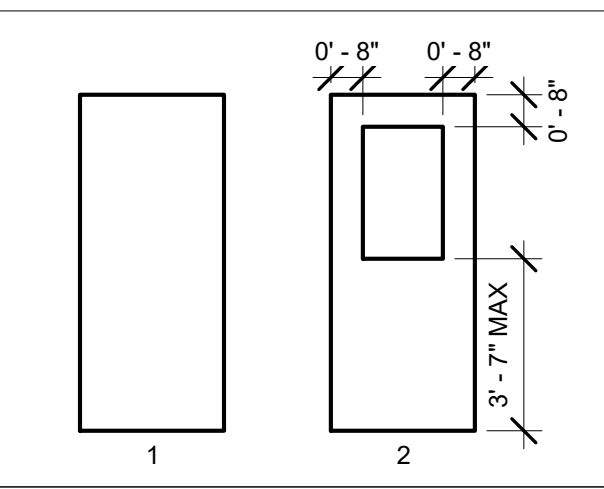


NOTES - ALUMINUM STOREFRONT (SF)

- FOR STOREFRONT HEAD, JAMB AND SILL DETAILS REFER TO WALL SECTIONS AND DETAILS
- PROVIDE SHIM SPACE, BACKER ROD, AND SEALANT AROUND PERIMETER OF ALL FRAMES WHERE FRAMING ABUTS DISSIMILAR MATERIALS.
- PROVIDE FOAM INSULATION IN SHIM SPACE AROUND PERIMETER OF ALL EXTERIOR STOREFRONT FRAMING.
- DIMENSIONS SHOWN ARE NOMINAL. FIELD VERIFY ALL DIMENSIONS SHOWN PRIOR TO FABRICATION AND INSTALLATION.
- ALL FRAMES IN EXTERIOR WALLS SHALL BE THERMALLY BROKEN WITH 1" INSULATED GLAZING.
- REFER TO DOOR AND FRAME SCHEDULE FOR GLASS SCHEDULE.
- ALL GLAZING SHALL CONFORM TO STATE AND LOCAL CODES.



GLASS SCHEDULE	
MK	GLASS TYPES
A	1" INSULATED GLASS



LOUVER SCHEDULE	
MK	LOUVER SIZES
A	

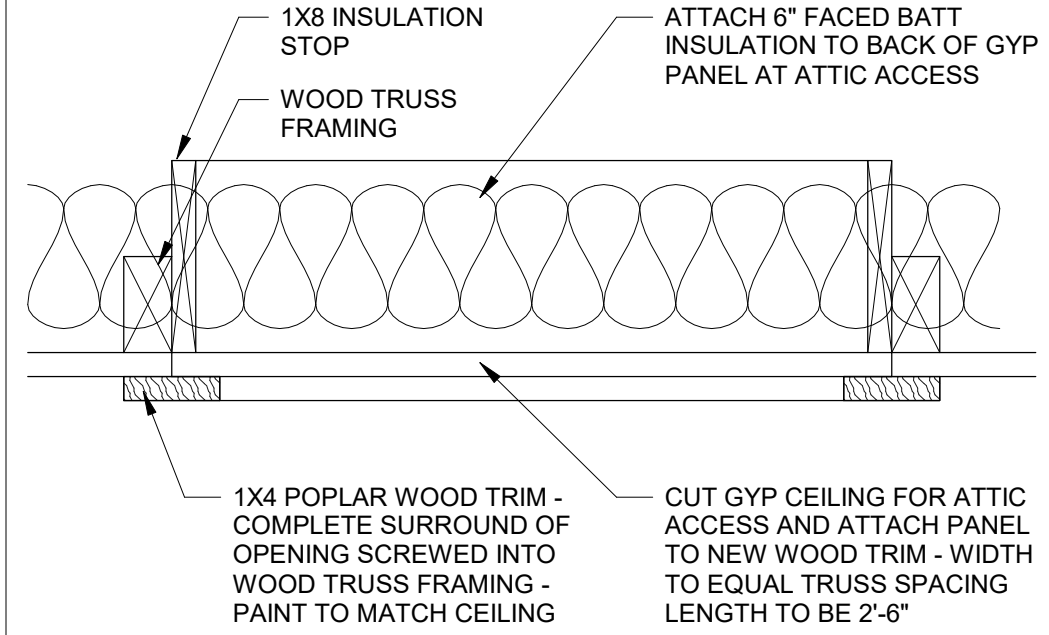
DOOR AND FRAME SCHEDULE																
NO	DESCRIPTION	TYPE	WIDTH	HEIGHT	MATERIAL	GLASS			FRAME			LABEL	HARDWARE	NOTES		
						DOOR	SIDE LGT	TRAN	MAT'L	WIDTH	JAMB				HEAD	SILL
A-101	SINGLE	1	3'-0"	7'-2"	AL				AL	0'-4 1/2"	J1	H1	SF1		YES	1
A-102	SINGLE	1	3'-0"	7'-2"	AL				AL	0'-4 1/2"	J1	H1	SF1		YES	1
A-103	SINGLE	1	3'-0"	7'-2"	AL				AL	0'-4 1/2"	J1	H1	SF1			1
A-104	SINGLE	1	3'-0"	7'-2"	AL				AL	0'-4 1/2"	J1	H1	SF1			1
A-105	SINGLE	1	3'-0"	7'-2"	AL				AL	0'-4 1/2"	J1	H1	SF1			1
A-106	SINGLE	1	3'-0"	7'-2"	AL				AL	0'-4 1/2"	J1	H1	SF1		YES	1
A-107	SINGLE	1	3'-0"	7'-2"	HM				HM	0'-4 1/2"	J2	H2	HM1			1
A-109	SINGLE	1	3'-0"	7'-2"	AL				AL	0'-4 1/2"	J1	H1	SF1			1
A-110	SINGLE	1	3'-0"	7'-2"	AL				AL	0'-4 1/2"	J1	H1	SF1			1
A-112	SINGLE	1	3'-0"	7'-2"	HM				HM	0'-4 1/2"	J2	H2	HM1			1
A-113	SINGLE	1	3'-0"	7'-2"	AL				AL	0'-4 1/2"	J1	H1	SF1		YES	1
A-114	SINGLE	1	3'-0"	7'-2"	AL				AL	0'-4 1/2"	J1	H1	SF1		YES	1
A-115	DOUBLE	1	8'-0"	7'-2"	HM				HM	0'-4 1/2"	J2	H2	HM2			1
A-116	SINGLE	2	3'-0"	7'-2"	WD	A			AL	0'-4 1/2"	J1	H1	HM1			1
A-118	COILING		2'-8"	4'-0"												
A-119	COILING		2'-8"	4'-0"												

GENERAL DOOR NOTES

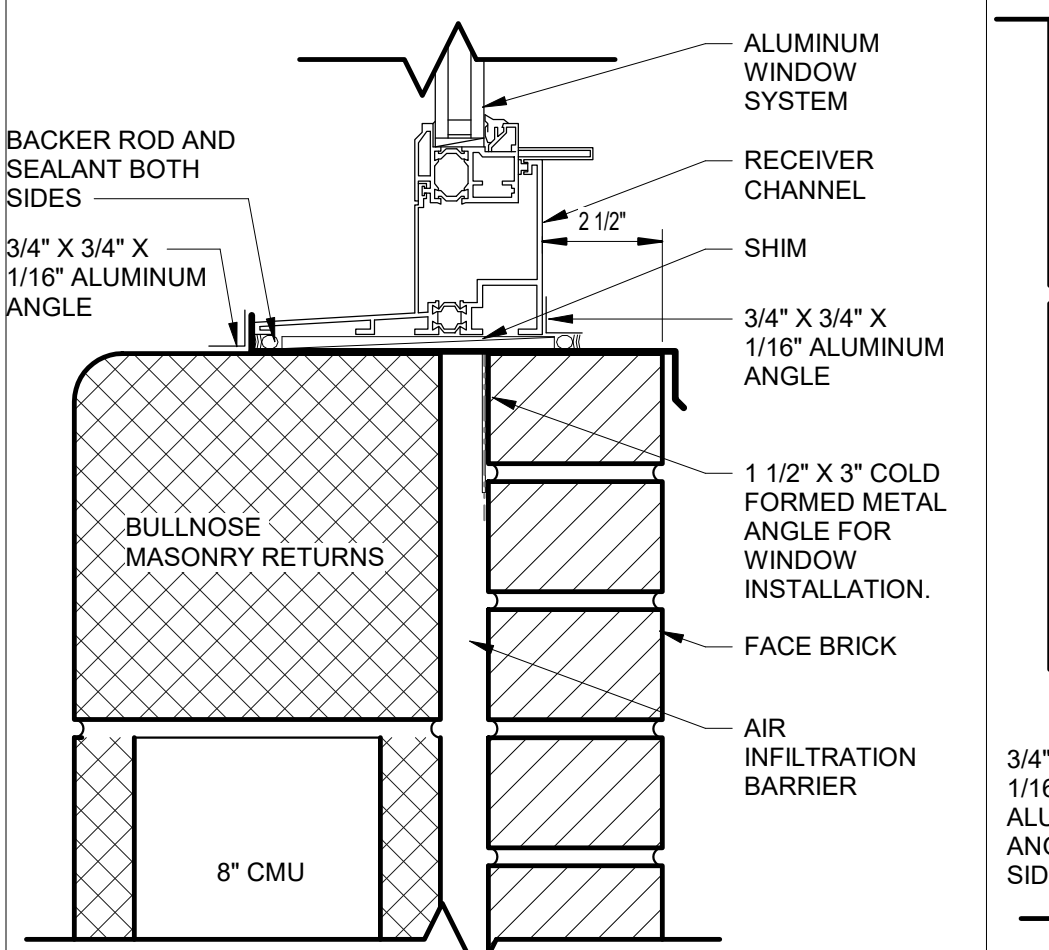
- JAMB, HEAD, AND SILL DO NOT SHOW WALL CONSTRUCTION. SEE FLOOR PLAN FOR WALL MATERIALS. SEE A-800 SERIES DRAWINGS FOR FINISHES.
- SEAL ALL JAMBS AND HEADS WHERE FRAMES MEET EXPOSED MASONRY AND/OR GYPSUM BOARD.
- PROVIDE A SCRIBE MOLD AT ALL EXTERIOR DOOR FRAMES AND WHERE NOTED ON DRAWINGS. SCRIBE MOLD TO BE 3/4" X 3/4" METAL AT EXTERIOR OF METAL FRAMES AND AT BOTH SIDES OF ALUMINUM FRAMES. SET SCRIBE MOLDS IN SEALANT.
- PROVIDE GLAZING AND GLASS STOPS AS REQUIRED.
- FIELD VERIFY ALL DIMENSIONS AND CONDITIONS.
- SHIM SPACE IS NOT SHOWN ON FRAME ELEVATIONS FOR ALUMINUM STOREFRONT. TAKE THESE DIMENSIONS INTO ACCOUNT AND ADJUST DIMENSIONS ACCORDINGLY.

DOOR SCHEDULE NOTES (REMARKS):

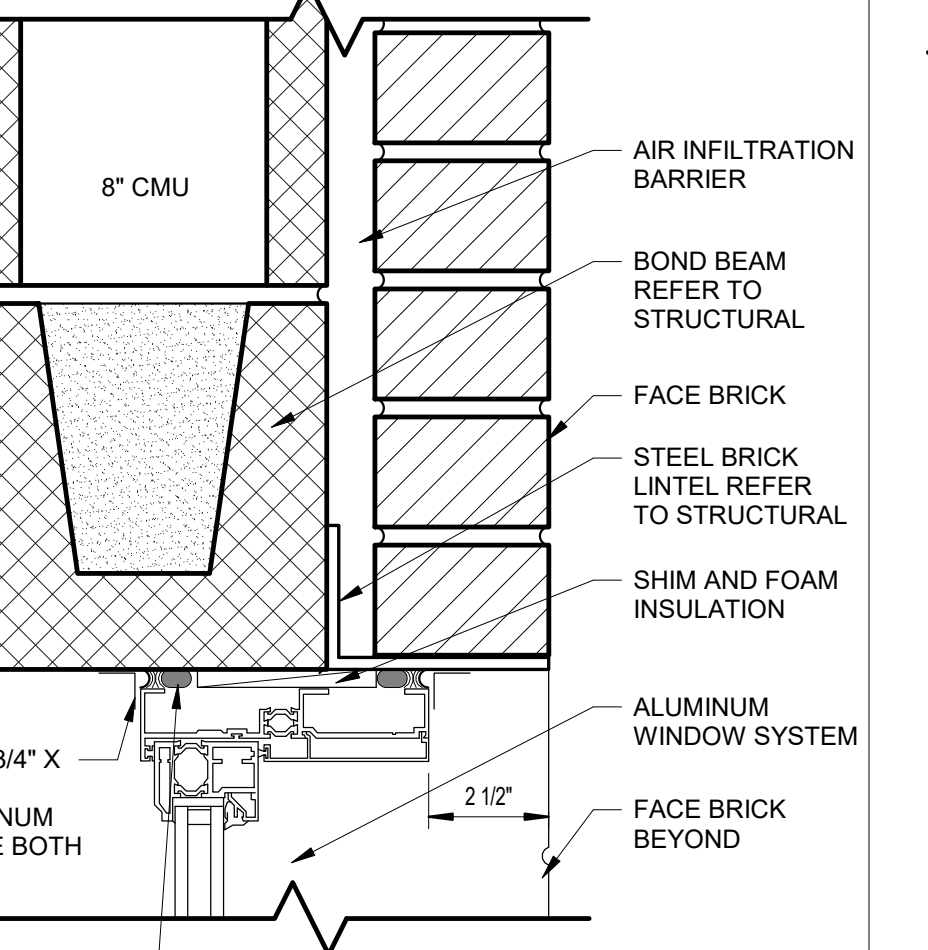
- PROVIDE ALUMINUM THRESHOLD SET IN FULL BED OF MASTIC.



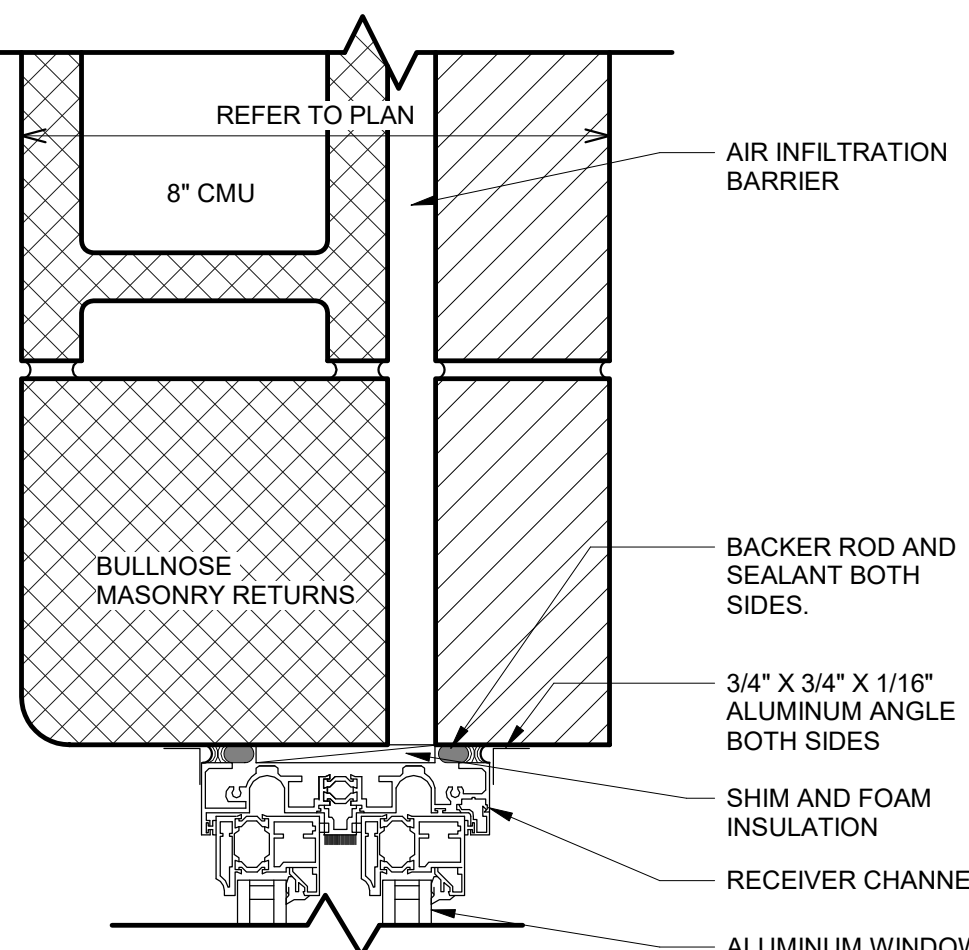
5 ATTIC ACCESS DETAIL
A-101 1 1/2" = 1'-0"



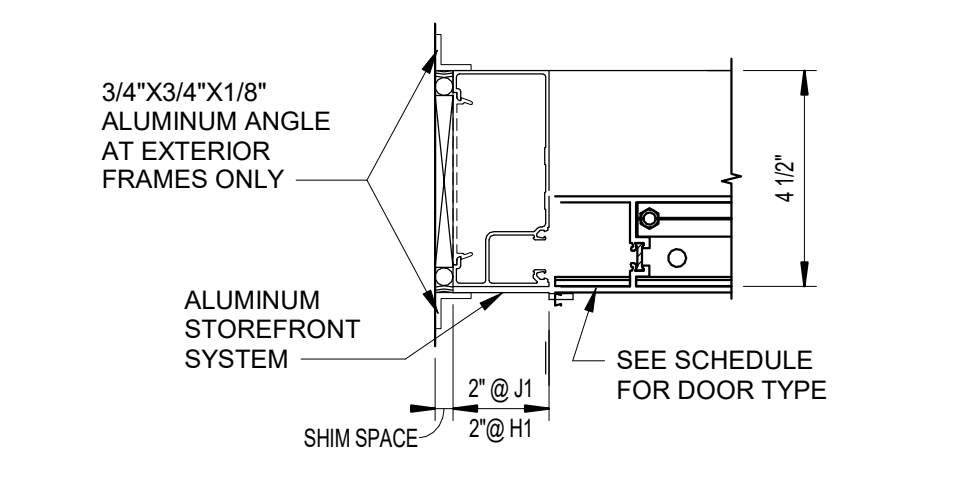
7 SILL DETAIL
A-101 3" = 1'-0"



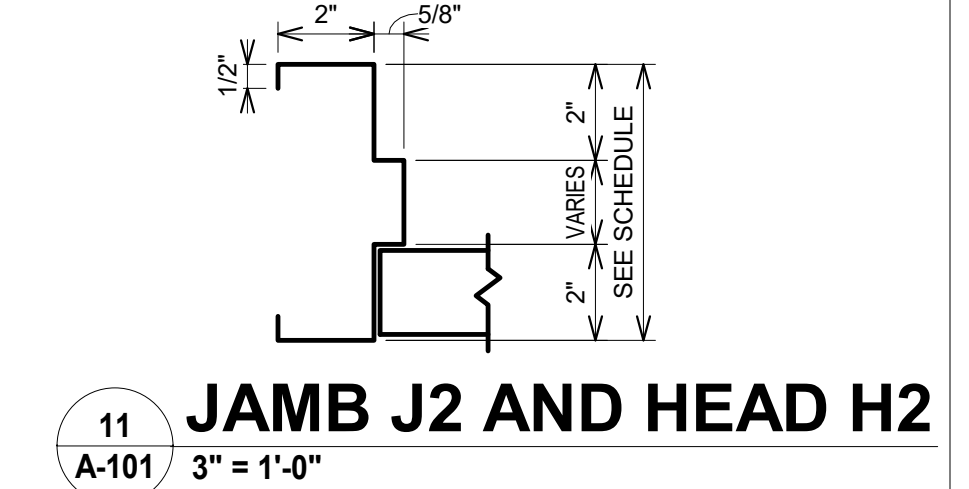
6 HEAD DETAIL
A-101 3" = 1'-0"



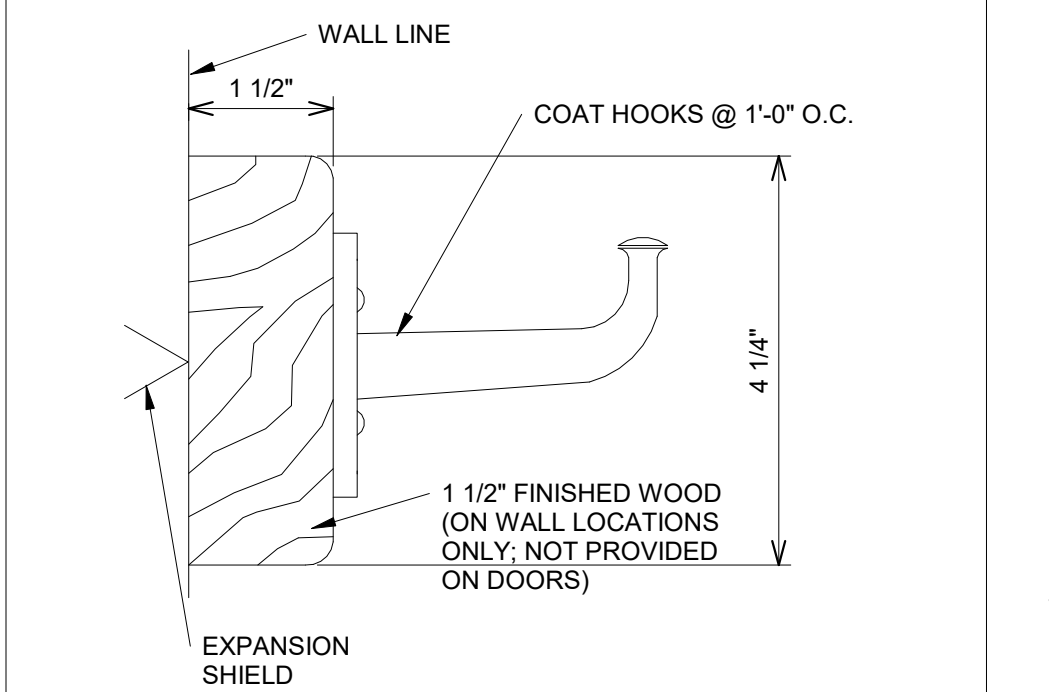
8 JAMB DETAIL
A-101 3" = 1'-0"



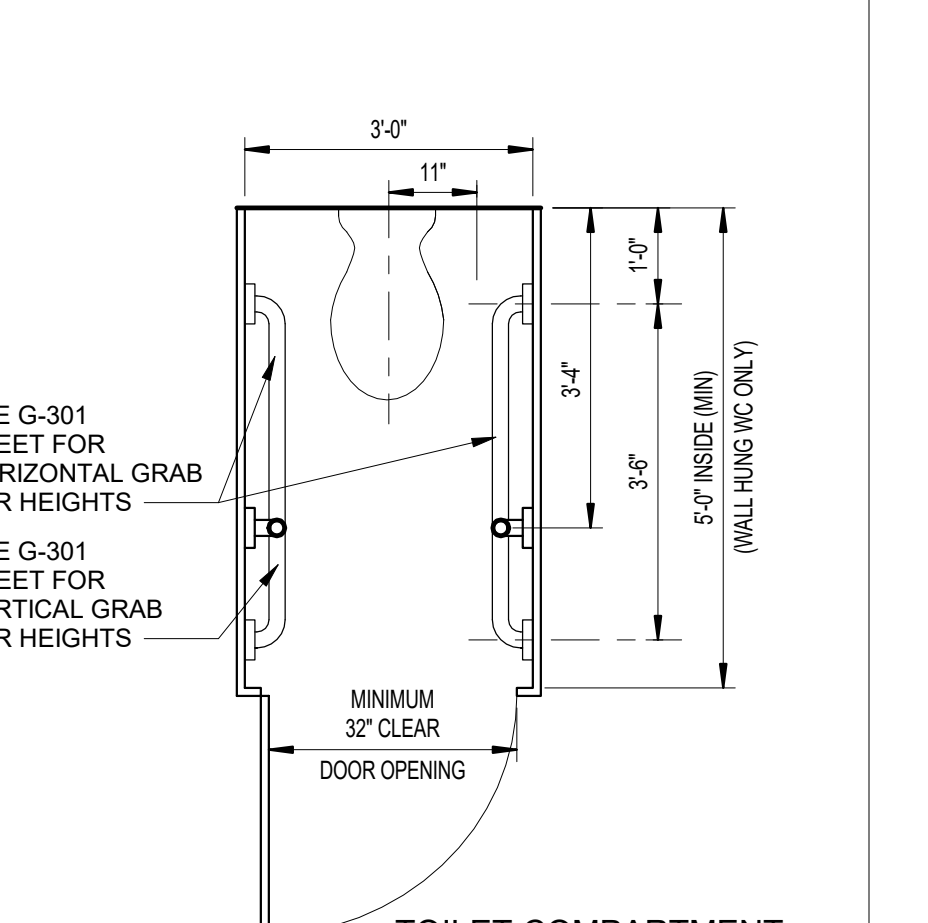
3 JAMB J1 AND HEAD H1
A-101 3" = 1'-0"



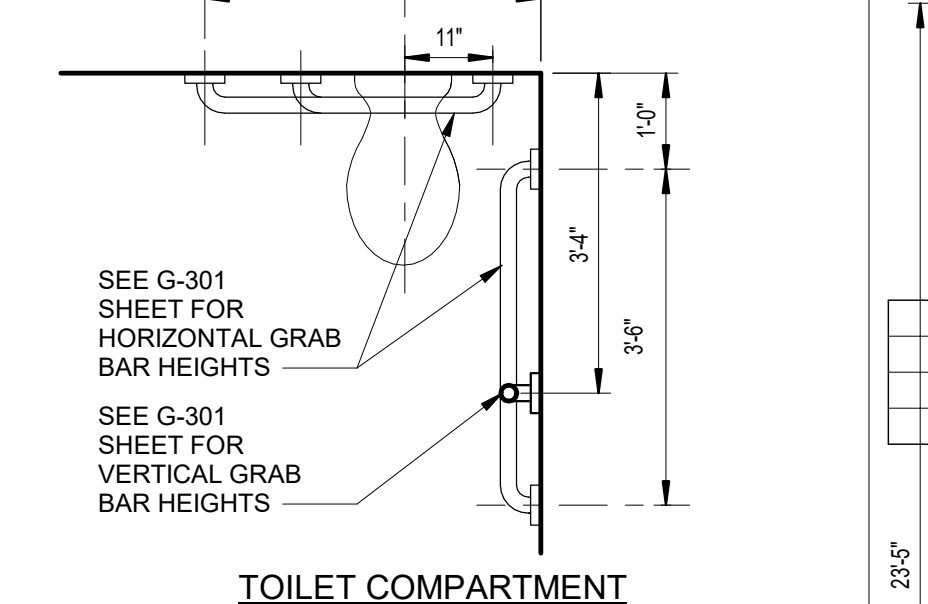
11 JAMB J2 AND HEAD H2
A-101 3" = 1'-0"



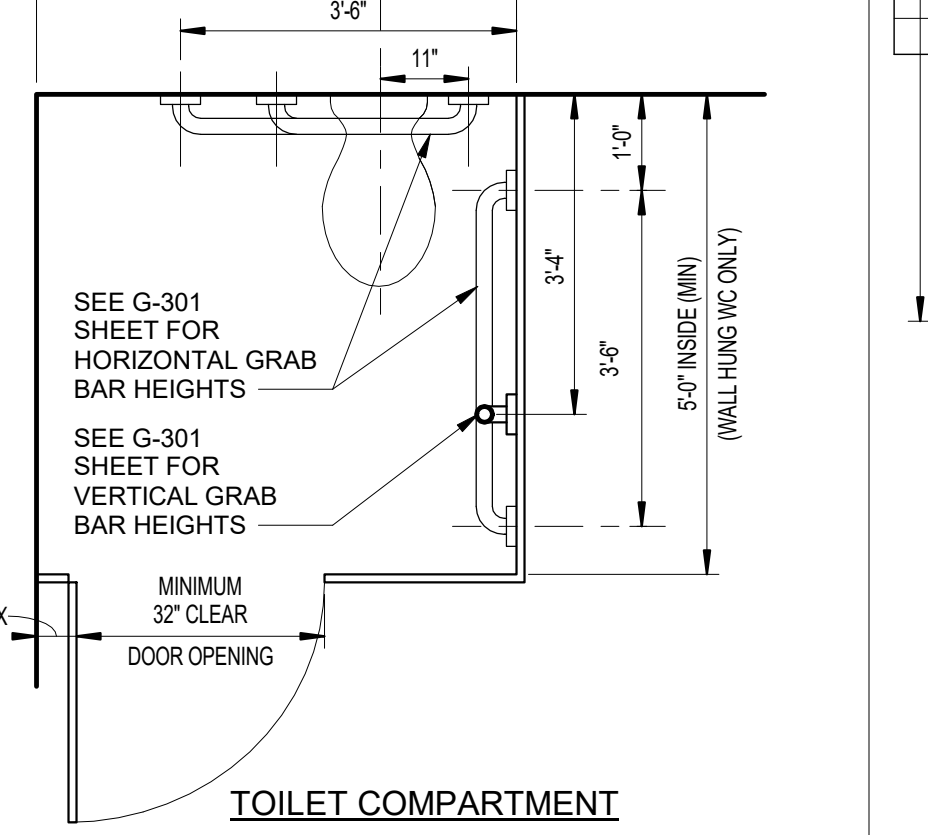
4 WALL HOOK DETAIL
A-101 6" = 1'-0"



TOILET COMPARTMENT



TOILET COMPARTMENT



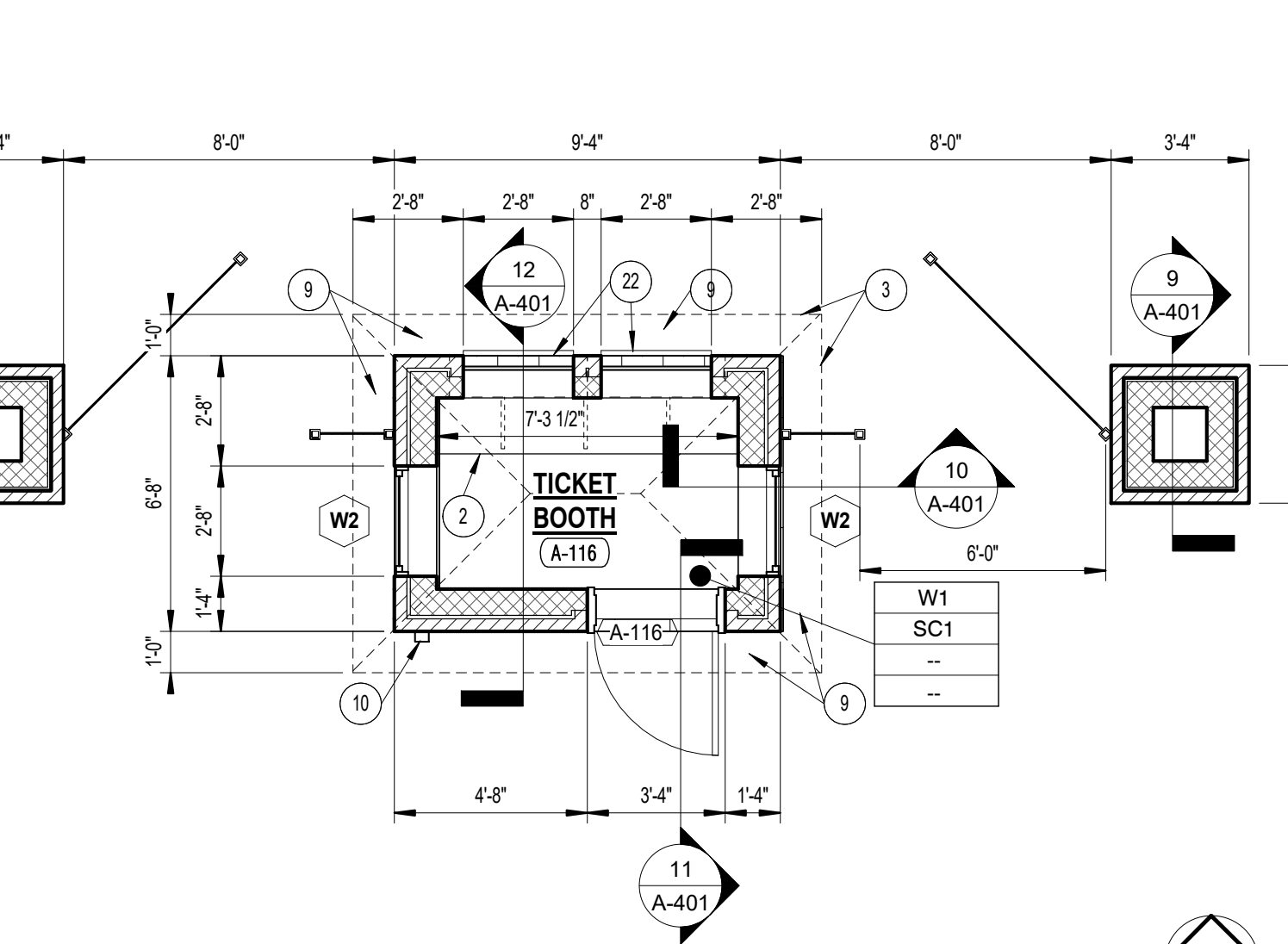
9 ACCESSIBLE FACILITIES
A-101 1/2" = 1'-0"

GENERAL NOTES:

- FOR GENERAL PROJECT NOTES, MATERIAL INDICATIONS LEGEND, SYMBOL LEGEND, ABBREVIATION, ETC. REFER TO SHEET G-301.
- PLAN DIMENSIONS TO MASONRY WALLS ARE TO FACE OF ROUGH MASONRY.
- ALL CMU WALLS THAT DO NOT LAY OUT IN FULL OR HALF LENGTHS SHOULD BE BALANCED SO AS NOT TO HAVE ANY PIECES LESS THAN 4" IN SIZE EXPOSED TO VIEW.
- MASONRY WALLS BEARING ON A THICKENED SLAB AT SLAB DEPRESSIONS REQUIRE CUT MASONRY UNITS SO THAT COURSING BEGINS AT THE FLOOR LINE.
- THE BASE FIRST FLOOR ELEVATION INDICATED FOR THE PROJECT IS 100'-0". REFER TO SITE PLAN FOR CORRELATION TO USGS DATUM.
- HINGE SIDE OF DOOR JAMB AT GYPSUM BOARD WALLS SHALL BE LOCATED 4" MINIMUM FROM ADJACENT WALL UNLESS NOTED OTHERWISE.
- INTERIOR CMU WALLS ARE TO BE RUNNING BOND UNLESS NOTED OTHERWISE.
- ALL EXPOSED CONCRETE MASONRY UNITS (CMU) CORNERS ARE TO BE BULLNOSED EXCEPT AT MASONRY BULKHEADS AND EXTERIOR WINDOW JAMBS.
- CONTRACTOR IS TO FILL CORES WITH INSULATION ON EXTERIOR CMU WALLS.

PLAN LEGEND:

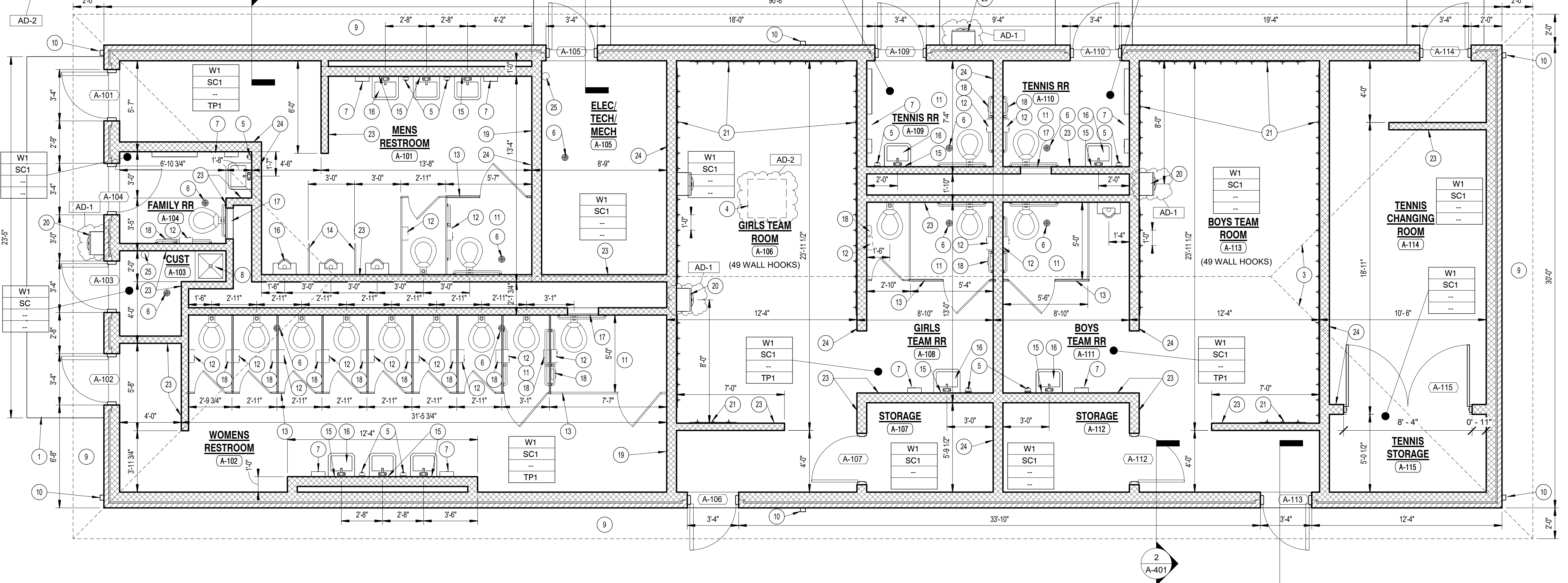
- P1 - (PAINT) SHERWIN WILLIAMS, CEILING BRIGHT WHITE 7007.
- P2 - (PAINT) SHERWIN WILLIAMS, GRIZZLE GRAY SW7068, DOOR FRAMES
- SC1 - (SEALED CONCRETE), REFER TO CONCRETE SPECIFICATIONS FOR SEALER AND FINISH.
- TP1 - (TOILET PARTITION) ASI ACCURATE PARTITION, SOILD PLASTIC, BURGUNDY 9211.
- W1 - (WALL COATING) SHERWIN WILLIAMS, WORLDLY GRAY SW7043



2 TICKET BOOTH FIRST FLOOR PLAN
A-101 1/4" = 1'-0"

PLAN NOTES:

- CONCRETE STOOP. PROVIDE SCORED JOINTS ON SURFACE TO ALIGN WITH CONCRETE SIDEWALK JOINTS. REFER TO STRUCTURAL DRAWINGS.
- STAINLESS STEEL MILLWORK (TYPICAL), REFER TO SPECIFICATIONS.
- LINE OF ROOF
- ATTIC ACCESS COORDINATE LOCATION WITH ROOF TRUSSES AND MECHANICAL EQUIPMENT
- SOAP DISPENSER, OFCI
- FLOOR DRAIN. REFER TO PLUMBING.
- PAPER TOWEL DISPENSER, OFCI
- MOP SINK. REFER TO PLUMBING DRAWINGS
- PERFORATED ALUMINUM SOFFIT
- 3/4" ALUMINUM DOWNSPOUT AND BOOT CONNECTED TO STORM SEWER. REFER TO CIVIL
- ACCESSIBLE FACILITIES
- TOILET PAPER HOLDER, (OFCI)
- TOILET PARTITION
- URINAL SCREEN WALL
- 2'-0" W x 3'-0" H MIRROR WITH BOTTOM OF REFLECTIVE SURFACE MOUNTED AT 40" A.F.F.
- ACCESSIBLE FIXTURE (LAVATORY/URINAL), SEE PLUMBING DRAWINGS.
- 24"x24" ACCESS PANEL MOUNT TOP OF PANEL AT 5'-4" A.F.F. COORDINATE LOCATION W/ SENSOR HEIGHT.
- FEMININE NAPKIN DISPENSER
- 2'-0" x 5'-0" MIRROR BOTTOM @ 1'-4" A.F.F.
- DRINKING FOUNTAIN AND/OR BOTTLE FILLER. REFER TO PLUMBING.
- WALL HOOK
- COILING DOOR
- 6" CMU TO BOTTOM OF GYPSUM BOARD CEILING
- 8" CMU TO BOTTOM OF GYPSUM BOARD CEILING
- FIRE EXTINGUISHER



1 ATHLETIC BUILDING FIRST FLOOR PLAN
A-101 1/4" = 1'-0"

KEY PLAN

GIBALTAR DESIGN
9102 N. Meridian St., Ste. 300
Indianapolis, IN 46260
Homepage: www.GibraltarDesign.com
Email: info@GibraltarDesign.com
Phone: 317.580.5777 Fax: 317.580.5778

PROJECT
24-134
DATE
02/07/25
COORDINATED BY
DTB
DRAWN BY
DTS
CHECKED BY
JB, MR

COPYRIGHT NOTICE:
THE CONCEPTS, DESIGN, FRAME DETAILS, ETC. SHOWN ON THIS DOCUMENT ARE THE PROPERTY OF GIBALTAR DESIGN AND ARE NOT TO BE REPRODUCED OR USED FOR ANY OTHER PROJECT WITHOUT THE WRITTEN CONSENT OF GIBALTAR DESIGN. THE OWNER MAY RETAIN COPIES FOR INFORMATION AND REFERENCE IN CONNECTION ONLY WITH THIS PROJECT.

REVISIONS		
MARK	DATE	ISSUED FOR
AD-1	02/04/25	ADDENDUM 1
AD-2	02/12/25	ADDENDUM 2

DRAWING
UNIT "A" ARCHITECTURAL
FIRST FLOOR PLAN

PROJECT
CHESTERTON HS SOCCER VENUE
IMPROVEMENTS AND RELATED
WORK

PROJECT
GIBALTAR DESIGN
SHEET
A A-101



GIBRALTAR DESIGN

ARCHITECTURE • ENGINEERING • INTERIOR DESIGN

GENERAL ELEVATION NOTES:

- A. REFER TO STRUCTURAL DRAWINGS FOR FOUNDATION WALLS AND FOOTINGS.
- B. REFER TO FLOOR PLANS FOR EXTERIOR WALL SECTION CUTS, UNLESS INDICATED OTHERWISE.
- C. FOR LOCATION AND MOUNTING HEIGHT OF CAMERAS, SPEAKERS, LIGHTS, HORNS, ETC. REFER TO ELECTRICAL DRAWINGS.
- D. ALL FACE BRICK SHALL BE UTILITY 1/3 RUNNING BOND UNLESS NOTED OTHERWISE.
- E. FINISH GRADE INDICATED ON ELEVATIONS ARE FOR DRAWING PURPOSES ONLY. REFER TO CIVIL DRAWINGS FOR ACTUAL GRADES. COORDINATE STEEPED FLASHINGS WITH ACTUAL GRADES AS REQUIRED FOR CELL VENTS TO BE ABOVE GRADE.
- F. STEP BRICK LEDGE DOWN AS REQUIRED FOR LEDGE TO BE BELOW GRADE OR CONCRETE WALK UNLESS NOTED OTHERWISE. COORDINATE WITH CIVIL DRAWINGS.
- G. (CJ) INDICATES CONTROL JOINT. REFER TO DETAILS AND

ELEVATION NOTES:

(ALL PLAN NOTES MAY NOT BE INDICATED ON THIS SHEET)

- 1 FACED BRICK COLOR A - RUNNING BOND - 4X4X12 UTILITY
- 2 FACED BRICK COLOR B - RUNNING BOND - 4X4X12 UTILITY
- 3 ALUMINUM DOWNSPOUT AND GUTTER AND BOOT CONNECTED TO STORM SEWER - 4" X 5" TYPICAL DOWNSPOUT
- 4 ALUMINUM FRAMED OPENINGS WITH ALUMINUM DOORS
- 5 METAL ROOF SYSTEM
- 6 TRIANGLE LOUVER: MINIMUM 3 SQUARE FEET CLEAR AIR SPACE. REFER TO SPECIFICATIONS
- 7 FINISH GRADE
- 8 ORNAMENTAL GATE. REFER TO CIVIL.
- 9 COILING COUNTER DOOR
- 10 DOUBLE HUNG ALUMINUM WINDOW
- 11 4" X 9" CAST STONE CORNICE
- 12 4" X 16" CAST STONE BASE
- 13 DRINKING FOUNTAIN
- 14 ARCH SIGN PER SIGN MANUFACTURER

PROJECT:

CHESTERTON HS SOCCER VENUE IMPROVEMENTS AND RELATED WORK

DUNELAND SCHOOL CORPORATION
2125 11TH ST, CHESTERTON, IN 46304

GIBRALTAR DESIGN

9102 N. Meridian St., Ste. 300
Indianapolis, IN 46260
Homepage: www.GibraltarDesign.com
Email: info@GibraltarDesign.com
Phone: 317.580.5777 Fax: 317.580.5778

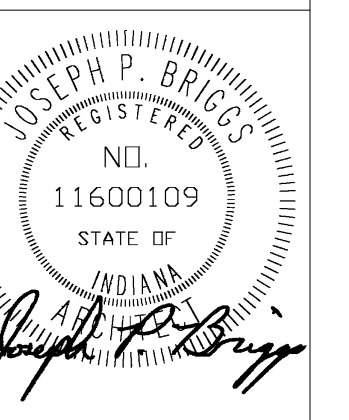
PROJECT 24-134

DATE 02/07/25

COORDINATED BY DTB

DRAWN BY DTS

CHECKED BY JB, MR



COPYRIGHT NOTICE:
THE CONCEPTS, DESIGN, NAME, DETAILS, ETC. SHOWN ON THIS DOCUMENT ARE THE PROPERTY OF GIBRALTAR DESIGN AND ARE RESERVED FOR USE ON THIS SPECIFIC PROJECT. NONE OF THIS INFORMATION SHALL BE USED BY ANY PERSON OR FIRM FOR ANY PURPOSE WITHOUT THE EXPRESS WRITTEN CONSENT OF GIBRALTAR DESIGN. THE OWNER MAY RETAIN COPIES FOR INFORMATION AND REFERENCE IN CONNECTION ONLY WITH THIS PROJECT.

REVISIONS

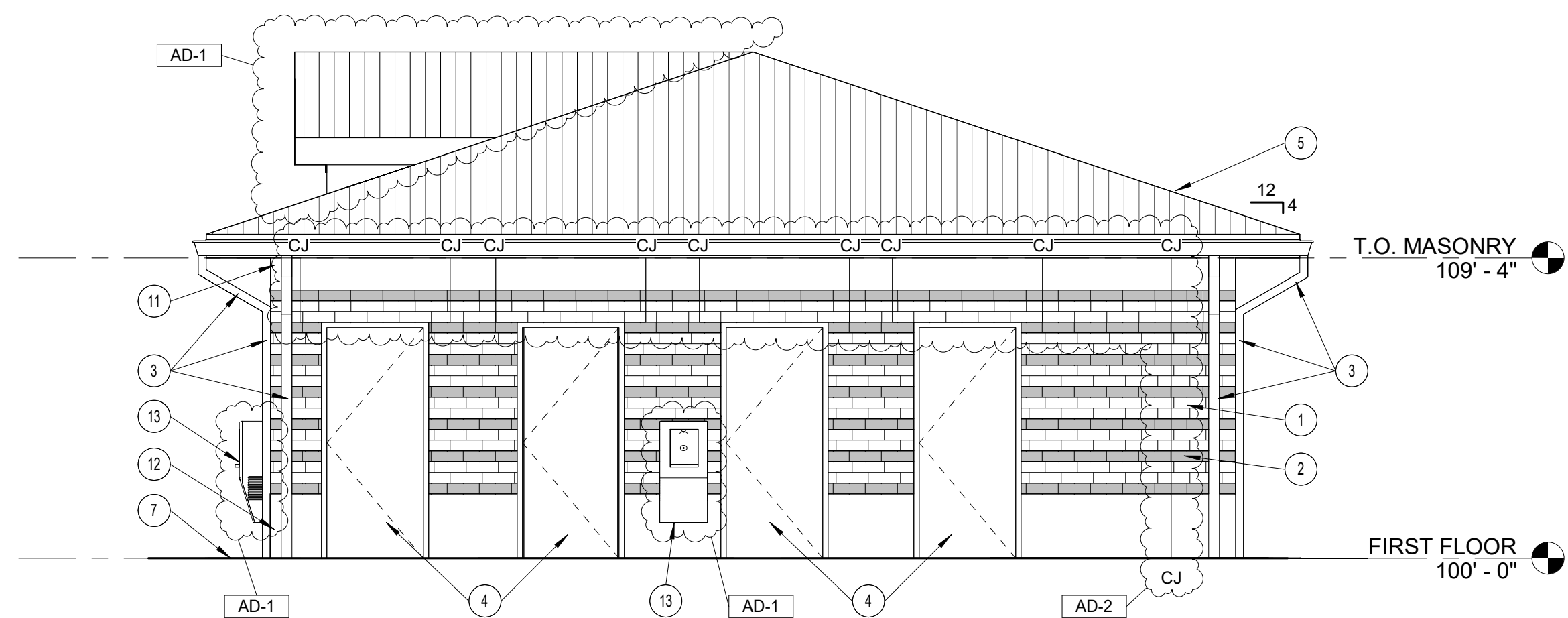
MARK	DATE	ISSUED FOR
AD-1	02/04/25	ADDENDUM 1
AD-2	02/12/25	ADDENDUM 2

DRAWING EXTERIOR ELEVATIONS

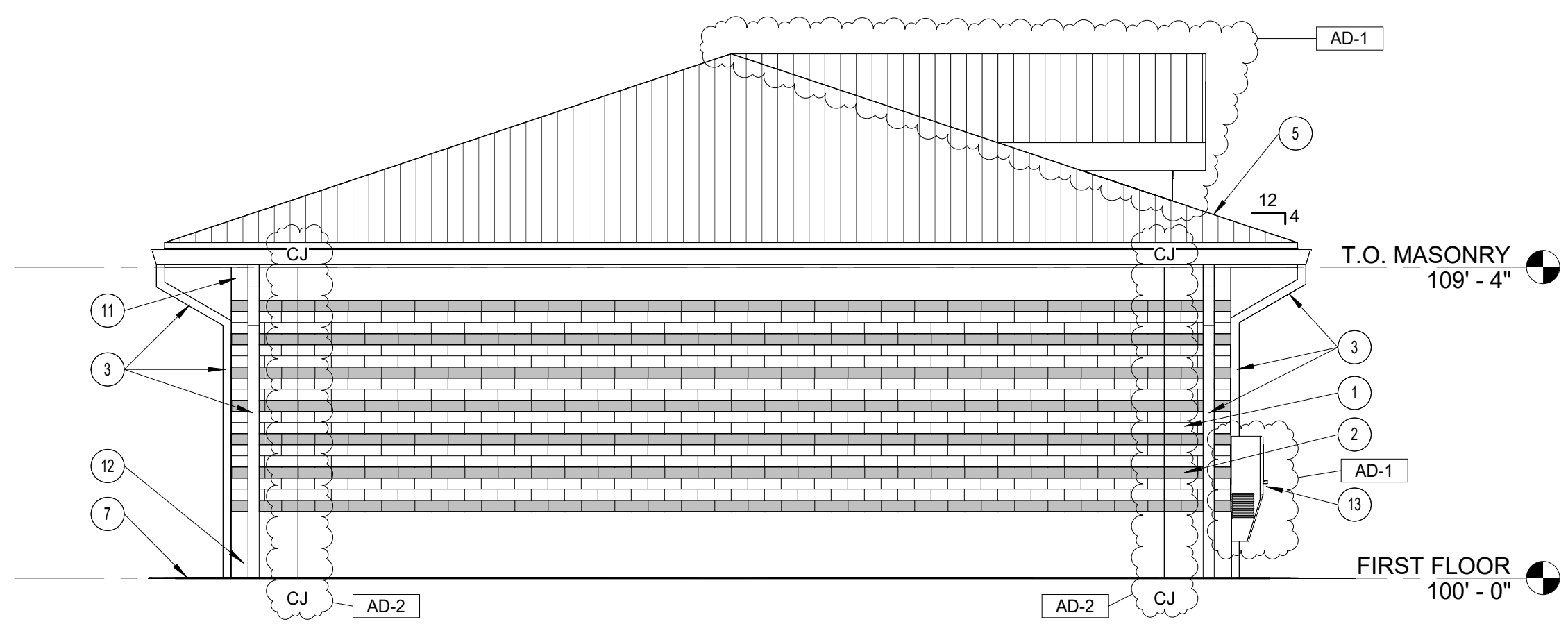
PROJECT CHESTERTON HS SOCCER VENUE IMPROVEMENTS AND RELATED WORK

© GIBRALTAR DESIGN SHEET

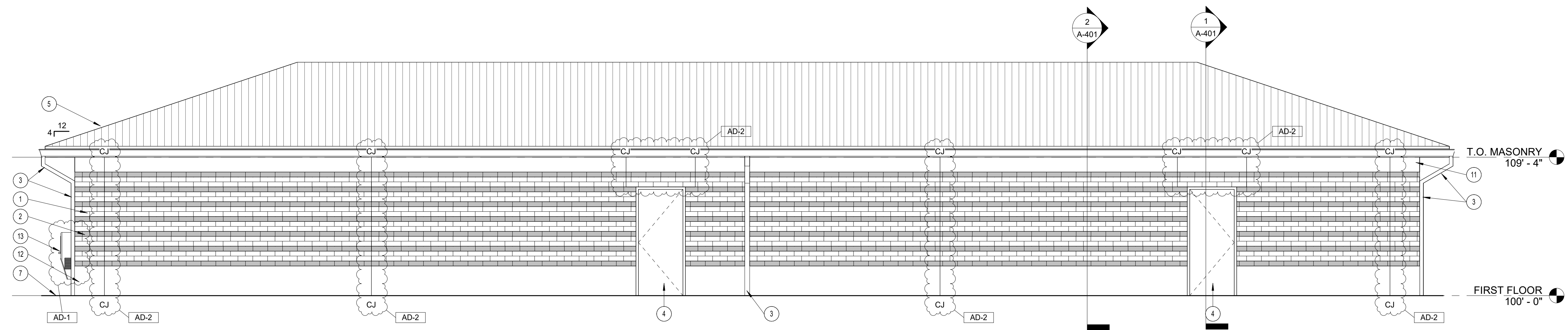
A-301



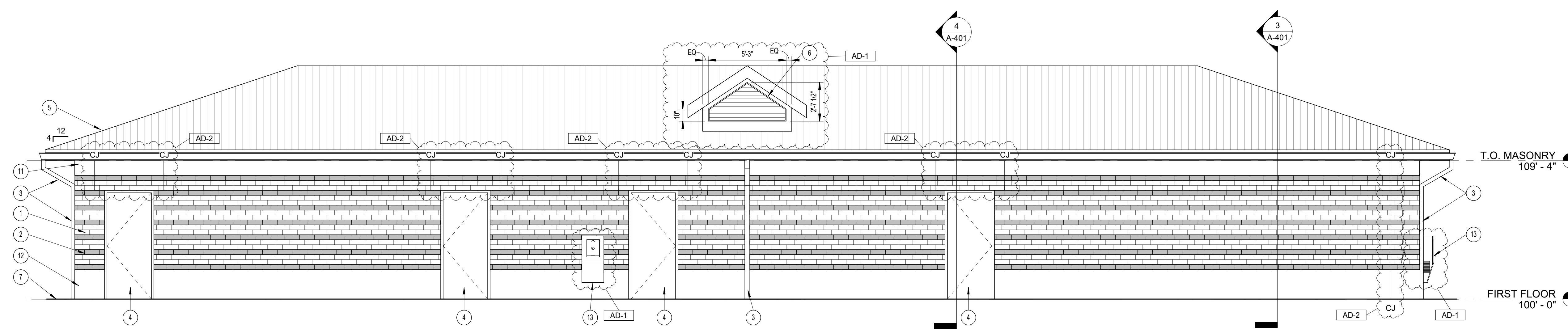
8 ATHLETIC BUILDING EAST ELEVATION
A-301 1/4" = 1'-0"



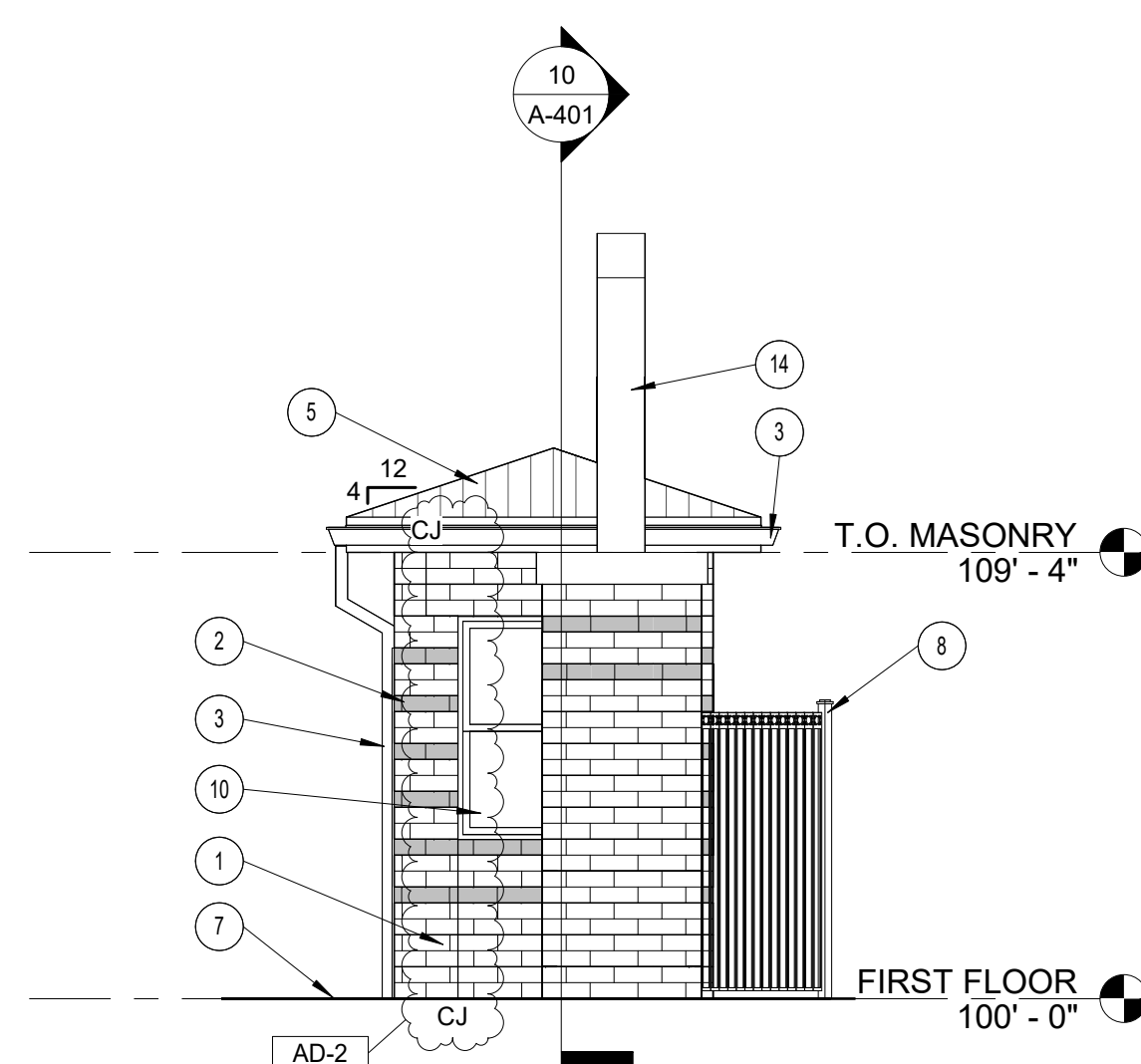
7 ATHLETIC BUILDING WEST ELEVATION
A-301 1/4" = 1'-0"



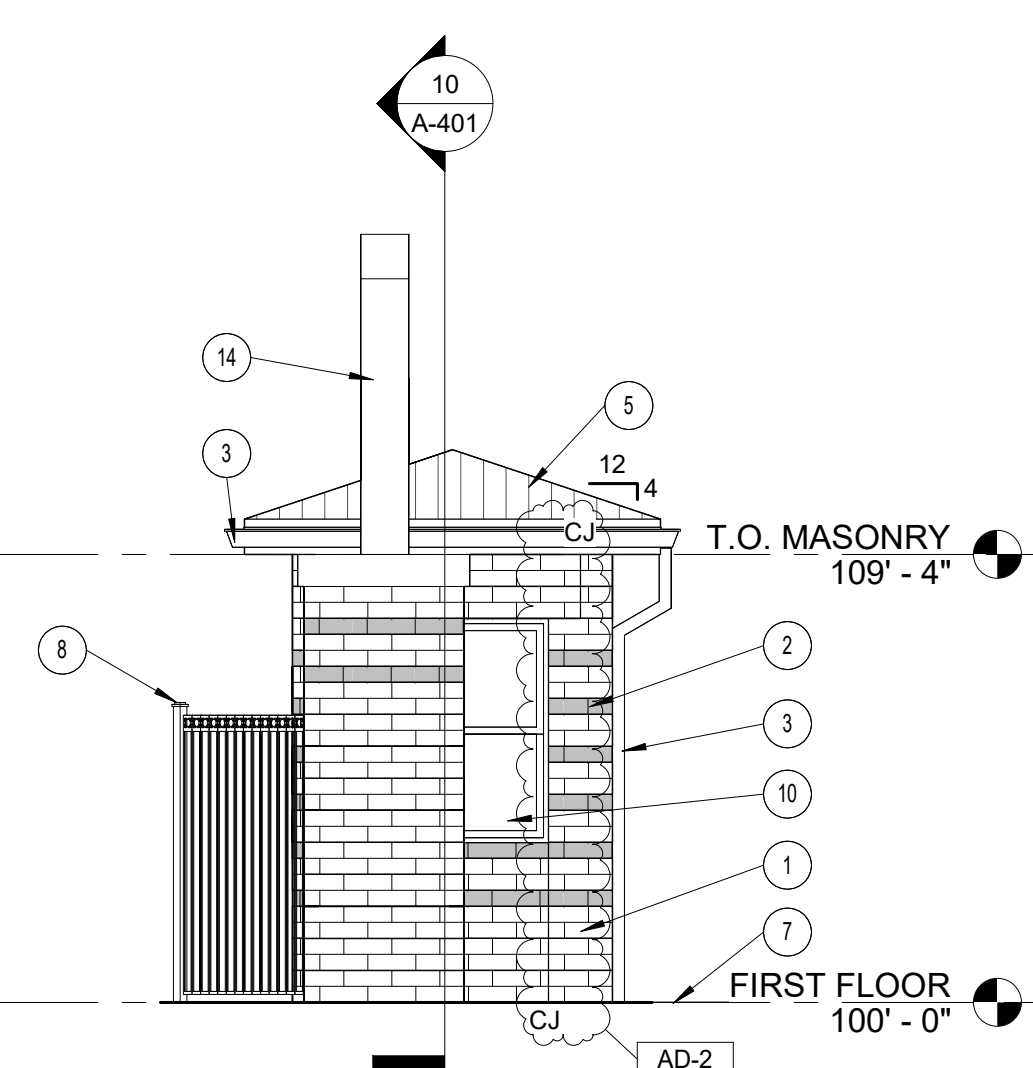
6 ATHLETIC BUILDING SOUTH ELEVATION
A-301 1/4" = 1'-0"



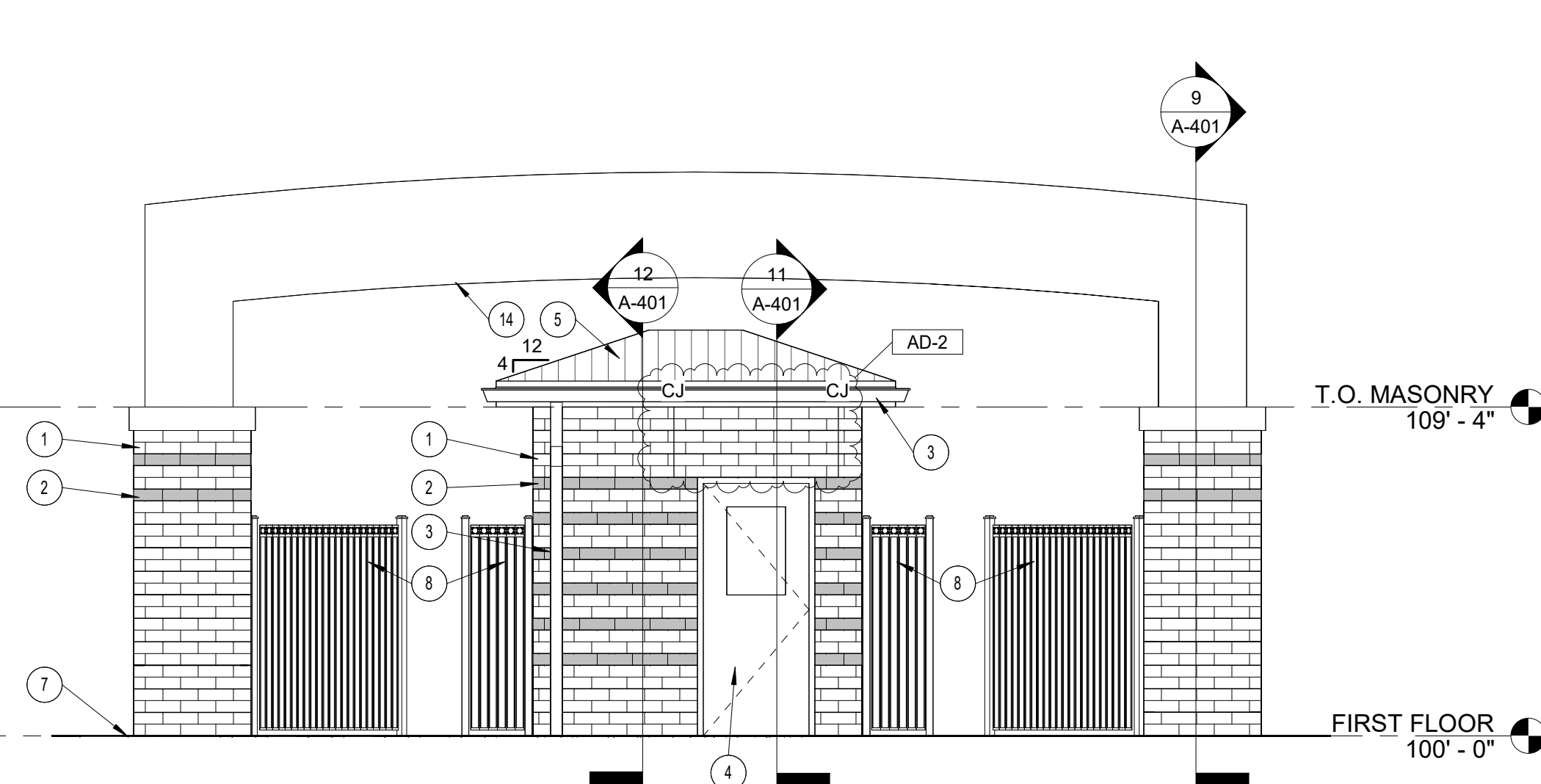
5 ATHLETIC BUILDING NORTH ELEVATION
A-301 1/4" = 1'-0"



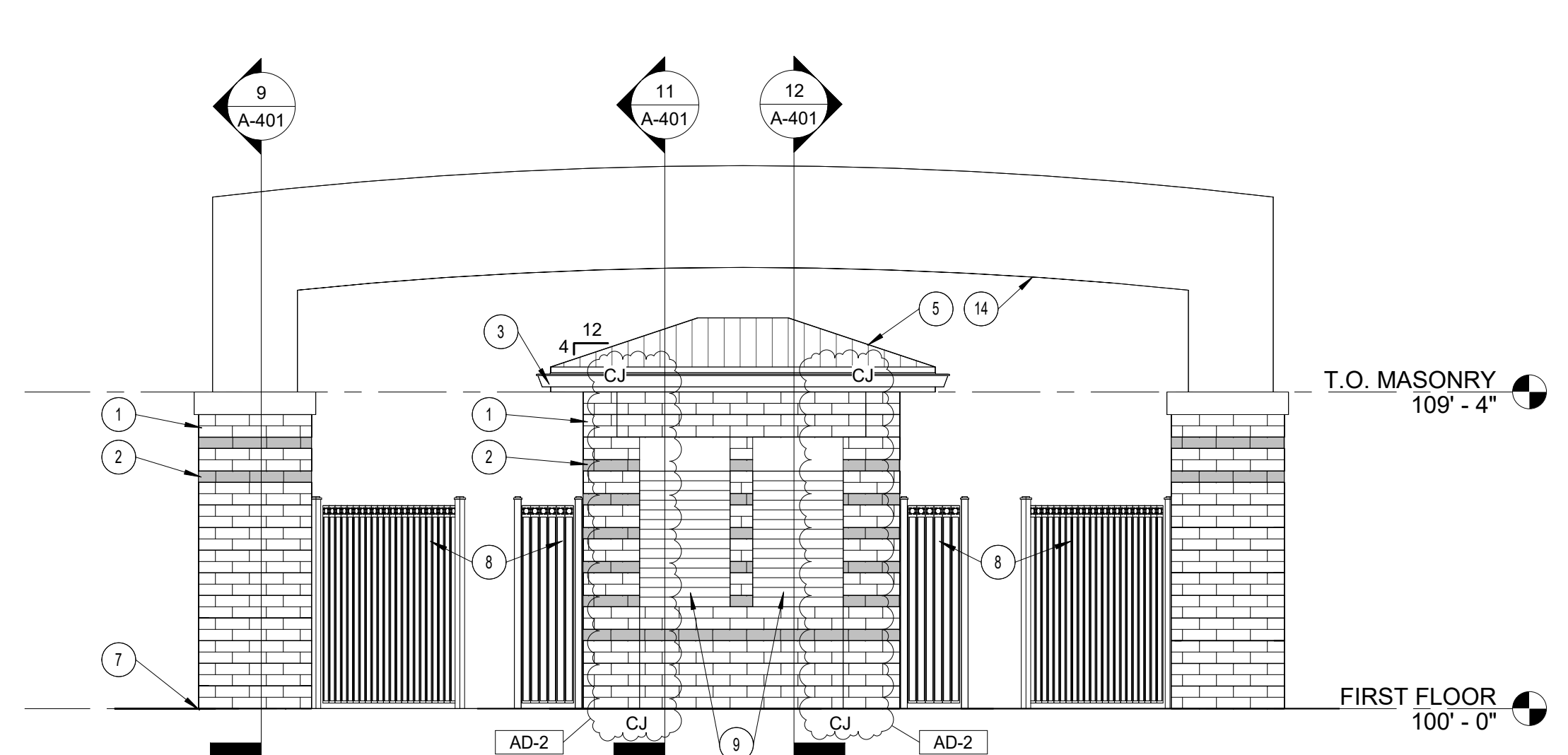
4 TICKET EAST ELEVATION
A-301 1/4" = 1'-0"



3 TICKET WEST ELEVATION
A-301 1/4" = 1'-0"



2 TICKET SOUTH ELEVATION
A-301 1/4" = 1'-0"



1 TICKET NORTH ELEVATION
A-301 1/4" = 1'-0"

C:\Users\dsheidrow\Documents\24-134_Duneland SC Soccer Field_R25_ARCH_dshedrow\GYVT.rvt 2/12/2025 2:18:20 PM



GIBRALTAR DESIGN
ARCHITECTURE • ENGINEERING • INTERIOR DESIGN

PROJECT:
CHESTERTON HS SOCCER VENUE IMPROVEMENTS AND RELATED WORK
DUNELAND SCHOOL CORPORATION
2125 11TH ST., CHESTERTON, IN 46304

GENERAL NOTES

- A. FOR GENERAL PROJECT NOTES, MATERIAL INDICATIONS LEGEND, SYMBOL LEGEND, ABBREVIATIONS, ETC., REFER TO SHEET G-301.
- B. THE ARCHITECTURAL REFLECTED CEILING PLANS GOVERN THE LAYOUT OF ALL CEILING ELEMENTS AND PENETRATIONS.
- C. BULKHEAD FRAMING SHALL BE ATTACHED TO STRUCTURAL SUPPORTS AND NOT THE ROOF DECK.
- D. REFER TO FLOOR PLANS FOR WALL TYPES.
- E. REFER TO FIRE PROTECTION DRAWINGS FOR SPRINKLER HEAD TYPES AND QUANTITIES. HEADS HAVE INTENTIONALLY BEEN OMITTED FOR CLARITY.
- F. CEILING ACCESS PANELS INDICATED ARE NOT INTENDED TO LIMIT NUMBER OF PANELS REQUIRED. PANEL QUANTITY SHALL BE SUFFICIENT TO PROVIDE REQUIRED ACCESS WHETHER OR NOT INDICATED ON THE DRAWINGS. VERIFY FINAL LOCATIONS WITH ARCHITECT PRIOR TO STARTING WORK.
- G. REFER TO ELECTRICAL DRAWINGS FOR LIGHT FIXTURE TYPE AND QUANTITIES.
- H. REFER TO MECHANICAL DRAWINGS FOR DIFFUSERS, GRILL TYPES AND QUANTITIES - ALL MECHANICAL ITEMS MAY NOT BE INDICATED ON THIS SHEET.
- I. REFER TO TECHNOLOGY DRAWINGS FOR ADDITIONAL CEILING MOUNTED TECHNOLOGY ITEMS.
- J. CEILING HEIGHTS NOTED ARE MEASURED FROM FINISHED FLOOR UNDER MAJORITY OF THE CEILING IN QUESTION.

CEILING LEGEND

- GYPSUM BOARD CEILING
- EFS SOFFIT - PROVIDE 1/2" SEALANT JOINT AT PERIMETER
- LIGHT FIXTURE
- SUPPLY AIR DIFFUSER
- RETURN OR EXHAUST REGISTER
- EXHAUST REGISTER

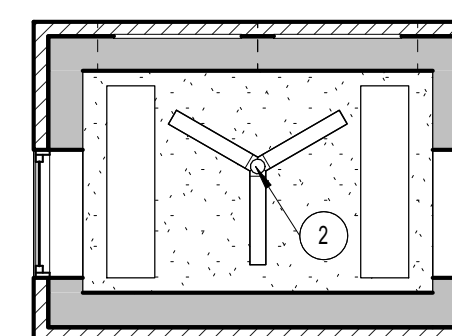
REFLECTED CEILING PLAN

KEYED NOTES:

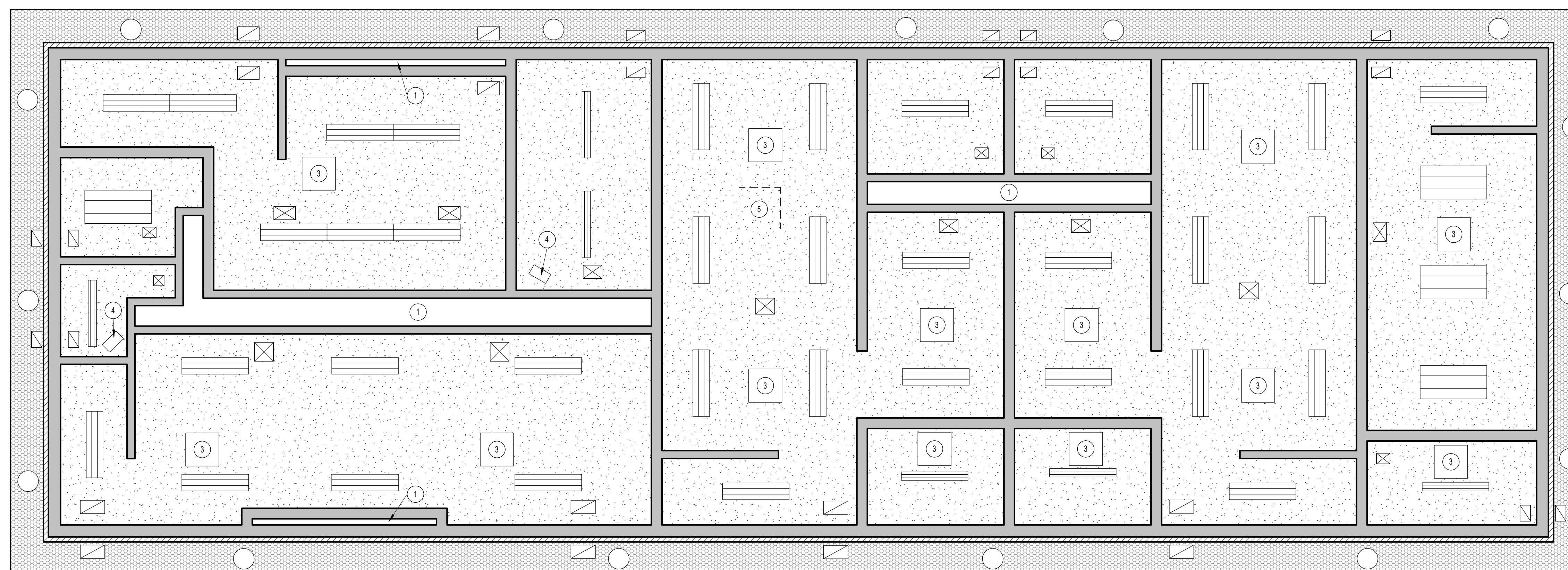
- (ALL PLAN NOTES MAY NOT BE INDICATED ON THIS SHEET)
- 1 OPEN TO STRUCTURE ABOVE - NO CEILING REQUIRED.
 - 2 CEILING FAN. REFER TO ELECTRICAL.
 - 3 CEILING MOUNTED DOWNFLOW HEATER. REFER TO ELECTRICAL.
 - 4 CEILING MOUNTED UNIT HEATER. REFER TO ELECTRICAL.
 - 5 ATTIC ACCESS COORDINATE LOCATION WITH ROOF TRUSSES AND MECH EQUIPMENT.

GENERAL REFLECTED CEILING FINISH NOTES:

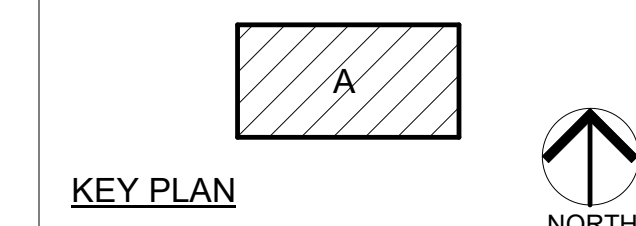
- A. UNLESS NOTED OTHERWISE, GYPSUM BOARD AND/OR GYPSUM BOARD CEILINGS TO BE PAINTED P1.
- B. UNLESS NOTED OTHERWISE, ALL EXPOSED STRUCTURE, DECK, MECHANICAL, AND ELECTRICAL ARE NON-PAINTED.
- C. FOR FINISHES, REFER TO FINISH LEGEND ON SHEET A-101.



2
A-901 **TICKET BOOTH REFLECTED CEILING PLAN**
1/4" = 1'-0"



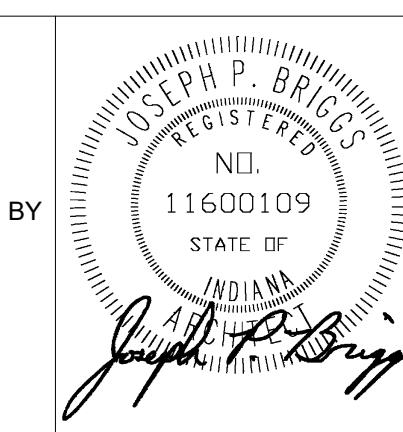
1
A-901 **ATHLETIC BUILDING REFLECTED CEILING PLAN**
1/4" = 1'-0"



KEY PLAN
NORTH

GIBRALTAR DESIGN
9102 N. Meridian St., Ste. 300
Indianapolis, IN 46260
Homepage: www.GibraltarDesign.com
Email: info@GibraltarDesign.com
Phone: 317.580.5777 Fax: 317.580.5778

PROJECT: 24-134
DATE: 02/07/25
COORDINATED BY: DTB
DRAWN BY: DTS
CHECKED BY: JB, MR



COPYRIGHT NOTICE:
THE CONCEPTS, DESIGN, FRAME, DETAILS, ETC. SHOWN ON THIS DOCUMENT ARE THE PROPERTY OF GIBRALTAR DESIGN AND ARE CREATED FOR USE ON THIS SPECIFIC PROJECT. NONE OF THIS INFORMATION SHALL BE USED BY ANY PERSON OR FIRM FOR ANY PURPOSE WITHOUT THE EXPRESS WRITTEN CONSENT OF GIBRALTAR DESIGN. THE OWNER MAY RETAIN COPIES FOR INFORMATION AND REFERENCE IN CONNECTION ONLY WITH THIS PROJECT.

MARK	DATE	ISSUED FOR
AD-2	02/12/25	ADDENDUM 2

DRAWING
REFLECTED CEILING PLANS

PROJECT
CHESTERTON HS SOCCER VENUE IMPROVEMENTS AND RELATED WORK

© GIBRALTAR DESIGN SHEET
A A-901

NEW SHEET ADDED IN ADDENDUM 2