



GIBRALTAR
DESIGN
ARCHITECTURE • ENGINEERING • INTERIOR DESIGN

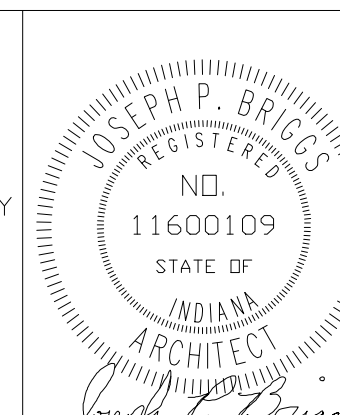
PROJECT
CHESTERTON HS SOCCER VENUE IMPROVEMENTS AND RELATED WORK

FOR:
DUNELAND SCHOOL CORPORATION
2125 11TH ST, CHESTERTON, IN 46304

GIBRALTAR DESIGN

9102 N. Meridian St., Ste. 300
Indianapolis, IN 46260
Homepage: www.GibraltarDesign.com
Email: info@GibraltarDesign.com
Phone: 317.580.5777 Fax: 317.580.5778

PROJECT: 24-134
DATE: 1/21/25
COORDINATED BY: JPB
DRAWN BY: DTB
CHECKED BY: JPB



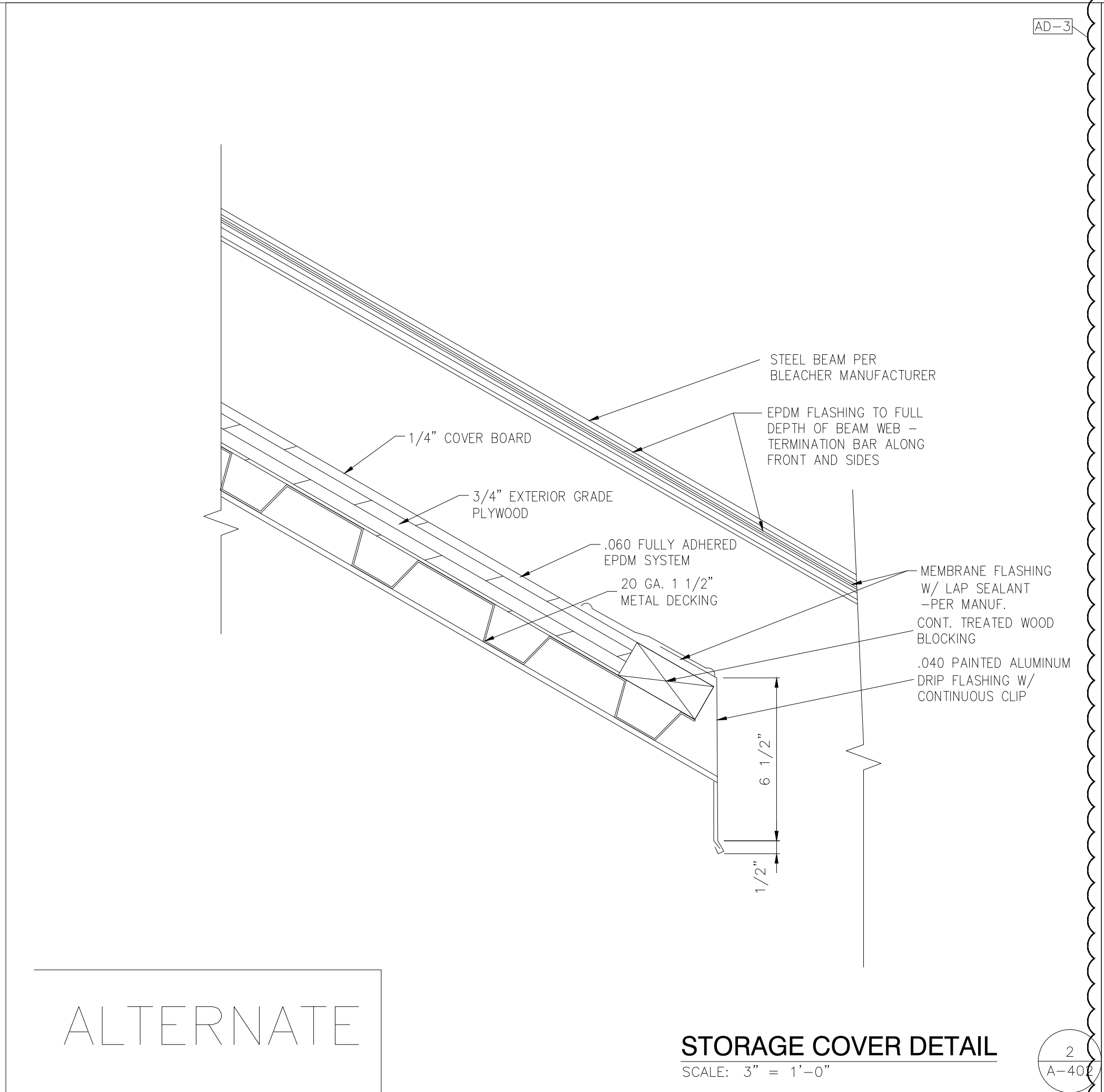
COPYRIGHT NOTICE:
THE CONCEPTS, DESIGNS, PLANS, DETAILS, ETC. SHOWN ON THIS DOCUMENT ARE THE PROPERTY OF GIBRALTAR DESIGN AND WERE CREATED FOR USE ON THIS SPECIFIC PROJECT. NONE OF THIS INFORMATION SHALL BE USED BY ANY PERSON OR FIRM FOR ANY PURPOSE WITHOUT THE EXPRESS WRITTEN CONSENT OF GIBRALTAR DESIGN. THE OWNER MAY RETAIN COPIES FOR INFORMATION AND REFERENCE IN CONNECTION ONLY WITH THIS PROJECT.

| REVISIONS | MARK | DATE | ISSUED FOR |
|-----------|------|------------|----------------|
| 1 | D | 1-02/07/25 | ADDENDUM NO. 1 |
| 2 | D | 3-02/17/25 | ADDENDUM NO. 3 |

DRAWING
BLEACHER SECTION AND DETAILS

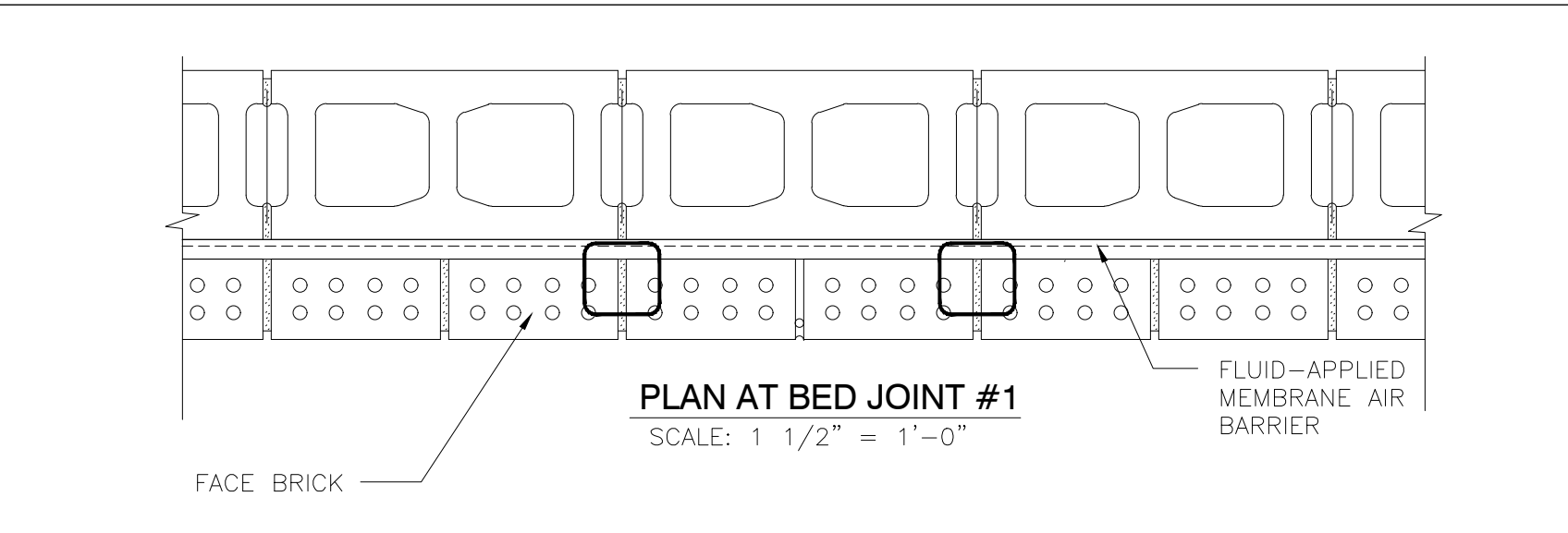
PROJECT
CHESTERTON HIGH SCHOOL SOCCER VENUE IMPROVEMENTS

DRAWING SHEET
A-402

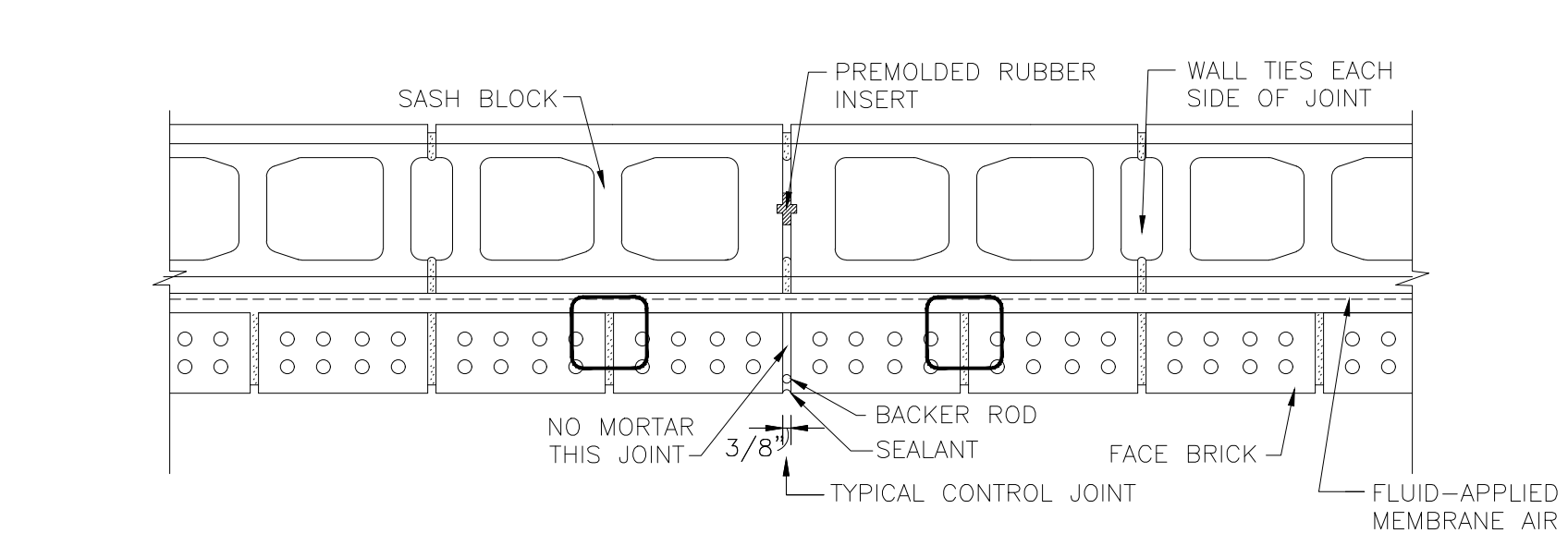


ALTERNATE

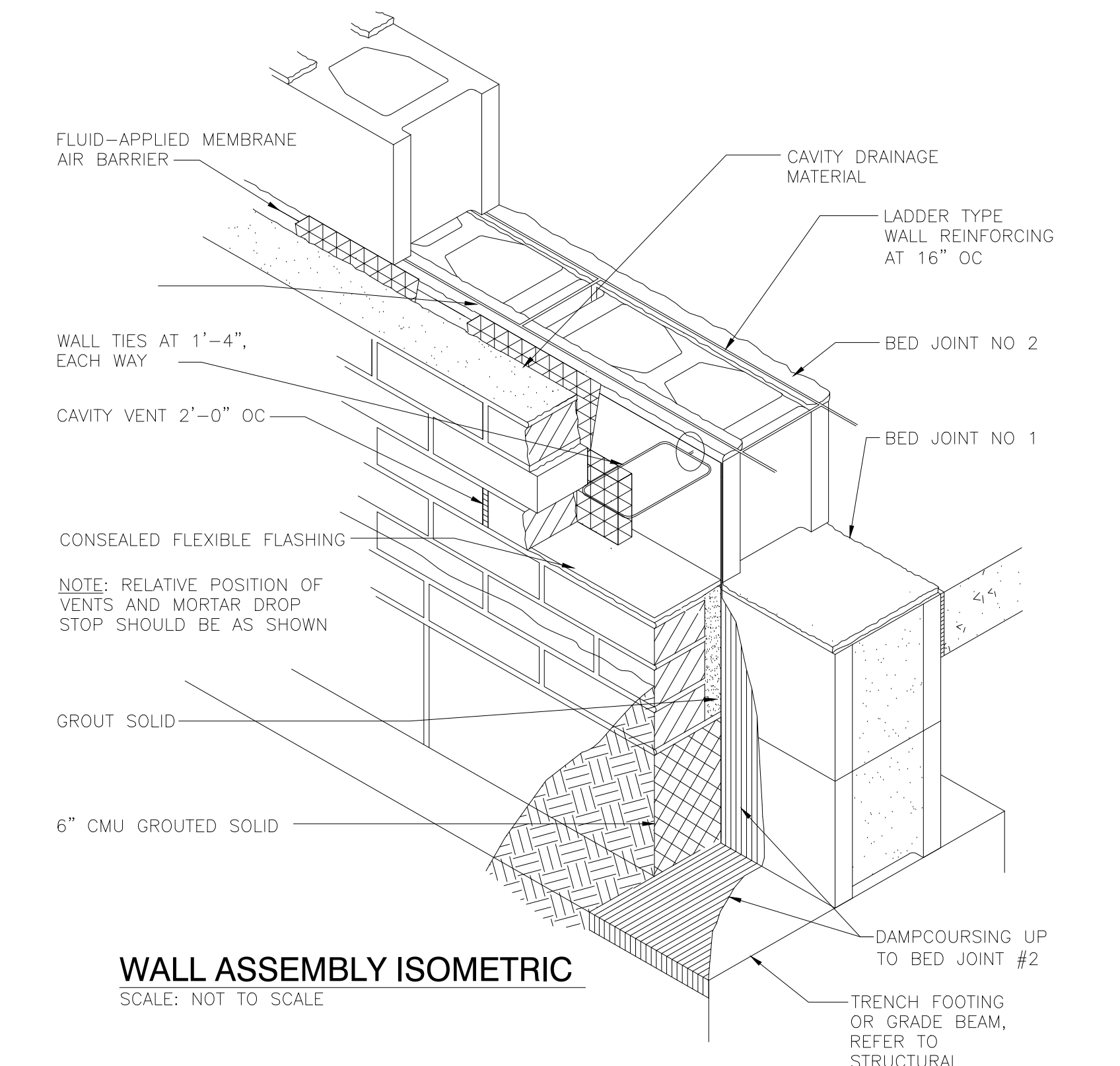
STORAGE COVER DETAIL
SCALE: 3" = 1'-0"



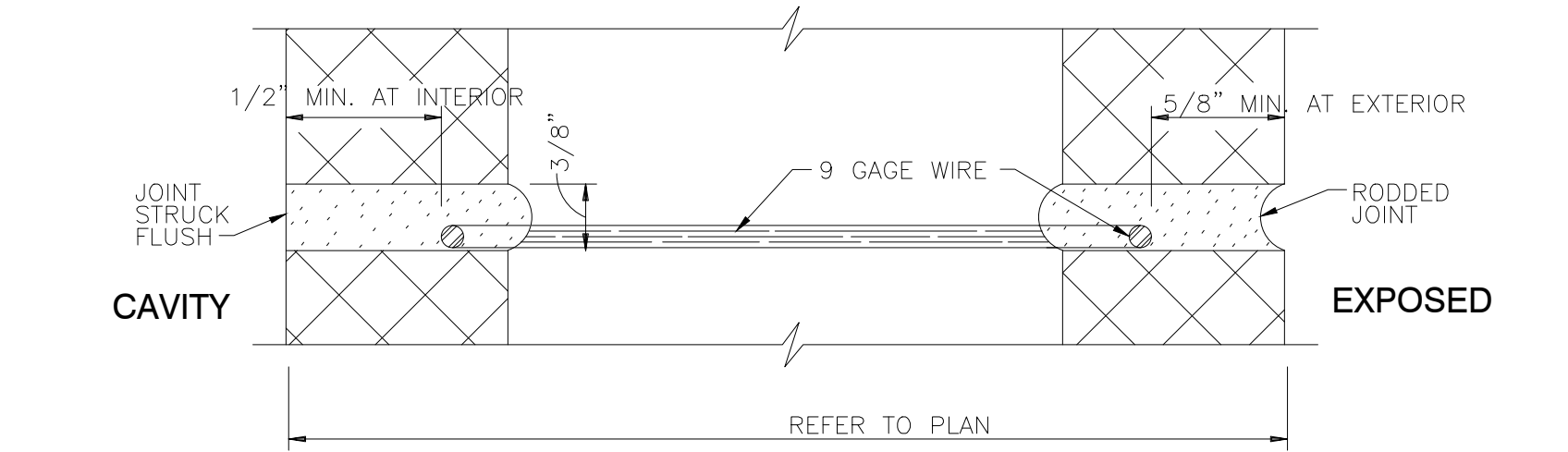
PLAN AT BED JOINT #1
SCALE: 1 1/2" = 1'-0"



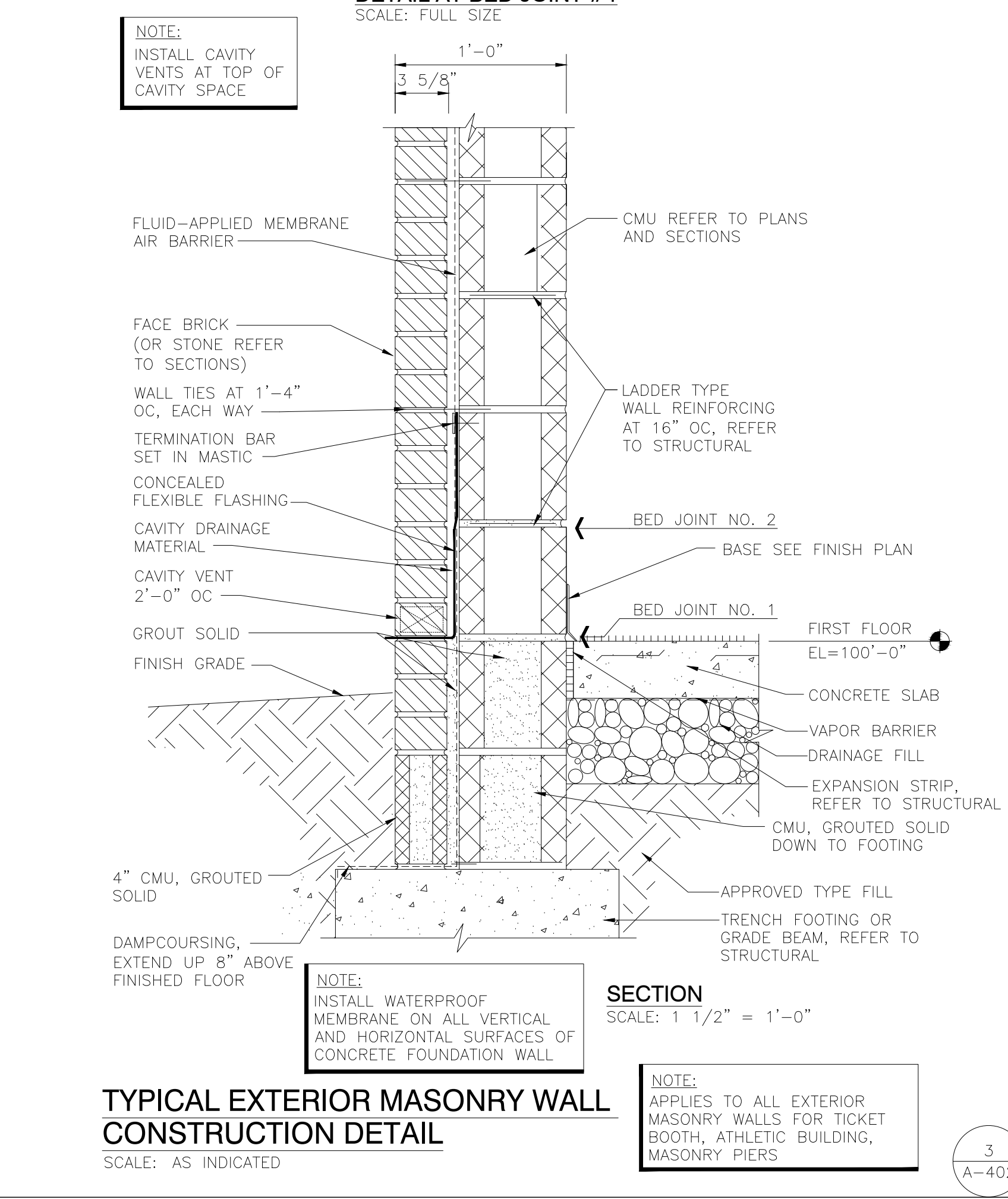
PLAN AT BED JOINT #2
SCALE: 1 1/2" = 1'-0"



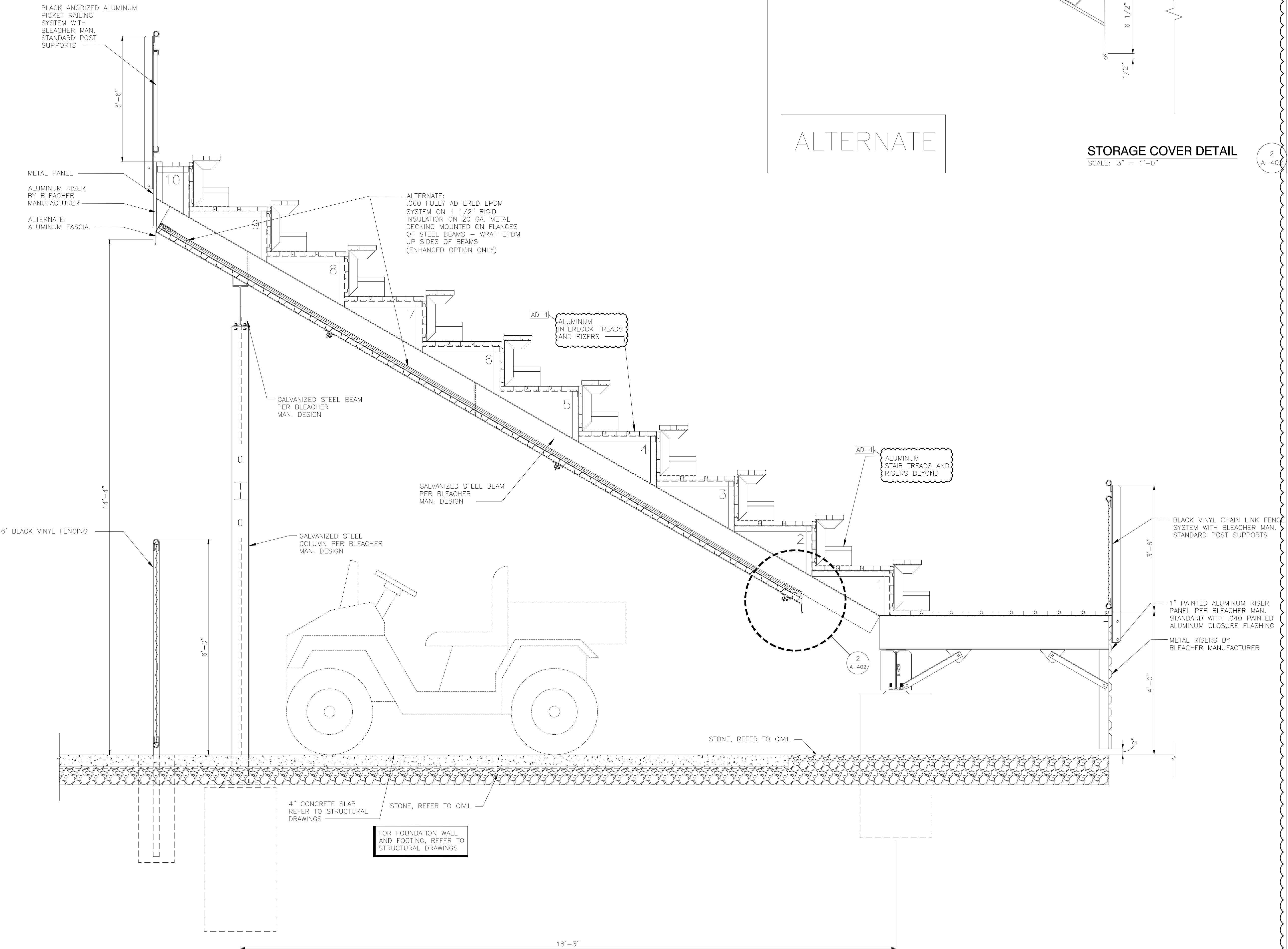
WALL ASSEMBLY ISOMETRIC
SCALE: NOT TO SCALE



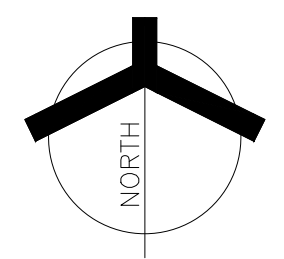
DETAIL AT BED JOINT #1
SCALE: FULL SIZE



TYPICAL EXTERIOR MASONRY WALL CONSTRUCTION DETAIL
SCALE: AS INDICATED



SOCCER GRANDSTAND AND STORAGE SECTION
SCALE: 3/4" = 1'-0"



Monday, 2/17/2025 - 12:53 PM - LAST SAVED BY: DDBEDROW
V:\24-134 DUNELAND SC - CHESTERTON HS SOCCER VENUE IMPROVEMENTS AND RELATED WORK\24-134 DRAWINGS\03 ARCH\A-402.DWG