

**ADDENDUM
NO. 5**

March 4, 2025

**IPS: Joyce Kilmer New School 69
3421 N. Keystone Avenue
Indianapolis, IN 46218**

TO: ALL BIDDERS OF RECORD

This Addendum forms a part of and modifies the Bidding Requirements, Contract Forms, Contract Conditions, the Specifications, and the Drawings dated January 17, 2025, by Meticulous Design + Architecture. Acknowledge receipt of the Addendum in the space provided on the Bid Form. Failure to do so may subject the Bidder to disqualification.

This Addendum consists of Pages ADD 5-1, and attached Meticulous Design + Architecture, dated March 3, 2025, consisting of three (3) pages, and Addendum Drawings: G-000, A-510, A-601, A-612, I-602, I-456, and I-457.

A. SPECIFICATION SECTION 01 12 00 -MULTIPLE CONTRACT SUMMARY

B. BID CATEGORY NO. 2 – GENERAL TRADES

Add the following Clarification:

16. This contractor is responsible for pouring concrete in metal pan stairs and landings.

IPS Joyce Kilmer 69

ADDENDUM 4 DRAWINGS AND SPECIFICATIONS

3/3/25

REQUESTS FOR SUBSTITUTION

1. At specification SECTION 075423 THERMOPLASTIC-POLYOLEFIN (TPO) ROOFING, request to add manufacturer, Johns Manville.
Answer: Not approved by IPS
2. At specification SECTION 105300 CANOPIES, request to add manufacturer, Columbus Awning.
Answer: Approved.
3. At specification SECTION 230923 – DIRECT DIGITAL CONTROL (DDC) SYSTEM FOR HVAC, request to add controls supplier, Honeywell E-Solutions.
Answer: Not approved by IPS.

QUESTIONS

1. The landscaping plans show a FFE of 733.75. The grading plan shows a FFE of 734.1. Please clarify.
Answer: The FFE is 734.10.
2. The demolition plans show two sanitary lines and a storm sewer being removed under the public roadway. Should these be open trench removed or can they be cut and abandoned at the edge of the road?
Answer: Abandon the sewer lines at the edge of the road in accordance with CEG's Sanitary Standards Manual dated January 2025.
3. Utility plan CU-101 shows storm STR-114 and STR-201 draining into existing sanitary manholes. Is this intended?
Answer: Yes, this is intended. It has also been approved by Indianapolis and CEG.
4. AWP-2 is listed on the Finish Legend Key and noted to be in the Gym. There are no elevations representing the Gym. The Gym AWP-2 can only be seen/identified on the Interior Renderings Drawing I-451 and Interior Finish Legend I-601. Neither of these are sufficient to accurately take the quantities off. Please issue elevations of the gym showing these panels accurately.
Answer: See Sheets I-456 and I-457 for Gymnasium Interior Elevations.
5. Spec calls out using 451T or 601T storefront systems and the 1600 Sys 3 for the CW. All the frames are drawn or called out at 4 1/2" deep. This is not possible with 1600 SYS 3 system.
Answer: See Updated sheets A-612 and A-613.
6. We don't have an Aluminum Window spec, but I would guess they want sheet A602 to be Aluminum Windows. I would rather use 451T storefront with vent windows. The lead time is a quarter AL Windows.
Answer: Added specification SECTION 085113 ALUMINUM WINDOWS.
7. Elevation 8/A612 has glass at 23'-3" glass. I am breaking them up similar to the center frame.
Answer: Subdivide the glass to match the center frame panel divisions.
8. No FRP doors in door schedule. I assume this is still correct even with though it's a spec section and called out in the scope sheet.
Answer: Correct, there are no FRP doors in the project.
9. Note D on the interior finish plans mentions caulking all slab control joints. Is this to be included?
Answer: Yes, caulk all exposed slab control joints.
10. There is a general Note on the finish plans (Note A under Walls on the Finish Notes & Legend) that mentions installing corner guards on all corners Add "AS NOTED" which

would be over 100, however only approximately 15 corner guards are notated. Please advise.

Answer: Provide at locations noted on drawings.

11. Are the roof access ladders steel or aluminum? The drawings say aluminum, but the specification say steel.

Answer: Steel.

12. Section 085113 Aluminum Windows was deleted by addendum 3.

a. A-602 Window Schedule is different from A-611, A-612, & A-613 Storefront elevations. What specification section applies to the windows on A-602?

Answer: Added specification SECTION 085113 ALUMINUM WINDOWS.

13. Please provide storefront vent and operable storefront specifications.

Answer: Added specification SECTION 085113 ALUMINUM WINDOWS.

14. It appears they want inside glazed 6" storefront with the glass set to the inside. No one will do that. Too much water exposure.

Answer: Center glass in frame.

15. The curtain wall details show storefront. It looks like they want the glass set to the back on the curtain wall also. This also will not work.

Answer: Center glass in frame.

16. Please clarify door 103 & 108A is to be frame type 3 and have two door leaves despite what is shown on the door schedule.

Answer: If the floor plan shows 2 doors then provide 2 doors regardless of what the Door Schedule shows for the No. of Panels.

17. There is a MAT Foundation Schedule MAT 2.0 that is 2'-0" thick, however there is no callout on the drawings. The section cut for the elevator mat foundation shows a 1'-0" thick foundation. Please clarify.

Answer: See Addendum #3 item 19 under **DRAWINGS**.

18. The two canopies appear to be custom job built canopies, however there is a canopy specification indicating a pre-manufactured canopy. Please clarify where the pre-manufactured canopies are to be installed.

Answer: Both canopies are to be pre-manufactured.

19. I noticed a discrepancy in the glazing spec (088000). The basis of design lists VE7-85 which in our nomenclature means Azuria outboard (7 = Azuria). But the breakdown lists Gray as the tint color for the outboard. Which is correct?

a. Answer: Change VE7-85 to VE3-85

20. Where does section 09 93 00 apply? All the woodwork should be prefinished as specified in other sections.

Answer: Delete section 099300 as it is not used.

21. The section cuts at the stage and ramp on S100 appear to be incorrect. There is a detail on 16/A-510 that indicates there may be masonry at this location. Is this detail affiliated with the stage/ramp?

a. Answer: Detail 16/A-510 has been revised, see attached.

22. Please confirm 60 MIL TPO is the desired membrane?

Answer: In Addendum #3, TPO thickness was changed to 80 mil.

23. Please state if the desired attachment method of the membrane is fully adhered or mechanically attached? If mechanically attached, does the architect want induction welded membrane or mechanically attached? If fully adhered, the warranty length can be extended to 20 years.

Answer: Fully adhered.

24. Please confirm a 1/2" coverboard is desired as some details do not show a coverboard.

Answer: Provide a 1/2-inch thick coverboard.

25. Please confirm the minimum insulation thickness at the low point.

Answer: Minimum thickness is 1-inch including cover board.

26. Please confirm no substrate board is needed. If a substrate board is desired, we recommend a 5/8" board. A 1/4" board is too thin to serve as a substrate board.
Answer: The substrate board is deleted as it is not needed.

SPECIFICATIONS

1. Revised Cover Sheet for Addendum No 4.
2. Revised 000110 - TABLE OF CONTENTS
 - a. Added SECTION 072119 - FOAMED-IN-PLACE INSULATION.
 - b. Added SECTION 085113 ALUMINUM WINDOWS.
3. Added SECTION 072119 - FOAMED-IN-PLACE INSULATION.
4. Revised SECTION 075423 THERMOPLASTIC-POLYOLEFIN (TPO) ROOFING
 - a. At 2.3.A.2 change Thickness to 80 mil, nominal.
 - b. At 2.3.A.3 change Exposed Face Color to White.
5. Added SECTION 085113 ALUMINUM WINDOWS.

DRAWINGS

1. Revised sheet G-000 COVER SHEET
 - a. Revised SHEET INDEX
2. Revised sheet A-510 CONSTRUCTION DETAILS
 - a. Revised detail 16.
3. Revised sheet A-612 STOREFRONT ELEVATIONS
4. Revised sheet A-613 STOREFRONT ELEVATIONS
5. Revised sheet I-456 INTERIOR ELEVATIONS AND DETAILS
 - a. Added detail 5 for Gymnasium Interior North Elevation
6. Added sheet I-457 INTERIOR ELEVATIONS AND DETAILS
 - a. Added details for Gymnasium Interior East, South, and West Elevations
7. Added sheet I-602 SIGNAGE GENERAL NOTES AND DETAILS

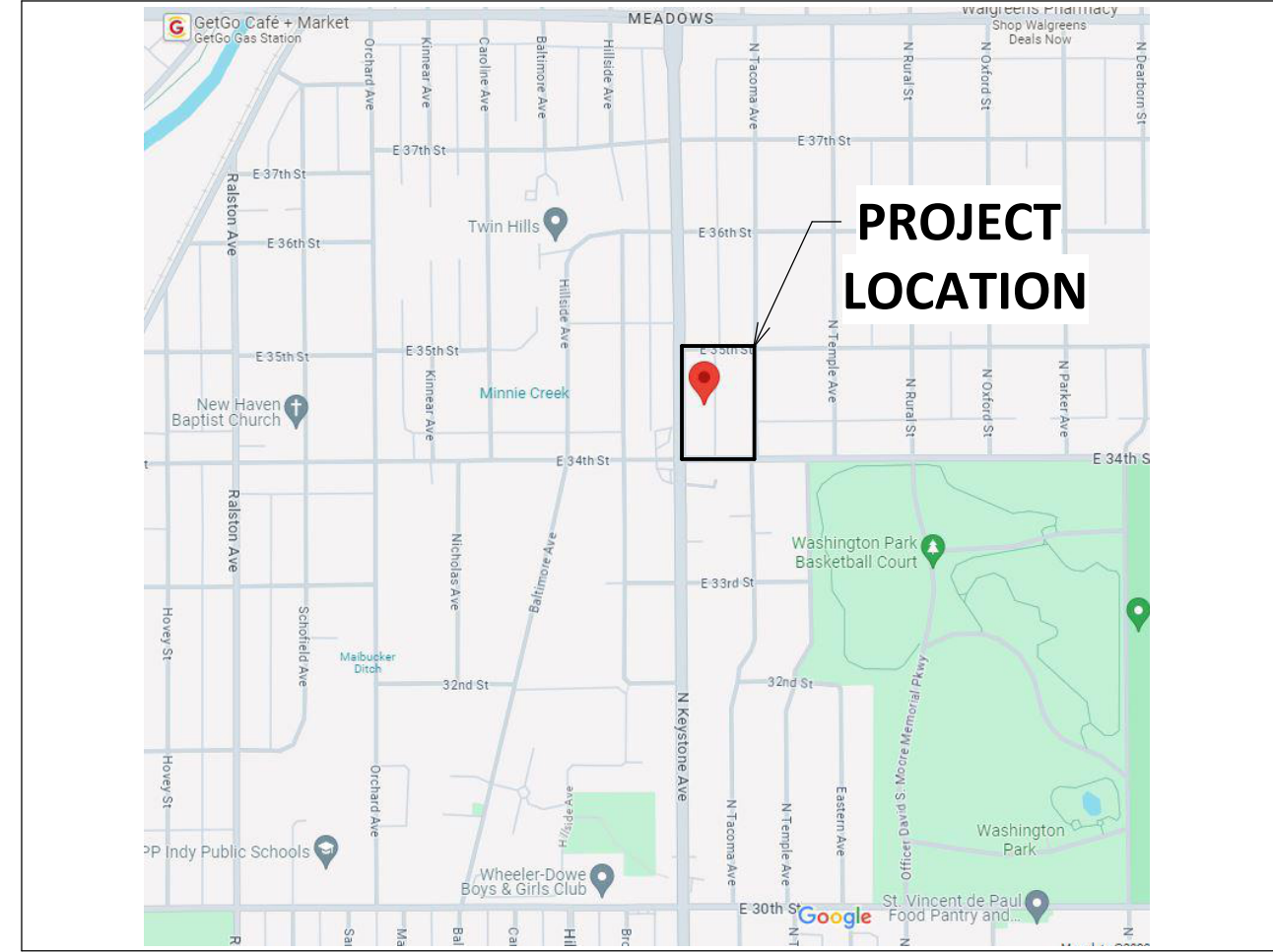
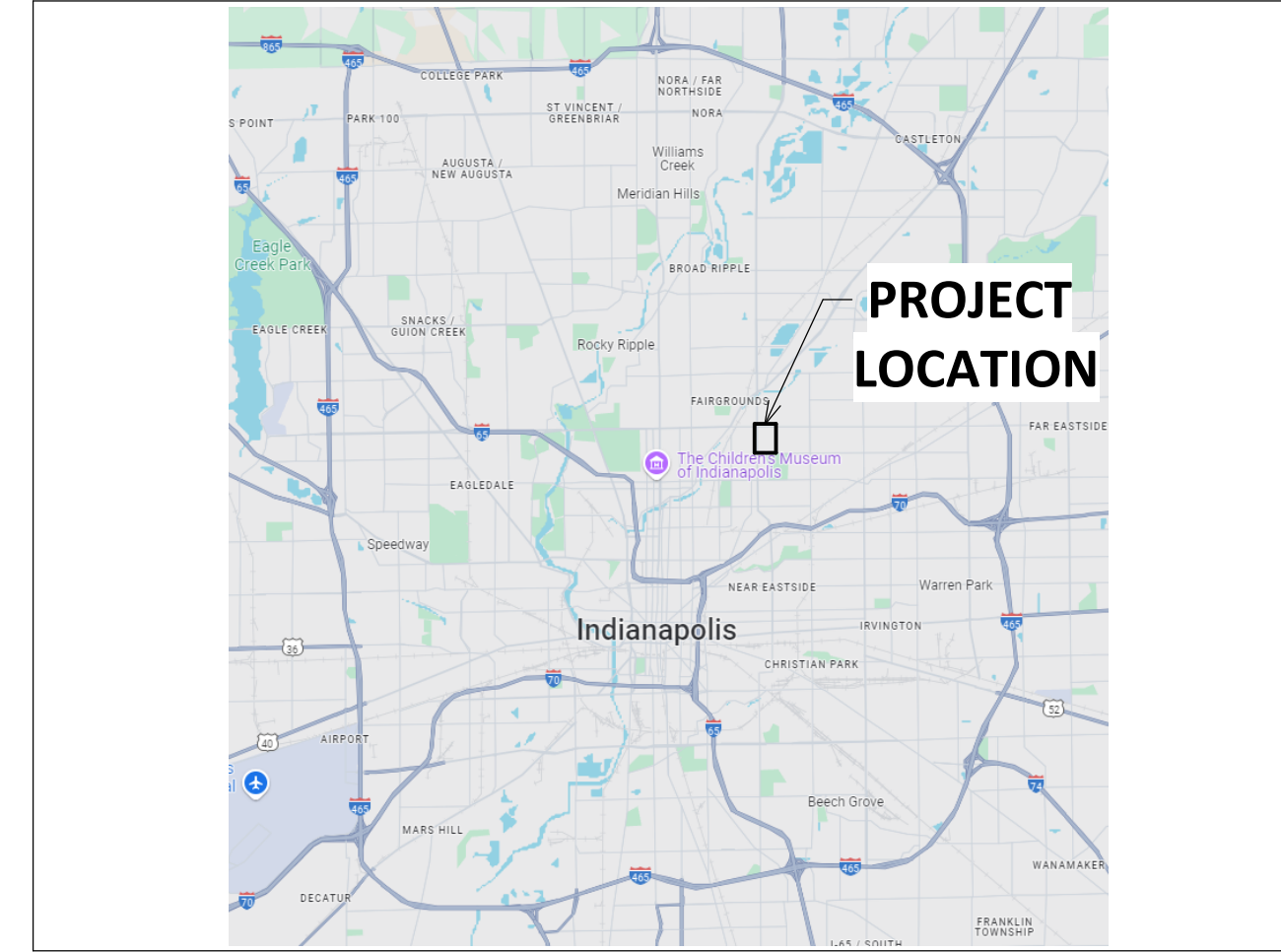
END OF ADDENDUM

INDIANAPOLIS PUBLIC SCHOOLS IPS 69 - JOYCE KILMER

3421 N KEYSTONE AVE.
INDIANAPOLIS, INDIANA

VICINITY MAP

SITE LOCATION



PROJECT INFORMATION AND SUMMARY



PROJECT TEAM

OWNER



120 E. Walnut St.
Indianapolis, IN 46204
P: (317) 226-4000

OWNER'S REPRESENTATION



429 N Pennsylvania St.
Suite 304
Indianapolis, IN 46204
P: (317) 981-7257

ARCHITECTURE & INTERIOR DESIGN



410 N. Michigan Ave.
Suite 1600
Chicago, Illinois 60611
P: (312) 755-0770



25 N Pine St.
Suite B
Indianapolis, IN 46202
P: (317) 926-1820

INTERIOR DESIGN



7222 N Shadeland Ave.
Suite 170
Indianapolis, IN 46250
P: (317) 202.0000

CIVIL AND STRUCTURAL ENGINEER



8840 Allison Pointe Blvd.
Suite 425
Indianapolis, IN 46250
P: (317) 661-1964

MECHANICAL, ELECTRICAL & PLUMBING ENGINEER



275 Veterans Way
Suite 300
Carmel, IN 46032
P: (317) 344-8044

KITCHEN CONSULTANT



302 North East Street
Studio One
Indianapolis, IN 46202
P: (317) 637-3204

CODE CONSULTANT



6640 Parkdale Place
Suite J
Indianapolis, IN 46245
P: (317) 329-7700

SHEET INDEX

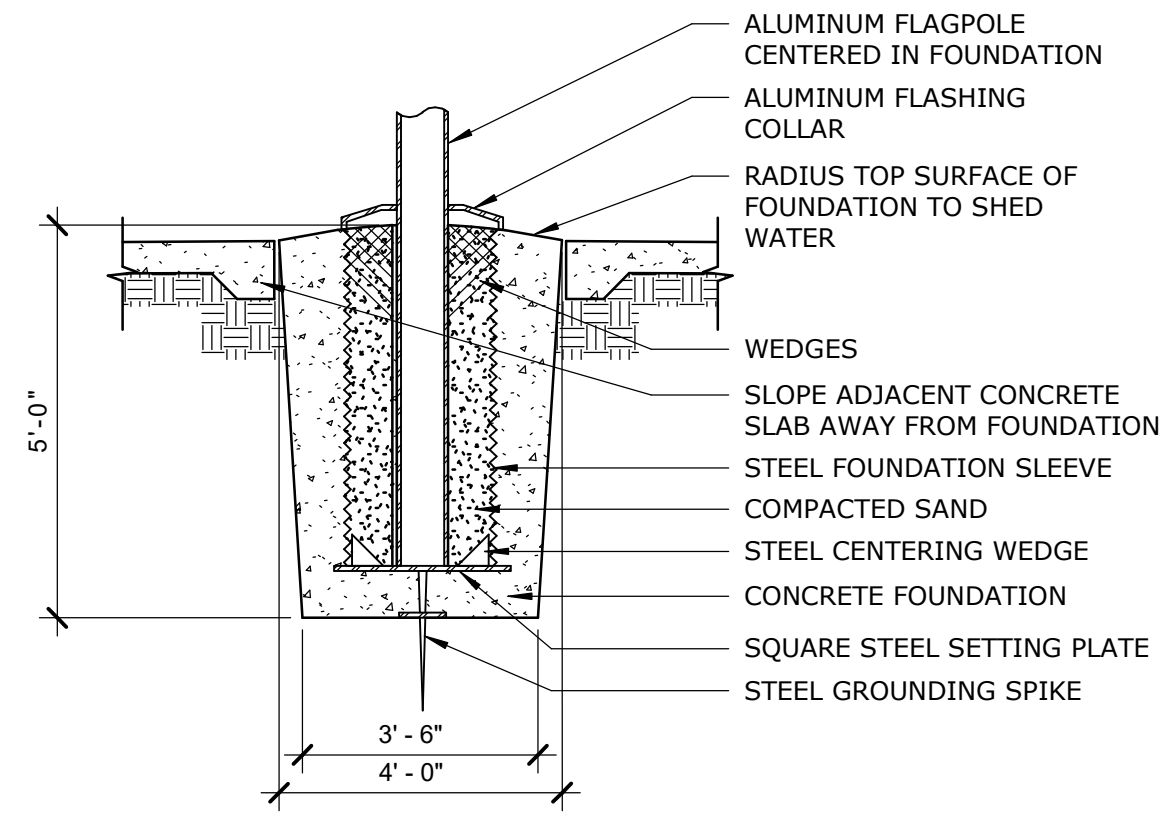
SD	DD	CD	REV	
1	GENERAL			
•	•	G-000		COVER SHEET
•	•	G-100		LIFE SAFETY PLAN
•	•	G-101		LIFE SAFETY PLAN
2	CIVIL			
•	•	CD-101		DEMOLITION PLAN
•	•	CS-101		SITE PLAN
•	•	CS-501		SITE DETAILS
•	•	CS-502		SITE DETAILS
•	•	CG-101		GRADING PLAN
•	•	CG-102		GRADING PLAN
•	•	CU-101		UTILITY PLAN
•	•	CU-102		UTILITY PLAN
•	•	CU-501		UTILITY DETAILS
•	•	CU-502		UTILITY DETAILS
•	•	CU-503		UTILITY DETAILS
•	•	CU-504		UTILITY DETAILS
•	•	CE-101		EROSION CONTROL PLAN
•	•	CE-102		POST-CONSTRUCTION EROSION CONTROL
•	•	CE-501		EROSION CONTROL DETAILS
•	•	CE-901		SWPPP SPECS SHEET
3	LANDSCAPE			
•	•	L1.10		TREE PRESERVATION
•	•	L1.11		TREE PRESERVATION
•	•	L2.00		MATERIAL SITE PLAN
•	•	L2.01		JOINT LAYOUT
•	•	L2.02		JOINT LAYOUT
•	•	L3.01		PLAYGROUND EQUIPMENT
•	•	L3.02		PLAYGROUND EQUIPMENT
•	•	L3.03		SITE DETAILS
•	•	L3.04		SITE DETAILS
•	•	L3.05		SITE DETAIL
•	•	L5.00		PLANTING SITE PLAN
•	•	L5.01		PLANTING SITE PLAN
•	•	L5.02		PLANTING SITE PLAN
•	•	L5.03		PLANTING DETAILS
4	STRUCTURAL			
•	•	S001		GENERAL NOTES & ABBREVIATIONS
•	•	S010		LOAD MAPS
•	•	S011		LOAD MAPS
•	•	S020		LEGENDS
•	•	S100		FOUNDATION PLAN
•	•	S110		SECOND FLOOR/ LOW ROOF FRAMING PLAN
•	•	S111		ROOF FRAMING PLAN
•	•	S112		CH/R ROOF FRAMING PLAN
•	•	S200		FRAMING ELEVATIONS
•	•	S201		FRAMING ELEVATIONS AT MISC STEEL
•	•	S400		ENLARGED PLANS
•	•	S500		FOUNDATION SCHEDULES, SECTIONS, & DETAILS
•	•	S501		FOUNDATION SCHEDULES, SECTIONS, & DETAILS
•	•	S502		FOUNDATION SCHEDULES, SECTIONS, & DETAILS
•	•	S510		MASONRY SCHEDULES, SECTIONS, & DETAILS
•	•	S520		FRAMING SCHEDULES, SECTIONS, & DETAILS
•	•	S521		FRAMING SCHEDULES, SECTIONS, & DETAILS
•	•	S522		FRAMING SCHEDULES, SECTIONS, & DETAILS
•	•	S523		FRAMING SCHEDULES, SECTIONS, & DETAILS
•	•	S524		FRAMING SCHEDULES, SECTIONS, DETAILS
•	•	S700		SPECIAL INSPECTIONS
•	•	S800		MODEL VIEWS
5.2	ARCHITECTURAL			
•	•	A-001		ARCHITECTURAL GENERAL NOTES AND ABBREVIATIONS
•	•	A-003		WALL TYPES
•	•	A-004		TYPICAL MOUNTING HEIGHTS & ADA DETAILS
•	•	A-010		AXONOMETRIC VIEWS
•	•	A-011		EXTERIOR PERSPECTIVES
•	•	A-101		01 FLOOR PLAN - OVERALL
•	•	A-102		02 FLOOR PLAN - OVERALL
•	•	A-103		ROOF PLAN - OVERALL
•	•	A-103A		ROOF DETAILS
•	•	A-103B		ROOF DETAILS
•	•	A-111A		01 FLOOR PLAN - AREA A
•	•	A-111B		01 FLOOR PLAN - AREA B
•	•	A-112A		02 FLOOR PLAN - AREA A
•	•	A-112B		02 FLOOR PLAN - AREA B
•	•	A-121A		01 FLOOR RCP - AREA A
•	•	A-121B		01 FLOOR RCP - AREA B
•	•	A-122A		02 FLOOR RCP - AREA A
•	•	A-122B		02 FLOOR RCP - AREA B
•	•	A-123		CEILING TYPICAL DETAILS
•	•	A-200		OVERALL EXTERIOR ELEVATIONS
•	•	A-201		EXTERIOR ELEVATIONS
•	•	A-202		EXTERIOR ELEVATIONS
•	•	A-210		ARCHITECTURAL PRECAST CONCRETE PANELS
•	•	A-211		ARCHITECTURAL PRECAST CONCRETE PANELS
•	•	A-212		ARCHITECTURAL PRECAST CONCRETE PANELS
•	•	A-301		BUILDING SECTIONS
•	•	A-311		WALL SECTIONS
•	•	A-312		WALL SECTIONS - ADMIN & MEDIA CENTER
•	•	A-313		WALL SECTIONS - BLDG ENTRIES
•	•	A-314		WALL SECTIONS - ENTRY CANOPIES
•	•	A-315		WALL SECTIONS (WEST)

SHEET INDEX

SD	DD	CD	REV	
•	•	A-316		WALL SECTIONS (WEST)
•	•	A-317		WALL SECTIONS (NORTH)
•	•	A-320		WALL SECTIONS (NORTH)
•	•	A-321		WALL SECTIONS (EAST)
•	•	A-322		WALL SECTIONS (EAST)
•	•	A-325		WALL SECTIONS (MISC)
•	•	A-326		WALL SECTIONS (FIREWALL)
•	•	A-401		ENLARGED PLANS, ELEVATION - TLT
•	•	A-402		ENLARGED PLANS, ELEVATION - TLT
•	•	A-405		STAIR PLANS, SECTIONS AND DETAILS
•	•	A-406		STAIR PLANS, SECTIONS AND DETAILS
•	•	A-410		ELEVATOR PLANS, SECTIONS
•	•	A-501		PLAN DETAILS
•	•	A-502		PLAN DETAILS
•	•	A-510		CONSTRUCTION DETAILS
•	•	A-601		DOOR AND FRAME SCHEDULE
•	•	A-602		WINDOW SCHEDULE
•	•	A-611		STOREFRONT ELEVATIONS
•	•	A-612		STOREFRONT ELEVATIONS
•	•	A-613		STOREFRONT ELEVATIONS
6	INTERIORS			
•	•	I-100A		01 FINISH FLOOR PLAN - OVERALL
•	•	I-100B		02 FINISH FLOOR PLAN - OVERALL
•	•	I-131A		01 INTERIOR FINISH PLAN - AREA A
•	•	I-131B		01 INTERIOR FINISH PLAN - AREA B
•	•	I-132A		02 INTERIOR FINISH PLAN - AREA A
•	•	I-132B		02 INTERIOR FINISH PLAN - AREA B
•	•	I-201A		01 INTERIOR SIGNAGE PLAN - AREA A
•	•	I-201B		01 INTERIOR SIGNAGE PLAN - AREA B
•	•	I-202A		02 INTERIOR SIGNAGE PLAN - AREA A
•	•	I-202B		02 INTERIOR SIGNAGE PLAN - AREA B
•	•	I-451		INTERIOR RENDERINGS
•	•	I-452		INTERIOR RENDERINGS
•	•	I-453		INTERIOR ELEVATIONS - LOBBY
•	•	I-454		INTERIOR ELEVATIONS & DETAILS
•	•	I-455		INTERIOR ELEVATIONS & DETAILS
•	•	I-456		INTERIOR ELEVATIONS & DETAILS
•	•	I-457		INTERIOR ELEVATIONS & DETAILS
•	•	I-471		CASEWORK DETAILS
•	•	I-601		INTERIOR FINISH LEGEND, NOTES, AND TRANSITIONS
•	•	I-602		SIGNAGE GENERAL NOTES AND DETAILS
•	•	I-911		01 FLOOR OVERALL FURNITURE PLAN
•	•	I-911A		01 VISUAL DISPLAY BOARD & FURNITURE FLOOR PLAN - AREA A
•	•	I-911B		01 VISUAL DISPLAY BOARD & FURNITURE FLOOR PLAN - AREA B
•	•	I-912		02 FLOOR OVERALL FURNITURE PLAN
•	•	I-912A		02 VISUAL DISPLAY BOARD & FURNITURE FLOOR PLAN - AREA A
•	•	I-912B		02 VISUAL DISPLAY BOARD & FURNITURE FLOOR PLAN - AREA B
7	FOODSERVICE			
•	•	K100		FOODSERVICE GENERAL NOTES & SHEET INDEX
•	•	K101		FOODSERVICE LAYOUT
•	•	K200		FOODSERVICE EQUIPMENT SCHEDULE
•	•	K300		FOODSERVICE PLUMBING & ELECTRICAL LAYOUT
8	PLUMBING			
•	•	P-000		SYMBOLS AND ABBREVIATIONS
•	•	P-110A		FOUNDATION PLUMBING PLAN - AREA A
•	•	P-110B		FOUNDATION PLUMBING PLAN - AREA B
•	•	P-111A		01 FLOOR PLUMBING PLAN - AREA A
•	•	P-111B		01 FLOOR PLUMBING PLAN - AREA B
•	•	P-112A		02 FLOOR PLUMBING PLAN - AREA A
•	•	P-112B		02 FLOOR PLUMBING PLAN - AREA B
•	•	P-113A		03 FLOOR PLUMBING PLAN - AREA A
•	•	P-113B		03 FLOOR PLUMBING PLAN - AREA B
•	•	P-401		PLUMBING ENLARGED PLANS
•	•	P-501		PLUMBING DETAILS
•	•	P-502		PLUMBING DETAILS
•	•	P-601		PLUMBING SCHEDULES
•	•	P-602		PLUMBING SCHEDULES
•	•	P-901		PLUMBING DIAGRAMS
•	•	P-902		PLUMBING DIAGRAMS
9	MECHANICAL			
•	•	M-000		SYMBOLS AND ABBREVIATIONS
•	•	MH-111A		01 FLOOR MECHANICAL PLAN - AREA A
•	•	MH-111B		01 FLOOR MECHANICAL PLAN - AREA B
•	•	MH-112A		02 FLOOR MECHANICAL PLAN - AREA A
•	•	MH-112B		02 FLOOR MECHANICAL PLAN - AREA B
•	•	MH-113A		03 FLOOR MECHANICAL PLAN - AREA A
•	•	MH-113B		03 FLOOR MECHANICAL PLAN - AREA B
•	•	MP-111A		01 FLOOR MECHANICAL PIPING PLAN - AREA A
•	•	MP-111B		01 FLOOR MECHANICAL PIPING PLAN - AREA B
•	•	MP-112A		02 FLOOR MECHANICAL PIPING PLAN - AREA A
•	•	MP-112B		02 FLOOR MECHANICAL PIPING PLAN - AREA B
•	•	M-501		MECHANICAL ENLARGED PLANS
•	•	M-601		MECHANICAL SCHEDULES
•	•	M-901		TEMPERATURE CONTROL DIAGRAMS
•	•	M-902		TEMPERATURE CONTROL DIAGRAMS

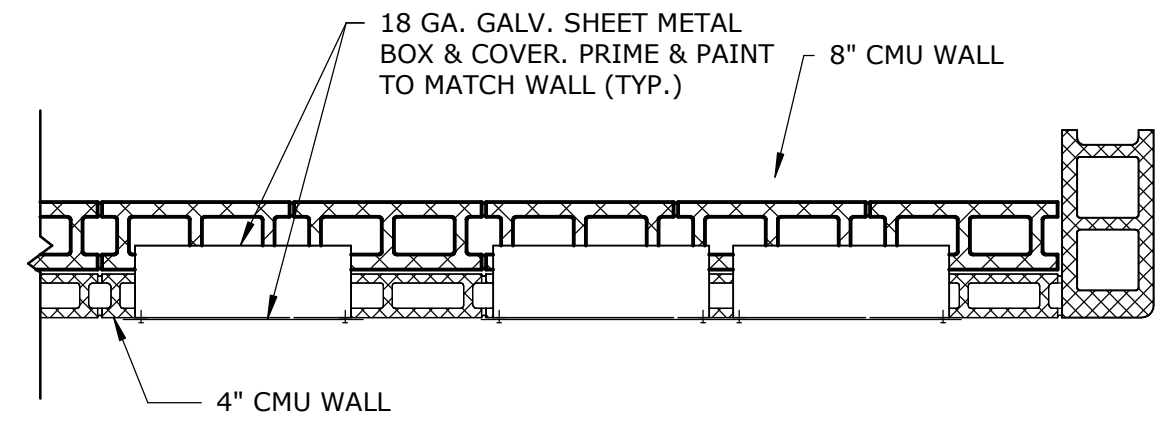
SHEET INDEX

SD	DD	CD	REV	
•	•	M-903		TEMPERATURE CONTROL DIAGRAMS
•	•	M-904		TEMPERATURE CONTROL DIAGRAMS
•	•	M-905		TEMPERATURE CONTROL DIAGRAMS
•	•	M-906		TEMPERATURE CONTROL DIAGRAMS
10	ELECTRICAL			
•	•	E-000		SYMBOLS AND ABBREVIATIONS
•	•	ES-100		ELECTRICAL SITE PLAN
•	•	EL-111A		01 FLOOR LIGHTING PLAN - AREA A
•	•	EL-111B		01 FLOOR LIGHTING PLAN - AREA B
•	•	EL-112A		02 FLOOR LIGHTING PLAN - AREA A
•	•	EL-112B		02 FLOOR LIGHTING PLAN - AREA B
•	•	EP-111A		01 FLOOR ELECTRICAL PLAN - AREA A
•	•	EP-111B		01 FLOOR ELECTRICAL PLAN - AREA B
•	•	EP-112A		02 FLOOR ELECTRICAL PLAN - AREA A
•	•	EP-112B		02 FLOOR ELECTRICAL PLAN - AREA B
•	•	EP-113A		03 FLOOR ELECTRICAL PLAN - AREA A
•	•	EP-113B		03 FLOOR ELECTRICAL PLAN - AREA B
•	•	E-401		ENLARGED ELECTRICAL PLANS
•	•	E-501		ELECTRICAL DETAILS
•	•	E-502		ELECTRICAL DETAILS
•	•	E-601		ELECTRICAL SCHEDULES
•	•	E-602		ELECTRICAL SCHEDULES
•	•	E-901		ELECTRICAL ONE-LINE DIAGRAM
11	FIRE SUPPRESSION			
•	•	FP-111A		01 FLOOR FIRE SUPPRESSION PLAN - AREA A
•	•	FP-111B		01 FLOOR FIRE SUPPRESSION PLAN - AREA B
•	•	FP-112A		02 FLOOR FIRE SUPPRESSION PLAN - AREA A
•	•			



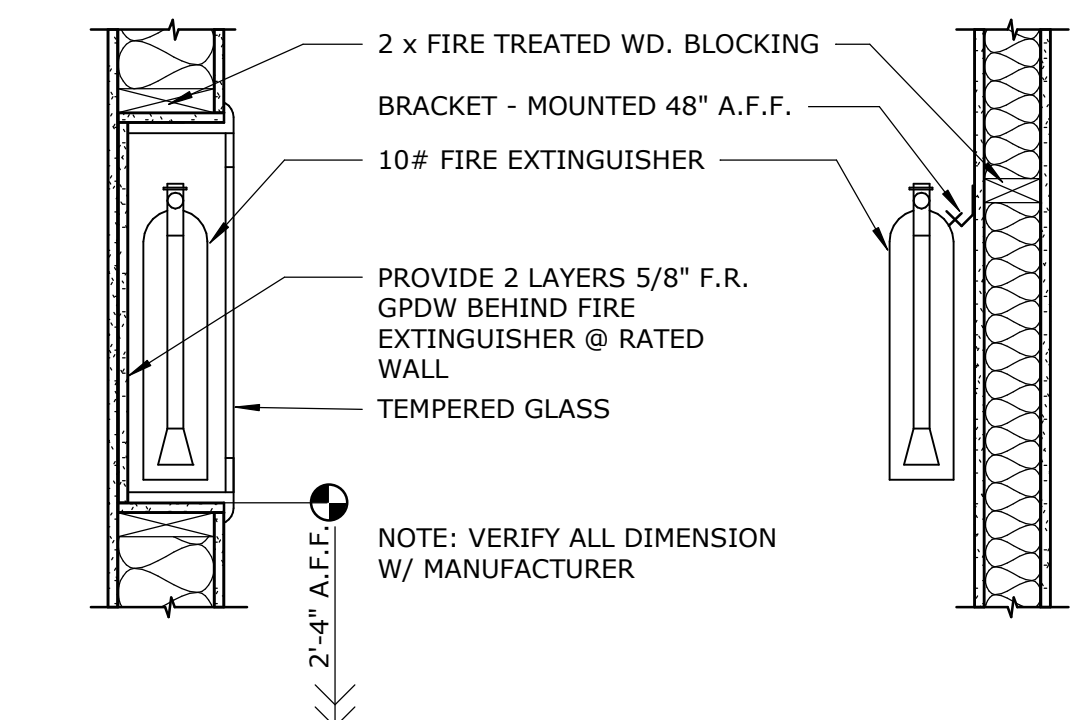
19 FLAGPOLE FOUNDATION DET.

A-510 1 1/2" = 1'-0"



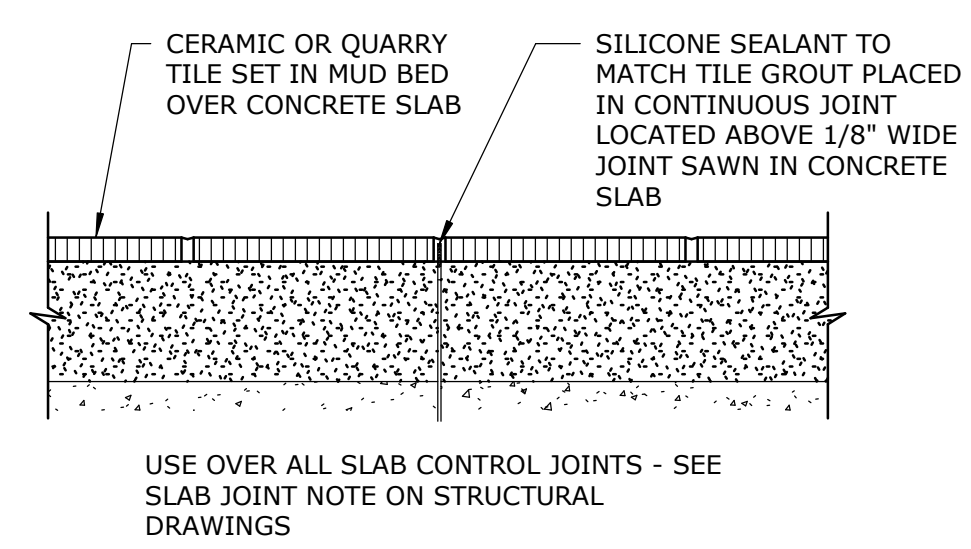
15 ELEC. PANEL COVER PLAN VIEW

A-510 3/4" = 1'-0"



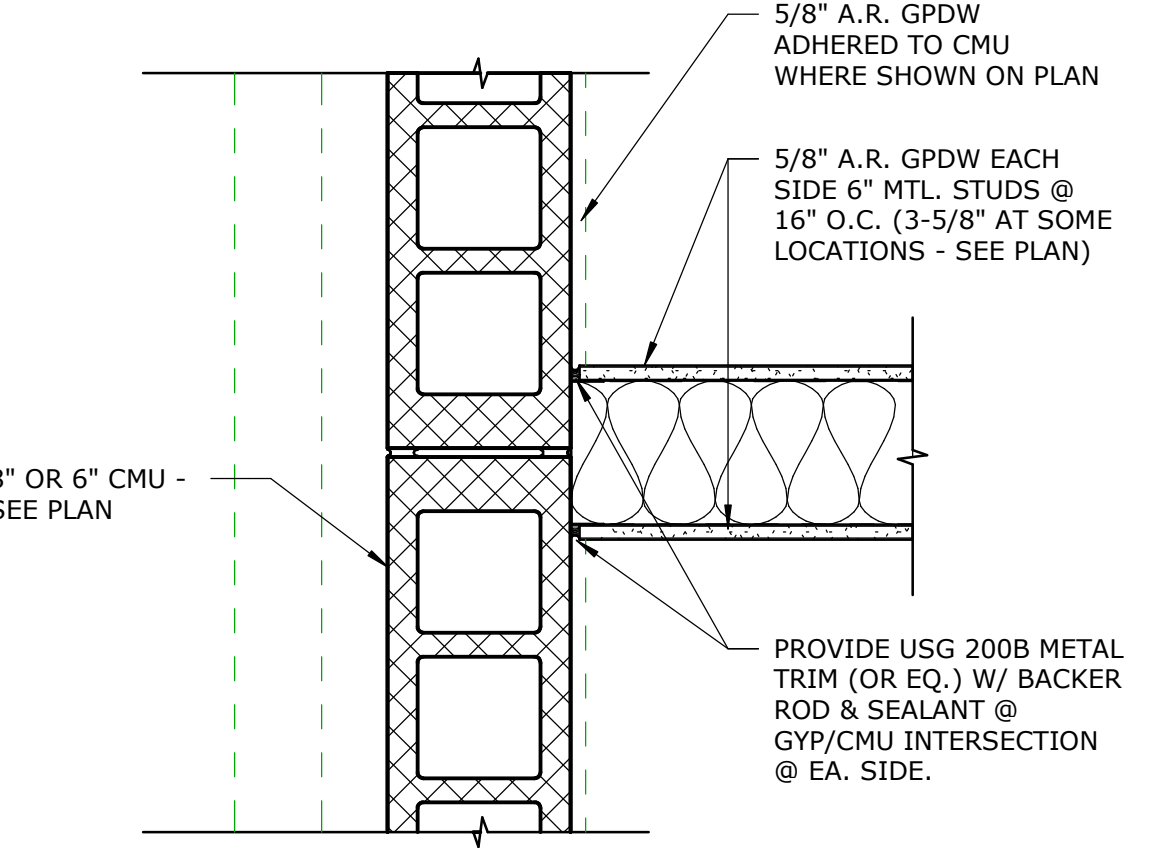
10 FE & FEC DETAIL @ STUD WALL

A-510 1" = 1'-0"



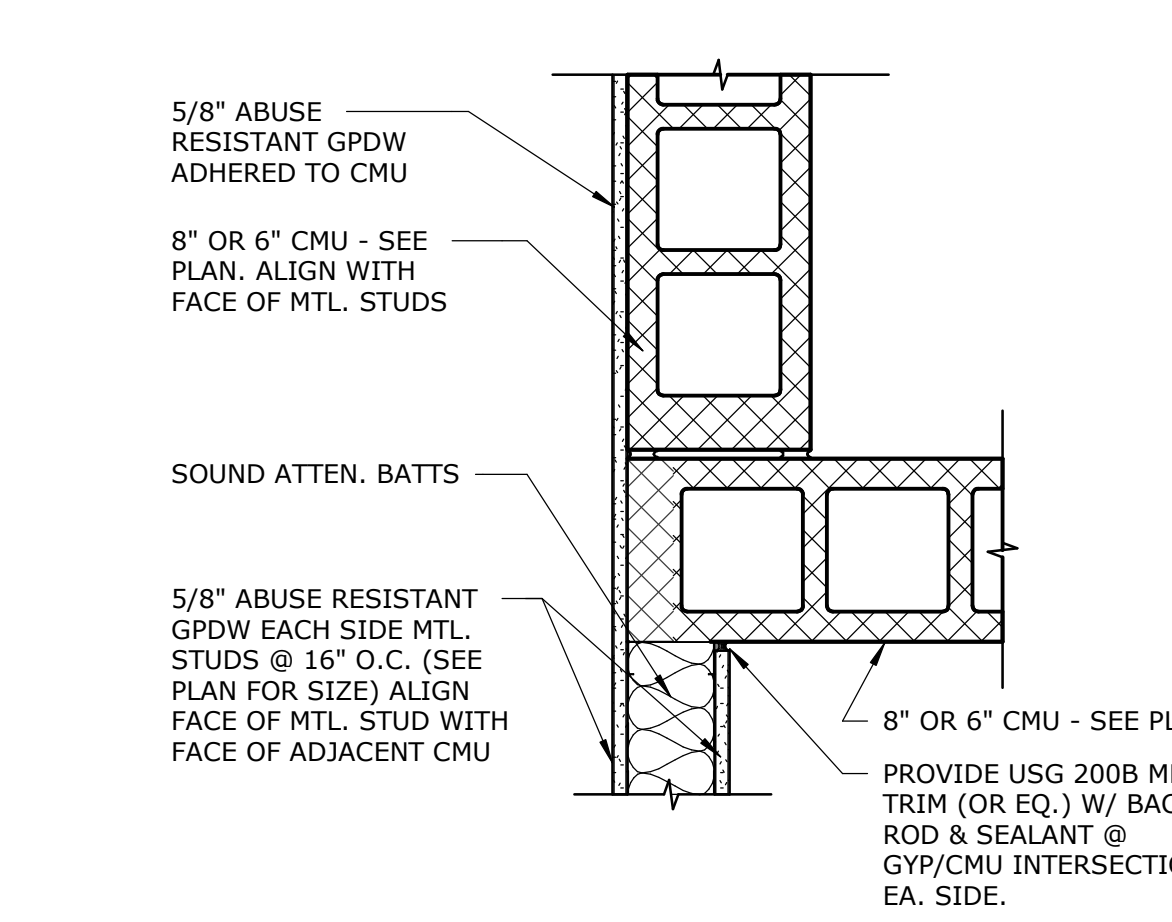
5 HARD TILE CONTROL JOINT

A-510 3" = 1'-0"



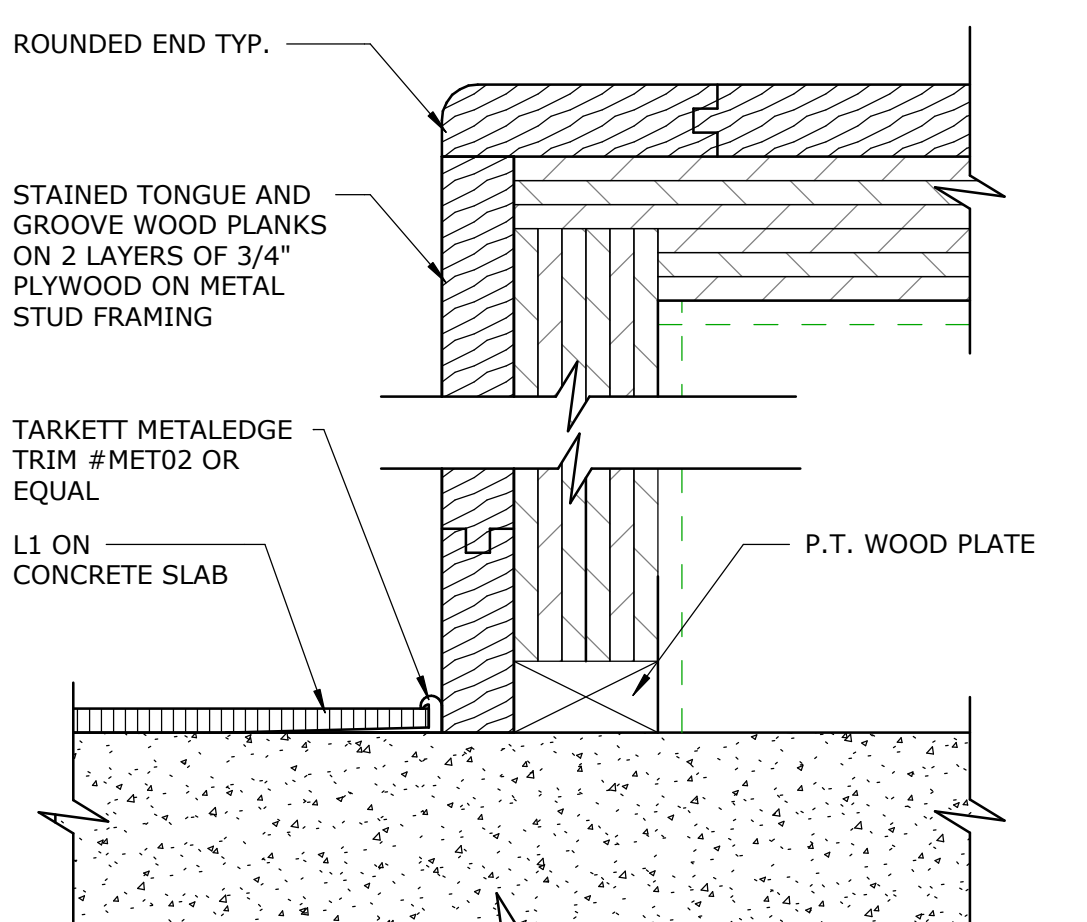
18 TYP. GYP - CMU TRANSITION

A-510 1 1/2" = 1'-0"



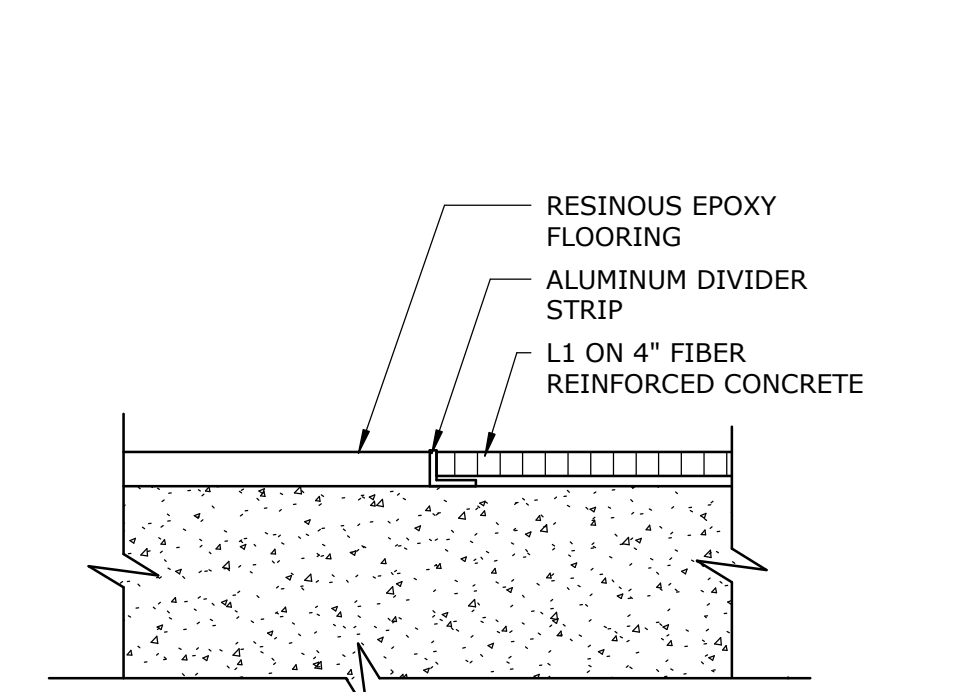
14 TYP. GYP - CMU TRANSITION

A-510 1 1/2" = 1'-0"



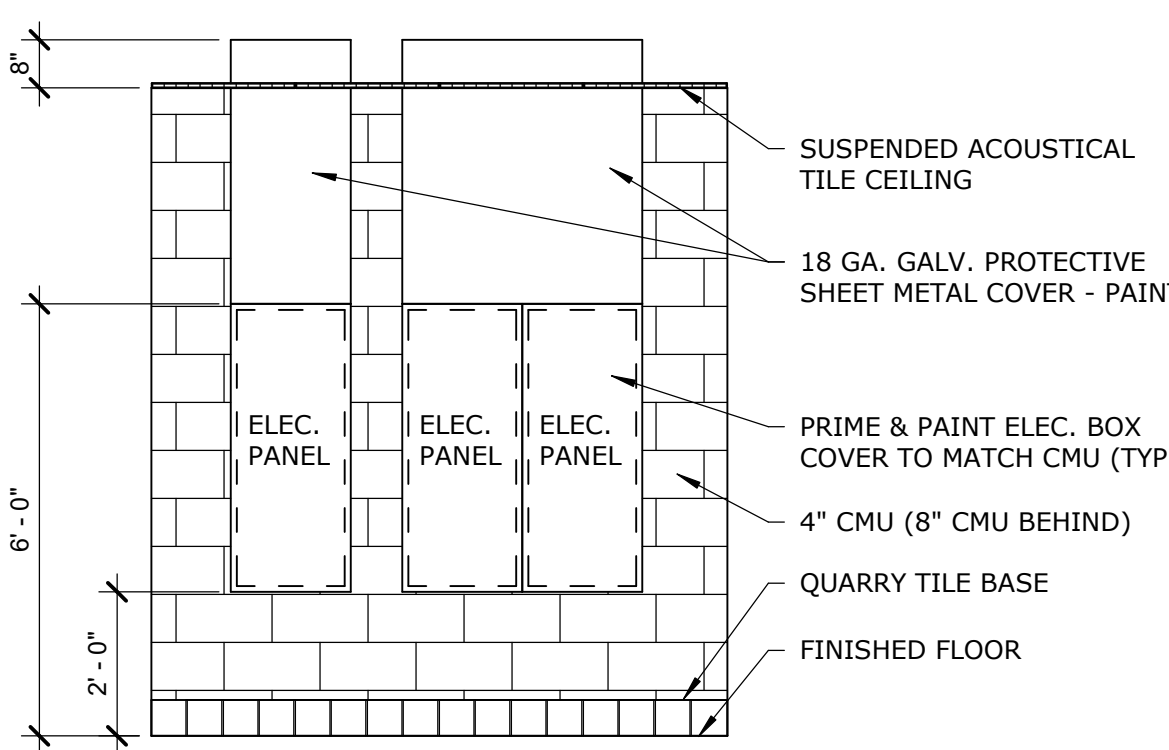
9 TRAN. DET. @ LEARNING STAIR

A-510 6" = 1'-0"



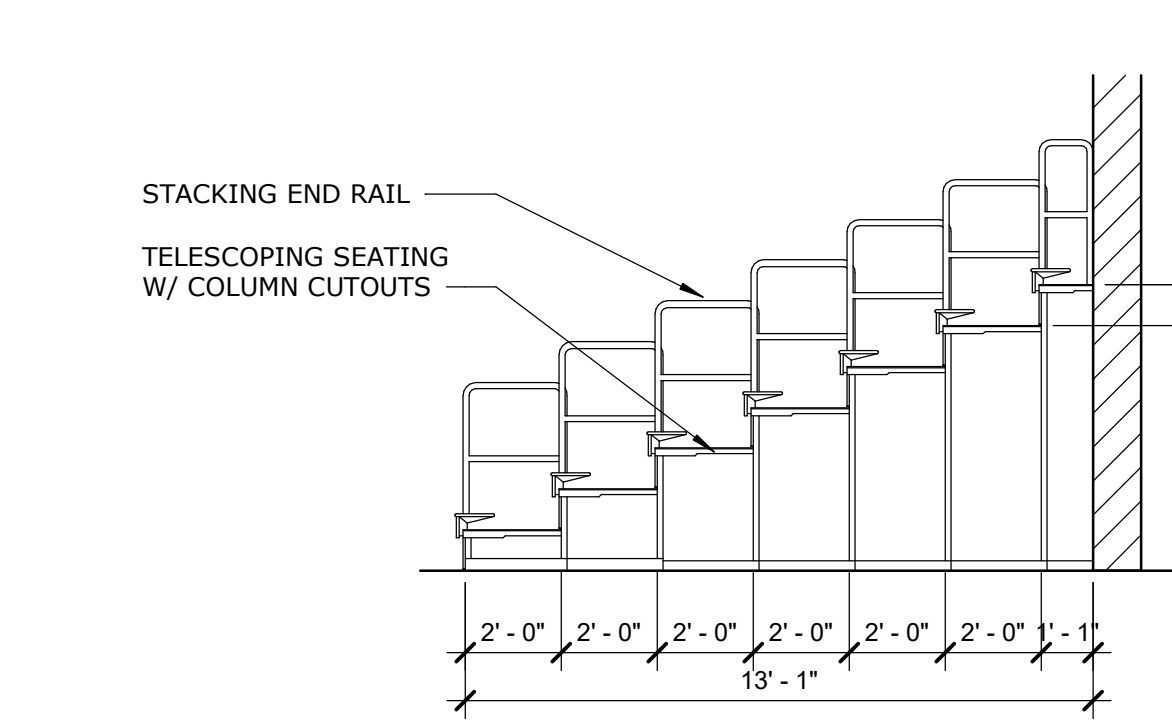
4 LVT TO EPOXY FLOOR TRANS.

A-510 6" = 1'-0"



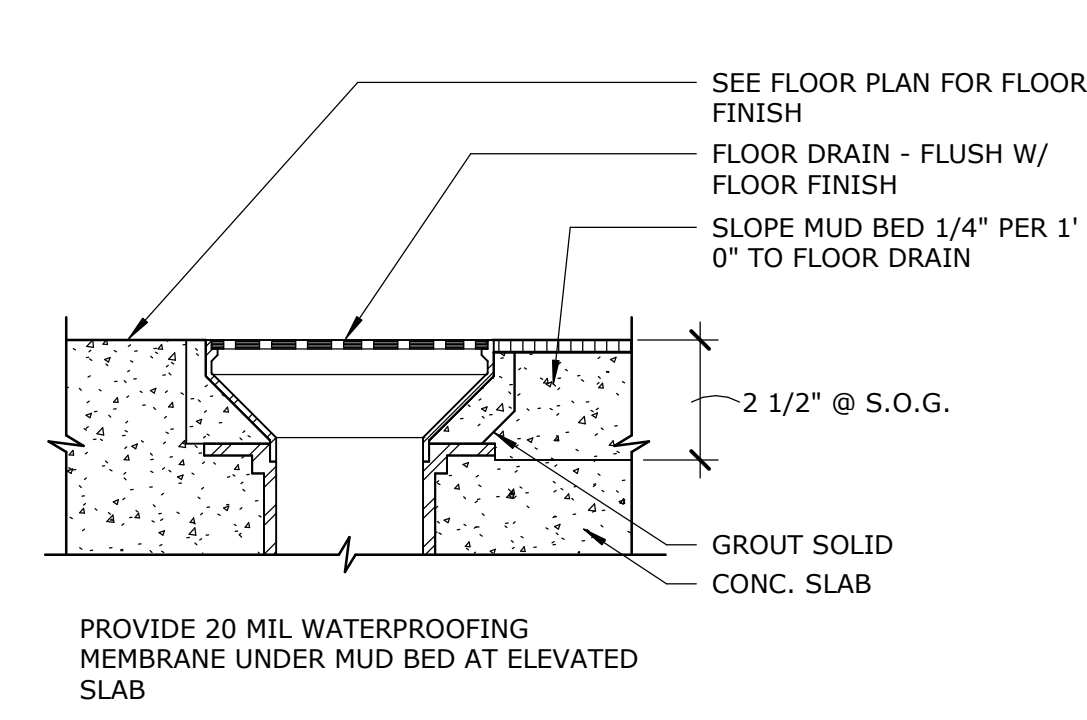
17 ELEC. PANEL COVER ELEV.

A-510 3/8" = 1'-0"



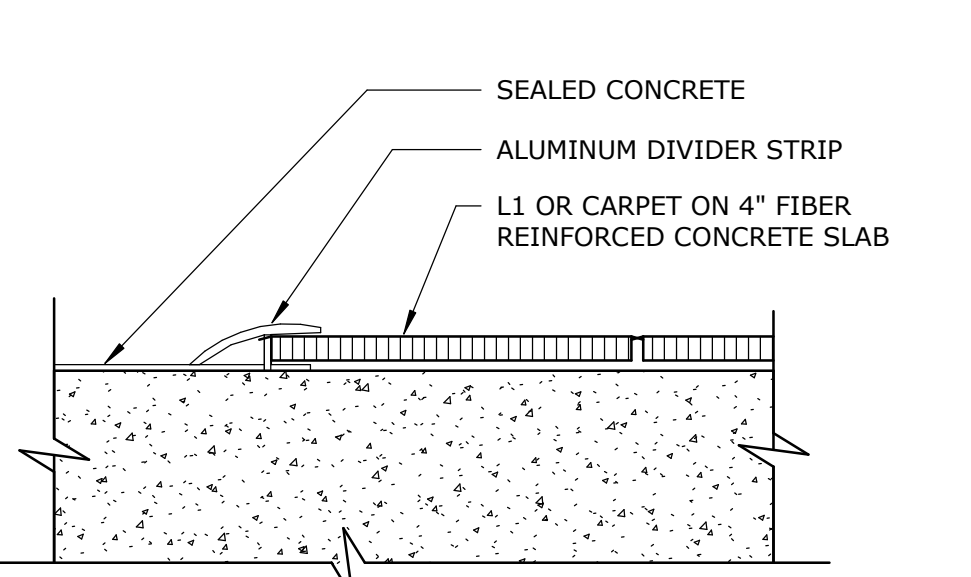
13 SECTION @ TELESCOPING BLEACHERS

A-510 1/4" = 1'-0"



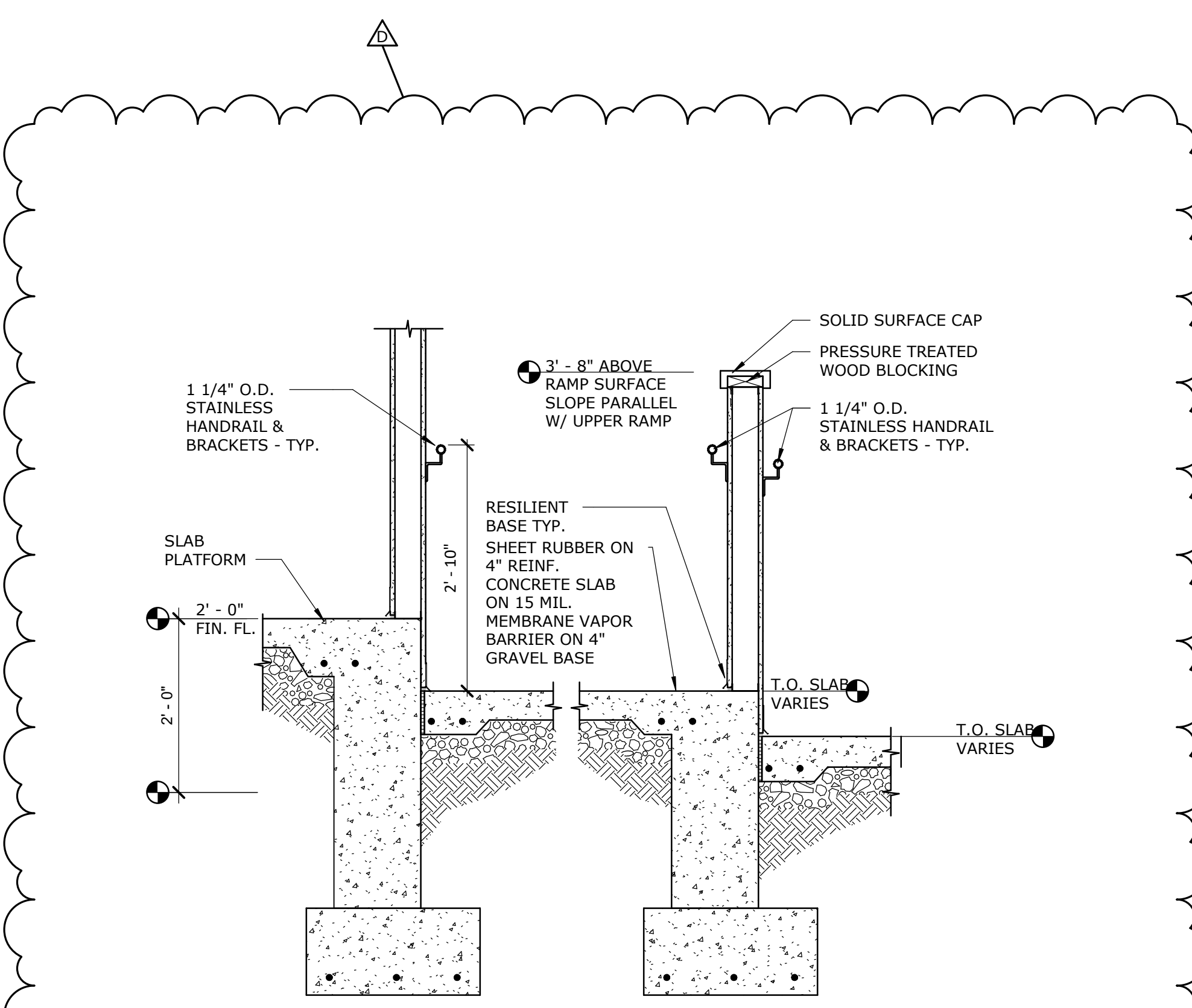
8 FLOOR DRAIN

A-510 3" = 1'-0"



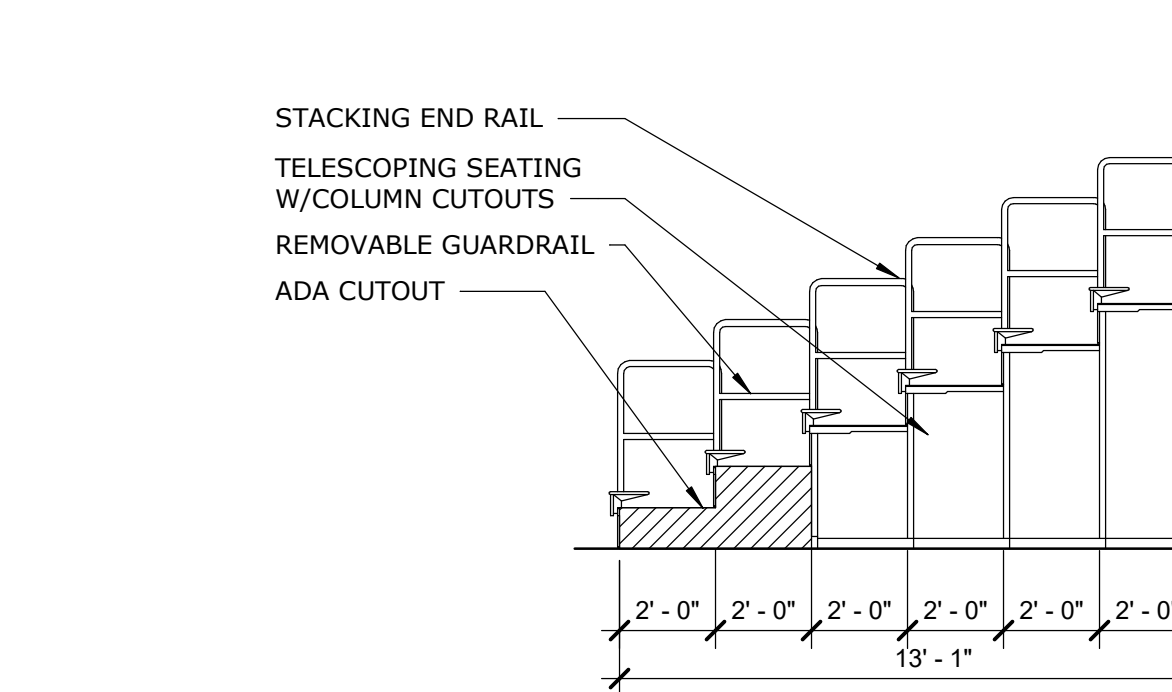
3 LVT/CARPET TO CONC. TRAN.

A-510 6" = 1'-0"



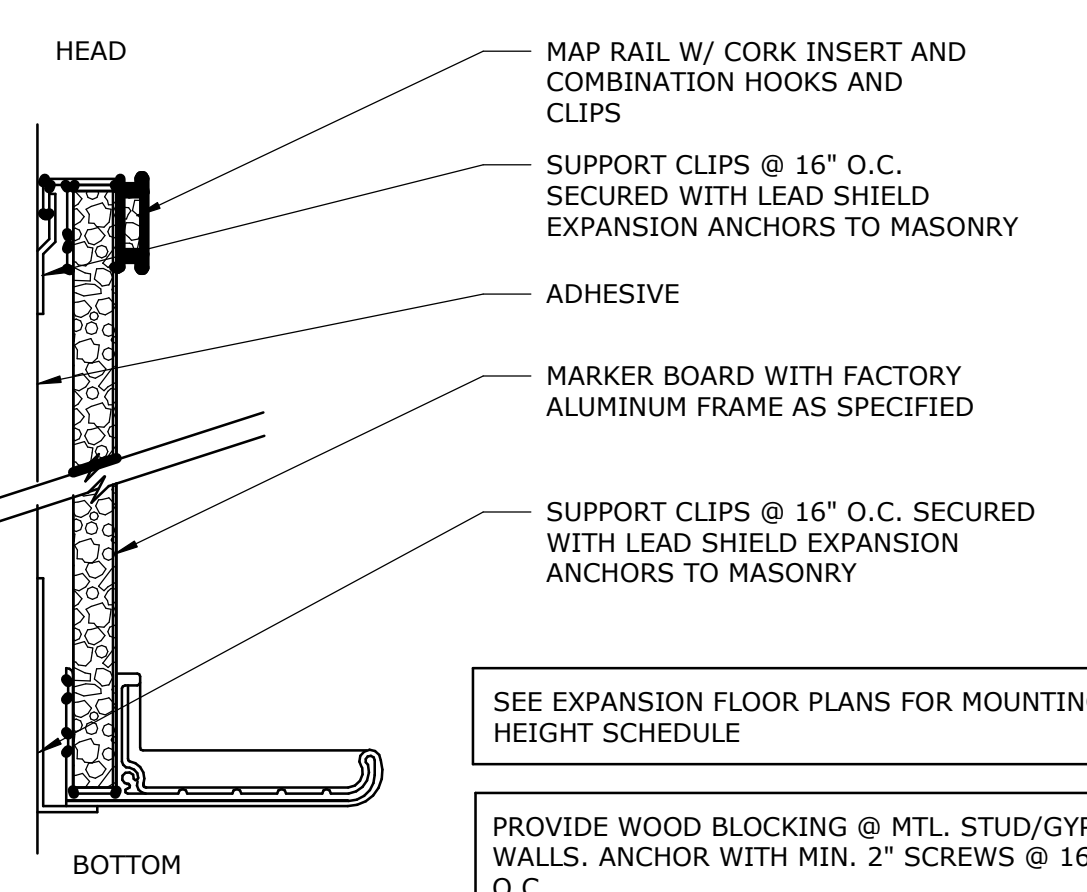
16 DETAIL @ STAGE RAMP

A-510 3/4" = 1'-0"



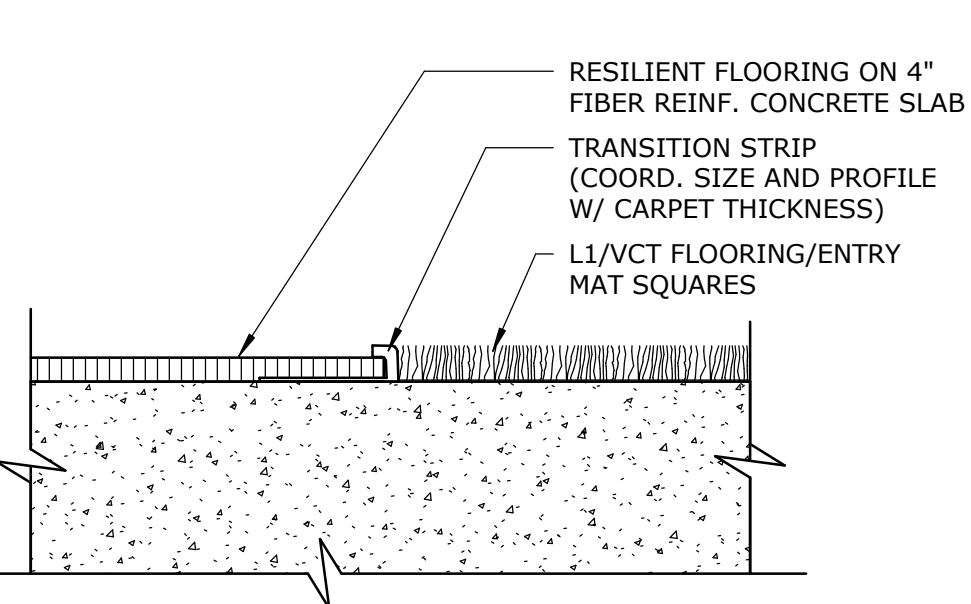
12 SECTION @ TELESCOPING BLEACHERS - ADA

A-510 1/4" = 1'-0"



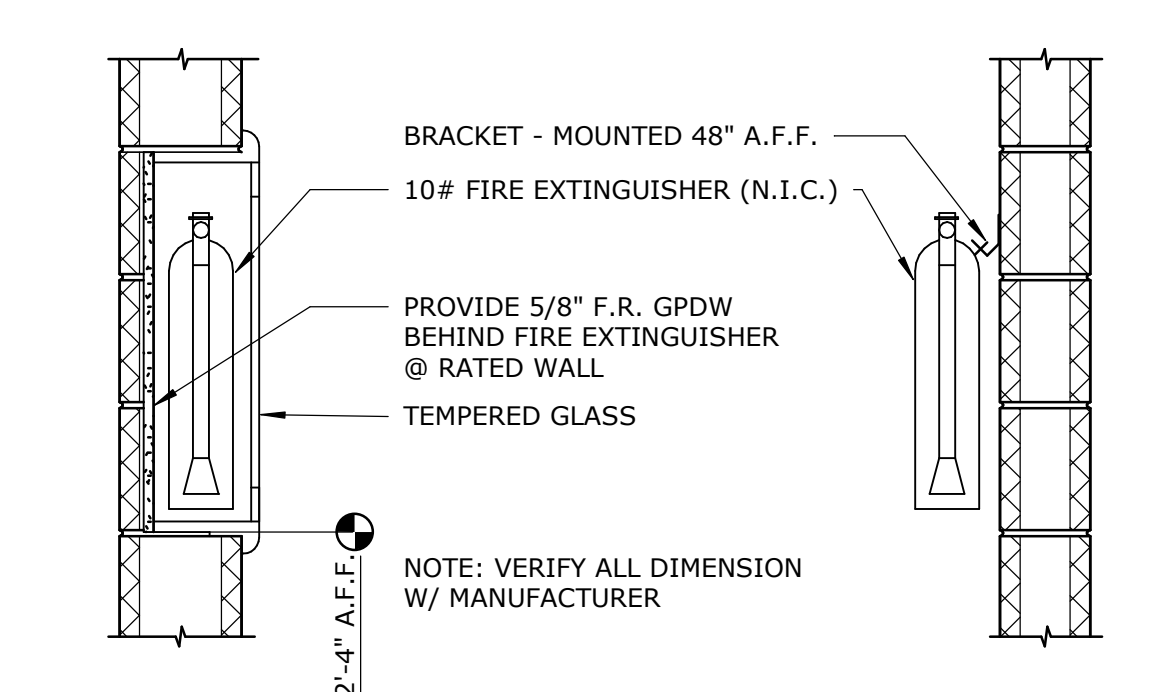
7 TYP. MARKER BOARD

A-510 6" = 1'-0"



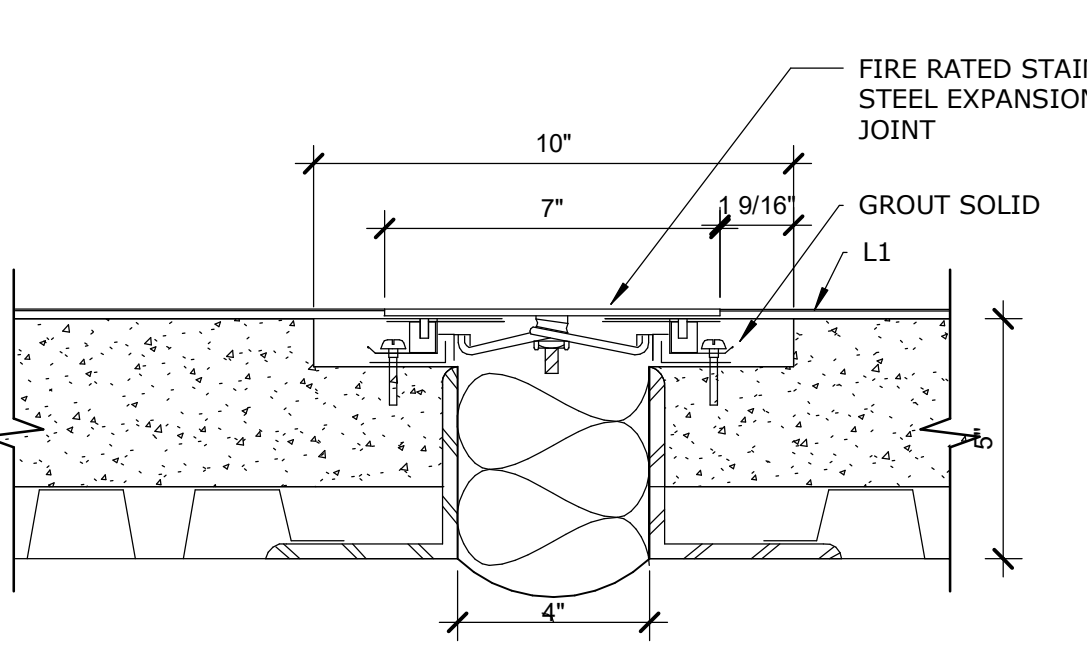
2 LVT/VCT-CARPET TILE TRAN.

A-510 6" = 1'-0"



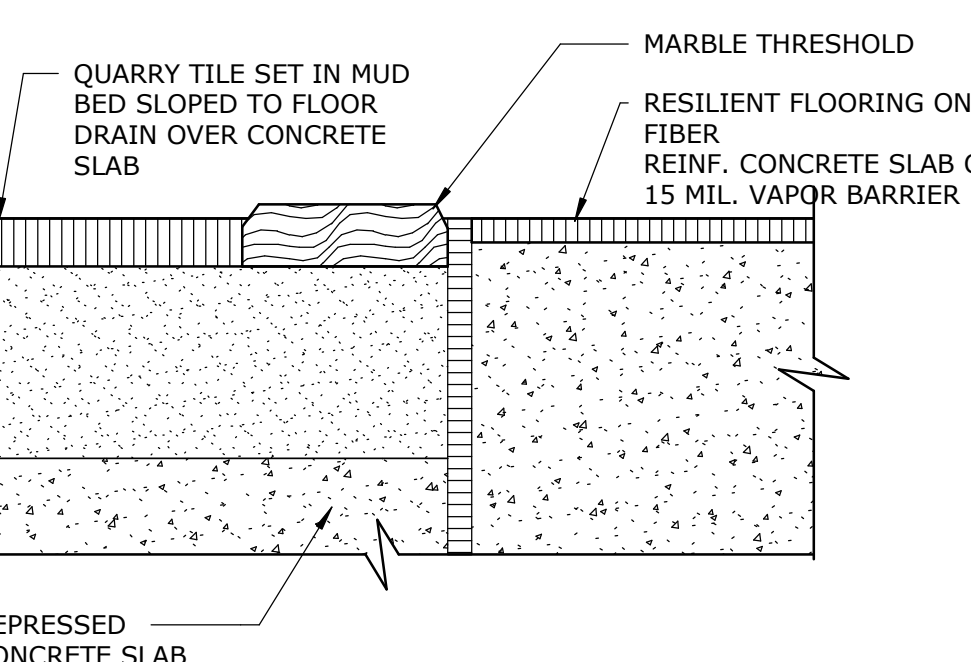
11 FE & FEC DETAIL @ CMU WALL

A-510 1" = 1'-0"



6 EXP. JOINT @ ELEVATED SLAB

A-510 3" = 1'-0"



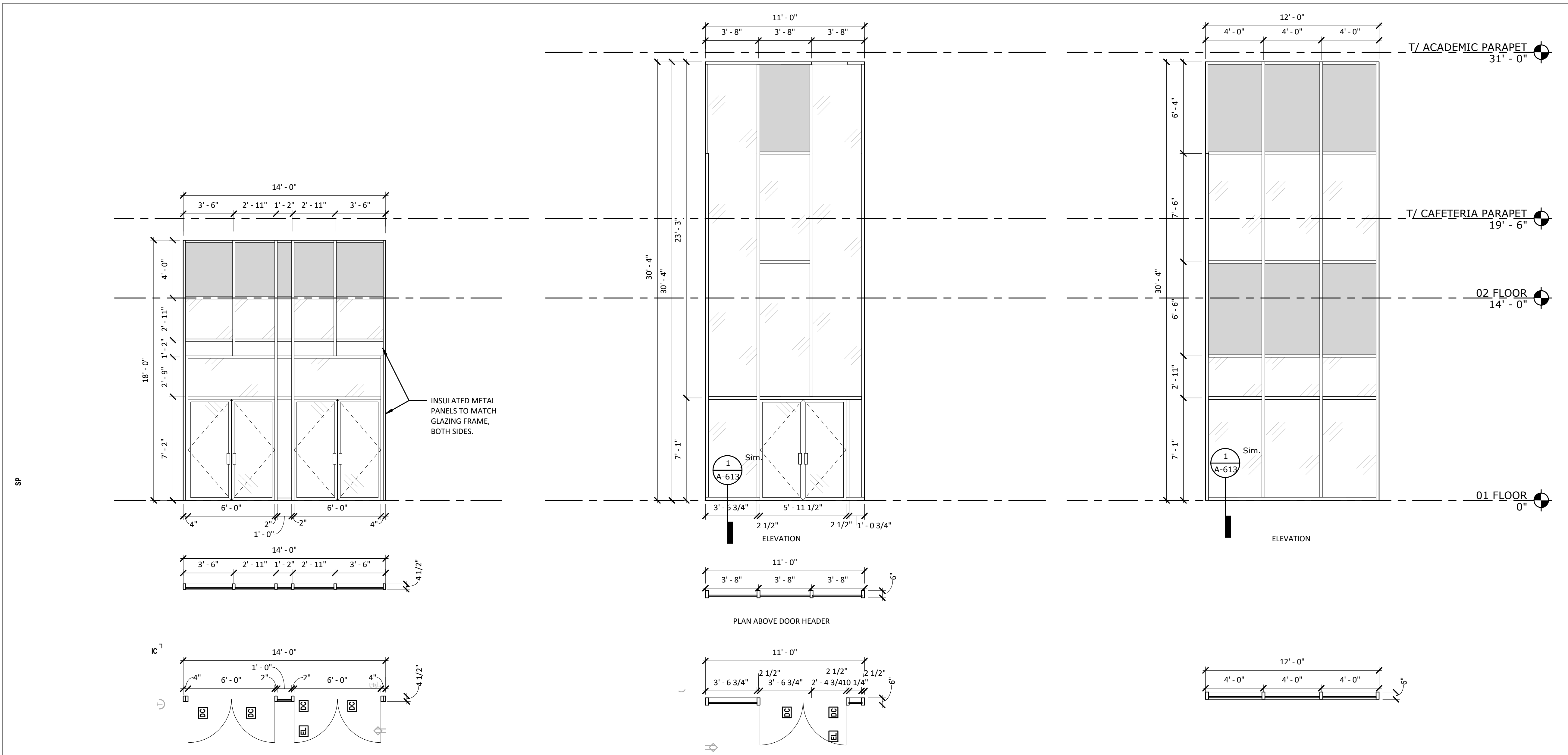
1 Q.T. TO LVT, VCT TRAN.

A-510 6" = 1'-0"

REVISIONS		
No.	Description	Date
	95% CD SET	12-18-24
	100% CD SET	01-17-25
D	ADD #4	03-03-25

ISSUE DATE: 01/17/2025	
DRAWN: Author	CHECKED: Checker
PROJECT NO.: P23-0116	
REVISION NO.: D	

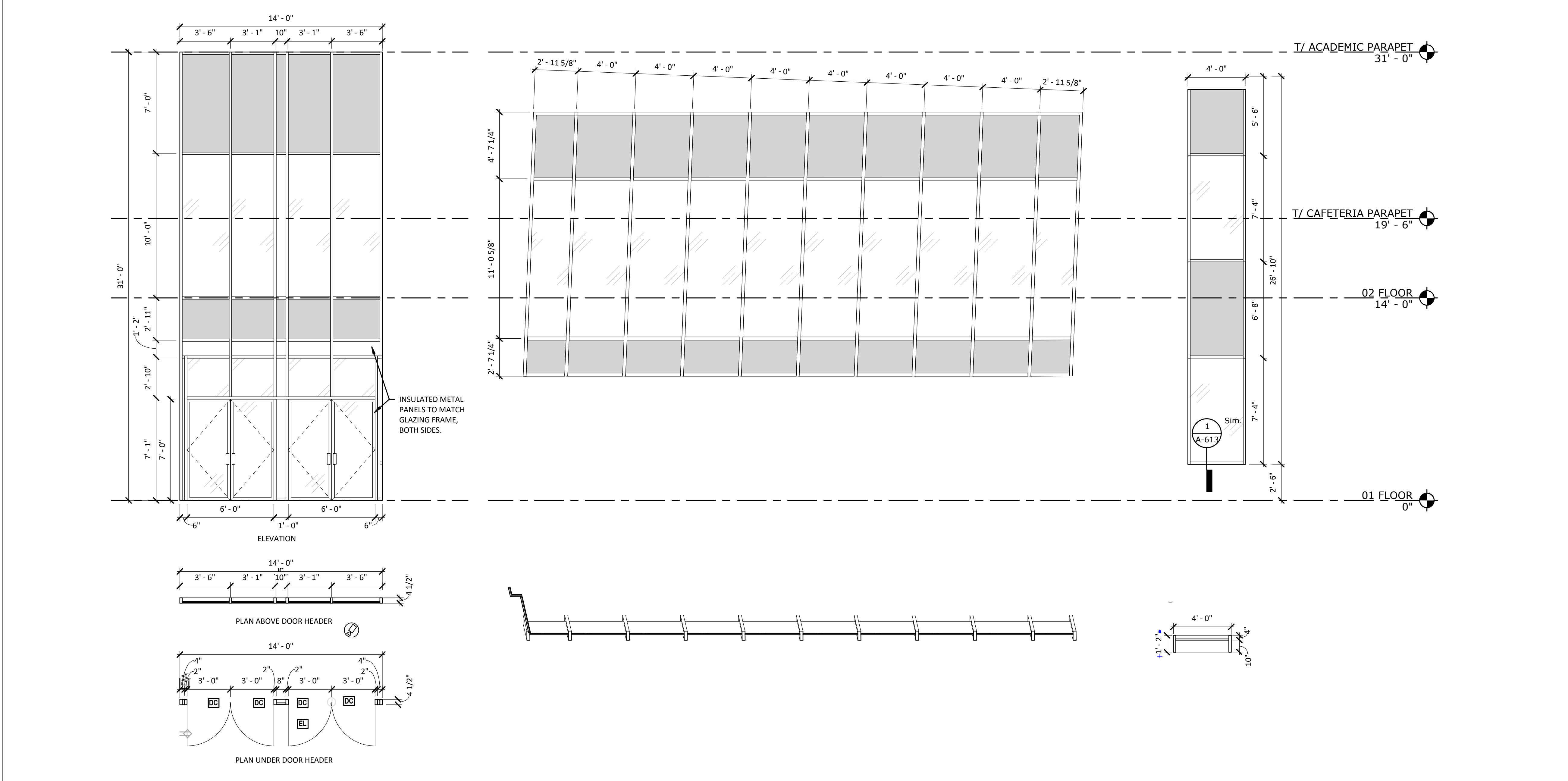
DOOR AND FRAME SCHEDULE																
NUMBER	ROOM NAME	DOOR PANEL TYPE	DOOR MATERIAL	NO. OF PANELS	DOOR PANEL			GLAZING	FRAME		RATING	HW SET	DETAILS			NOTES
					W	SIZE	TH		FRAME TYPE	FRAME MATERIAL			HEAD	JAMB	SILL	
100A	VESTIBULE	ST	AL	2	6'-0"	7'-0"	1 3/4"	1" INSUL.	-	AL	-	31				
100B	VESTIBULE	ST	AL	2	6'-0"	7'-0"	1 3/4"	1" INSUL.	-	AL	-	18				
100C	VESTIBULE	ST	AL	2	6'-0"	7'-0"	1 3/4"	1/4" TEMP.	-	AL	-	17				
100D	VESTIBULE	ST	AL	2	6'-0"	7'-0"	1 3/4"	1/4" TEMP.	-	AL	-	47				
102	CORRIDOR	N	WD	2	6'-0"	7'-0"	1 3/4"	1/4" TEMP.	1	MTL	-	41	9/A-601	8/A-601	7/A-601	
103	PE STORAGE	F	WD	2	6'-0"	7'-0"	1 3/4"	-	1	MTL	-	28	9/A-601	8/A-601	7/A-601	
104	PE OFFICE	F	WD	2	3'-0"	7'-0"	1 3/4"	-	6	MTL	-	32	6/A-601	5/A-601	4/A-601	
105A1	GYMNASIUM	F	HM	1	3'-0"	7'-0"	1 3/4"	-	2	MTL	-	42				
105A2	GYMNASIUM	N	WD	2	6'-0"	7'-0"	1 3/4"	1/4" TEMP.	3	MTL	-	23	6/A-601	5/A-601	4/A-601	
105A3	GYMNASIUM	N	WD	2	6'-0"	7'-0"	1 3/4"	1/4" TEMP.	3	MTL	-	23	6/A-601	5/A-601	4/A-601	
105C1	STAGE STORAGE/AV	F	WD	2	6'-0"	7'-0"	1 3/4"	-	1	MTL	-	45	9/A-601	8/A-601	7/A-601	
105C2	STAGE STORAGE/AV	F	WD	2	6'-0"	7'-0"	1 3/4"	-	1	MTL	-	45	9/A-601	8/A-601	7/A-601	
106	MAIN MECH	F	HM	2	6'-0"	7'-0"	1 3/4"	-	3	MTL	-	02				
107A	MAIN ELEC	F	HM	1	3'-0"	7'-0"	1 3/4"	-	2	MTL	-	42				
107B	MAIN ELEC	F	HM	1	3'-0"	7'-0"	1 3/4"	-	2	MTL	-	29	6/A-601	5/A-601	4/A-601	
108A	MAINTENANCE OFFICE	N	WD	1	6'-0"	7'-0"	1 3/4"	1/4" TEMP.	2	MTL	-	30	6/A-601	5/A-601	4/A-601	
108B	MAINTENANCE OFFICE	F	WD	1	3'-0"	7'-0"	1 3/4"	-	2	MTL	-	33	6/A-601	5/A-601	4/A-601	
109A	OFFICE/STORAGE	N	WD	1	3'-0"	7'-0"	1 3/4"	1/4" TEMP.	2	MTL	-	03	6/A-601	5/A-601	4/A-601	
109B	OFFICE/STORAGE	N	WD	1	3'-0"	7'-0"	1 3/4"	1/4" TEMP.	2	MTL	-	04	6/A-601	5/A-601	4/A-601	
110	TLT	F	WD	1	3'-0"	7'-0"	1 3/4"	-	2	MTL	-	07	6/A-601	5/A-601	4/A-601	
111	CUST OFFICE	F	WD	1	3'-0"	7'-0"	1 3/4"	-	6	MTL	-	04	6/A-601	5/A-601	4/A-601	
112	RECEIVING	N	HM	2	6'-0"	7'-0"	1 3/4"	1" INSUL.	3	MTL	-	13				
112A	CIRCULATION	N	WD	2	6'-0"	7'-0"	1 3/4"	1/4" TEMP.	3	MTL	-	26	6/A-601	5/A-601	4/A-601	
113	SITE EQUIP STORAGE	F	HM	2	6'-0"	7'-0"	1 3/4"	-	3	MTL	-	02				
114A	KITCHEN	N	WD	1	3'-6"	7'-0"	1 3/4"	1/4" TEMP.	2	MTL	-	34	9/A-601	8/A-601	7/A-601	
114B	KITCHEN	N	WD	1	3'-6"	7'-0"	1 3/4"	1/4" TEMP.	2	MTL	-	35	9/A-601	8/A-601	7/A-601	
114C	KITCHEN	N	WD	1	3'-6"	7'-0"	1 3/4"	1/4" TEMP.	2	MTL	-	35	9/A-601	8/A-601	7/A-601	
115A	VESTIBULE	ST	AL	2	6'-0"	7'-0"	1 3/4"	1" INSUL.	-	AL	-	31				
115B	VESTIBULE	ST	AL	2	6'-0"	7'-0"	1 3/4"	1" INSUL.	-	AL	-	18				
115C	VESTIBULE	ST	AL	2	6'-0"	7'-0"	1 3/4"	1/4" TEMP.	-	AL	-	17				
115D	VESTIBULE	ST	AL	2	6'-0"	7'-0"	1 3/4"	1/4" TEMP.	-	AL	-	40				
116A	CAFE	ST	AL	2	6'-0"	7'-0"	1 3/4"	1" INSUL.	-	AL	-	43				
116B	CAFE	ST	AL	2	6'-0"	7'-0"	1 3/4"	1" INSUL.	-	AL	-	43				
116C	CAFE	ST	AL	2	6'-1 1/2"	6'-11 3/4"	1 3/4"	1" INSUL.	-	AL	-	19				
118	RESTROOM	F	WD	1	2'-0"	7'-0"	1 3/4"	-	1	MTL	-	14				
119	TABLE STORAGE	F	WD	2	6'-0"	7'-0"	1 3/4"	-	1	MTL	-	45	3/A-601	2/A-601	1/A-601	
120	MDF	F	WD	1	3'-0"	7'-0"	1 3/4"	-	1	MTL	-	12	3/A-601	2/A-601	1/A-601	
121	ELEC	F	WD	1	3'-0"	7'-0"	1 3/4"	-	1	MTL	-	08	3/A-601	2/A-601	1/A-601	
123	ELEVATOR CONTROLLER	F	WD	1	3'-0"	7'-0"	1 3/4"	-	1	MTL	-	09				
123A	VESTIBULE	ST	AL	2	5'-11 1/2"	6'-11 3/4"	1 3/4"	1" INSUL.	-	AL	-	19				
123B	VESTIBULE	ST	AL	2	5'-11 1/2"	6'-11 3/4"	1 3/4"	1/4" TEMP.	-	AL	-	01				
124A	ACADEMIC CORRIDOR	N	WD	2	6'-0"	7'-0"	1 3/4"	1/4" TEMP.	1	MTL	B-Label 90 Min.	27	9/A-601	8/A-601	7/A-601	
124B	ACADEMIC CORRIDOR	N	WD	2	6'-0"	7'-0"	1 3/4"	1/4" TEMP.	1	MTL	B-Label 90 Min.	27	9/A-601	8/A-601	7/A-601	
125	SG	F	WD	1	3'-0"	7'-0"	1 3/4"	-	4	MTL	-	32	9/A-601	8/A-601	7/A-601	
126	OFFICE	F	WD	1	3'-0"	7'-0"	1 3/4"	-	4	MTL	-	32	9/A-601	8/A-601	7/A-601	
127	OFFICE	F	WD	1	3'-0"	7'-0"	1 3/4"	-	4	MTL	-	32	9/A-601	8/A-601	7/A-601	
128	OFFICE	F	WD	1	3'-0"	7'-0"	1 3/4"	-	4	MTL	-	32	9/A-601	8/A-601	7/A-601	
129	NURSE TLT	F	WD	1	3'-0"	7'-0"	1 3/4"	-	1	MTL	-	25	9/A-601	8/A-601	7/A-601	
130	CC	F	WD	1	3'-0"	7'-0"	1 3/4"	-	1	MTL	-	36	9/A-601	8/A-601	7/A-601	
131	ELEC	F	WD	1	3'-0"	7'-0"	1 3/4"	-	1	MTL	-	36	9/A-601	8/A-601	7/A-601	
132	IDF	F	WD	1	3'-0"	7'-0"	1 3/4"	-	1	MTL	-	12	9/A-601	8/A-601	7/A-601	
133	OT/PT	N	WD	1	3'-0"	7'-0"	1 3/4"	1/4" TEMP.	4	MTL	-	37	9/A-601	8/A-601	7/A-601	
134	RESTROOM	F	WD	1	2'-0"	7'-0"	1 3/4"	-	1	MTL	-	14				
136A	FLEX	F	WD	1	3'-0"	7'-0"	1 3/4"	-	5	MTL	-	11	9/A-601	8/A-601	7/A-601	
136B	FLEX	F	WD	1	3'-0"	7'-0"	1 3/4"	-	5	MTL	-	11	9/A-601	8/A-601	7/A-601	
137A	FLEX	F	WD	1	3'-0"	7'-0"	1 3/4"	-	5	MTL	-	11	9/A-601	8/A-601	7/A-601	
137B	FLEX	F	WD	1	3'-0"	7'-0"	1 3/4"	-	5	MTL	-	11	9/A-601	8/A-601	7/A-601	
138	CLASSROOM	F	WD	1	3'-0"	7'-0"	1 3/4"	-	5	MTL	-	11	9/A-601	8/A-601	7/A-601	
139	CLASSROOM	F	WD	1	3'-0"	7'-0"	1 3/4"	-	5	MTL	-	11	9/A-601	8/A-601	7/A-601	
140	CLASSROOM	F	WD	1	3'-0"	7'-0"	1 3/4"	-	5	MTL	-	11	9/A-601	8/A-601	7/A-601	
141	ACADEMIC CORRIDOR	ST	AL	2	5'-11 1/2"	6'-11 3/4"	1 3/4"	1" INSUL.	-	AL	-	19				
142	CLASSROOM	F	WD	1	3'-0"	7'-0"	1 3/4"	-	5	MTL	-	11	9/A-601	8/A-601	7/A-601	
143	CLASSROOM	F	WD	1	3'-0"	7'-0"	1 3/4"	-	5	MTL	-	11	9/A-601	8/A-601	7/A-601	
144	CLASSROOM	F	WD	1	3'-0"	7'-0"	1 3/4"	-	5	MTL	-	11	9/A-601	8/A-601	7/A-601	
145	CLASSROOM	F	WD	1	3'-0"	7'-0"	1 3/4"	-	5	MTL	-	11	9/A-601	8/A-601	7/A-601	
146A	SENSORY CORRIDOR	F	WD	1	3'-0"	7'-0"	1 3/4"	-	5	MTL	-	11	9/A-601	8/A-601	7/A-601	
147	TOILET	F	WD	1	3'-0"	7'-0"	1 3/4"	-	1	MTL	-	07	9/A-601	8/A-601	7/A-601	
148	RESOURCE ROOM	F	WD	1	3'-0"	7'-0"	1 3/4"	-	4	MTL	-	11	9/A-601	8/A-601	7/A-601	
149	SENSORY	F	WD	1	3'-0"	7'-0"	1 3/4"	-	4	MTL	-	09	9/A-601	8/A-601	7/A-601	
150	CLASSROOM	F	WD	1	3'-0"	7'-0"	1 3/4"	-	5	MTL	-	11	9/A-601	8/A-601	7/A-601	
151	CLASSROOM	F	WD	1	3'-0"	7'-0"	1 3/4"	-	5	MTL	-	11	9/A-601	8/A-601	7/A-601	
152A	ART	F	WD	1	3'-0"	7'-0"	1 3/4"	-	5	MTL	-	15	9/A-601	8/A-601	7/A-601	
152B	ART	F	WD	1	3'-0"	7'-0"	1 3/4"	-	5	MTL	-	15	9/A-601	8/A-601	7/A-601	
153	KLIN	N	WD	1	3'-0"	7'-0"	1 3/4"	1/4" TEMP.	1	MTL	-	11	9/A-601	8/A-601	7/A-601	
154	STORAGE	F	WD	1	3'-0"	7'-0"	1 3/4"	-	1	MTL	-	22	9/A-601	8/A-601	7/A-601	
156	NURSE	N	WD	1	3'-0"	7'-0"	1 3/4"	1/4" TEMP.	1	MTL	-	05	9/A-601	8/A-601	7/A-601	
157	AP	N	WD	1	3'-0"	7'-0"	1 3/4"	1/4" TEMP.	1	MTL	-	04	9/A-601	8/A-601	7/A-601	
158A	MEETING	N	WD	1	3'-0"	7'-0"	1 3/4"	1/4" TEMP.	1	MTL	-	38	9/A-601	8/A-601	7/A-601	
158B	MEETING	N	WD	1	3'-0"	7'-0"	1 3/4"	1/4" TEMP.	1	MTL	-	03	9/A-601	8/A-601	7/A-601	
159	PRINCIPAL	N	WD	1	3'-0"	7'-0"	1 3/4"	1/4" TEMP.	1	MTL	-	04	9/A-601	8/A-601	7/A-601	
160	ADMIN CORRIDOR	N	WD	1	3'-0"	7'-0"	1 3/4"	1/4" TEMP.	1	MTL	-	04	9/A-601	8/A-601	7/A-601	
161	ADMIN CORRIDOR	N	WD	1	3'-0"	7'-0"	1 3/4"	1/4" TEMP.	1	MTL	-	46	9/A-601	8/A-601	7/A-601	
162A	CONFERENCE	N	WD	1	3'-0"	7'-0"	1 3/4"	1/4" TEMP.	1	MTL	-	32	9/A-601	8/A-601	7/A-601	
162B	CONFERENCE	N	WD	1	3'-0"	7'-0"	1 3/4"	1/4" TEMP.	1	MTL	-	04	9/A-601	8/A-601	7/A-601	
163	TOILET	F	WD	1	3'-0"	7'-0"	1 3/4"	-	1	MTL	-	07	9/A-601	8/A-601	7/A-601	
164	TOILET	F	WD	1	3'-0"	7'-0"	1 3/4"	-	1	MTL	-	07	9/A-601	8/A-601	7/A-601	
165A	WORKROOM / MAIL ROOM	N	WD	1	3'-0"	7'-0"	1 3/4"	1/4" TEMP.	1	MTL	-	39	9/A-601	8/A-601	7/A-601	
165B	WORKROOM / MAIL ROOM	N	WD	1	3'-0"	7'-0"	1 3/4"	1/4" TEMP.	1	MTL	-	03	9/A-601	8/A-601	7/A-601	
166	PARENT	N	WD	1	3'-0"	7'-0"	1 3/4"	1/4" TEMP.	1	MTL	-	24	9/A-601	8/A-601	7/A-601	
167A	RECEPTION	ST	AL	1	3'-0"	7'-0"	1 3/4"	-	1	AL	-	10				
167B	RECEPTION	N	WD	1	3'-0"	7'-0"	1 3/4"	1/4" TEMP.	1	MTL	-	48	9/A-601	8/A-601	7/A-601	
202A	MECH	F	WD	1	3'-0"	7'-0"	1 3/4"	-	1	MTL	-	22	9/A-601	8/A-601	7/A-601	
202B	MECH	F	WD	2	6'-0"	7'-0"	1 3/4"	-	1	MTL	-	16	3/A-601	2/A-601	1/A-601	
205A	ACADEMIC CORRIDOR	N	WD	2	6'-0"	7'-0"	1 3/4"	1/4" TEMP.	1	MTL	B-Label 90 Min.	27	9/A-601	8/A-601	7/A-601	



10 EXTERIOR ELEVATION EAST- AREA A
A-612 1/4" = 1'-0"

8 EXTERIOR ELEVATION SOUTH - AREA B
A-612 1/4" = 1'-0"

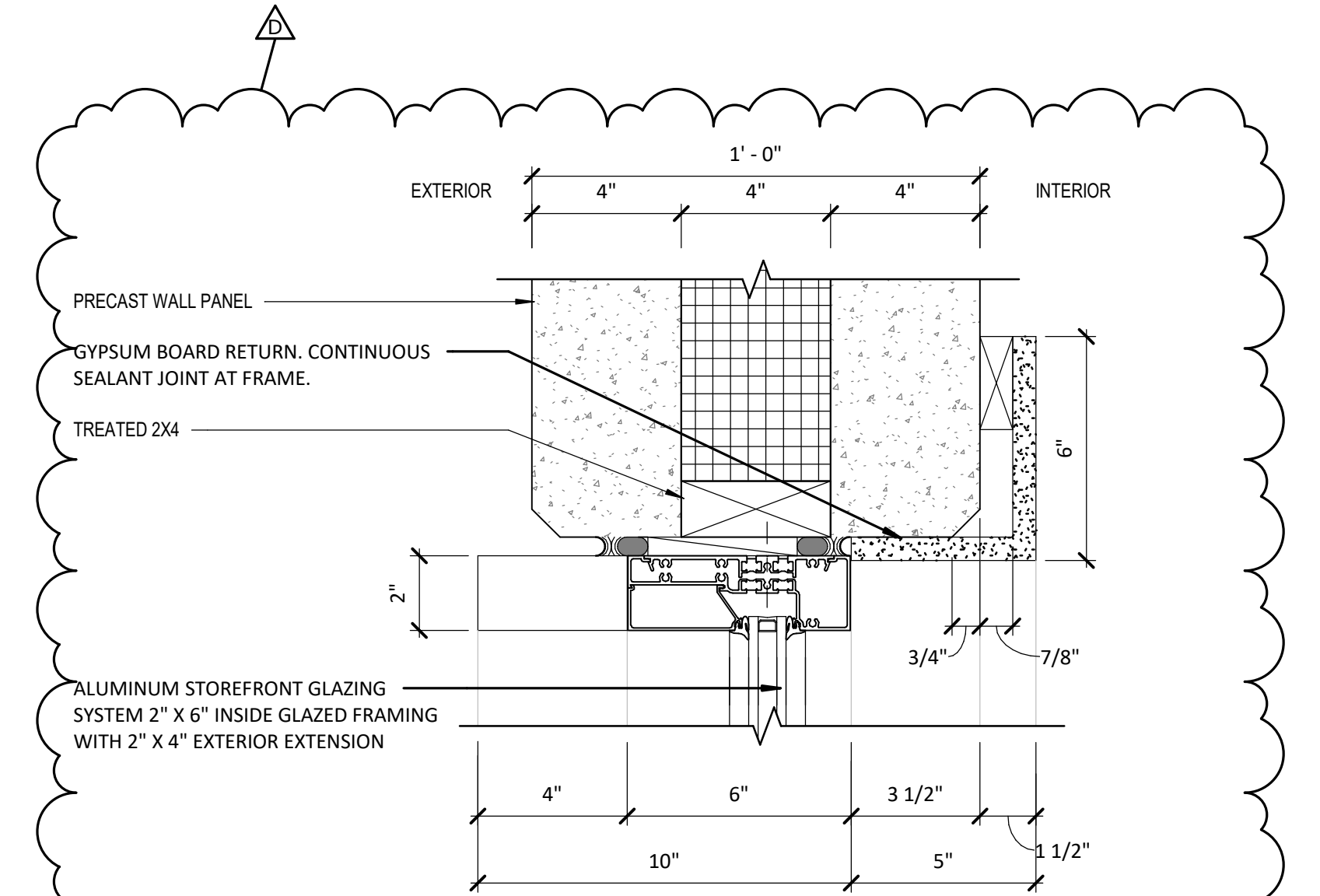
6 EXTERIOR ELEVATION SOUTH - AREA B
A-612 1/4" = 1'-0"



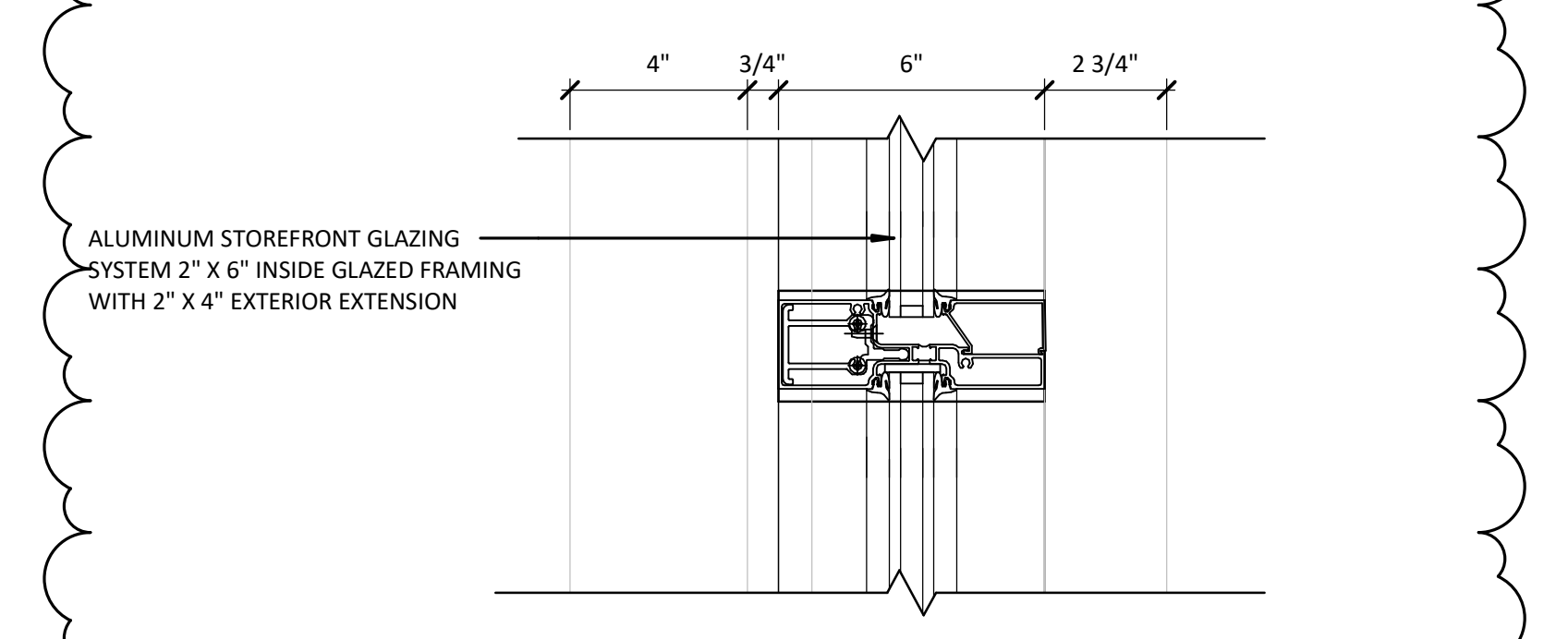
9 EXTERIOR ELEVATION NORTH- AREA A
A-612 1/4" = 1'-0"

7 EXTERIOR ELEVATION NORTH - AREA A
A-612 1/4" = 1'-0"

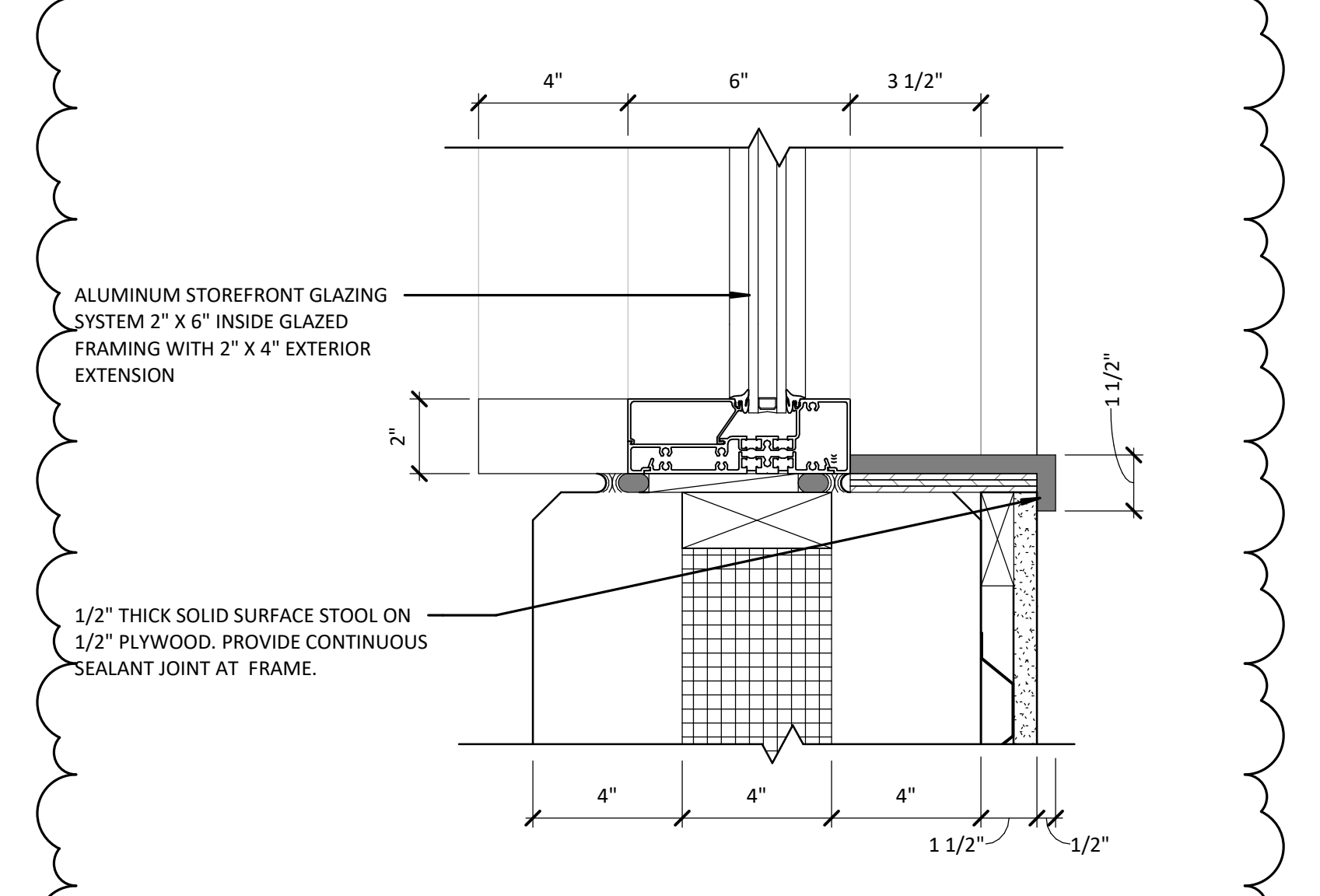
5 EXTERIOR ELEVATION EAST - AREA B
A-612 1/4" = 1'-0"



4 STOREFRONT HEAD/JAMB DETAIL
A-612 3" = 1'-0"

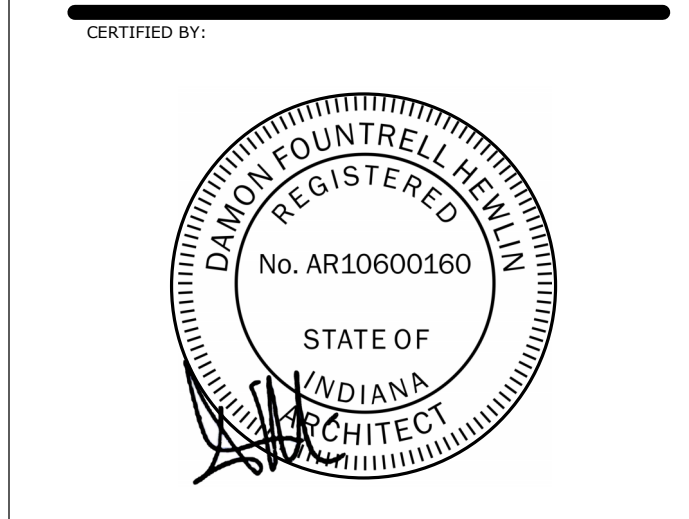


3 STOREFRONT INTERMEDIATE DETAIL
A-612 3" = 1'-0"



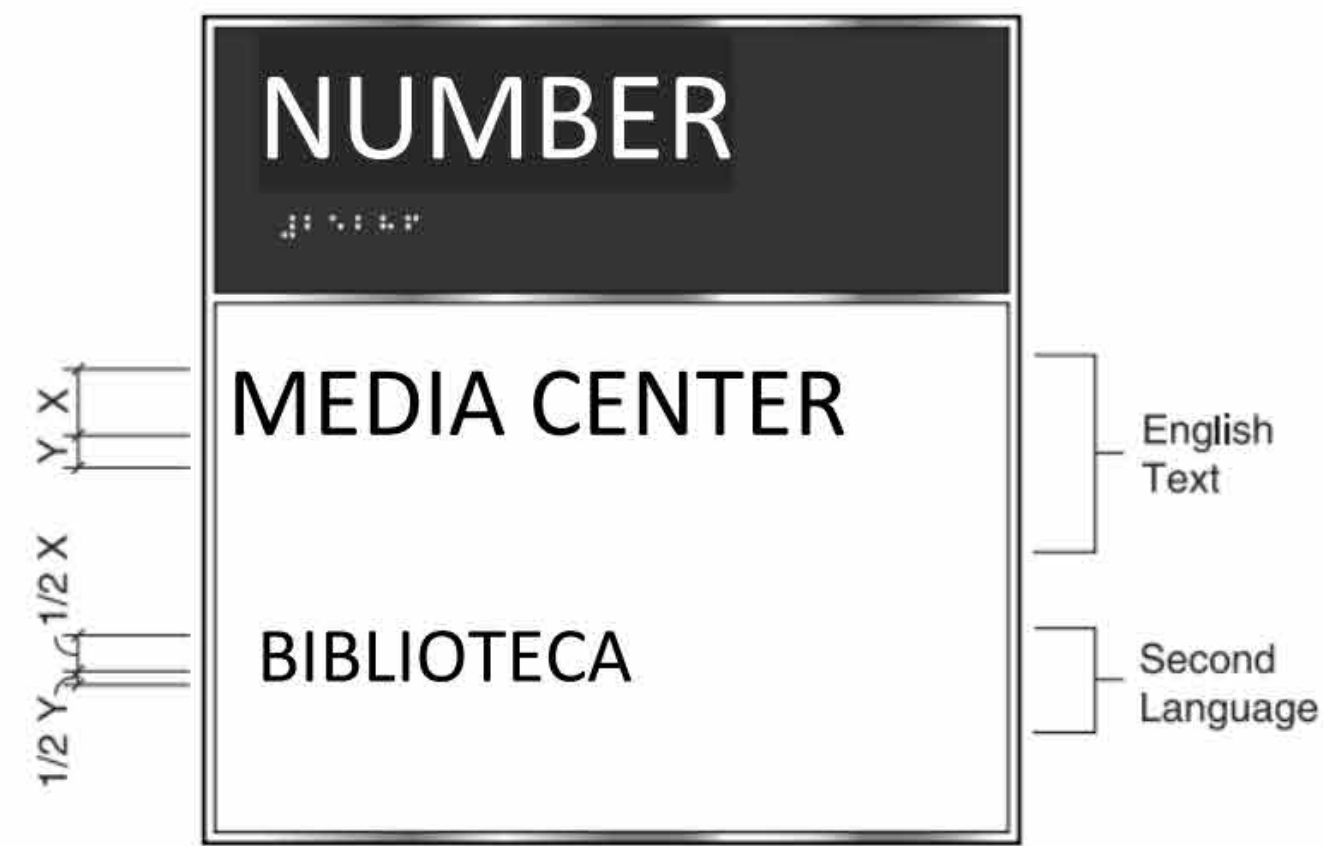
2 STOREFRONT SILL DETAIL
A-612 3" = 1'-0"

No.	Description	Date
	95% CD SET	12-18-24
	100% CD SET	01-17-25
D	ADD #4	03-03-25

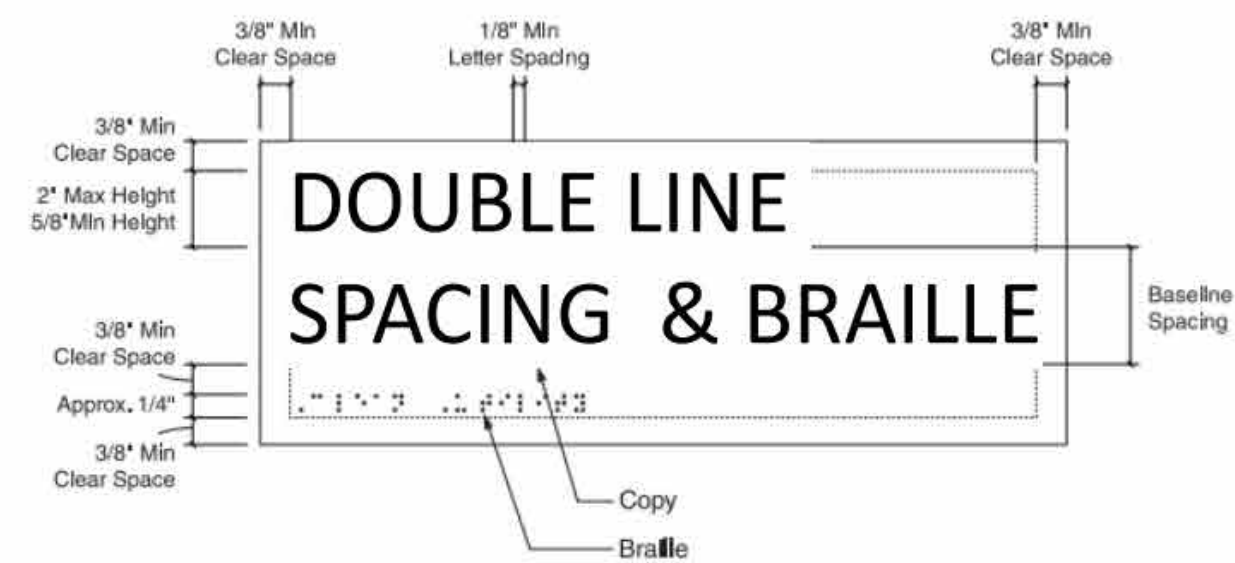


ISSUE DATE:	01/17/2025
DRAWN:	Autor
CHECKED:	Checker
PROJECT NO.:	P23-0116
REVISION NO.:	D

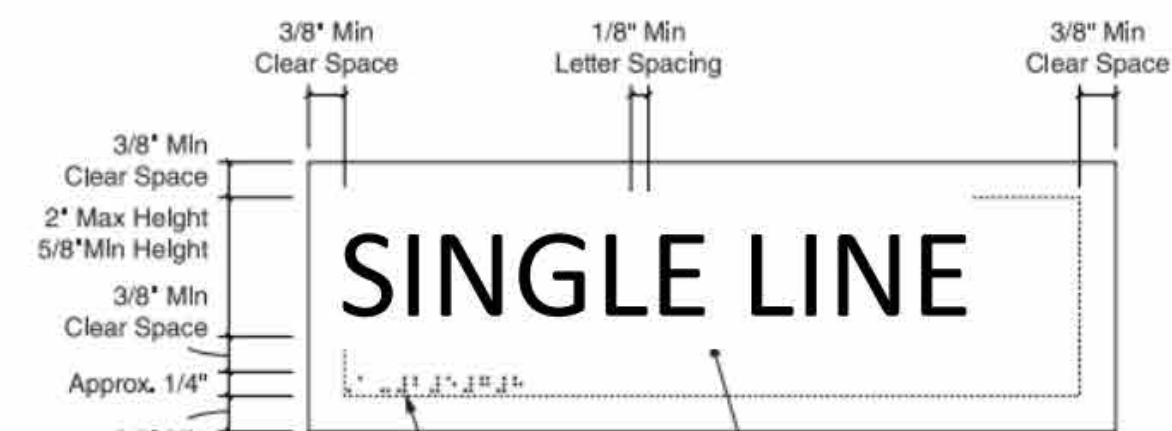
STOREFRONT ELEVATIONS



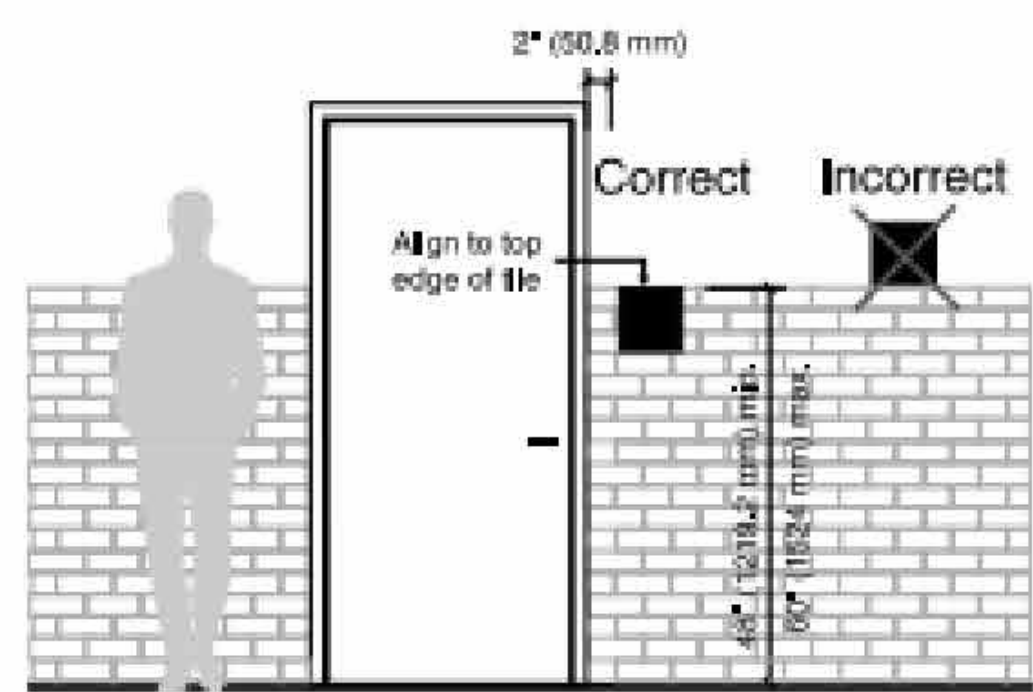
SIGN TYPE: NUMBER/NAME -BILINGUAL
 COLORS: BY OWNER
 SIZE: 8" W X 8" L
 INSTALLATION: STANDARD WALL MOUNT



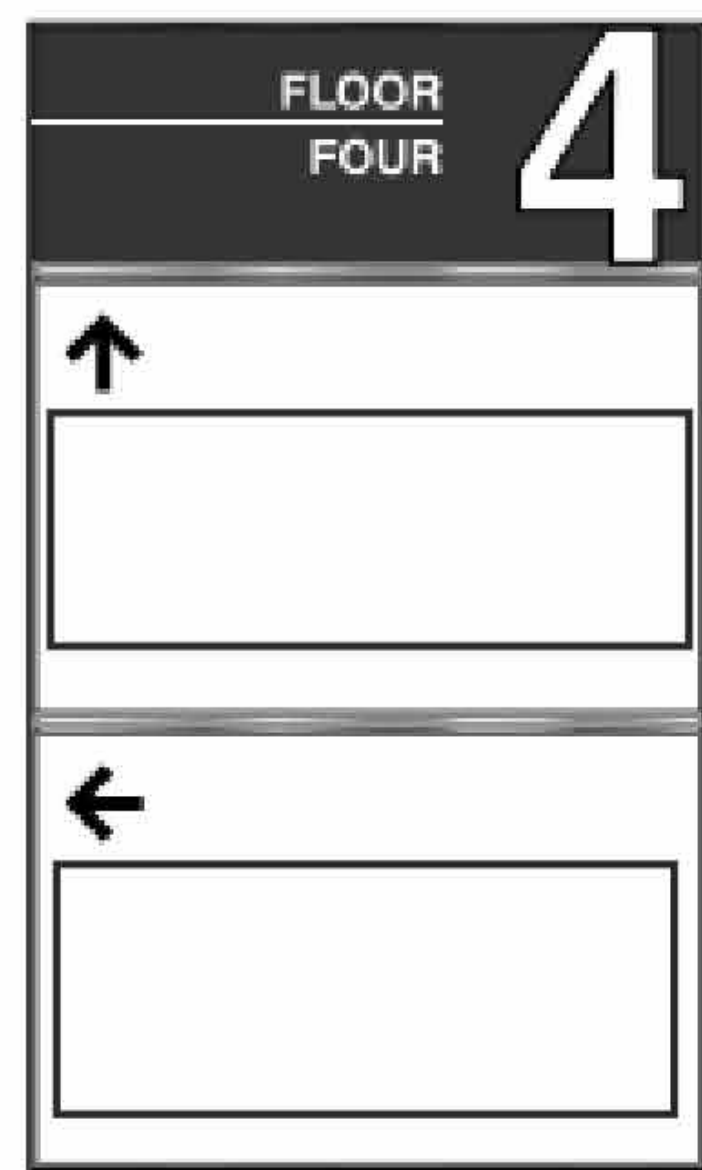
STANDARD DOUBLE LINE SIGNAGE DIMENSIONS



SIGN TYPE: ALUMINUM SIGN PLAQUE WITH RAISED BLOCK LETTERING (HIDDEN MOUNT BOLTS)
 COLORS: BY OWNER
 SIZE: 24" W X 18" H
 INFORMATION LINES: AS DIRECTED BY OWNER/ARCHITECT/DESIGNER



INSTALLATION: STANDARD WALL ALIGNMENTS



SIGN TYPE: DIRECTIONAL W/ ARROWS AND INSERTS
 COLORS: BY OWNER
 SIZE: 12" X 24"
 INSERTS: AS DIRECTED BY OWNER



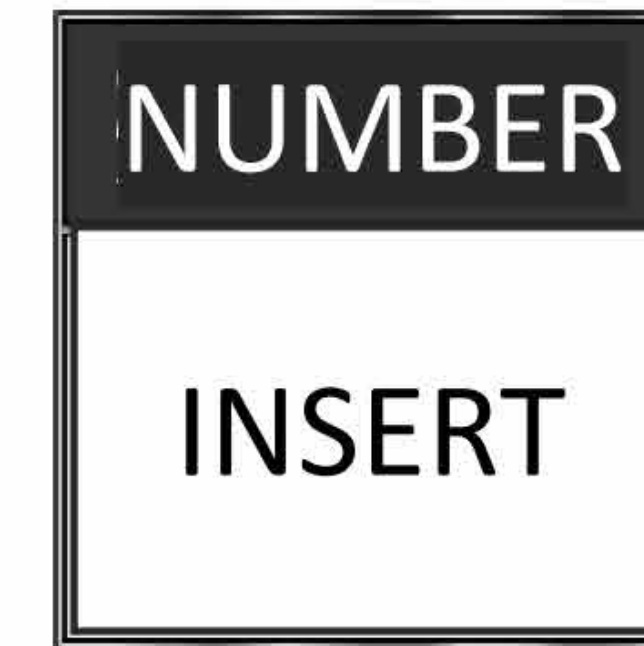
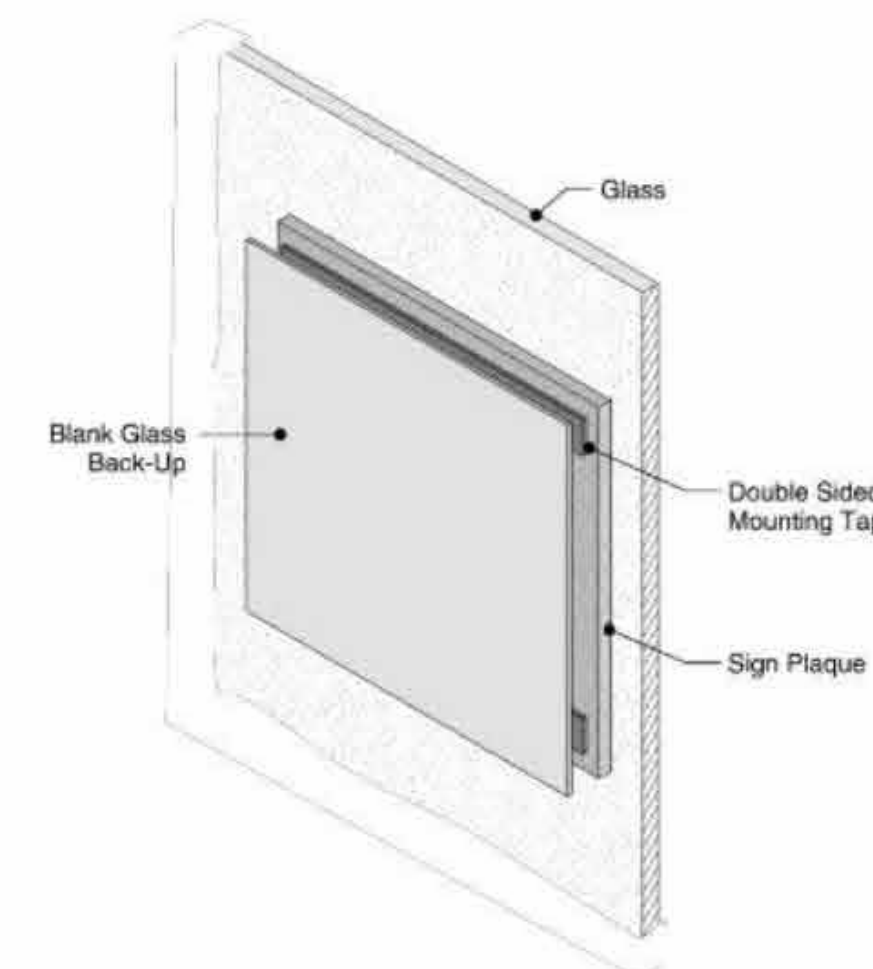
SIGN TYPE: OVERHEAD SIGN
 COLORS: BY OWNER
 SIZE: 12" X 48" ON CABLE WIRE TO SUITE WEIGHT OF SIGN, HARWARE INCLUDED.



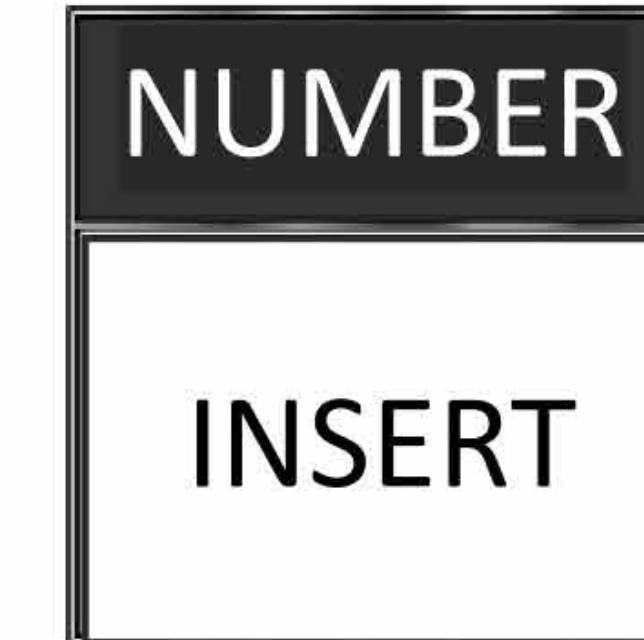
ELEVATOR SIGNAGE: REFERENCE SPECIFICATIONS



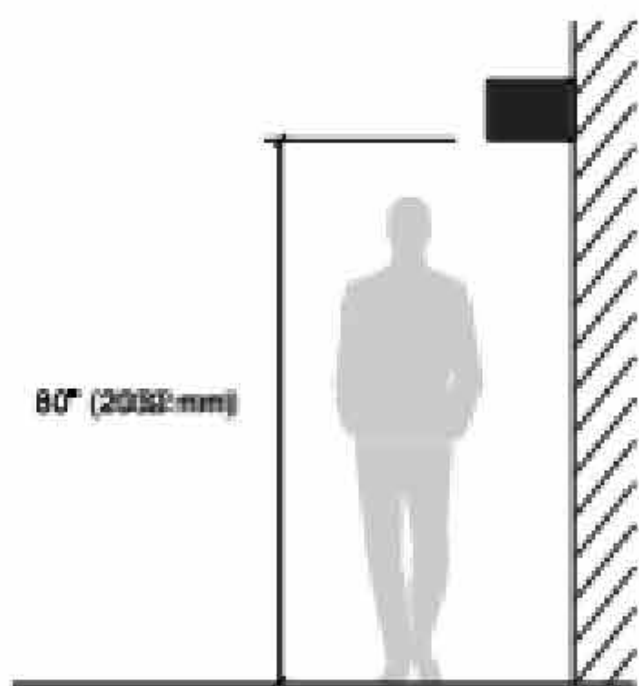
SIGN TYPE: FLAG "AED" SIGN
 COLORS: BY OWNER
 SIZE: 6" X 6"
 INSTALLATION: FLAG WALL MOUNT



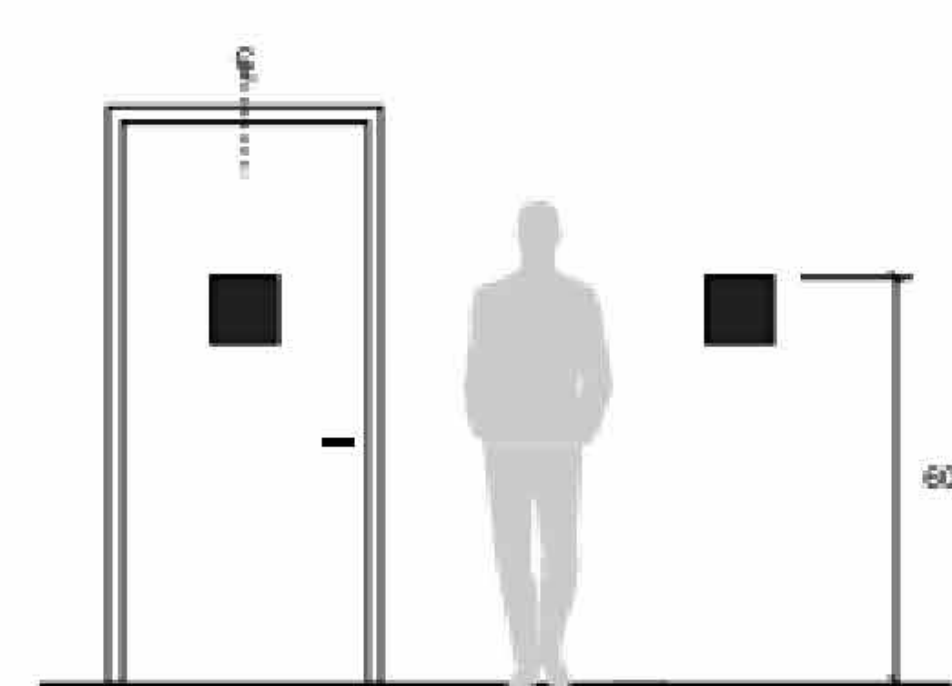
SIGN TYPE: NUMBER/INSERT SLIDE
 COLORS: BY OWNER
 SIZE: 8" W X 8" L
 INSTALLATION: STANDARD WALL MOUNT



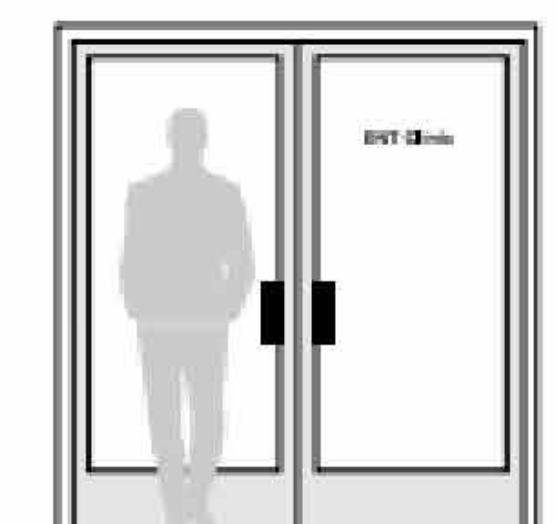
SIGN TYPE: NUMBER/INSERT SLIDE WITH GLASS BACKER
 COLORS: BY OWNER
 SIZE: 8" W X 8" L
 INSTALLATION: STANDARD GLASS MOUNT



STANDARD WALL FLAG MOUNT



STANDARD WALL AND VINYL MOUNT



STANDARD GLASS AND VINYL ON GLASS MOUNT



SIGN TYPE: RESTROOM GENDER SYMBOL WITH HANDICAP SYMBOL
 COLORS: BY OWNER
 SIZE: 8" W X 8" L
 INSTALLATION: STANDARD WALL MOUNT



SIGN TYPE: EXIT
 COLORS: BY OWNER
 SIZE: 6" W X 3" L
 INSTALLATION: DOOR PANEL



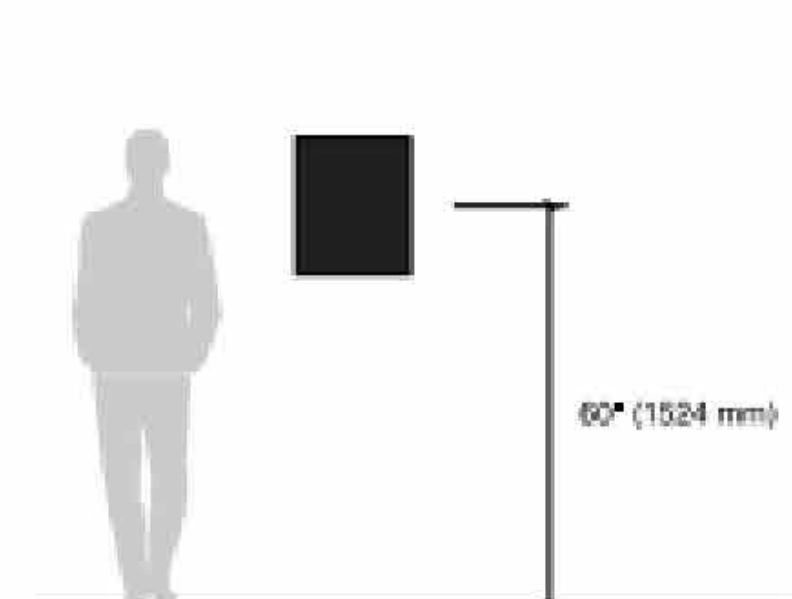
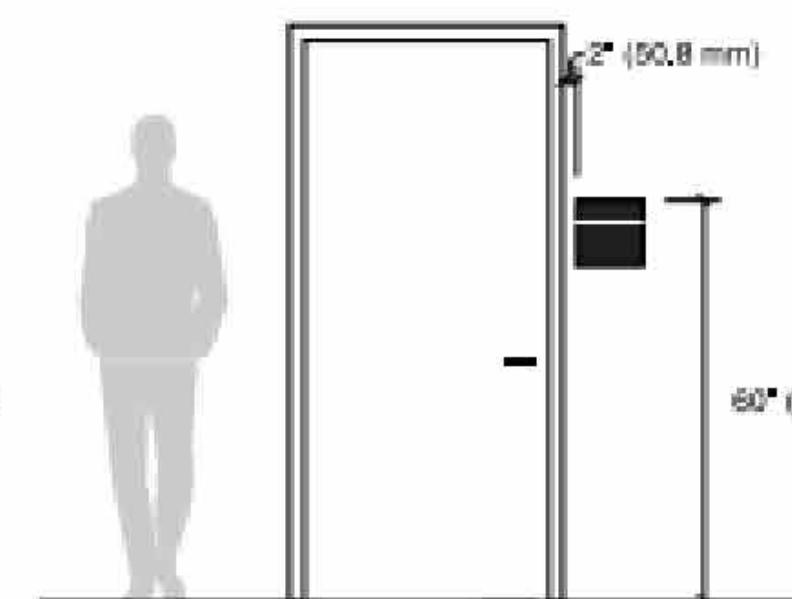
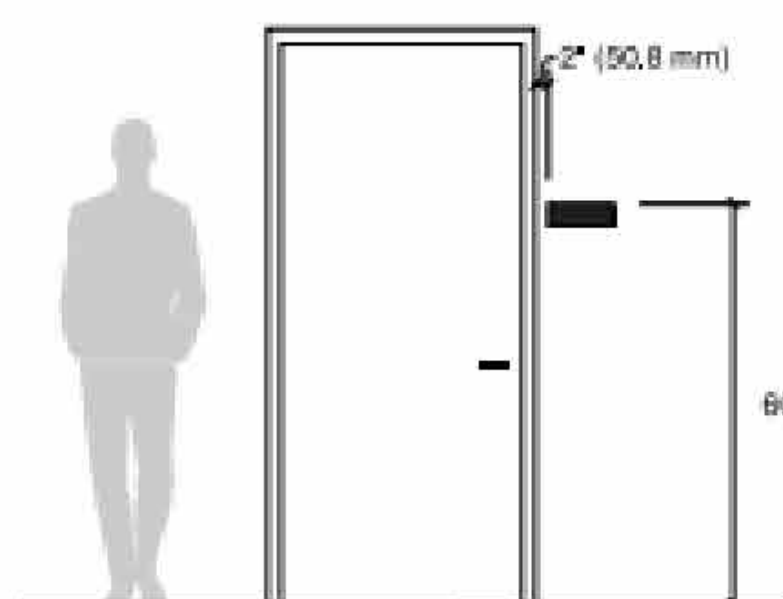
SIGN TYPE: NUMBER/INSERT SLIDE
 COLORS: BY OWNER
 SIZE: 8" X 8"
 INSTALLATION: STANDARD WALL FLAG MOUNT



SIGN TYPE: NUMBER/INSERT SLIDE
 COLORS: BY OWNER
 SIZE: 8" W X 12" L
 INSTALLATION: STANDARD WALL MOUNT



SIGN TYPE: NUMBER/INSERT WITH USE SLIDE
 COLORS: BY OWNER
 SIZE: 8" W X 8" L
 INSTALLATION: STANDARD WALL MOUNT



INSTALLATION: STANDARD WALL MOUNTS

GENERAL SIGNAGE NOTES

- ALL ITEMS AND MATERIAL SHOWN INDICATED OR REQUIRED FOR A COMPLETE PROJECT SHALL BE PROVIDED AND INSTALLED BY THE CONTRACTOR AND TO COMPLY WITH IPS STANDARDS COORDINATION (UNO).
- CONTRACTOR TO COORDINATE THE TEXT OF SIGN INSERTS WITH IPS/OWNER AND PROVIDE A ROOM SIGNAGE SCHEDULE WITH CONSTRUCTION SUBMITTALS FOR IPS TO GIVE FINAL APPROVAL OF ALL SIGNAGE TEXT, DESIGN, AND FINAL LOCATIONS. ALL SIGNAGE TO MEET IPS STANDARDS AND SELECTIONS, GUIDELINES AND ADA INSTALLATION HEIGHT REQUIREMENTS.
- ALL SIGNAGE SHALL BE CONTRACTOR FURNISHED AND INSTALLED ONCE APPROVED BY IPS.
- PERMANENT SIGNAGE FOR ROOM IDENTIFICATION SHALL INCLUDE RAISED LETTERING (BILINGUAL) AND BRAILLE AND MEET ADA GUIDELINES.
- IF WALL SPACE IS NOT AVAILABLE FOR SIGNAGE ON LATCH SIDE OF DOOR PER MOUNTING STANDARDS, SIGNS SHALL BE INSTALLED PER CURRENT ADA STANDARDS ON NEAREST ADJACENT WALL.
- ALL EXTERIOR DOORS SHALL HAVE LARGE OVER DOOR/SURFACE MOUNTED SIGNAGE FOR EMERGENCY PERSONNEL. COORDINATE DOOR NUMBER ACCORDING TO IPS DIRECTION AND APPROVAL.

ARCHITECTURAL PARTNER

PERKINS & WILL
 410 N. MICHIGAN AVE
 SUITE 1600
 CHICAGO, IL 60611
 v. (312) 755-0770

CIVIL & STRUCTURAL ENGINEER:

JOEL
 8840 ALLISON BLVD
 SUITE 425
 INDIANAPOLIS, IN 46250
 v. (317) 661-1964

MECH. / ELECT. / PLUMB. / FIRE PROT. ENGINEER:

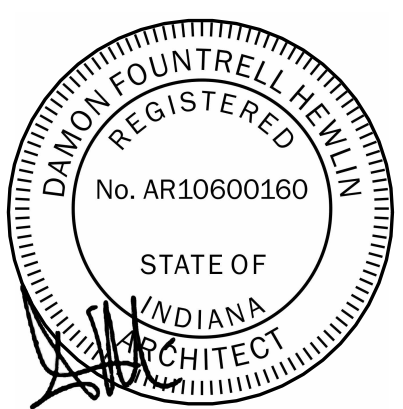
KBSO CONSULTING
 275 VETERANS WAY
 SUITE 300
 CARMEL, IN 46032
 v. (317) 344-8044

INTERIOR DESIGNER:

RELO DESIGN
 7222 N. Shadeland Ave.
 Suite 170
 Indianapolis, IN 46250
 P: (317) 202.0000

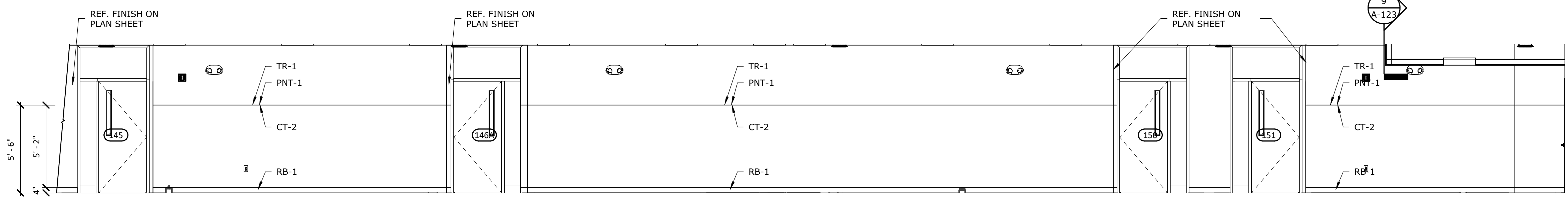
No.	Description	Date
	95% CD SET	12-18-24
	100% CD SET	01-17-25
D	ADD #4	03-03-25

CERTIFIED BY:



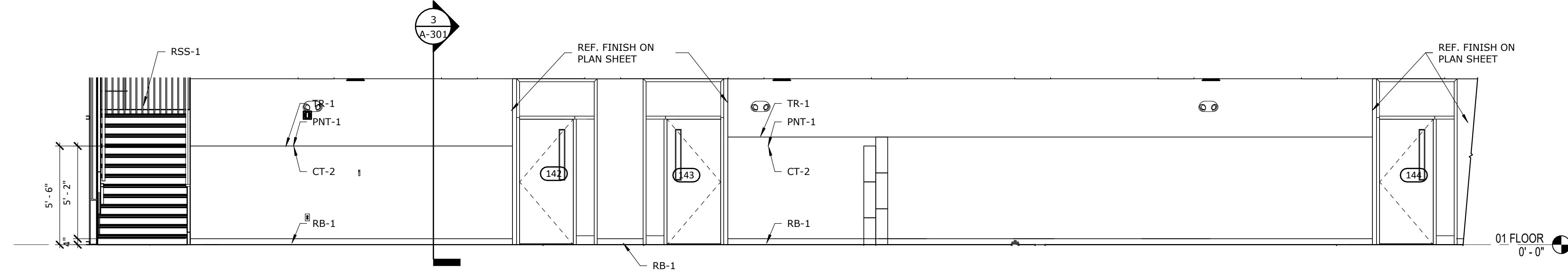
ISSUE DATE:	01/17/2025
DRAWN:	JAM
CHECKED:	RS/JW/JAM
PROJECT NO.:	P23-0116
REVISION NO.:	D

SIGNAGE GENERAL NOTES AND DETAILS



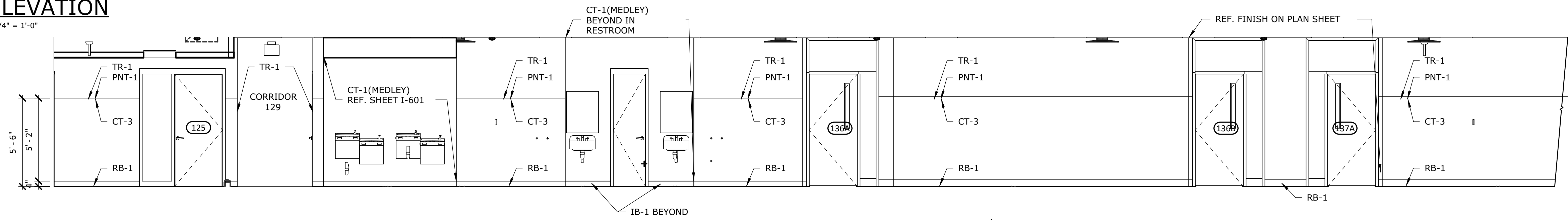
1 TYPICAL 1ST FLOOR CLASSROOM CORRIDOR 1ST FLOOR EAST INTERIOR ELEVATION

1-456 1/4" = 1'-0"



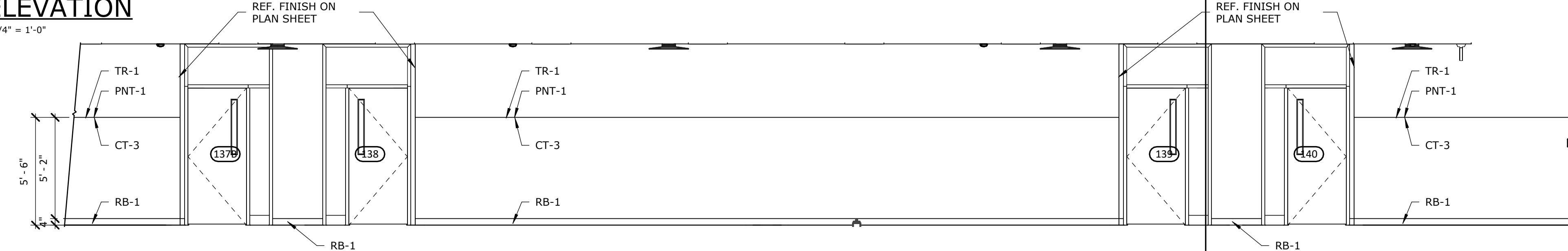
2 CONT. TYPICAL 1ST FLOOR CLASSROOM CORRIDOR EAST INTERIOR ELEVATION

1-456 1/4" = 1'-0"



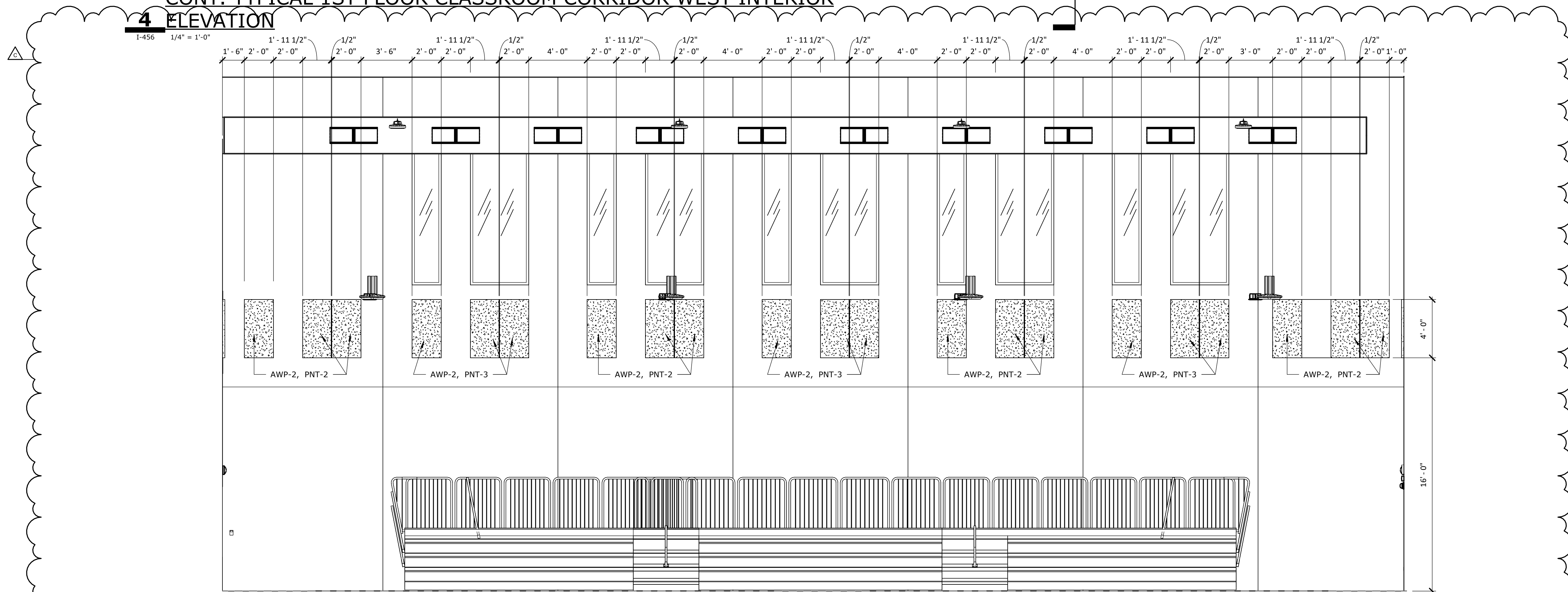
3 TYPICAL 1ST FLOOR CLASSROOM CORRIDOR WEST INTERIOR ELEVATION

1-456 1/4" = 1'-0"



4 CONT. TYPICAL 1ST FLOOR CLASSROOM CORRIDOR WEST INTERIOR ELEVATION

1-456 1/4" = 1'-0"

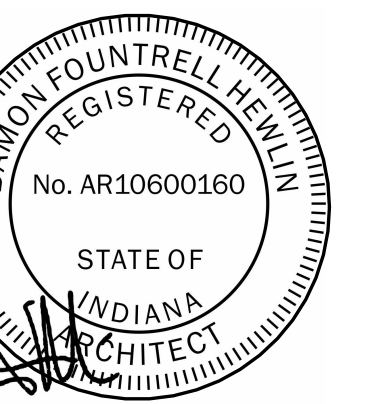


5 GYMNASIUM - NORTH INTERIOR ELEVATION

1-456 1/4" = 1'-0"

No.	Description	Date
	95% CD SET	12-18-24
	100% CD SET	01-17-25
C	ADD #3	02-24-25

CERTIFIED BY:



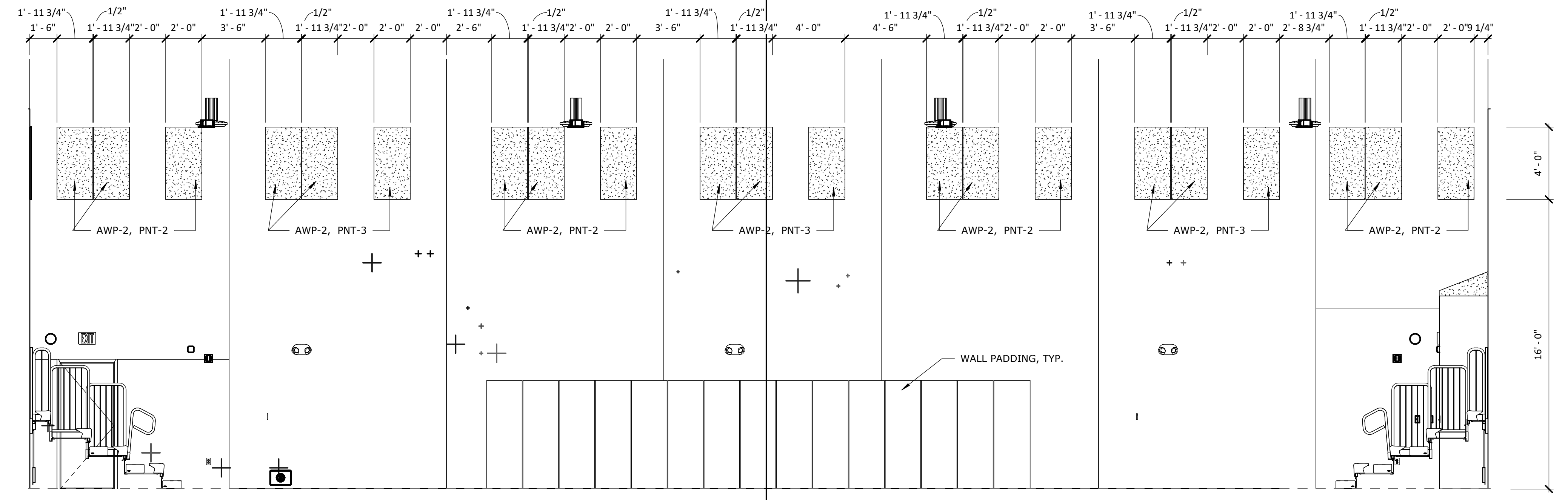
ISSUE DATE:	01/17/2025
DRAWN:	JAM
CHECKED:	RS/JW
PROJECT NO.:	P23-0116
REVISION NO.:	C

REVISIONS

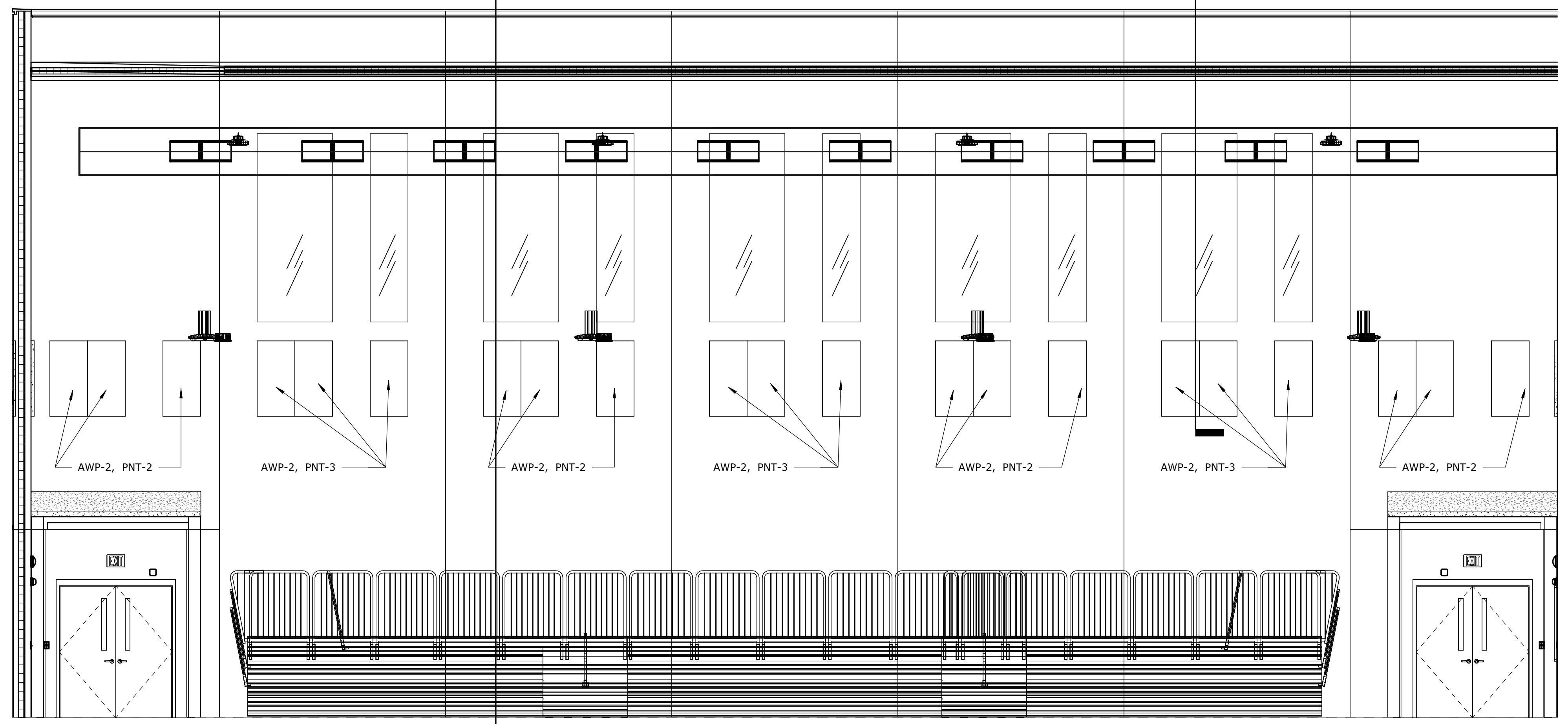
No.	Description	Date
95%	CD SET	12-18-24
100%	CD SET	01-17-25
C	ADD #3	02-24-25

CERTIFIED BY:

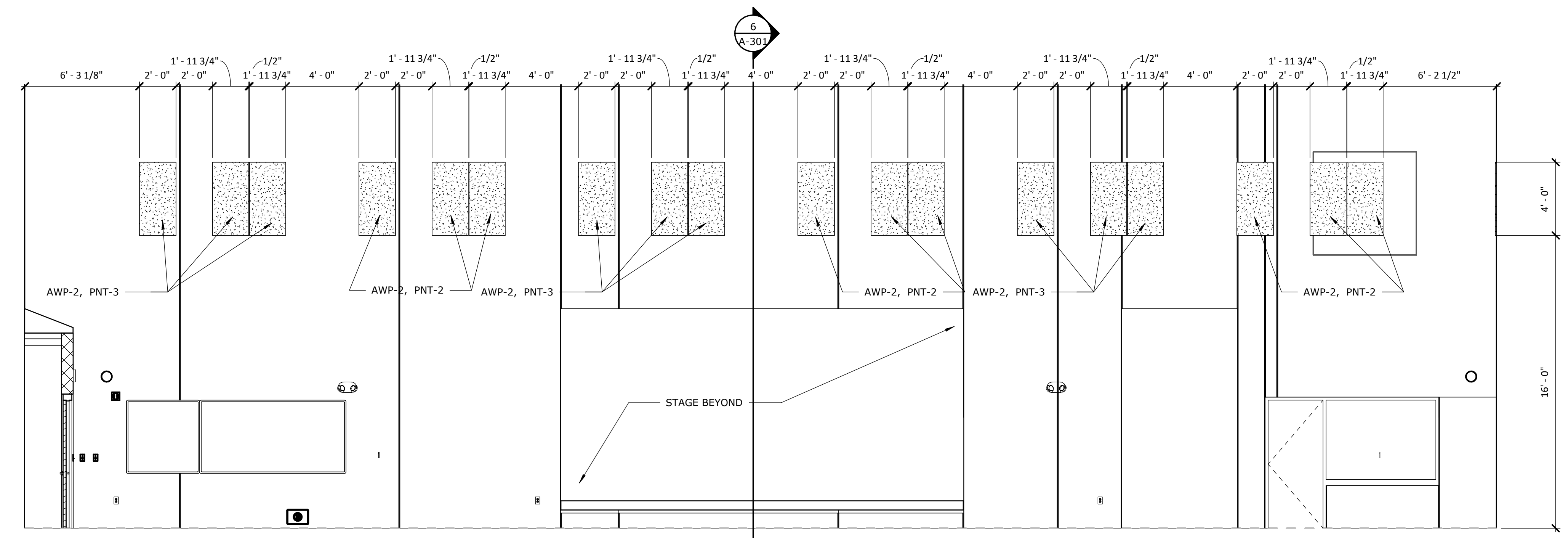
ISSUE DATE: 01/17/2025
 DRAWN: JAM
 CHECKED: RS/JW
 PROJECT NO.: P23-0116
 REVISION NO.: C



1 GYMNASIUM - EAST ELEVATION
 1-457 1/4" = 1'-0"



2 GYMNASIUM - SOUTH ELEVATION
 1-457 1/4" = 1'-0"



3 GYMNASIUM - WEST ELEVATION
 1-457 1/4" = 1'-0"