

**ADDENDUM
NO. 1**

March 20, 2025

**Westlane Middle School and Eastwood Middle School Bus Barn Demolition & Sitework
Westlane MS: 1301 W 73rd St, Indianapolis, IN 46260
Eastwood MS: 4401 E 62nd St, Indianapolis, IN 46220**

TO: ALL BIDDERS OF RECORD

This Addendum forms a part of and modifies the Bidding Requirements, Contract Forms, Contract Conditions, the Specifications and the Drawings dated February 27, 2025, by Schmidt Associates. Acknowledge receipt of the Addendum in the space provided on the Bid Form. Failure to do so may subject the Bidder to disqualification.

This Addendum consists of Pages ADD 1-1, and Schmidt Associates Addendum No. 1, dated March 19, 2025, consisting of one (1) Addendum page, and six (6) Addendum drawings.

A. SPECIFICATION SECTION 01 12 00 MULTIPLE CONTRACT SUMMARY

3.03 Categories

A. BID CATEGORY NO. 1 – SITE DEMOLITION AND EXTERIOR IMPROVEMENTS

Delete the following specification section:

Section 32 93 00 Plants

ADDENDUM NO. 1

MARCH 19, 2025

PREPARED BY SCHMIDT ASSOCIATES FOR:
EASTWOOD AND WESTLANE BUS BARN DEMOLITION
WASHINGTON TOWNSHIP, M.S.D. OF

This Addendum consists of 1 Addendum pages and 6 attachment pages totaling 7 pages.

Acknowledge receipt of this Addendum by inserting its number on the Bid Form. Failure to do so may subject the Bid to disqualification. This Addendum is part of the Contract Documents.

Bidder is encouraged to verify with reprographer of record all Addenda issued (do not rely exclusively on third party plan room services).

PART 1 - CHANGES TO PRIOR ADDENDA (NOT APPLICABLE)

PART 2 - CHANGES TO THE PROJECT MANUAL

Modifications described herein shall be incorporated in the Project Manual. All other Work shall remain unchanged.

2.1 DIVISION 32 - EXTERIOR IMPROVEMENTS

A. Section 329300 "PLANTS"

1. DELETE Section in its entirety.

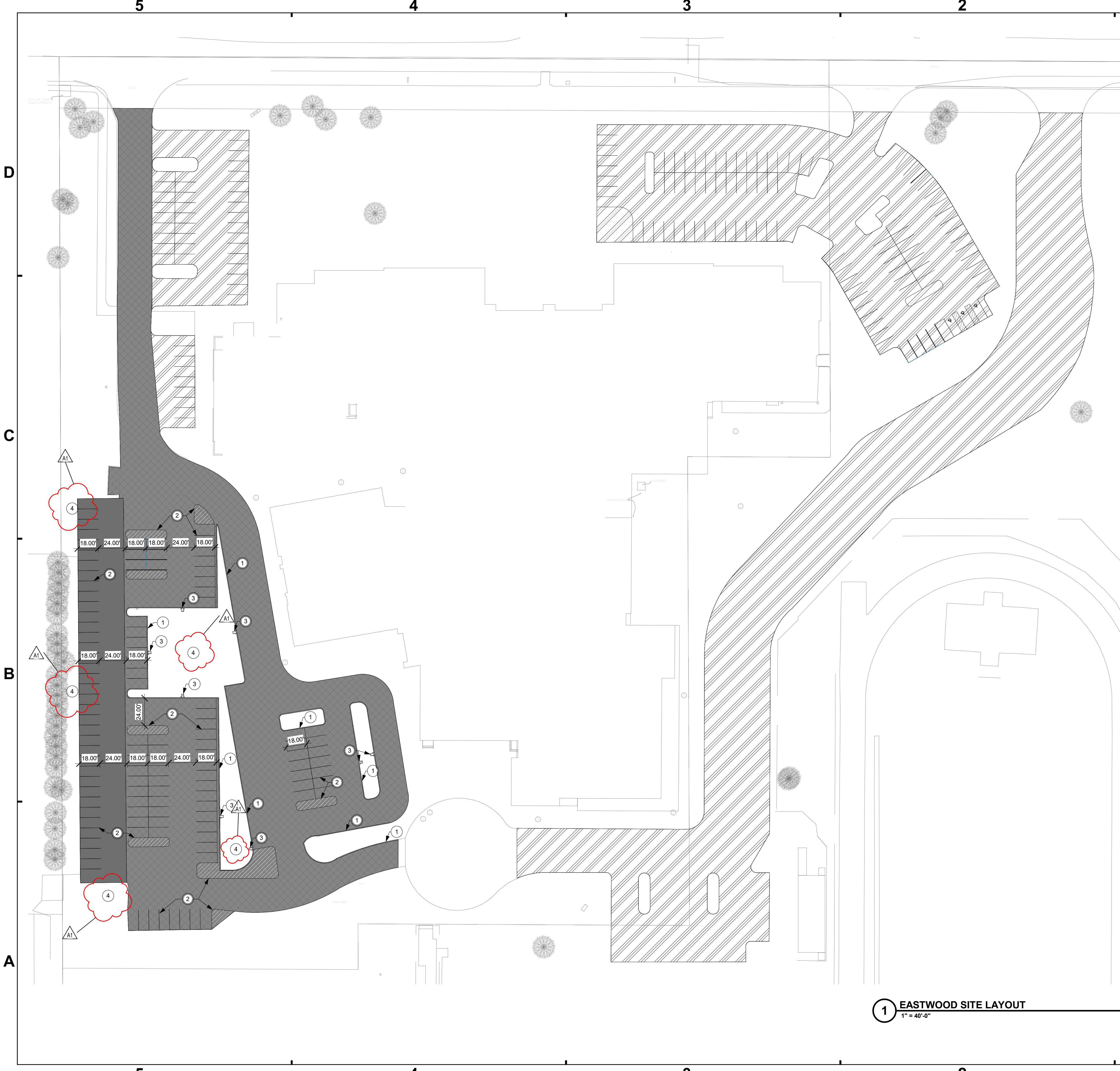
PART 3 - CHANGES TO THE DRAWINGS

Modifications described herein shall be incorporated in the Drawings. All other Work shall remain unchanged.

3.1 DRAWING SHEETS: ADDITIONS, DELETIONS AND REPLACEMENTS

DRAWING NO.	INDICATE ACTION: ADD (A), DELETE (D), DELETE & REPLACE (R),
C-SERIES DRAWINGS	
CL101.E	DELETE AND REPLACE
CL101.W	DELETE AND REPLACE
E-SERIES DRAWINGS	
ES101.W	DELETE AND REPLACE
ED101.W	DELETE AND REPLACE
E-101.W	DELETE AND REPLACE
E-601.W	DELETE AND REPLACE

END OF ADDENDUM 1



GENERAL LAYOUT NOTES

1. REFERENCE C-001 FOR GENERAL LAYOUT PLAN NOTES.
2. NORTHING AND EASTING COORDINATES ARE STATE PLANE COORDINATES BASED ON A TOPOGRAPHIC SURVEY. REFER TO SURVEY DRAWINGS FOR HORIZONTAL CONTROL POINT DATA.
3. ALL EXISTING PAVEMENT DAMAGED DURING CONSTRUCTION SHALL BE REPAIRED TO MATCH EXISTING CONDITIONS.

SITE LAYOUT LEGEND

	STANDARD ASPHALT PAVING, SEE DETAIL SHEET.
	1.5 MILL & OVERLAY, SEE SPECS.
	CRACK FILL, SEAL, & RESTRIPE EXISTING ASPHALT PAVEMENT, ALTERNATE.

SITE LAYOUT NOTES

#	NOTE
1	CONCRETE CURB. SEE DETAIL SHEET.
2	4" WHITE PAVEMENT STRIPING. SEE SPECS.
3	CURB TURNOUT. SEE DETAIL SHEET.
4	SEED ALL DISTURBED AREAS.



SCHMIDT ASSOCIATES
 schmidt-arch.com • 317.263.6226
 415 Massachusetts Ave., Indianapolis, IN 46204
 731 Brent St., #203, Louisville, KY 40204

Project No. 2019-067.BBD
 Project Date 02.27.2025
 Produced JG/RR

Kyle E. Miller

These Drawings and Specifications, and all copies thereof are and shall remain the property and copyright of the Architect. They shall be used only with respect to this Project and are not to be used on any other Project or Work without prior written permission from the Architect.

#	Revision	Date
A1	Addendum 1	03/19/2025

4401 E 62nd St
 Indianapolis, IN 46220

M.S.D. WASHINGTON TOWNSHIP

EASTWOOD & WESTLANE BUS BARN DEMOLITION

SITE LAYOUT PLAN

CL101.E

1 EASTWOOD SITE LAYOUT
 1" = 40'-0"

5

4

3

2

1

D

C

B

A

5

4

3

2

1

GENERAL LAYOUT NOTES

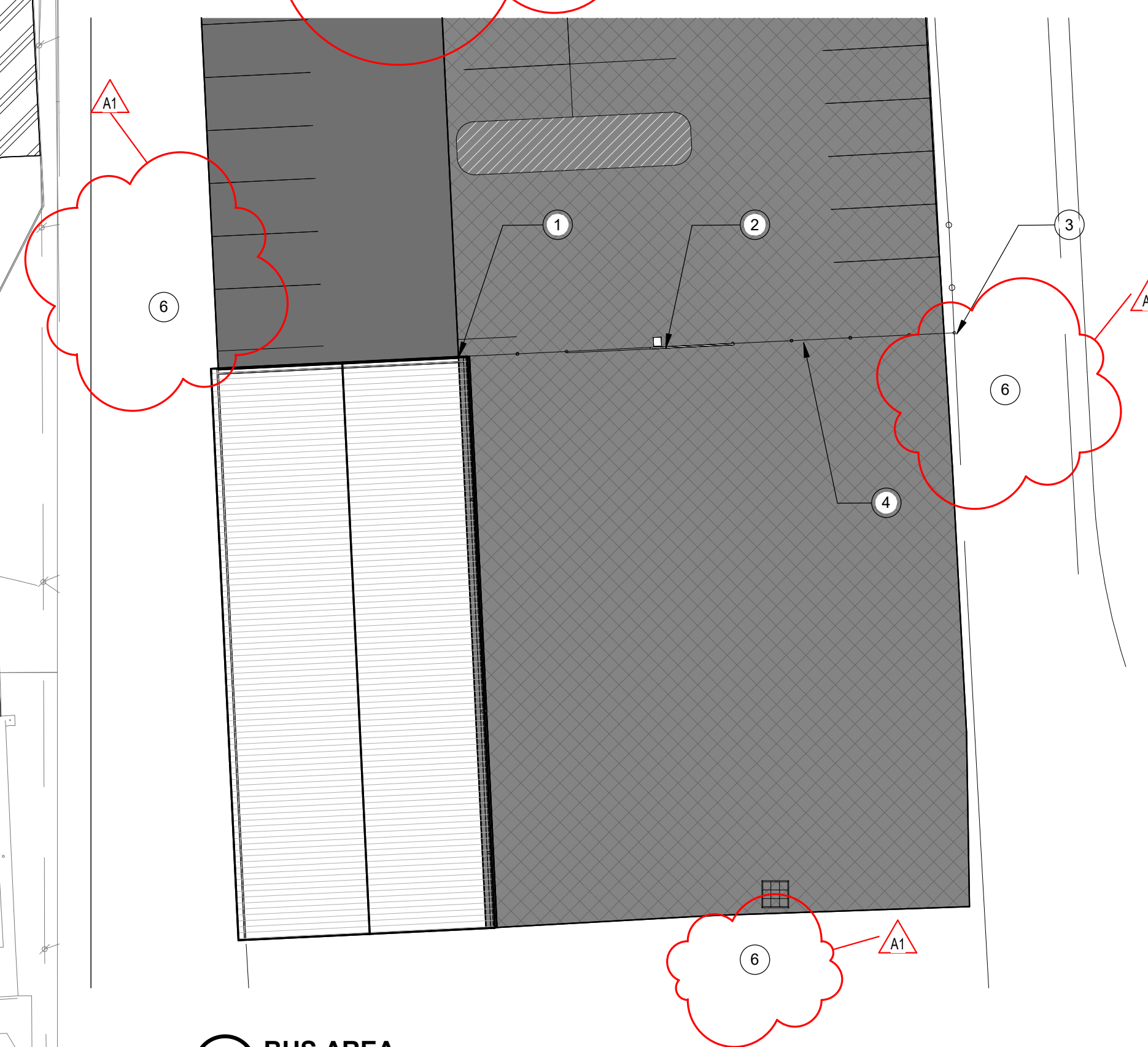
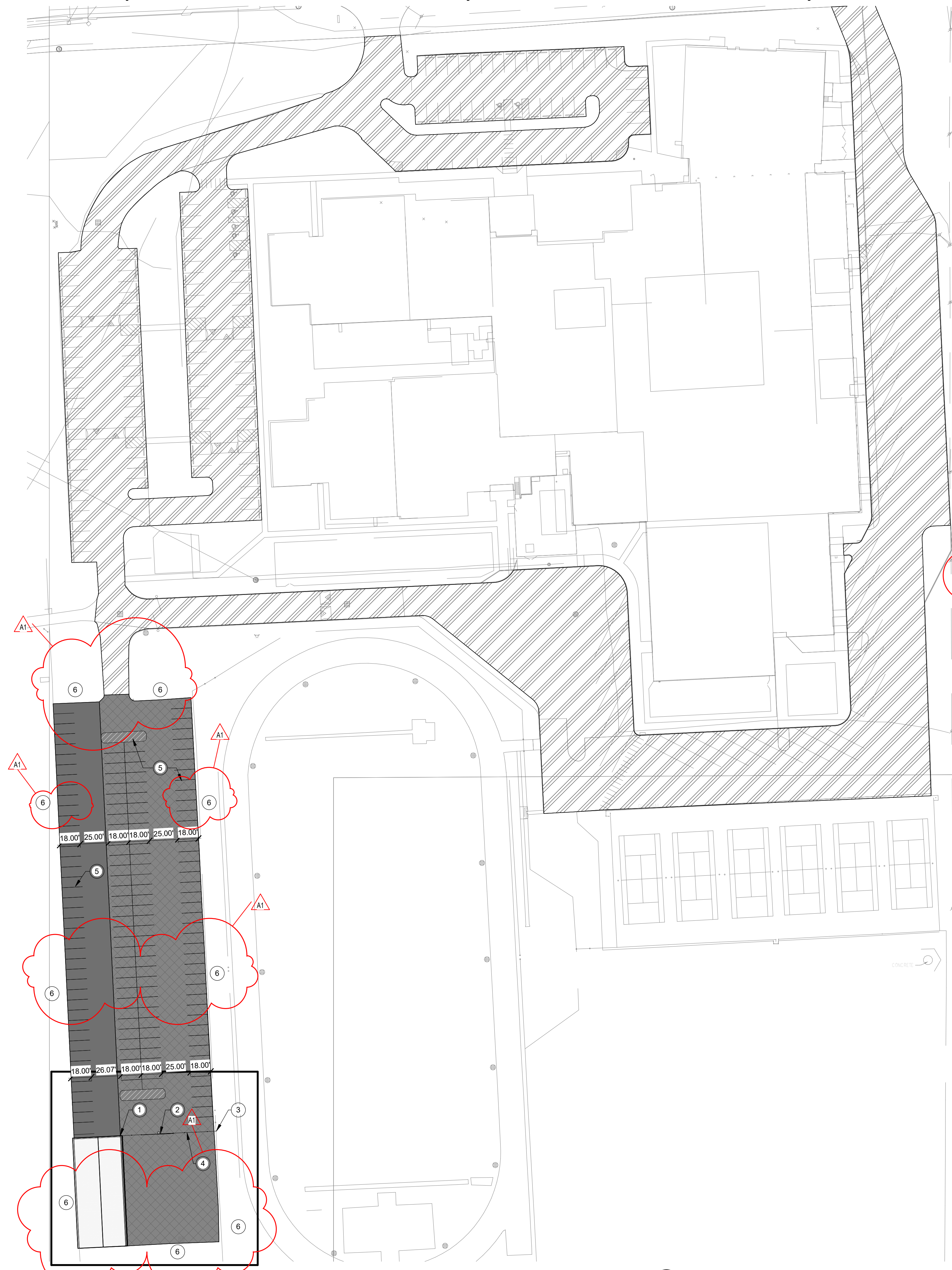
1. REFERENCE C-001 FOR GENERAL LAYOUT PLAN NOTES.
2. NORTHING AND EASTING COORDINATES ARE STATE PLANE COORDINATES BASED ON A TOPOGRAPHIC SURVEY. REFER TO SURVEY DRAWINGS FOR HORIZONTAL CONTROL POINT DATA.
3. ALL EXISTING PAVEMENT DAMAGED DURING CONSTRUCTION SHALL BE REPAIRED TO MATCH EXISTING CONDITIONS.

SITE LAYOUT LEGEND

	STANDARD ASPHALT PAVING, SEE DETAIL SHEET.
	1.5 MILL & OVERLAY, SEE SPECS.
	CRACK FILL, SEAL, & RESTRIPE EXISTING ASPHALT PAVEMENT. ALTERNATE.

SITE LAYOUT NOTES

Key	Note
1	CONNECT FENCE TO BUILDING.
2	RELOCATED EXISTING SLIDE GATE.
3	CONNECT FENCE TO EXISTING FENCE.
4	6' TALL BLACK VINYL CHAINLINK FENCE.
5	4" WHITE PAVEMENT STRIPING. SEE SPECS.
6	SEED ALL DISTURBED AREAS.



2 BUS AREA
1" = 20'-0"

1 WEST LANE SITE LAYOUT
1" = 50'-0"

SCHMIDT ASSOCIATES
415 Massachusetts Avenue
Indianapolis, IN 46204
www.schmidt-arch.com

Project No. 2019-067.BBD
Project Date 02.27.2025
Produced JG/RR

Kyle E. Miller

These Drawings and Specifications, and all copies thereof are and shall remain the property and copyright of the Architect. They shall be used only with respect to this Project and are not to be used on any other Project or Work without prior written permission from the Architect.

#	Revision	Date
A1	Addendum 1	03/19/2025

4401 E 62nd St
Indianapolis, IN 46220

M.S.D. WASHINGTON TOWNSHIP

EASTWOOD & WESTLANE BUS BARN DEMOLITION

SITE LAYOUT

CL101.W

GENERAL SITE NOTES	
#	NOTES
A	REFER TO SHEET E-001 FOR ADDITIONAL INFORMATION.
B	REFER TO LOCAL UTILITIES GUIDE FOR DETAILS AND REQUIREMENTS, INCLUDING, BUT NOT LIMITED TO, SERVICE REQUIREMENTS FOR UNDERGROUND PRIMARY, PROTECTIVE POLES FOR PAD-MOUNTED EQUIPMENT, UTILITY TRANSFORMER CONCRETE PAD DETAIL, ETC. INCLUDE ALL UTILITY FEES REQUIRED IN BID.

SITE PLAN NOTES	
#	NOTES
1	PROVIDE NEW POLE LIGHT FIXTURE ON NEW 42" A.F.G. FOUNDATION. REFER TO DETAIL SHEET E-001.
2	PROVIDE CIRCUIT FROM EXISTING SPARE CIRCUIT BREAKER THROUGH EXISTING LIGHTING CONTACTOR INDICATED FOR POWER AND CONTROL OF NEW SITE LIGHTING. COORDINATE ROUTING ON SITE AND THROUGH BUILDING TO CONNECT.
3	EXISTING 200A, 120/240V, 1Φ, 3W ELECTRICAL SERVICE FROM AES INDIANA TO REMAIN.
4	REFER TO BARN PLANS SHEET E-101.W FOR NEW ELECTRICAL WORK IN REMAINING BARN.


GENERAL SITE DEMOLITION NOTES	
#	NOTES
A	REFER TO SHEET E-001 FOR ADDITIONAL INFORMATION.
B	THIS DRAWING REPRESENTS INFORMATION OBTAINED FROM ORIGINAL CONTRACT DRAWINGS AND FIELD SURVEY. VERIFY BY ON-SITE OBSERVATION THE EXTENT OF WORK PRIOR TO SUBMISSION OF BID.
C	CONTRACT DOCUMENTS CONSIST OF BOTH PROJECT MANUAL AND DRAWINGS AND ARE MEANT TO BE COMPLEMENTARY. ANYTHING APPEARING ON EITHER MUST BE EXECUTED THE SAME AS IF SHOWN ON BOTH.
D	THOROUGHLY EXAMINE THE WORK OF OTHER CONTRACTORS AND PROPERLY INSTALL ALL WORK REQUIRED FOR THE PROJECT.
E	THE OWNER HOLDS RIGHT OF FIRST REFUSAL FOR ALL DEMOLISHED ELECTRICAL EQUIPMENT.
F	ALL ELECTRICAL ITEMS SHOWN WITH LIGHT LINEWORK ARE EXISTING TO REMAIN.
G	REMOVE ALL ELECTRICAL ITEMS SHOWN WITH BOLD/DASHED LINEWORK COMPLETE.
H	COORDINATE AND DISCONNECT ALL ARCHITECTURAL, MECHANICAL, AND PLUMBING EQUIPMENT AS NOTED FOR REMOVAL BY OTHERS. REMOVE ALL ASSOCIATED ELECTRICAL EQUIPMENT, RACEWAYS, CONDUCTORS, ETC. SERVING THE EQUIPMENT.
I	PROVIDE ALL CUTTING AND PATCHING AS REQUIRED FOR THE REMOVAL OF EXISTING ELECTRICAL EQUIPMENT. REFER TO SPECIFICATIONS.
J	PROVIDE A BLANK COVERPLATE FOR ALL EXISTING WALL OPENINGS WHERE ELECTRICAL EQUIPMENT HAS BEEN REMOVED AND NOT REPLACED. IN AREAS RECEIVING NEW WALL TREATMENTS, PATCH THE EXISTING OPENINGS.
K	REFER TO LOCAL UTILITIES GUIDE FOR DETAILS AND REQUIREMENTS, INCLUDING, BUT NOT LIMITED TO, SERVICE REQUIREMENTS FOR UNDERGROUND PRIMARY, PROTECTIVE POLES FOR PAD-MOUNTED EQUIPMENT, UTILITY TRANSFORMER CONCRETE PAD DETAIL, ETC. INCLUDE ALL UTILITY FEES REQUIRED IN BID.
L	COORDINATE WITH C-SERIES DRAWINGS FOR ALL OTHER UTILITIES.

SITE DEMOLITION PLAN NOTES	
#	NOTES
1	REFER TO BARN DEMOLITION PLANS SHEET ED101.W FOR ELECTRICAL DEMOLITION IN EXISTING BARN.



SCHMIDT ASSOCIATES
 schmidt-arch.com • 317.263.6226
 415 Massachusetts Ave., Indianapolis, IN 46204
 731 Brent St., #203, Louisville, KY 40204

Project No. 2019-067.BBD
 Project Date 02.27.2025
 Produced EAG



Sarah K. Hempstead
 ARCHITECT

These Drawings and Specifications, and all copies thereof are and shall remain the property and copyright of the Architect. They shall be used only with respect to this Project and are not to be used on any other Project or Work without prior written permission from the Architect.

#	Revision	Date
A1	Addendum #1	03.19.2025

1301 West 73rd Street
 Indianapolis, IN 46260

KEY PLAN 

M.S.D. WASHINGTON TOWNSHIP

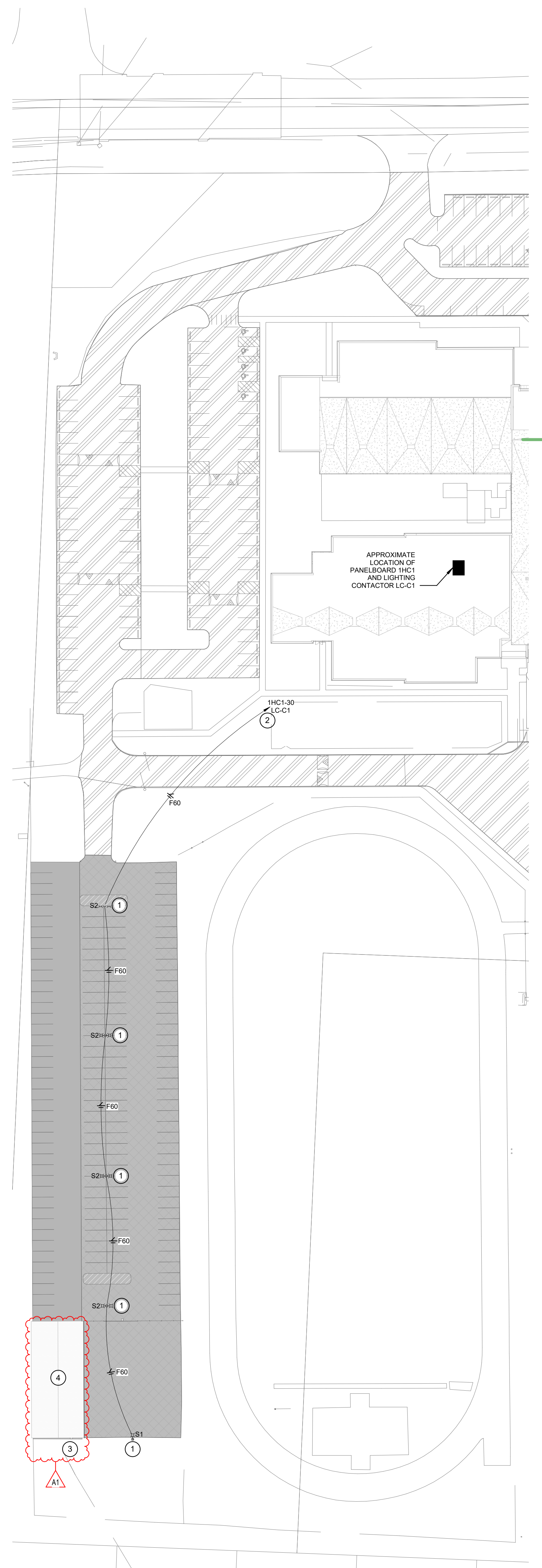


WASHINGTON TOWNSHIP SCHOOLS

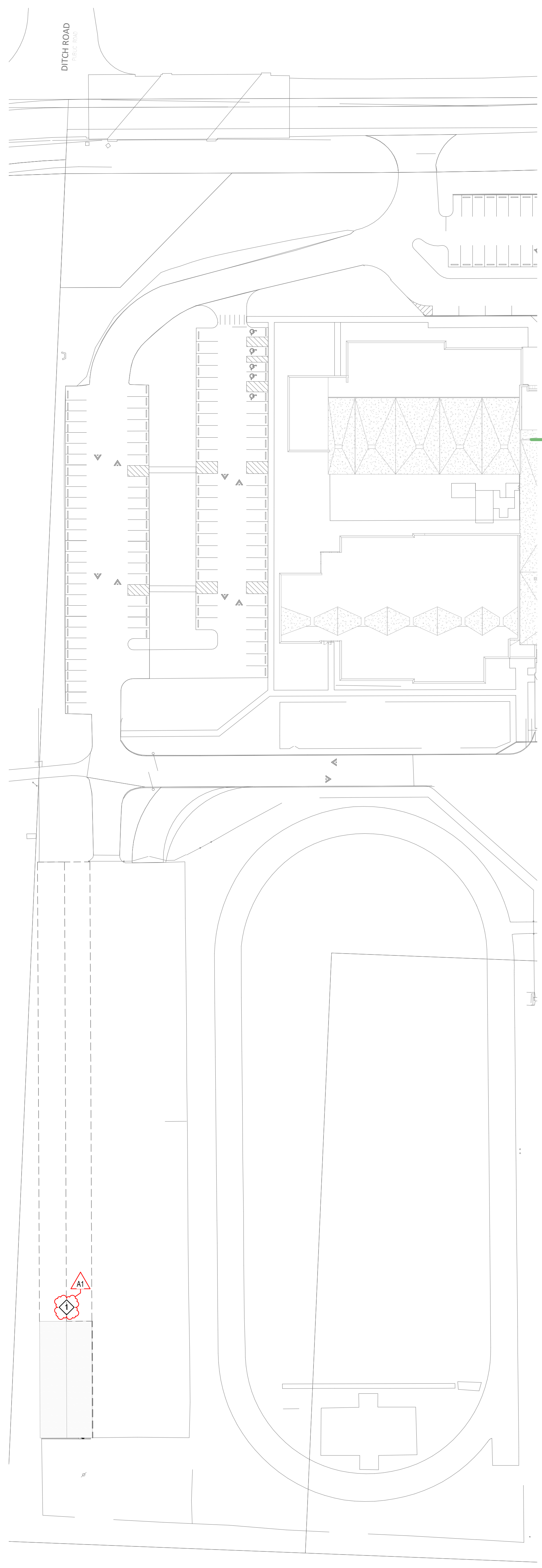
EASTWOOD & WESTLANE BUS BARN DEMOLITION

SITE PLANS

ES101.W



5A SITE PLAN - NEW WORK
 1" = 50'-0"



2A SITE PLAN - DEMOLITION
 1" = 50'-0"

6
5
4
3
2
1
E
D
C
B
A

6
5
4
3
2
1
E
D
C
B
A

DATE: 03.19.2025
 DRAWN BY: J. H. HARRIS
 CHECKED BY: T. J. HARRIS
 PROJECT: EASTWOOD & WESTLANE BUS BARN DEMOLITION
 SHEET: ES101.W

6

5

4

3

2

1

GENERAL POWER NOTES	
#	NOTES
A	REFER TO SHEET E-001 FOR ADDITIONAL INFORMATION.

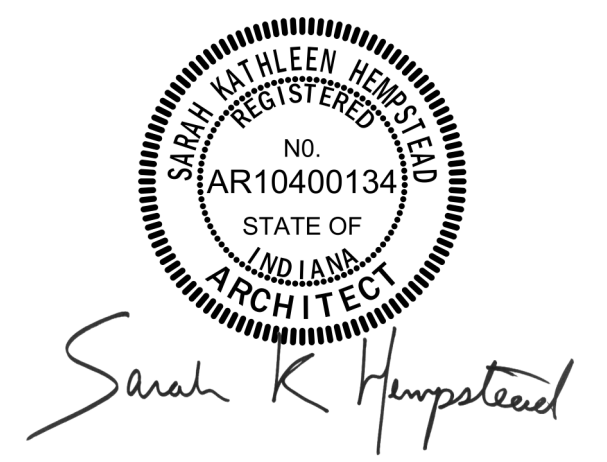
POWER PLAN NOTES	
#	NOTES
1	UNDER ALTERNATE #1, PROVIDE NEW CIRCUIT BREAKERS AND CIRCUITS PER BRANCH PANELBOARD SCHEDULE FOR PANELBOARD. UNDER BASE BID, DO NOT PROVIDE.
2	UNDER ALTERNATE #1, PROVIDE NEW RECEPTACLE, EXTEND EXISTING CIRCUIT WIRING AND RACEWAY TO NEW RECEPTACLE, AND EXTEND TO NEW CIRCUIT BREAKER INDICATED. UNDER BASE BID, DO NOT PROVIDE.
3	UNDER ALTERNATE #1, PROVIDE NEW RECEPTACLE, RACEWAY, AND WIRING COMPLETE FROM NEW CIRCUIT BREAKER INDICATED. UNDER BASE BID, DO NOT PROVIDE.

GENERAL LIGHTING NOTES	
#	NOTES
A	REFER TO SHEET E-001 FOR ADDITIONAL INFORMATION.

LIGHTING PLAN NOTES	
#	NOTES
1	UNDER ALTERNATE #1, PROVIDE ELECTRICALLY OPERATED, MECHANICALLY HELD LIGHTING CONTACTOR FOR EXTERIOR LIGHTING CONTROLS. PROVIDE PHOTOCELL ON ROOF, COORDINATE LOCATION. UNDER BASE BID, DO NOT PROVIDE.
2	UNDER ALTERNATE #1, MODIFY ELECTRICAL CONNECTIONS TO EXISTING WALL LIGHT FIXTURE TO REMAIN. CONNECT CIRCUIT WIRING THROUGH LIGHTING CONTACTOR LC-BB TO CIRCUIT INDICATED. UNDER BASE BID, EXISTING FIXTURE AND WIRING TO REMAIN UNMODIFIED.
3	UNDER ALTERNATE #1, INSTALL EXISTING WALL LIGHT FIXTURE REMOVED DURING DEMOLITION AT SAME MOUNTING HEIGHT AS EXISTING WALL LIGHT FIXTURE. CONNECT CIRCUIT WIRING THROUGH LIGHTING CONTACTOR LC-BB TO CIRCUIT INDICATED. UNDER BASE BID, EXISTING FIXTURES TO REMAIN IN STORAGE.
4	UNDER ALTERNATE #1, MODIFY ELECTRICAL CONNECTIONS TO EXISTING CEILING LIGHT FIXTURE TO REMAIN. CONNECT CIRCUIT WIRING THROUGH WALL TOGGLE SWITCHES TO CIRCUIT INDICATED. UNDER BASE BID, EXISTING FIXTURES AND WIRING TO REMAIN UNMODIFIED.
5	UNDER ALTERNATE #1, PROVIDE WALL TOGGLE SWITCH IN WEATHERPROOF BOX WITH OPERABLE COVER TO CONTROL EXISTING CEILING LIGHT FIXTURES TO REMAIN. UNDER BASE BID, DO NOT PROVIDE.

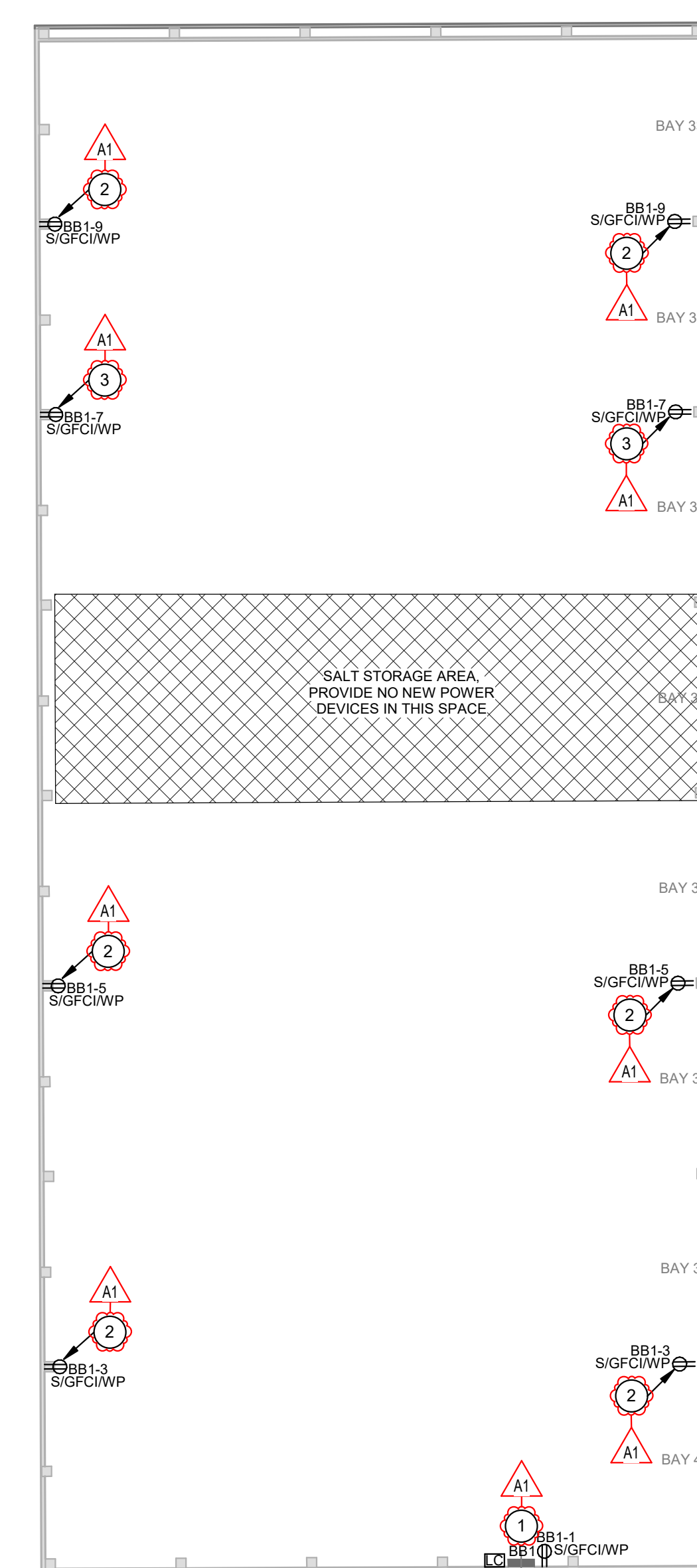


Project No. 2019-067.BBD
 Project Date 02.27.2025
 Produced EAG

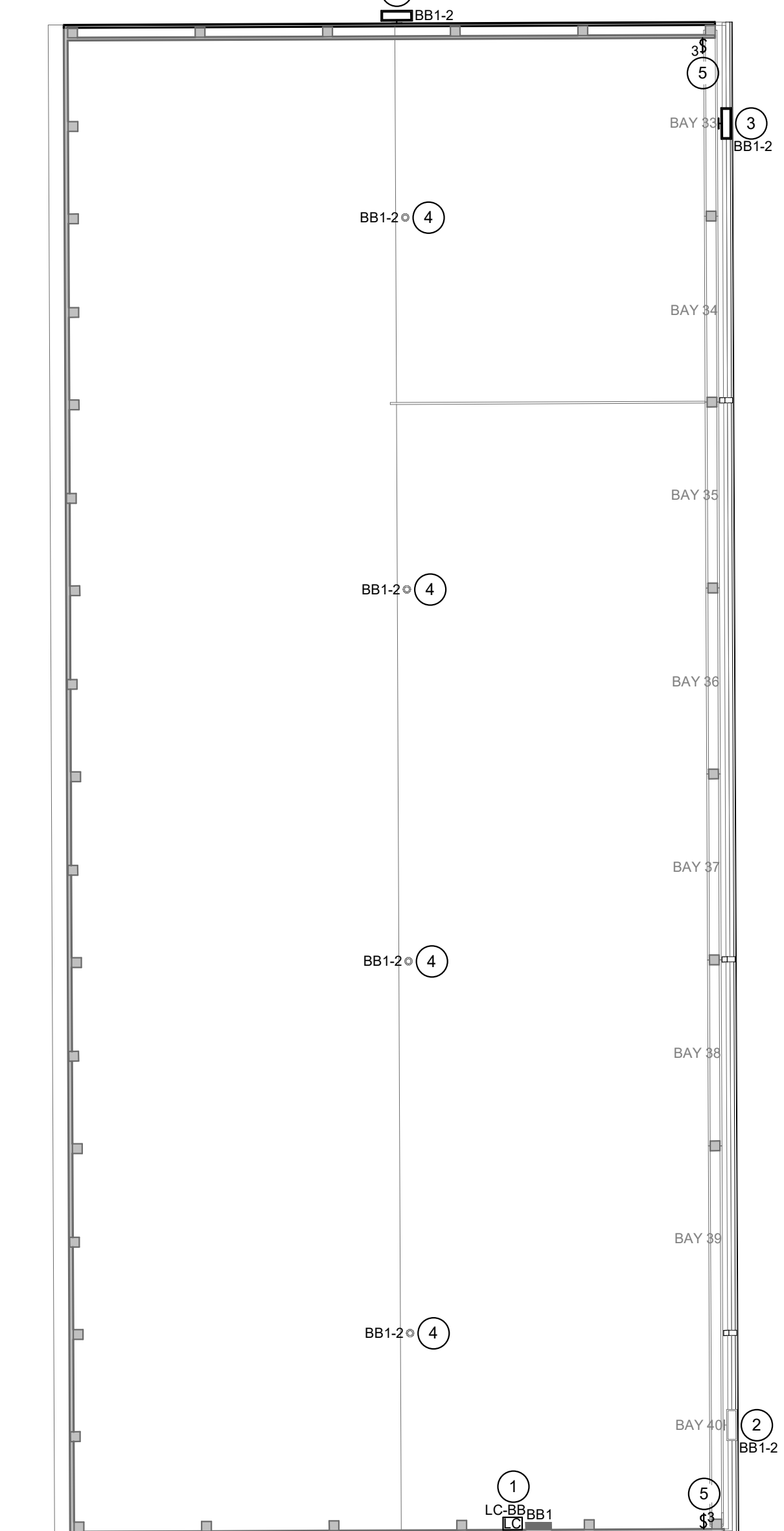


These Drawings and Specifications, and all copies thereof are and shall remain the property and copyright of the Architect. They shall be used only with respect to this Project and are not to be used on any other Project or Work without prior written permission from the Architect.

#	Revision	Date
A1	Addendum #1	03.19.2025



3A BARN POWER PLAN
 1/8" = 1'-0"



1A BARN LIGHTING PLAN
 1/8" = 1'-0"

1301 West 73rd Street
 Indianapolis, IN 46260

KEY PLAN

M.S.D. WASHINGTON TOWNSHIP



WASHINGTON TOWNSHIP SCHOOLS

EASTWOOD & WESTLANE BUS BARN DEMOLITION

BARN PLANS

E-101.W

EAGLE ARCHITECTURE
 2200 W. 10TH AVENUE, SUITE 100
 INDIANAPOLIS, IN 46204
 TEL: 317.263.6226
 WWW.EAGLEARCHITECTURE.COM

LABEL	DESCRIPTION	VOLTAGE	SOURCE			MOUNTING	LENS/REFLECTOR	CERTIFICATIONS	ACCEPTABLE MANUFACTURERS	LABEL	
			TYPE	LUMENS	WATTS						CCT
S1	LED SITE FIXTURE, SINGLE-PIECE ALUMINUM HOUSING, ARM MOUNT, U.L. LISTED WET LOCATION, DARK BRONZE FINISH, ROUND, STRAIGHT, STEEL, POLE DESIGNED TO SUPPORT FIXTURE(S) IN 100 MPH WINDS WITH 1.3 GUST FACTOR, PRIMARY FUSES, FLAT LENS, SURGE PROTECTION, (1) HEAD.	120/277 V	LED	19,000 LM	163 W	4000 K	25' POLE, BASE BY DIVISION 26 CONTRACTOR	TYPE IV DISTRIBUTION	N/A	McRAW-EDISON GLEON LED BEACON VPS LITHONIA DSX1 LED	S1
S2	LED SITE FIXTURE, SINGLE-PIECE ALUMINUM HOUSING, ARM MOUNT, U.L. LISTED WET LOCATION, DARK BRONZE FINISH, ROUND, STRAIGHT, STEEL, POLE DESIGNED TO SUPPORT FIXTURE(S) IN 100 MPH WINDS WITH 1.3 GUST FACTOR, PRIMARY FUSES, FLAT LENS, SURGE PROTECTION, (2) HEADS, 180° APART.	120/277 V	LED	19,000 LM	326 W	4000 K	25' POLE, BASE BY DIVISION 26 CONTRACTOR	TYPE IV DISTRIBUTION	N/A	McRAW-EDISON GLEON LED BEACON VPS LITHONIA DSX1 LED	S2

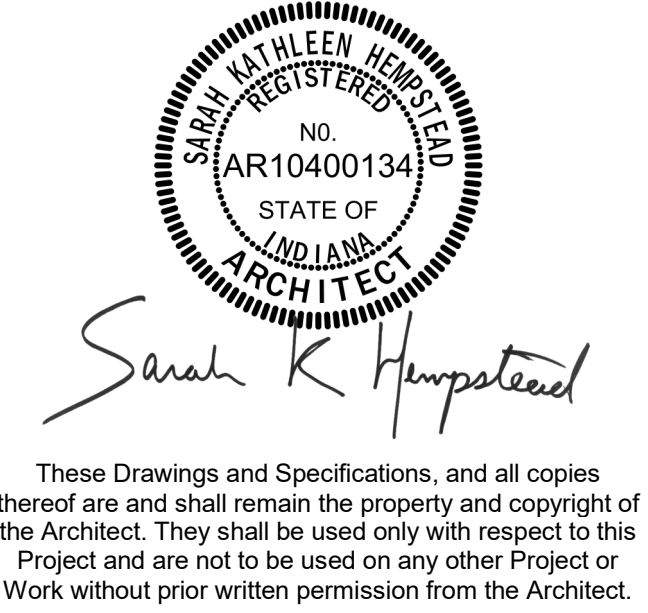
GENERAL LIGHT FIXTURE SCHEDULE NOTES	
#	NOTES
A	REFER TO LIGHT FIXTURE SCHEDULE AND REFLECTED CEILING PLANS FOR MOUNTING REQUIREMENTS, CEILING TYPES, AND FINAL LOCATIONS. PROVIDE APPROPRIATE MOUNTING TRIM REQUIRED FOR CEILING TYPE.
B	PROVIDE FACTORY INSTALLED DISCONNECTS FOR ALL LINEAR FIXTURES.
C	PROVIDE SELF-DIAGNOSTICS AND SELF-TESTING FOR ALL LIFE SAFETY FIXTURES (EXIT FIXTURES, WALL PACKS, INVERTERS BALLASTS, ETC.)
D	PROVIDE VIBRATION DAMPERS FOR ALL ALUMINUM & STEEL POLES 20'-0" AND ABOVE.

262913.1 - LIGHTING CONTACTORS SCHEDULE														
LABEL	LOCATION		EQUIPMENT RATINGS				COIL CIRCUIT		VOLTAGE	PANEL	CIRCUIT	CONTROL	CIRCUIT(S) CONTROLLED	REMARKS
	NUMBER	NAME	VOLTAGE	AMPERAGE	POLES	NEMA ENCL	ACCESSORIES	VOLTAGE						
LC-BB			600 V	30 A	4	NEMA 1	H-O-A PILOT LIGHT	120 V	BB1	4	PHOTOCELL LOCATED ON ROOF	BB1-2	PROVIDE UNDER ALTERNATE BID #1 ONLY. CONTROL WALL LIGHT FIXTURES ON OUTSIDE OF BUILDING.	

EXISTING BRANCH PANELBOARD SCHEDULE													
DESIGNATION: BB1		VOLTS: 120/240 V				PHASES: 1		MAINS RATING: 200 A		MOUNTING: SURFACE		MAINS TYPE: MCB	
SUPPLY FROM:		WIRES: 3				AIC RATING:		MCB RATING: 200 A		MCB OPTIONS:			
CKT NO.	CIRCUIT ROOM #	CIRCUIT TYPE	TRIP	P	A	B	P	TRIP	CIRCUIT TYPE	CIRCUIT ROOM #	CKT NO.		
1	BARN AT BB1 - NOTE 1	RECEPT	20 A	1	0.18	0.24		1	20 A	LIGHTING	BUS BARN - NOTE 1	2	
3	BARN BAYS 39, 40 - NOTE 1	RECEPT	20 A	1		0.36	0.50	1	20 A	LC-BB	BUS BARN - NOTE 1	4	
5	BARN BAYS 37, 38 - NOTE 1	RECEPT	20 A	1	0.36	0.00		1	20 A		SPARE - NOTE 1	6	
7	BARN BAY 35 - NOTE 1	RECEPT	20 A	1			0.36	0.00	1	20 A	SPARE - NOTE 1	8	
9	BARN BAYS 33, 34 - NOTE 1	RECEPT	20 A	1	0.36	0.00			1	20 A	SPARE - NOTE 1	10	
--	11	SPARE - NOTE 1	20 A	1			0.00	0.00	1	20 A	SPARE - NOTE 1	12	
--	13	SPARE - NOTE 1	20 A	1	0.00	0.00			1	20 A	SPARE - NOTE 1	14	
--	15	SPARE - NOTE 1	20 A	1			0.00	0.00	1	20 A	SPARE - NOTE 1	16	
--	17	SPACE	--	1	--	--	--	--	1	--	SPACE	18	
--	19	SPACE	--	1	--	--	--	--	1	--	SPACE	20	
--	21	SPACE	--	1	--	--	--	--	1	--	SPACE	22	
--	23	SPACE	--	1	--	--	--	--	1	--	SPACE	24	
--	25	SPACE	--	1	--	--	--	--	1	--	SPACE	26	
--	27	SPACE	--	1	--	--	--	--	1	--	SPACE	28	
--	29	SPACE	--	1	--	--	--	--	1	--	SPACE	30	
--	31	SPACE	--	1	--	--	--	--	1	--	SPACE	32	
--	33	SPACE	--	1	--	--	--	--	1	--	SPACE	34	
--	35	SPACE	--	1	--	--	--	--	1	--	SPACE	36	
--	37	SPACE	--	1	--	--	--	--	1	--	SPACE	38	
--	39	SPACE	--	1	--	--	--	--	1	--	SPACE	40	
--	41	SPACE	--	1	--	--	--	--	1	--	SPACE	42	
TOTAL LOAD:					1.14 kVA	1.22 kVA							
TOTAL AMPS:					10 A	10 A							
TOTAL CONNECTED LOAD:					2.36 kVA			2.39 kVA		TOTAL DEMAND LOAD:			
TOTAL CONNECTED AMPS:					10 A			10 A		TOTAL DEMAND AMPS:			
PANELBOARD & CIRCUIT BREAKER OPTIONS ("O" COLUMN / MCB OPTIONS ABBREVIATIONS)		LOAD CLASSIFICATION		CONNECTED LOAD (VA)		DEMAND FACTOR		ESTIMATE DEMAND (VA)					
G	CONTACTOR CONTROLLED	Receptacle - General	1620 VA	100.00%	1620 VA								
G	GFCI PROTECTED	Lighting - Interior	120 VA	125.00%	150 VA								
P	HANDLE LOCKING DEVICE	Lighting - Exterior	620 VA	100.00%	620 VA								
S	SHUNT TRIP												
X	80% RATED MAIN CIRCUIT BREAKER WITH LSI												
Y	100% RATED MAIN CIRCUIT BREAKER WITH LSI												
Z	100% RATED MAIN CIRCUIT BREAKER WITH LSIG												
	FEED THROUGH LUGS (FTL)												
	SUB FEED LUGS (SFL)												
NOTES:													
1. EXISTING SIEMENS PANELBOARD TO REMAIN, UNO													
2. PROVIDE NEW CIRCUIT BREAKER AND CONNECT TO LOAD INDICATED UNDER ALTERNATE BID #1 ONLY.													



Project No. 2019-067.BBD
Project Date 02.27.2025
Produced EAG



#	Revision	Date
A1	Addendum #1	03.19.2025

1301 West 73rd Street
Indianapolis, IN 46260

GENERAL ONE-LINE DIAGRAM NOTES	
#	NOTES
A	REFER TO SHEET E-001 FOR ADDITIONAL INFORMATION.

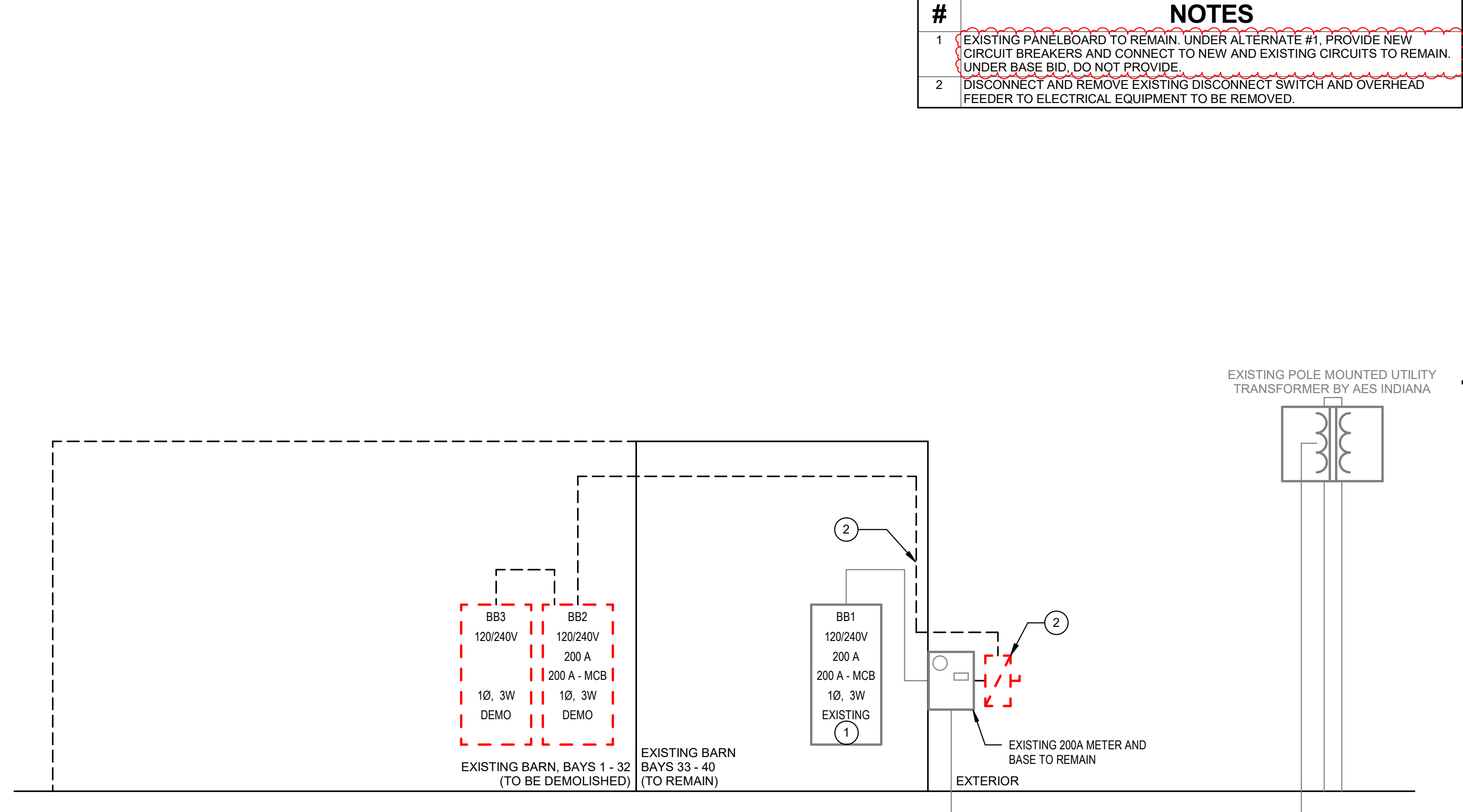
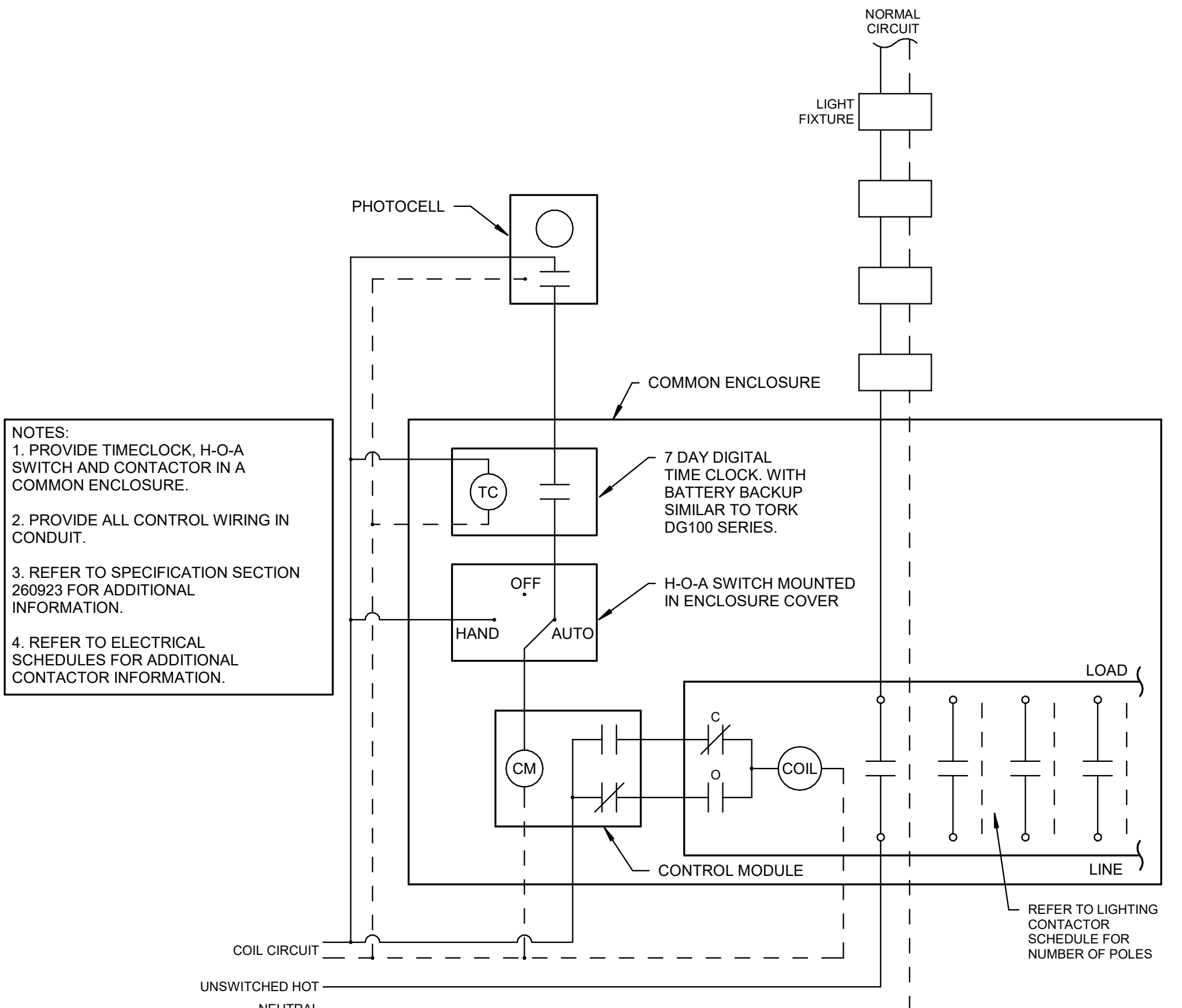
ONE-LINE DIAGRAM NOTES	
#	NOTES
1	EXISTING PANELBOARD TO REMAIN UNDER ALTERNATE #1, PROVIDE NEW CIRCUIT BREAKERS AND CONNECT TO NEW AND EXISTING CIRCUITS TO REMAIN. UNDER BASE BID, DO NOT PROVIDE.
2	DISCONNECT AND REMOVE EXISTING DISCONNECT SWITCH AND OVERHEAD FEEDER TO ELECTRICAL EQUIPMENT TO BE REMOVED.

KEY PLAN



ONE-LINE, SCHEMATICS, AND SCHEDULES

E-601.W



2A EXTERIOR LIGHTING CONTROL SYSTEM SCHEMATIC NOT TO SCALE

1A ONE LINE DIAGRAM - BARN NOT TO SCALE