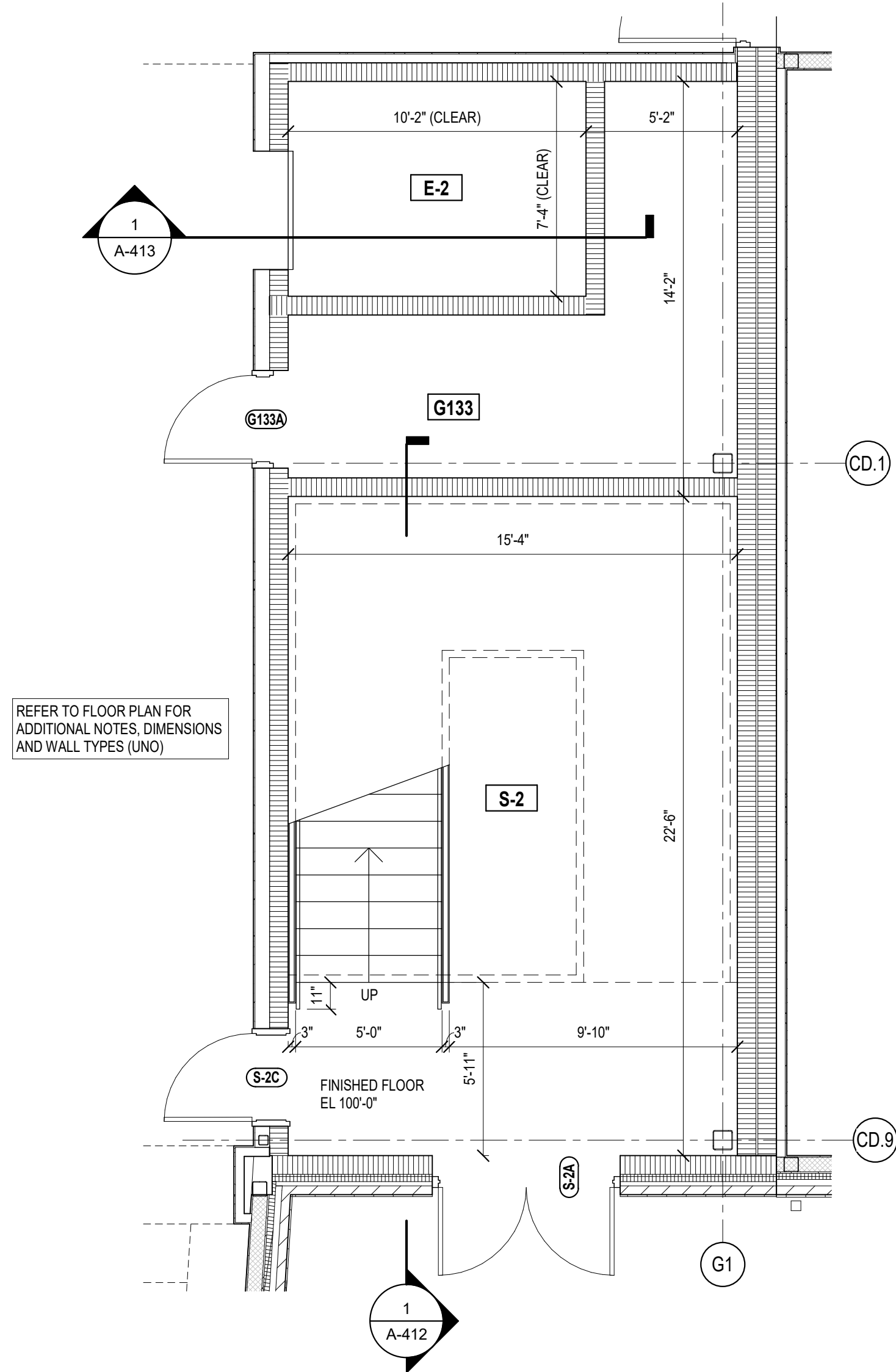
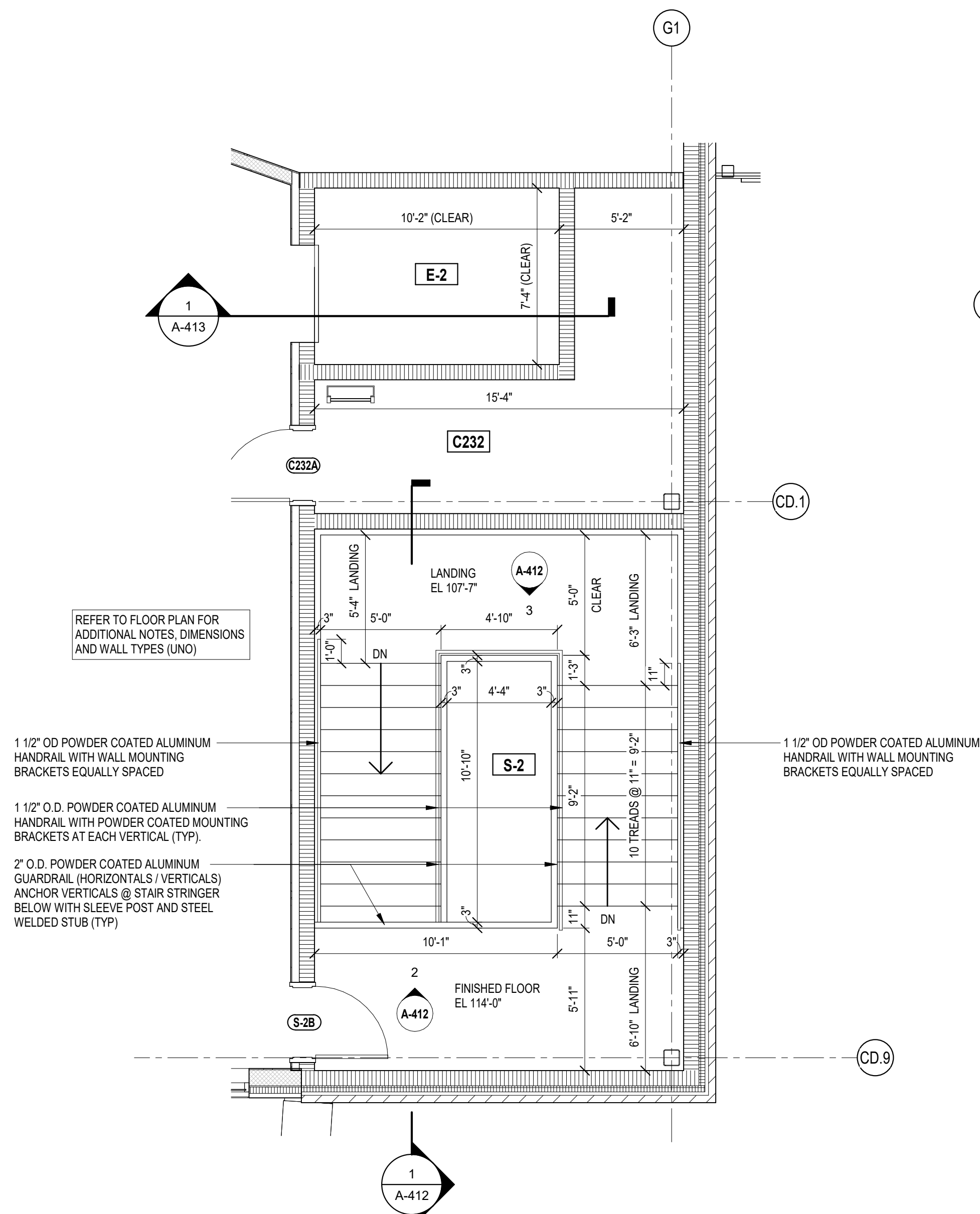


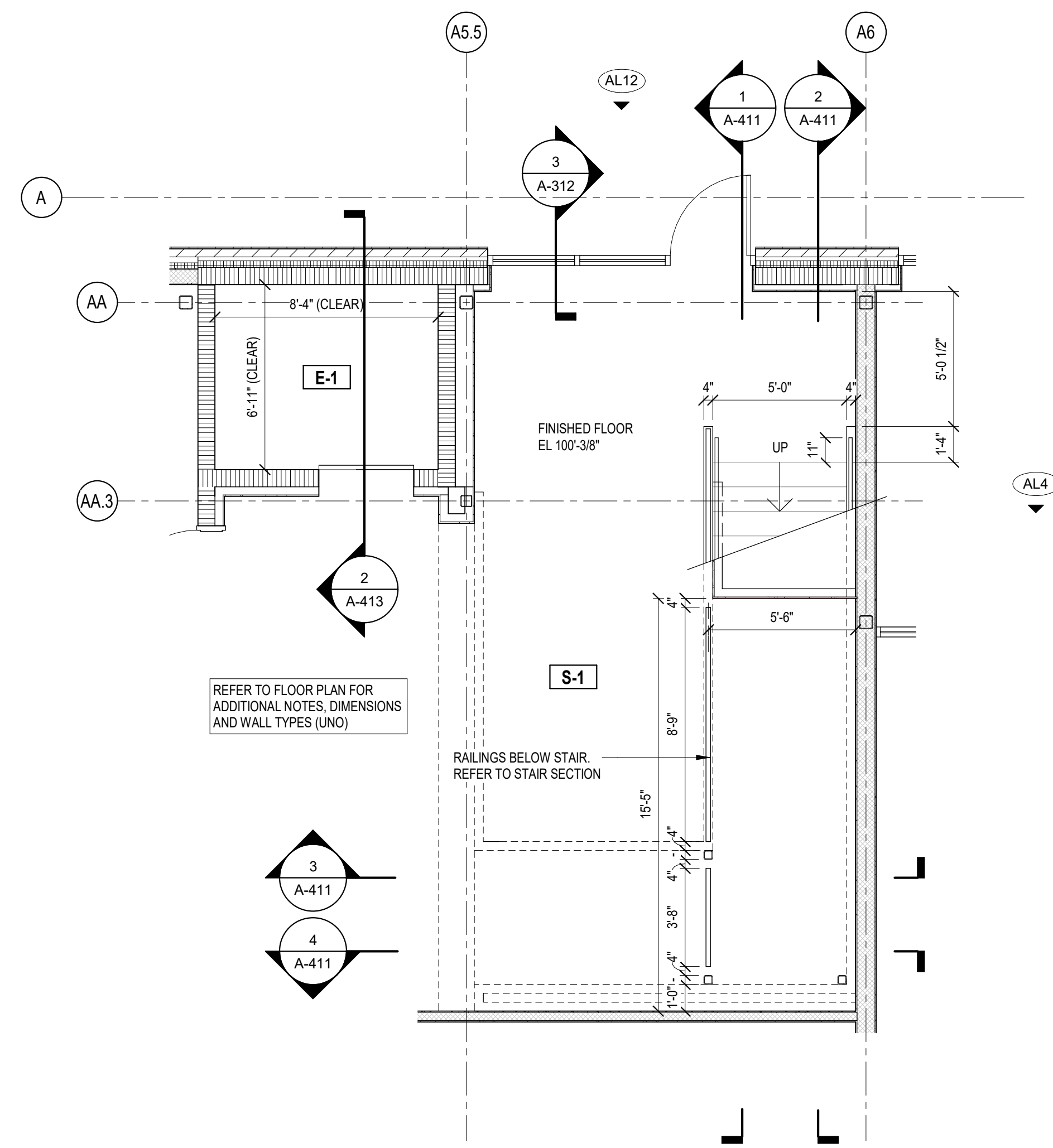
5 DETAIL - DOCK LIFT
SCALE: 1/2" = 1'-0"



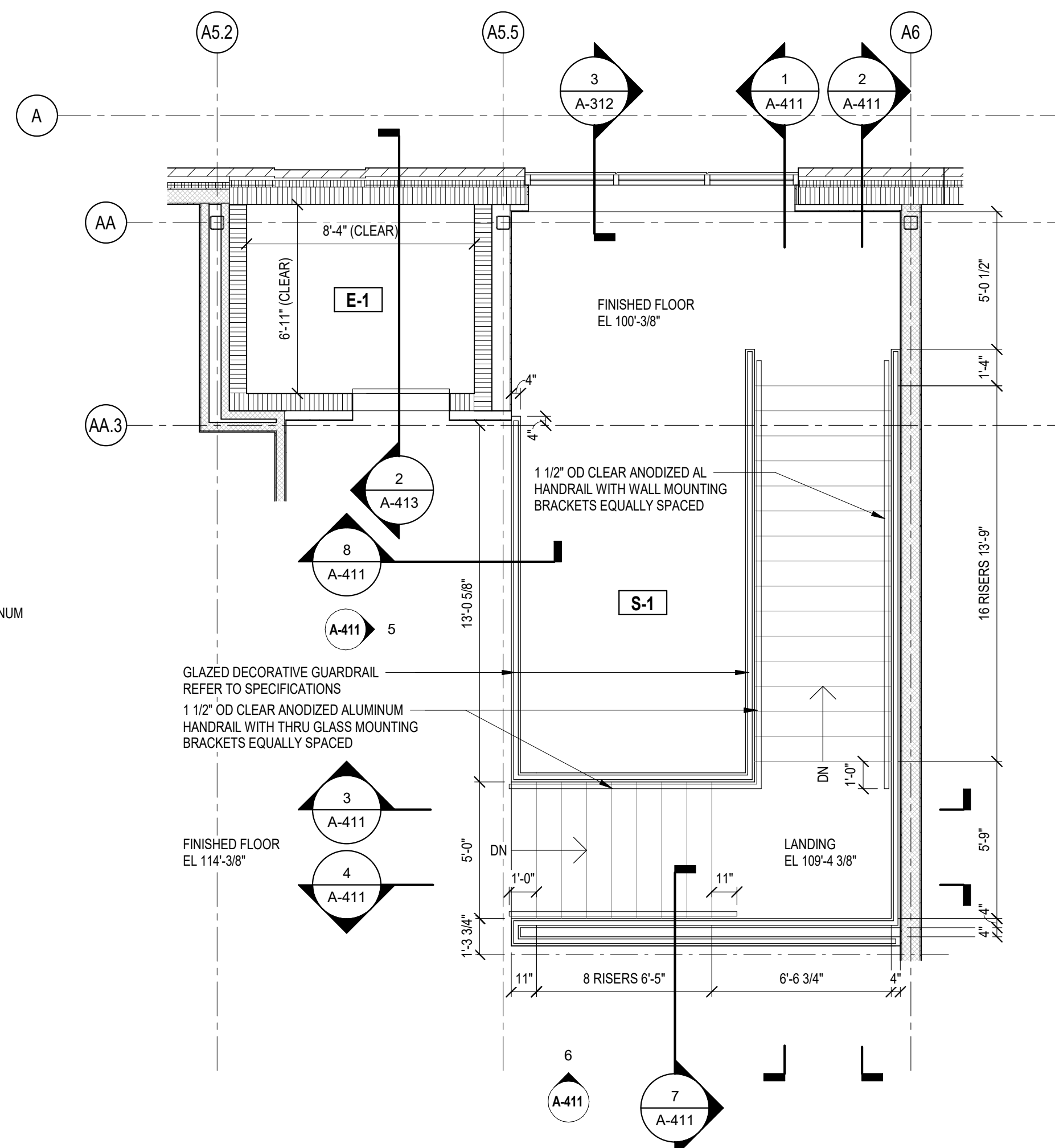
3 ENLARGED PLAN - STAIR (S-2) & ELEVATOR (E-2) FIRST FLOOR
SCALE: 1/4" = 1'-0"



4 ENLARGED PLAN - STAIR (S-2) & ELEVATOR (E-2) SECOND FLOOR
SCALE: 1/4" = 1'-0"



1 ENLARGED PLAN - STAIR (S-1) & ELEVATOR (E-1) FIRST FLOOR
SCALE: 1/4" = 1'-0"



2 ENLARGED PLAN - STAIR (S-1) & ELEVATOR (E-1) SECOND FLOOR
SCALE: 1/4" = 1'-0"

VERTICAL CIRCULATION NOTES
(ALL NOTES MAY NOT BE INDICATED ON THIS SHEET)

NO. DESCRIPTION

VERIFICATION NOTE
CONTRACTOR SHALL VERIFY ALL DIMENSIONS AND CLEARANCES AND ALL EXISTING FIELD CONDITIONS BEFORE STARTING CONSTRUCTION. COMMENCEMENT OF WORK CONSTITUTES ACCEPTANCE OF CONDITIONS.
SHOULD DIFFERENT CONDITIONS BE ENCOUNTERED, CONTACT THE ARCHITECT BEFORE PROCEEDING WITH WORK.

COPYRIGHT 2025 BY FANNINGHOWEY ASSOCIATES, INC.

ZIONSVILLE CS NEW EARLY LEARNING CENTER / EDUCATIONAL SERVICES CENTER

S 700 E AND E 550 S
ZIONSVILLE, INDIANA 46077

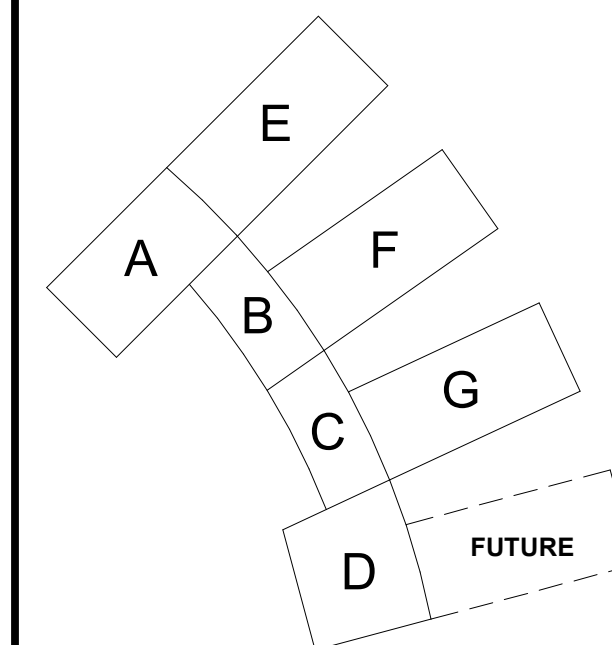
ZIONSVILLE COMMUNITY
SCHOOLS



ARCHITECT

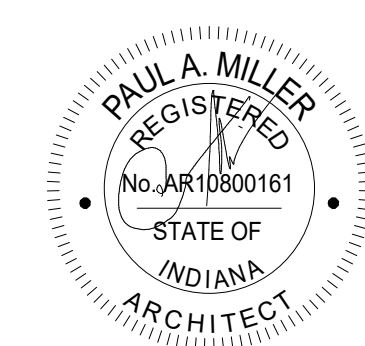
**FANNING
HOWEY**

317.848.0966 WWW.FHAI.COM
350 E NEW YORK ST #500, INDIANAPOLIS, IN 46204



KEY PLAN

ISSUED FOR BID



PROJECT MANAGER: JM
DRAWN BY: BMD
PROJECT NUMBER: 224033.00
PROJECT ISSUE DATE: 06.24.2025

REV. NO.	DESCRIPTION	DATE

VERTICAL CIRCULATION

A-410