

CREEKSIDE CAMPUS PAVING AND PLAYGROUND IMPROVEMENTS

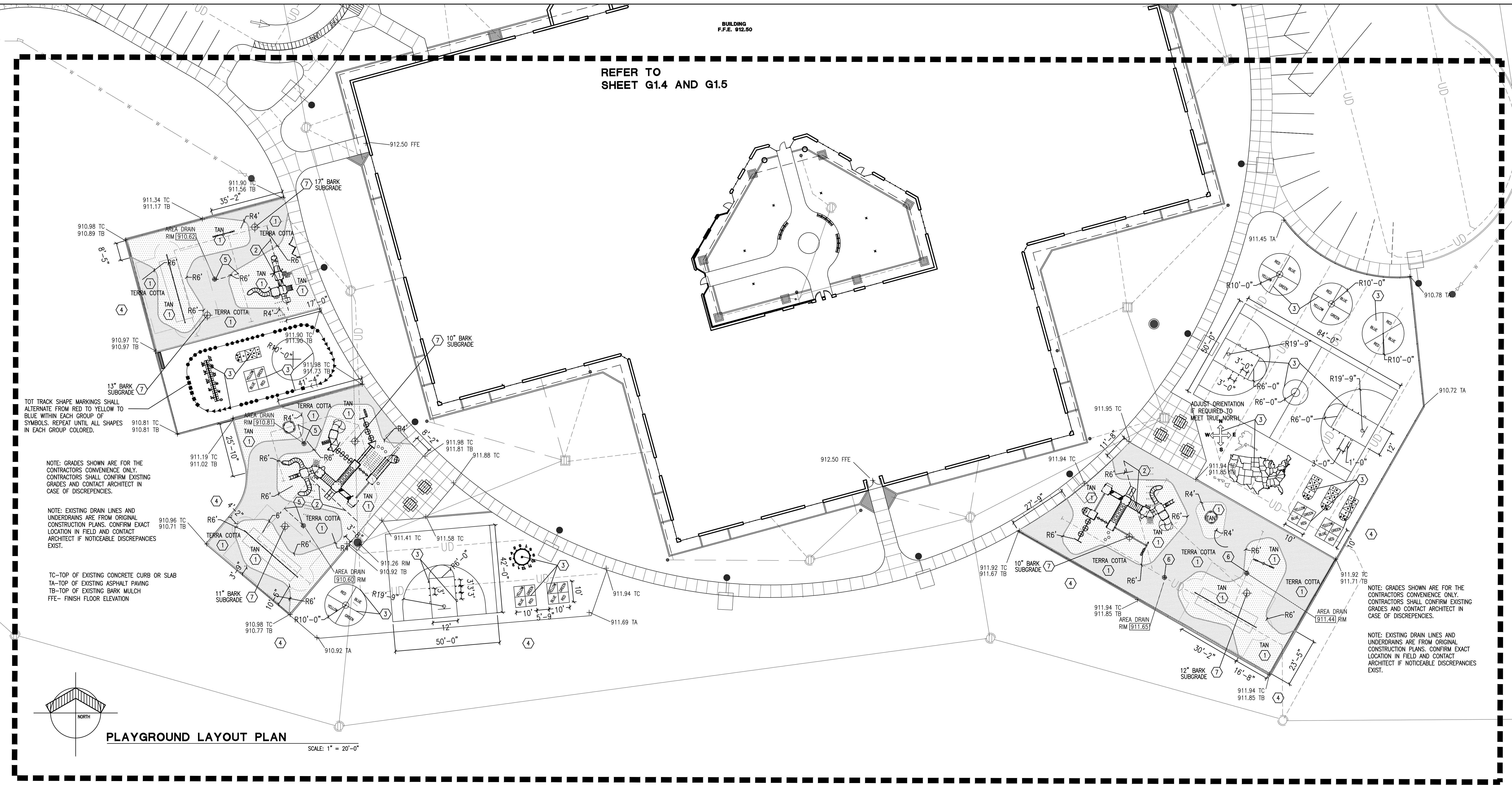
CARMEL CLAY SCHOOLS
 3525 w. 126th street
 CARMEL, INDIANA

ARCHITECT



317-848-0966 fhai.com

REFER TO SHEET G1.4 AND G1.5

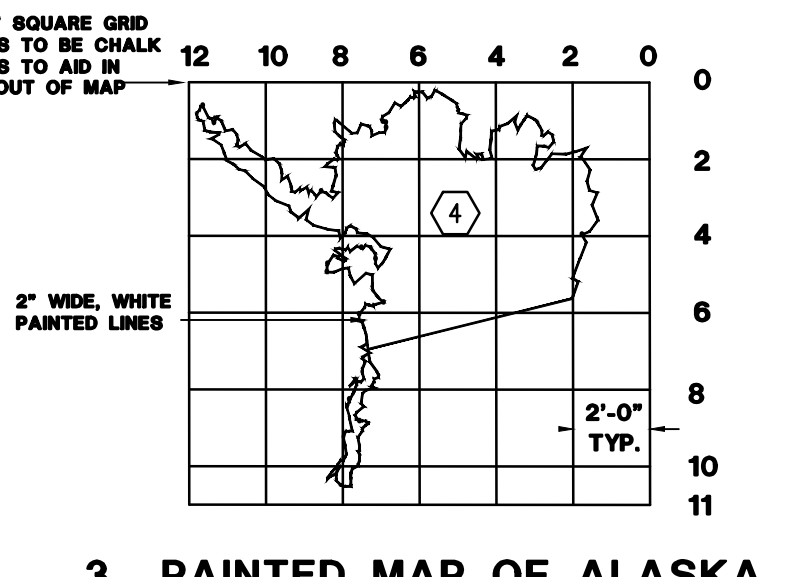
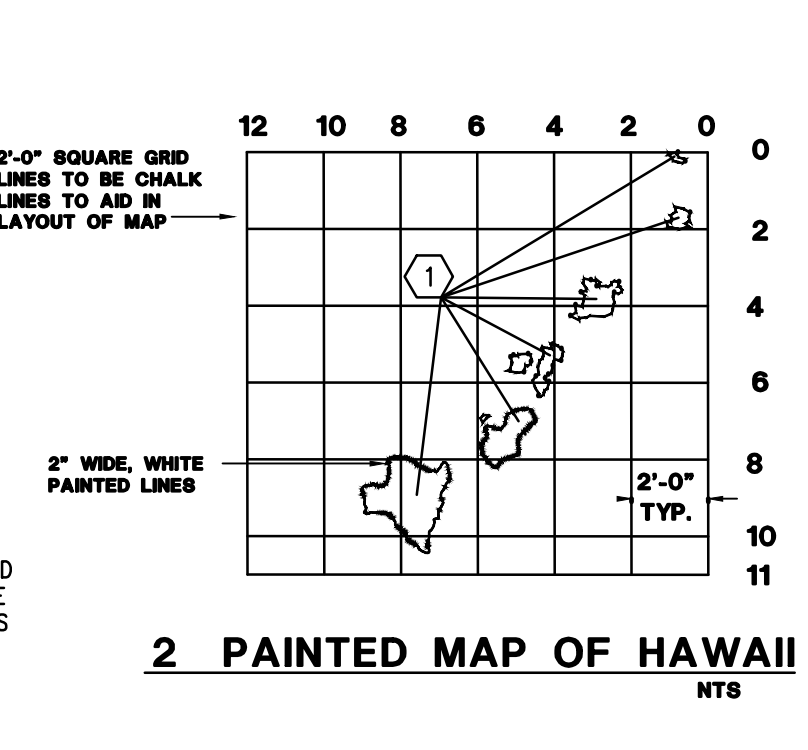
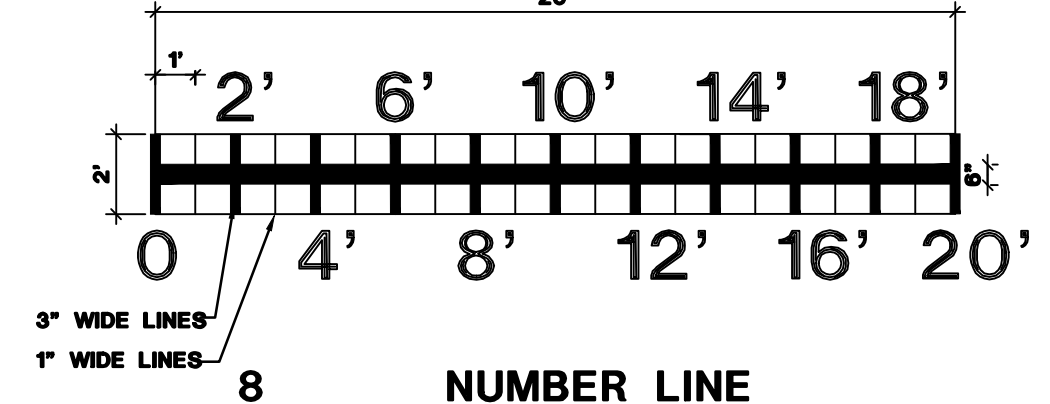
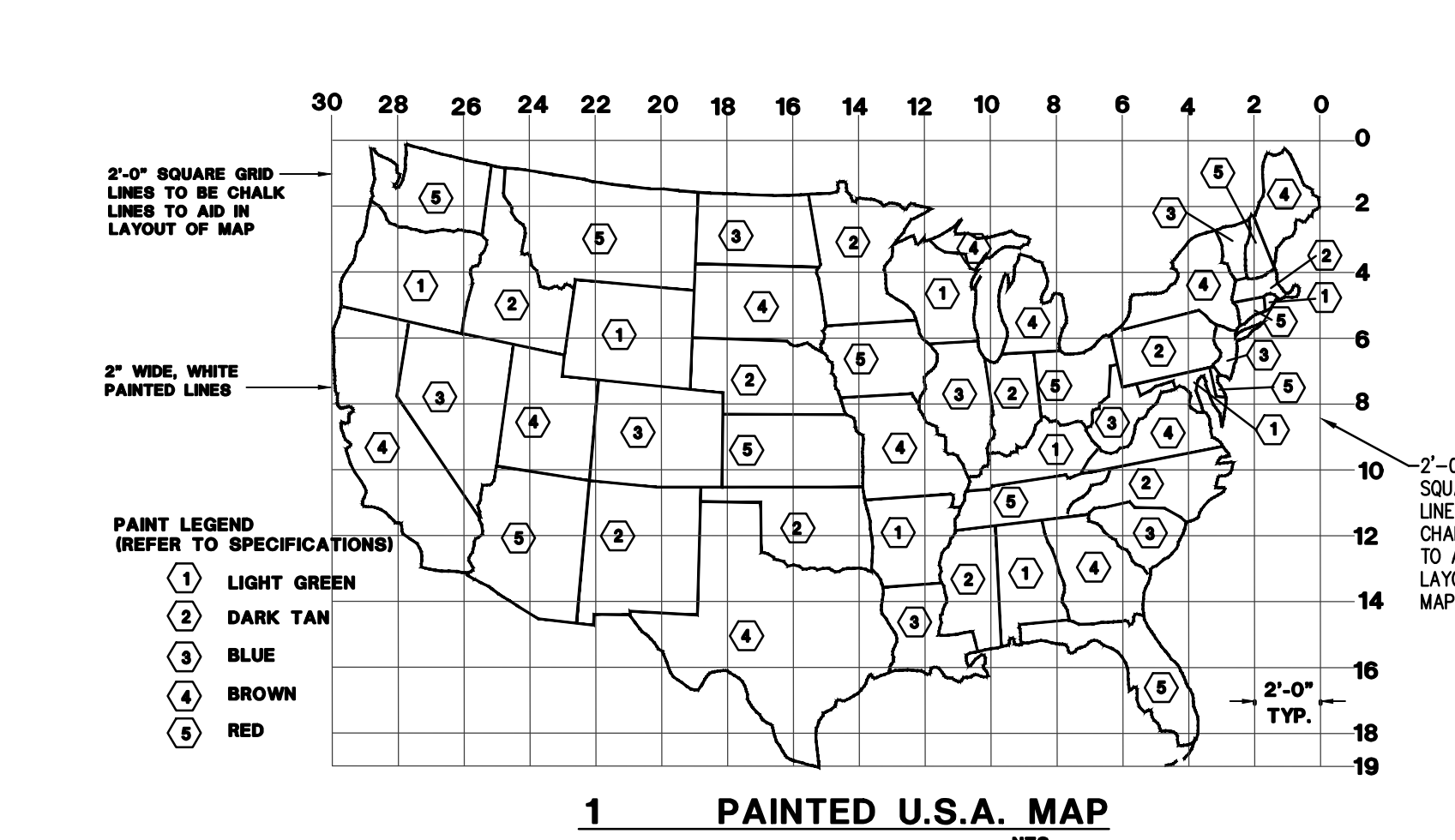
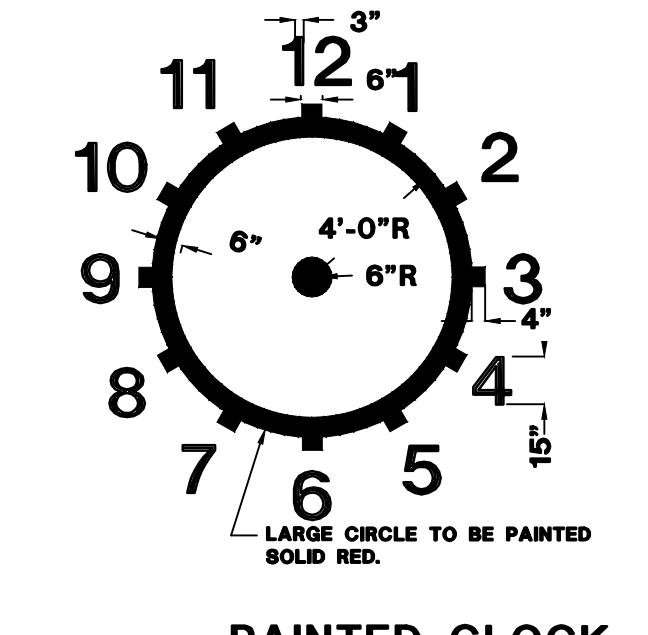
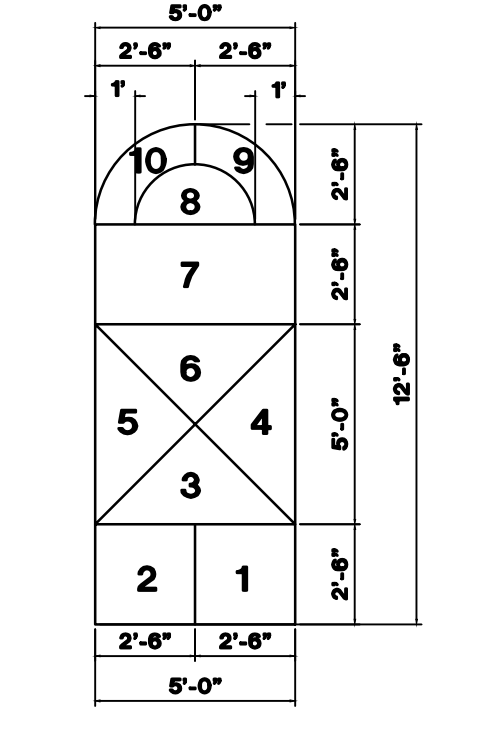
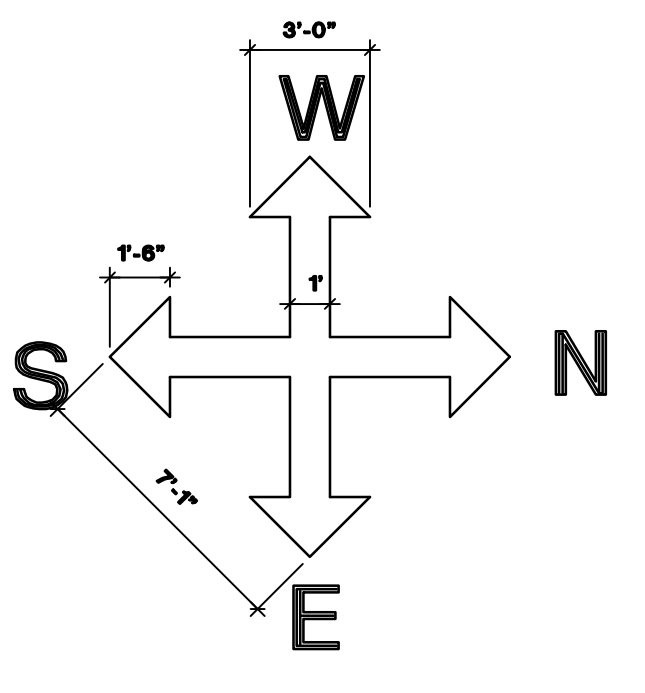
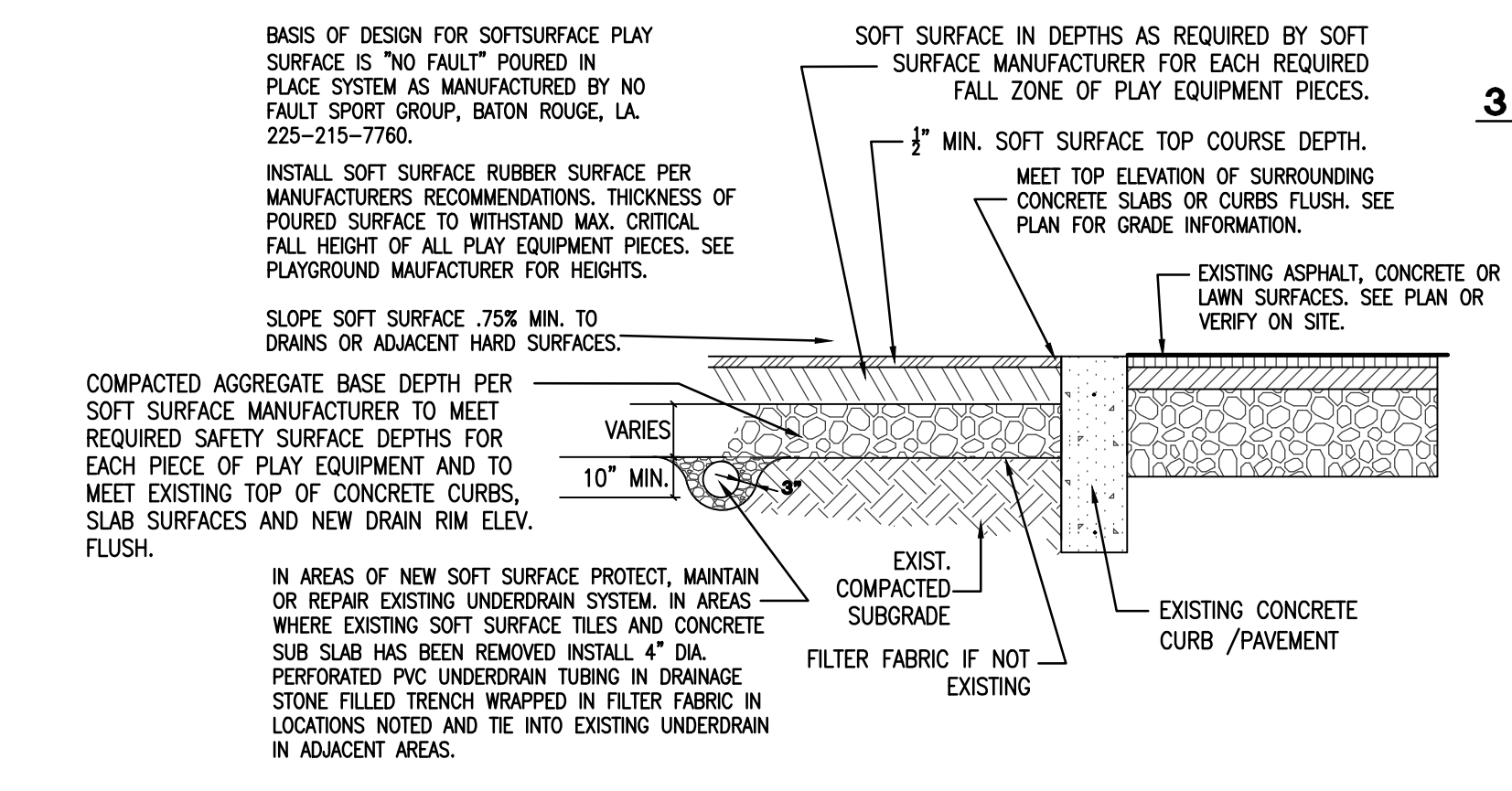


LAYOUT PLAN NOTES

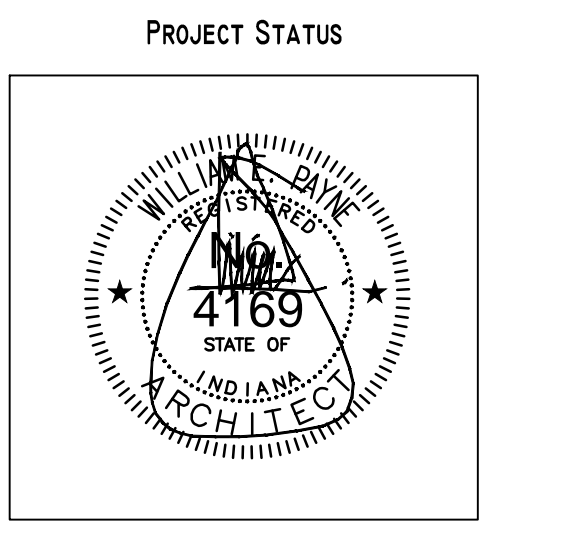
- INSTALL 2 COLOR POURED IN PLACE RUBBER SAFETY SURFACING IN DEPTHS AS REQUIRED FOR EACH PIECE OF PLAY EQUIPMENT OVER COMPACTED LIMESTONE AGGREGATE BASE AS REQUIRED BY SAFETY SURFACE MANUFACTURER. PROVIDE POSITIVELY DRAINING FINISH SURFACES OF SAFETY SURFACE MATERIAL. SEE PLAN FOR AREA COLORS. EACH COLOR SHALL BE A 2 WAY BLEND AS NOTED ON THE PLAN AND AS SELECTED BY THE ARCHITECT AND OWNER. POURED IN PLACE SURFACE SHALL BE "NO FAULT" SURFACING AS MANUFACTURED BY SPORT GROUP, BATON ROUGE, LA OR APPROVED EQUAL. CONTRACTOR SHALL GRADE SUBGRADE AND SUPPLY COMPACTED AGGREGATE AS REQUIRED TO PROVIDE POSITIVE FINAL SURFACE DRAINAGE FLOW OF APPROX. MIN. .75% CROSS SLOPE TO AREA DRAIN. IN PLAY AREAS SLOPE POURED IN PLACE SURFACE TO DRAIN AND MAINTAIN REQUIRED HEIGHTS TO PLAY EQUIPMENT. SEE DETAILS FOR MORE INFORMATION.
- EXTEND SUBDRAIN LINES IN AREAS WHERE EXISTING RUBBER TILES AND CONCRETE BASE HAVE BEEN REMOVED. TIE INTO EXISTING SUBDRAIN SYSTEM. SEE DETAILS FOR ADDITIONAL INFORMATION.
- AS AN ALTERNATE INSTALL PLAYGROUND HARD SURFACE LINE MARKINGS AND BACKGROUND COLORS (SEE DETAILS) FOR GAMES AND MARKINGS ONLY (NO OVERALL BACKGROUND COLOR FOR ENTIRE ASPHALT PLAY SURFACE). SYSTEM SHALL INCLUDE 2 COATS OF FORTIFIED PLEXIPAVE, 1 COAT OF FINISH COAT AND 2 COATS OF LINE AND GAME PAINT. INCLUDE MATERIAL AS RECOMMENDED BY MANUFACTURER IN SURFACE FOR SLIP RESISTANCE.
- PROTECT OR RESSOD AREAS DISTURBED DURING CONSTRUCTION.
- EXTEND SUBDRAIN IN LOCATIONS AS NOTED AND INSTALL SMALL AREA DRAINS TO REMOVE SURFACE WATER. DRAINS SHALL BE 6" DIA. #1610 AREA DRAIN AS MANUFACTURED BY SMITH WITH POLISHED NICKLE BRONZE TOP OR 7" DIA. #2507 AREA DRAIN WITH POLISHED NICKLE BRONZE TOP AS MANUFACTURED BY ZURN OR APPROVED EQUAL.
- INSTALL SMALL AREA DRAIN IN LOCATION NOTED AND TIE INTO EXISTING SUBDRAIN LINE. DRAINS SHALL BE 6" DIA. #1610 AREA DRAIN AS MANUFACTURED BY SMITH WITH POLISHED NICKLE BRONZE TOP OR 7" DIA. #2507 AREA DRAIN WITH POLISHED NICKLE BRONZE TOP AS MANUFACTURED BY ZURN OR APPROVED EQUAL.
- LOCATION OF TEST HOLE DUG THROUGH BARK SOFT SURFACE TO PLAYGROUND SUBGRADE. SEE PLAN FOR SPECIFIC MATERIAL AND DEPTHS ENCOUNTERED.

PAINTED PLAYGROUND NOTES

- FUNNEL/DROPSHOT, TETHERBALL AND FOUR SQUARE COLORS TO BE AS NOTED ON THE PLAN. THE LINES ARE TO BE 2" WIDE, PAINTED WHITE.
- HOPSCOTCH LINES ARE TO BE 2" WIDE, PAINTED WHITE. HOPSCOTCH AREAS COLORS ARE AS FOLLOWS: AREAS 1, 4, & 10 ARE TO BE BLUE. AREAS 2, 5, 7 & 10 ARE RED. AREAS 3, 6, & 8 ARE YELLOW. THE NUMBERS ARE TO BE WHITE WITH 7" WIDE LINES.
- COMPASS: LINES OUTLING ARROWS ARE TO BE 2" WIDE, PAINTED WHITE; CENTER OF ARROWS ARE TO BE PAINTED SOLID RED. LETTERS (N,S,E,W) ARE TO BE WHITE. 21" HIGH WITH 3" WIDE LINES.
- CLOCK: LARGE CIRCLE TO BE PAINTED SOLID RED. SMALL CENTER CIRCLE AND NUMBERS TO BE PAINTED SOLID WHITE. NUMBERS ARE TO BE 15" HIGH AND WITH 3" WIDE LINES.
- TOT TRACK: ALL THE SMALL CIRCLES, SQUARES, TRIANGLES & DIAMONDS ARE TO BE 1"-6" DIAMETER OR ALONG EDGES. THEY ARE TO BE PAINTED COLORS AS NOTED ON PLAN. THE SYMBOLS ARE TO BE 1"-6" HIGH. PAINTED LINES IN THE KINDERGARTEN PLAY AREA ARE TO BE 2" WIDE, PAINTED WHITE.
- SEE SPEC SECT. 02745 FOR TYPE OF PAINTING SYSTEM TO BE USED.



KEY PLAN



PROJECT STATUS

PROJECT MANAGER: AM
 DRAWN BY: JB
 PROJECT NUMBER: 218555-00
 PROJECT ISSUE DATE: 12/7/2018

REV. NO.	DESCRIPTION	DATE

PLAYGROUND LAYOUT PLAN

G1.5