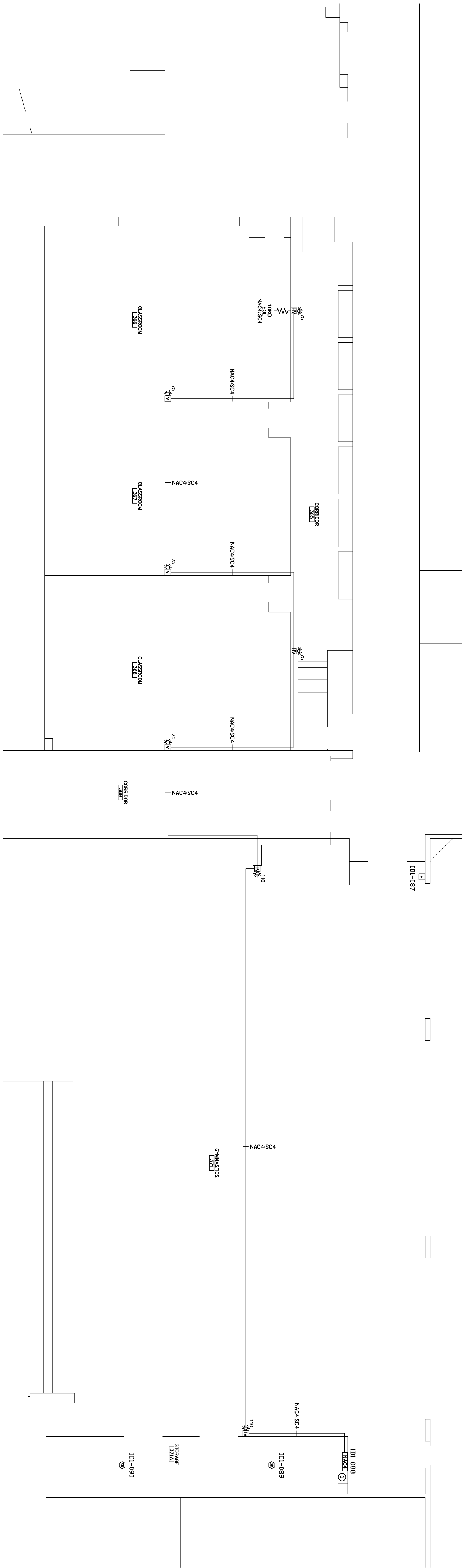
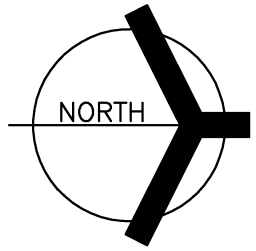
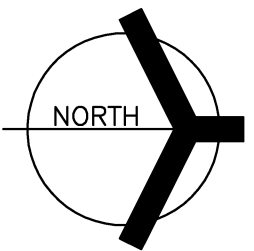


FIRE ALARM SYSTEM PLAN  
UNIT "D" SECOND FLOOR



FIRE ALARM SYSTEM PLAN  
UNIT "D" FIRST FLOOR



| FIRE ALARM SYMBOL LEGEND    |   |
|-----------------------------|---|
| MANUAL PULL STATION         | 1 |
| SMOKE DETECTOR              | 2 |
| DUCT MOUNTED SMOKE DETECTOR | 2 |
| REMOTE TEST/INDICATOR LED   | 2 |
| REMOTE RELAY                | 2 |
| MULTI-CANDELA HORN VISUAL   | 4 |
| MULTI-CANDELA VISUAL ONLY   | 3 |
| 4009 FIRE ALARM NAC PANEL   | 1 |
| END-OF-LINE RESISTOR        | 1 |

GENERAL FIRE ALARM NOTES

- 1) VERIFY EXACT LOCATION OF ALL EQUIPMENT BEFORE INSTALLATION.
- 2) ALL FIRE ALARM EQUIPMENT TO BE INSTALLED PER NFPA 72 AND NATIONAL ELECTRIC CODE STANDARDS.
- 3) NATIONAL ELECTRIC CODE STANDARDS REQUIRE A MINIMUM OF 3" FROM ANY AIR DISCHARGER, DUCT DETECTORS TO BE MOUNTED A MINIMUM OF SIX DUCT MOTHS FROM BENDS OR INLETS TO AVOID AIR TURBULENCE, AND NOT TO BE MOUNTED OUTSIDE OF BUILDING.
- 4) SIGNAL, ZONE, AND SPEAKER CIRCUITS ARE NOT TO BE "T-TAPPED".

FIRE ALARM PLAN NOTES

- 1) DEVICE REQUIRES DEDICATED 120VAC POWER CIRCUIT WITH GROUND. 120VAC CABLE TO BE RUN IN SEPARATE CONDUIT THAN THAT OF 24VDC FIRE ALARM CABLES. SEE GROUNDING DETAIL ON DETAIL SHEET FOR GROUNDING REQUIREMENTS.
- 2) EXTERNAL SUPERVISED RELAY PROVIDED FOR AHU CONTROL.
- 3) HOME RUN TO 4009 FIRE ALARM NAC PANEL #4.

| REVISION DESCRIPTION | DATE | NO. | CAD | ENG |
|----------------------|------|-----|-----|-----|
|                      |      |     |     |     |
|                      |      |     |     |     |
|                      |      |     |     |     |
|                      |      |     |     |     |

**tyco** *Fire & Security* **SimplexGrinnell**

11820 PENDLETON PIKE  
INDIANAPOLIS, INDIANA 46236

SALES: 317-826-2130  
SERVICE: 317-826-2130  
FAX: 317-826-2140

©2006 SIMPLEXGRINNELL LP  
ALL RIGHTS RESERVED

|   |              |
|---|--------------|
| FIRE ALARM SYSTEM PLAN<br>UNIT "D" FIRST & SECOND FLOOR<br>LAWRENCE CENTRAL HIGH SCHOOL |              |
| 7300 EAST 56TH STREET<br>INDIANAPOLIS, IN   |              |
| DESIGNED BY:  | DATE: 2/1/08 |
| APPROVED BY:  | DATE: 5/5/08 |
| PROJECT NUMBER: 928697603   |              |
| SHEET TITLE: LAWRENCE CENTRAL HS--6   |              |
| SHEET NUMBER: 6   |              |